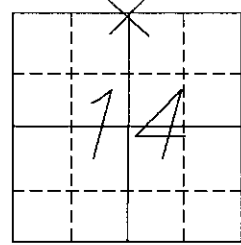


U.S. PUBLIC LAND SURVEY MONUMENT RECORD

NOTE: This form is intended and designed to fulfill all requirements of Wisconsin Administrative Code, Chapter A-E 7.08 U.S. Public Land Survey Monument Record (3) (a-i). An additional sheet may be added if necessary to conform with said requirements.

(a) Corner location: Township 36 North
 Range 7 East/West
 Town/City/Village WOODBORO
 County ONEIDA

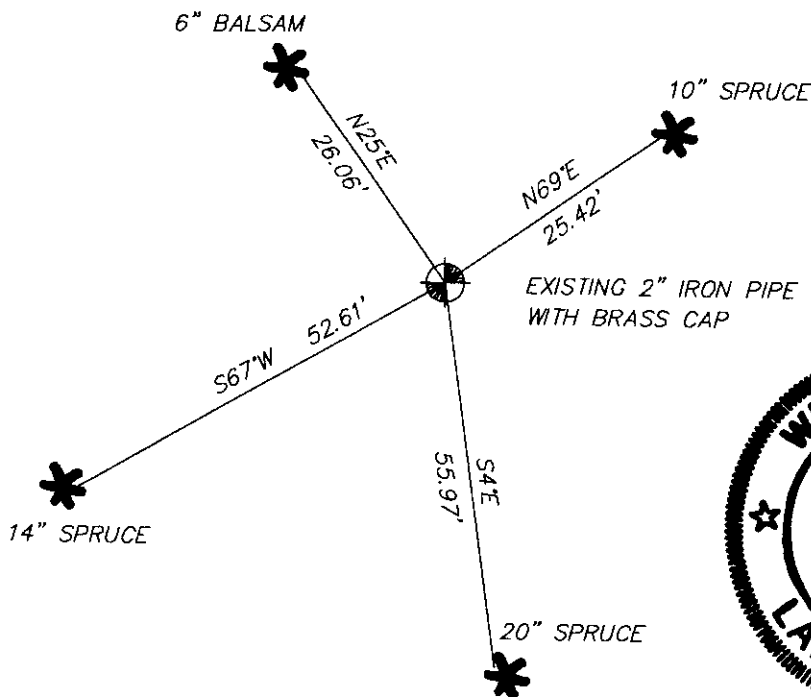


(b)(f)(g)(h) Description of monument found at this corner and if it was accepted, state all evidence (material, testimonial, occupational, plats, records, other monuments) used as a basis for accepting. If not accepted or if nothing was found, state evidence used as basis for establishing location. If reestablished through lost corner proportionate methods, indicate all monuments, distances and directions used to establish. Indicate type of monument found or set and sign post.

THIS CORNER WAS ORIGINALLY ESTABLISHED IN JULY OF 1910 BY VAUGHN, AT WHICH TIME HE SET A WOOD STAKE AND MADE A WITNESS TO A 7" TAMARACK-N59°W-25 LINKS, AND A 10" TAMARACK S20°W 10 LINKS. IN AUGUST OF 1937 MAINE FOUND A WOOD STAKE AT THE LOCATION AND THE TAMARACK STUMP. MAINE SET 2" CAPPED IRON PIPE. NO BT'S WERE AVAILABLE.

I FOUND AN MAINES ONIEDA COUNTY MONUMENT AT THIS CORNER LOCATION. I ACCEPTED THE CORNER AS MONUMENTED AND MADE NEW WITNESSES TO THE MONUMENT.

(c)(d)(e) Plan view of corner with ties to at least 4 witness monuments. If in disagreement with previously established corner, show the distances between the two corners and also indicate the ties to the disputed corner.



REGISTER OF DEEDS OFFICE
 ONEIDA COUNTY, WIS.
FILED
 FEB 8 1996
 At 0 O'Clock M
 THOMAS H. LEIGHTON
 REGISTER OF DEEDS



(1) DEVON WANDEN HEUVEL
 (type or print name) certify that the corner location of this record was determined by me or under my direction and control and that this U.S. Public Land Survey Monument Record is correct and complete to the best of my knowledge and belief.

Devon Wanden Heuvel 2-7-96
 Signature Date

Index No. 5-19

3607110020