

Stock No. 26273

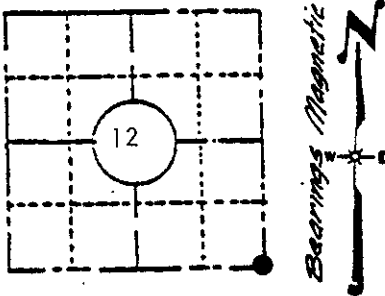
# U. S. PUBLIC LAND SURVEY MONUMENT RECORD

**INSTRUCTIONS:**

This record shall show the location of the corner and shall include all of the following nine elements (a through i).

- (a) Identify the corner by reference to the U.S. public land survey system.

SOUTHEAST CORNER  
Section 12  
T36N, R7E



LOCATION SKETCH  
(Location of landmark indicated by "●")

Sept. 2, 1860- Alfred Millard, Deputy Surveyor.  
Set post at corner to Sections 12, 13, 7 and 18.  
Original bearing trees:

- Tamarack 10" S42-1/2°E, 144 links (95.04 feet)
- Tamarack 10" N84°E, 165 links (108.9 feet)
- Spruce 6" S76°W, 103 links (67.98 feet)

Nov. 29th, 1892- B. F. Dorr, Oneida County Surveyor  
Record of partial section subdivision refers to corner with no monument description.

July 13th & 15th, 1937- V. M. Maine, Oneida County Surveyor  
Identified by old scribed stake and stubs of original bearing trees V12; Tamarack 10" S42-1/2°E, 1.44 chains  
Tamarack 10" N84°E, 1.65 chains. Set official corner.  
No bearing trees near.  
Old fence line North.

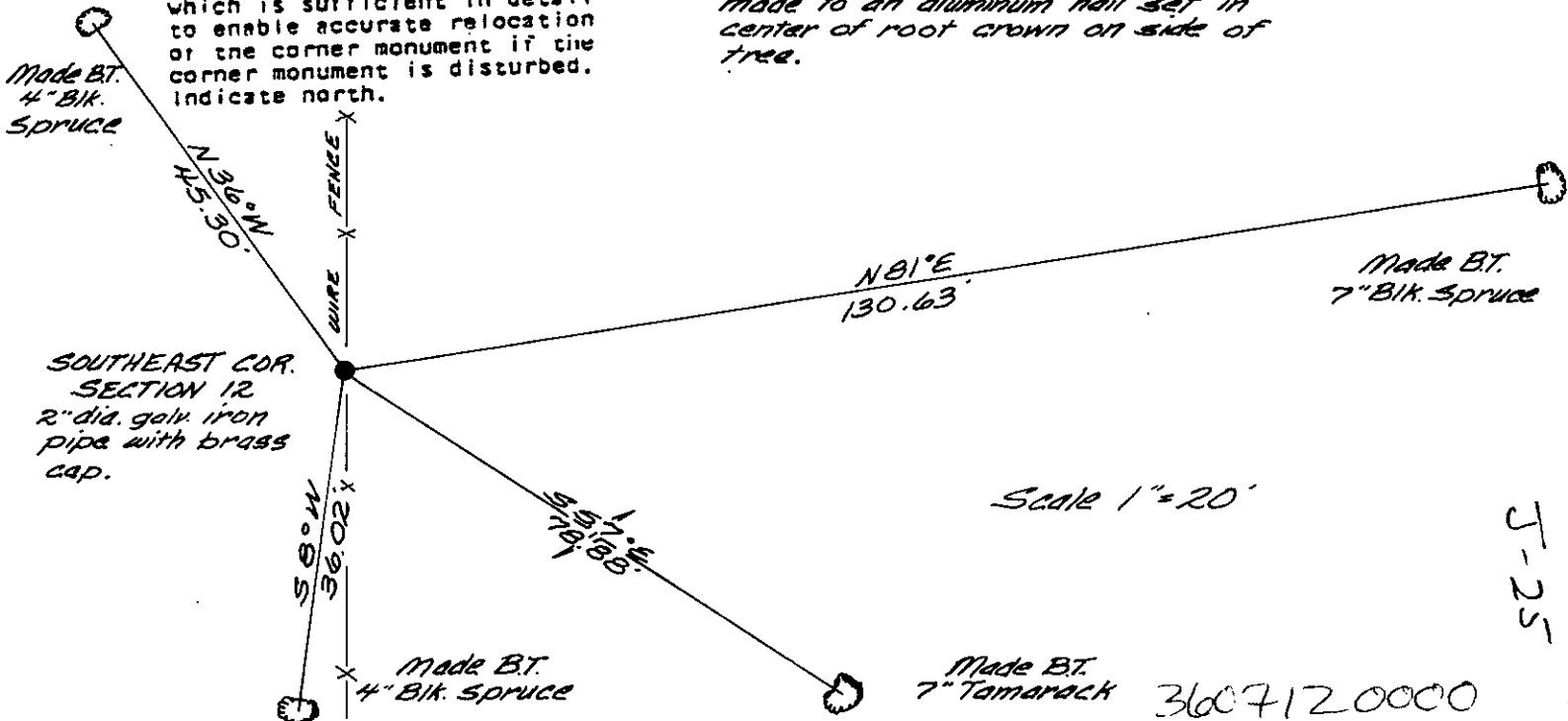
- (b) Describe any record evidence, monument evidence, occupational evidence, testimonial evidence or any other material evidence you considered, and whether the monument was found or placed.

Found 2 inch diameter galvanized iron pipe, up 20 inches with brass cap marked to identify corner.  
Remains of large Tamarack stump, N82°E, 109 feet  
12" Tamarack stump, S44°E, 95.2 feet (part of boxing evident)  
The corner is located in Black Spruce swamp on an old North-South wire fence line.

- (c) In the plan view drawing below, provide reference ties to at least 4 witness monuments, or, if the location is within a municipality, to at least 2 witness monuments. (Witness monuments shall be made of concrete, natural stone, iron or other equally durable material, except <sup>BTS-OK</sup> wood.) Describe witness monuments.

- (d) Show a plan view drawing depicting the relevant monuments and reference ties which is sufficient in detail to enable accurate relocation of the corner monument if the corner monument is disturbed. Indicate north.

NOTE: Bearing tree distance meas. made to an aluminum nail set in center of root crown on side of tree.



Scale 1" = 20'

3607120000

J-25

(c) Describe any material discrepancy between the location of the corner as restored or reestablished and the location of that corner as previously restored or reestablished by distance and direction. Show the discrepancy on the plan view drawing under (d), above. Show the distances between the corner as previously restored or reestablished and (1) the corner as restored or reestablished, and (2) to at least 2 of the witness monuments shown on the drawing in (d), above.

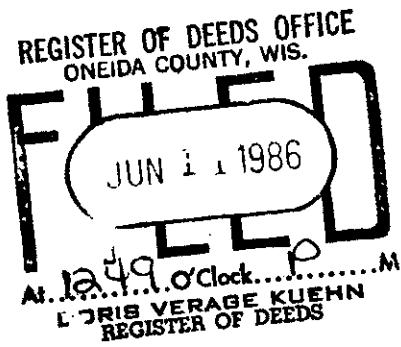
None

(f) Was the corner restored through acceptance of (1) an obliterated evidence location, or, (2) a found perpetuated location?

This corner was restored through acceptance of a found perpetuated location.

(g&h) Was the corner reestablished through lost corner proportionate methods? If so, show the method, including the directions and distances to other public land survey corners used as evidence or used for proportioning in determining the corner location?

No.



(i) I, JAMES D. REIN, Reg. Land Surveyor No. S-1234  
(type or print name) certify that the corner location shown on this record was determined by me or under my direction and control and that this U.S. Public Land Survey Monument Record is correct and complete to the best of my knowledge and belief.

James D Rein  
Signature

August 31st, 1983  
Date

