

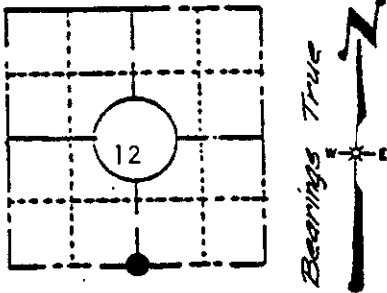
Stock No. 26273

U. S. PUBLIC LAND SURVEY MONUMENT RECORD

INSTRUCTIONS:

- (a) Identify the corner by reference to the U.S. public land survey system.

SOUTH QUARTER CORNER
SECTION 12
T36N - R7E



LOCATION SKETCH
(Location of landmark indicated by "●")

This record shall show the location of the corner and shall include all of the following nine elements (a through i).

- Nov. 19th, 1862- Joseph H. Jenkins, Deputy Surveyor
"Set 1/4 Section post." Original bearing trees:
White Pine 10" N37°E, 12 links (7.92 feet)
White Pine 7" S17°W, 10 links (6.60 feet)
- Nov. 29th, 1892- B. F. Dorr, Oneida County Surveyor
Record of partial section subdivision refers to corner with no monument description
- July 12th, 1937- V. M. Maine, Oneida County Surveyor
Found original Government corner. Identified by 2 inch iron rod for post and stps. of original bearing trees (plain)
White Pine 10" N37°E, .20 chains (13.20 feet)
White Pine stump S17°W, .10 chains (6.60 feet)
- Set official corner, No bearing trees near.

- (b) Describe any record evidence, monument evidence, occupational evidence, testimonial evidence or any other material evidence you considered, and whether the monument was found or placed.

Found a 2 inch galvanized iron pipe up 38 inches with a brass cap marked to identify corner.

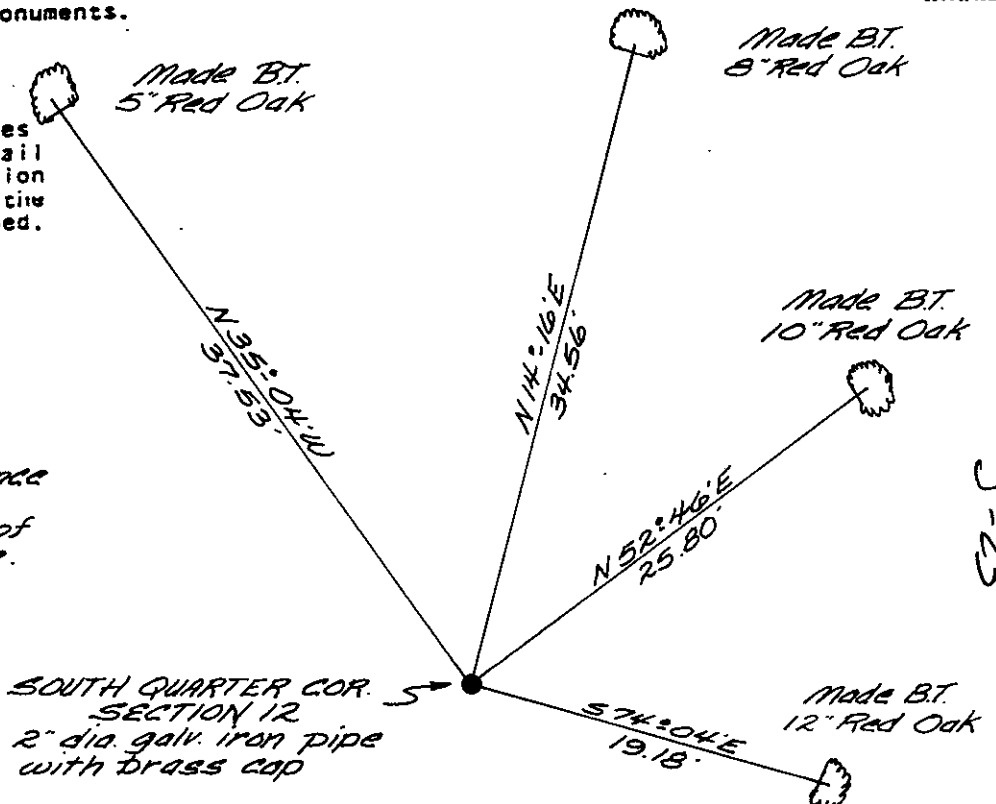
Pine Stump, N37°E, 13-1/2 feet
Pine Stump, S17°W, 6.6 feet (stump is mostly down, however scribe marks are visible on part of blazed face. Corner is located in the northeast corner of a depression.

- (c) In the plan view drawing below, provide reference ties to at least 4 witness monuments, or, if the location is within a municipality, to at least 2 witness monuments. (Witness monuments shall be made of concrete, natural stone, iron or other equally durable material, except BTs-OK wood.) Describe witness monuments.

- (d) Show a plan view drawing depicting the relevant monuments and reference ties which is sufficient in detail to enable accurate relocation of the corner monument if the corner monument is disturbed. Indicate north.

Scale 1" = 10'

NOTE: Bearing tree distance measurements made to an aluminum nail set in center of root crown on side of tree.



5-23

3607120020

(e) Describe any material discrepancy between the location of the corner as restored or reestablished and the location of that corner as previously restored or reestablished by distance and direction. Show the discrepancy on the plan view drawing under (d), above. Show the distances between the corner as previously restored or reestablished and (1) the corner as restored or reestablished, and (2) to at least 2 of the witness monuments shown on the drawing in (d), above.

NONE

(f) Was the corner restored through acceptance of (1) an obliterated evidence location, or, (2) a found perpetuated location?

The corner was restored through acceptance of a found perpetuated location.

(g&h) Was the corner reestablished through lost corner proportionate methods? If so, show the method, including the directions and distances to other public land survey corners used as evidence or used for proportioning in determining the corner location?

NO.

REGISTER OF DEEDS OFFICE
ONEIDA COUNTY, WIS.
FILED
JUN 11 1986
At 12:47 P.M.
LORIS VERAGE KUEHN
REGISTER OF DEEDS

(i) I, JAMES D. REIN, Reg. Land Surveyor No. S-1234
(type or print name) certify that the corner location shown on this record was determined by me or under my direction and control and that this U.S. Public Land Survey Monument Record is correct and complete to the best of my knowledge and belief.

James D Rein
Signature

August 31st, 1983
Date

