

Stock No. 26273

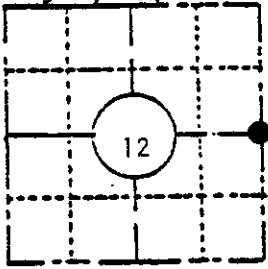
# U. S. PUBLIC LAND SURVEY MONUMENT RECORD

**INSTRUCTIONS :**

This record shall show the location of the corner and shall include all of the following nine elements (a through i).

- (a) Identify the corner by reference to the U.S. public land survey system.

EAST QUARTER CORNER  
SECTION 12  
T36N, R7E



**LOCATION SKETCH**

(Location of landmark indicated by "●")

Sept. 2, 1860- Alfred Millard, Deputy Surveyor,  
Set 1/4 Section post. Original bearing trees:  
Maple 10" S31°W, 38 links (25.08 feet)  
Aspen 12" S74°E, 15 links ( 9.90 feet)

Nov. 29th, 1892- B. F. Dorr, Oneida County Surveyor  
Record of partial section subdivision, refers to corner  
with no monument description.

July 15th, 1937- V. M. Maine, Oneida County Surveyor  
Identified by old stake and stool of original B.T.  
Maple, S31°W, .38 chains.

Found point of B. F. Dorrs stake.

Set official corner. Nothing near for Bearing Trees.  
Survey record intersects a fence bearing East 4.70 chains  
(310.2 feet) south of corner.

- (b) Describe any record evidence, monument evidence, occupational evidence, testimonial evidence or any other material evidence you considered, and whether the monument was found or placed.

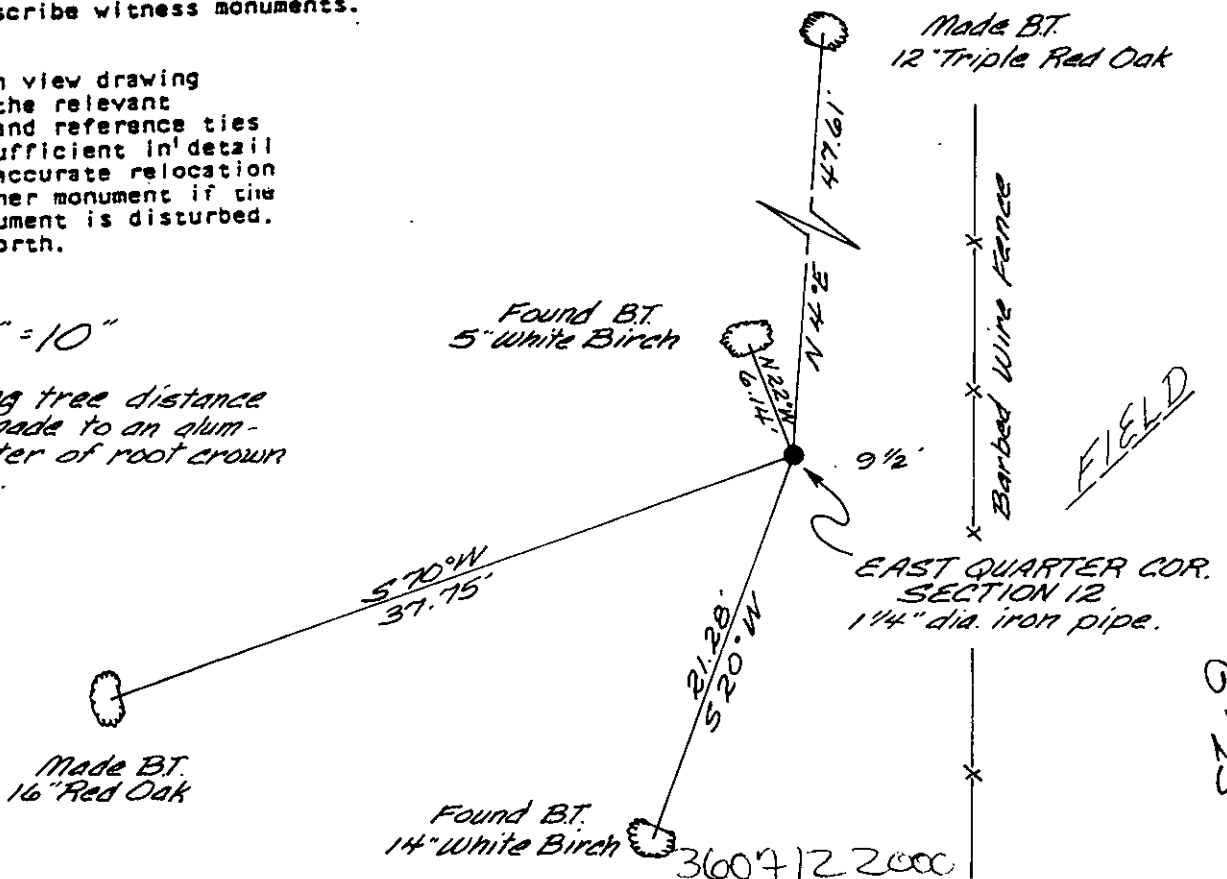
Found a 1-1/2" dia. iron pipe up 10 inches witnessed by unscribed, blazed bearing trees. 14" White Birch, S20°W, 21.28 feet and a 5" White Birch, N22°W, 6.14 feet. Pipe is located on the westerly edge of an old bulldozed or cleared area. A north-south fence is located 9-1/2 feet East of the iron pipe. An old fence running East intersects the North-South fence 313 feet South of the iron pipe. I accept the existing iron pipe as the best available evidence of the original corner location.

- (c) In the plan view drawing below, provide reference ties to at least 4 witness monuments, or, if the location is within a municipality, to at least 2 witness monuments. (Witness monuments shall be made of concrete, natural stone, iron or other equally durable material, except BTS-OK wood.) Describe witness monuments.

- (d) Show a plan view drawing depicting the relevant monuments and reference ties which is sufficient in detail to enable accurate relocation of the corner monument if the corner monument is disturbed. Indicate north.

Scale 1" = 10"

NOTE: Bearing tree distance measurements made to an aluminum nail in center of root crown on side of tree.



6-25

(e) Describe any material discrepancy between the location of the corner as restored or reestablished and the location of that corner as previously restored or reestablished by distance and direction. Show the discrepancy on the plan view drawing under (c), above. Show the distances between the corner as previously restored or reestablished and (1) the corner as restored or reestablished, and (2) to at least 2 of the witness monuments shown on the drawing in (d), above.

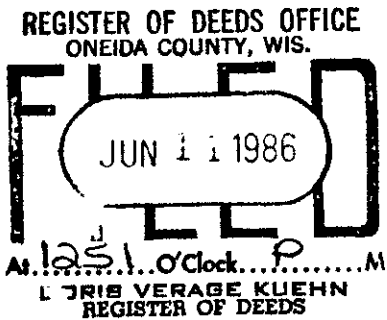
The location of the corner as restored is harmonious with the record.

(f) Was the corner restored through acceptance of (1) an obliterated evidence location, or, (2) a found perpetuated location?

The corner was restored through acceptance of an obliterated evidence location.

(g&h) Was the corner reestablished through lost corner proportionate methods? If so, show the method, including the directions and distances to other public land survey corners used as evidence or used for proportioning in determining the corner location?

No.



(1) I, JAMES D. REIN, Reg. Land Surveyor No. S-1234  
(type or print name) certify that the corner location shown on this record was determined by me or under my direction and control and that this U.S. Public Land Survey Monument Record is correct and complete to the best of my knowledge and belief.

James D Rein August 31st, 1983  
Signature Date

