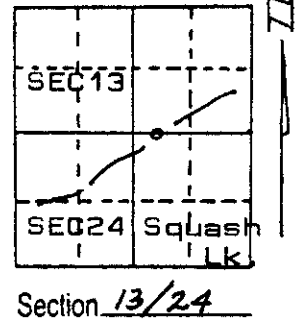


# U.S. PUBLIC LAND SURVEY MONUMENT RECORD

Note: This form is intended and designed to fulfill all requirements of Wisconsin Administrative Code, Chapter A-E ~~7.08~~, U.S. Public Land Survey Monument Record (3) (a) (b) (c) (d) (e) (f) (g) (h) (i). An additional sheet may be added if necessary to conform with said requirements.

(a) Corner location: Township 36 North  
 Range 7 East/~~West~~  
 Town/~~City/Village~~ WOODBORO  
 County ONEIDA



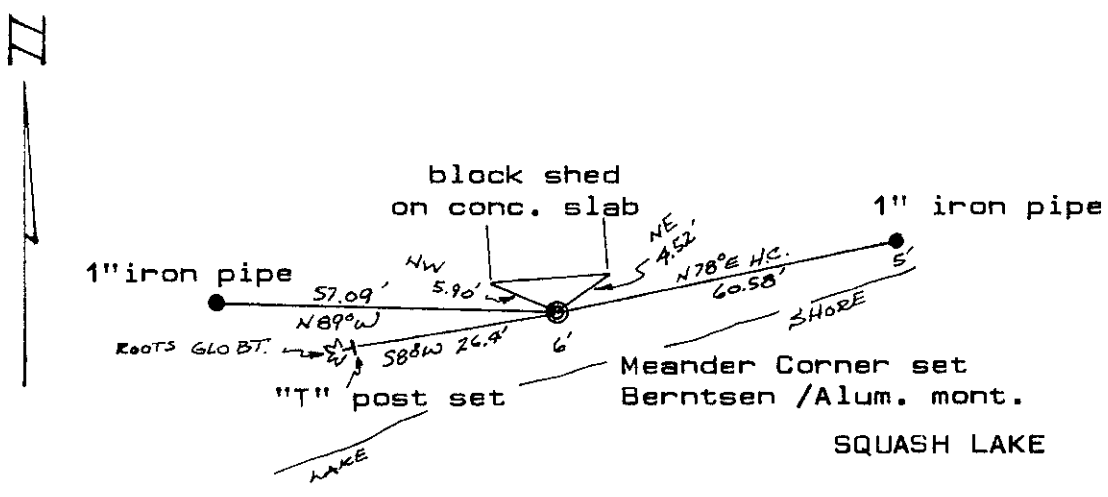
(b) (f) (g) (h) Description of monument found at this corner and if it was accepted, state all evidence (material, testimonial, occupational, plats, records, other monuments) used as a basis for accepting. If not accepted or if nothing was found, state evidence used as basis for establishing location. If reestablished through lost corner proportionate methods, indicate all monuments, distances and directions used to establish.

Original GLO survey by Jos.H. Jenkins, Deputy Surveyor in 1862. Set post for meander corner Y.pine 16" N12°W, 151k. Y.pine 12" S72°W, 401k.

D.H.Vaughan in 1920 retraced this section line, found original evidence.

I found remains of original SW B.T. and reset meander corner on small bench.

(c) (d) (e) Plan view of corner with ties to at least 4 witness monuments. If in disagreement with previously established corner, show the distances between the two corners and also indicate the ties to the disputed corner.



(i) I, ROBERT H. WINAT, LAND SURVEYOR 1040  
 (type or print name) certify that the corner location on this record was determined by me or under my direction and control and that this U.S. Public Land Survey Monument Record is correct and complete to the best of my knowledge and belief.

Signature Robert H. Winat Date 31 DEC '01



3607130017

Index No. N 23-24