

U.S. PUBLIC LAND SURVEY MONUMENT LOCATION RECORD

Recorders Data

USPLS CORNER: NORTH 1/4 SECTION: 24 TOWNSHIP: 36 NORTH RANGE: 7 EAST

NAME OF WATERWAY FOR M.C. CORNER : N/A SECTION LINE: N/A

(CITY)(VILLAGE)(TOWN) OF: WOODBORO COUNTY OF: ONEIDA

Description of monument found or placed and all other evidence used as the basis for monument location; including monuments and related measurements required if the corner location was reestablished by lost corner proportionate methods. Also indicate name of original surveyor, original survey date and the corner monument, bearing trees, witness or other reference monuments established; including measured bearing and distance ties, from available records.

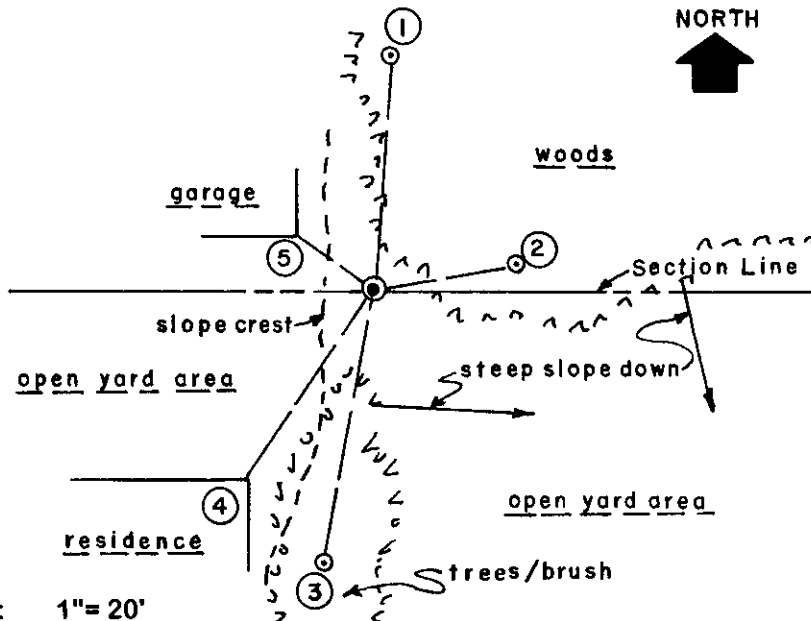
Found and accepted an older standard 2" dia. iron pipe monument with brass cap stamped in 1980 by Robert Winat, RLS 1040, at 16" above existing steep slope grade. The monument was tipped about 4" at the top from center, so I carefully dug down to the base of the monument and replumbed it with tamped backfilling to secure, during which the adjacent East adjoiner owner Gary Hahn advised me that he and Robert Winat had also found the monument tipped about 4" at the top by a previous resurvey of his boundary to the East.

In November 1862, Joseph Jenkins/GLO set a wood post as the original corner and marked OBTs: a 15" Py S49°W 12 links and a 12" Pw N59°W 12 links, all of which are now obliterated.

In August 1978, Jerome Kramer/RLS 1448, noted a 3/4" dia. iron pipe monument found at this corner and an 8" Oak BT N65°W 4.5' per plat of survey filed as C-412 in Oneida County survey records; both now gone. Ony two years later in 1980, Robert Winat/RLS 1040 undoubtedly found the foregoing pipe and BT noted by Kramer and reset the corner with a standard 2" dia. iron pipe monument with stamped brass cap and apparently referenced same as his usual practice to old 60D spikes I found in old BTs noted for new ties below. I also found a standard white poly 'T' marker post 6" West of the corner monument and remains of a previous white poly aerial photo marker panel at grade. In 1992, Todd Loftus/RLS 1593 apparantly found this corner as well per plat of survey B-3641 in Oneida County survey records.

This recovery completed September 30, 1999 and witnessed by the forgoing named Gary Hahn, adjacent owner. The corner is located on the East boundary of the existing land parcel at Fire No. 7435.

Plan view map of monument location with bearing and distance ties to a minimum of four(4) described witness or reference monuments of concrete, natural stone, iron, live bearing trees or equivalent material. If applicable, also show a minimum of two(2) bearing and distance ties to any other monument found and not accepted; including the bearing and distance from the accepted monument.



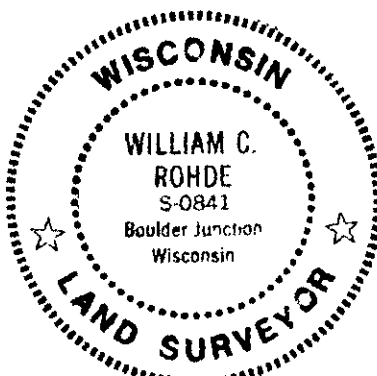
WITNESS MONUMENT TIES:

- ① Old BT 7" Or with upper blaze shut but scar plain N04°E 25.03' to old 60d spike found in lower left face.
- ② Old BT 22" Or with lower blaze shut but plain N79°E 15.25' to old 60d spike found in lower left face.
- ③ New BT 8" Mr S10°W 28.95'.
- ④ NE corner of existing concrete block house foundation S34°W 23.70'.
- ⑤ SE corner of existing concrete garage floor slab at grade N55°W at 9.94'.

SCALE: 1" = 20'

Unless otherwise indicated, all bearing tree ties are to a .25" dia. by 2.5" long PK nail with a 1.25" dia. steel washer driven into unblazed right face and a .25" dia. by 2.5" long PK nail with a 2" dia. steel washer stamped BT is also driven into unblazed face of bearing tree at DBH; the basis for measured bearings is by compass to nearest degree and all tie distances are measured horizontal by steel tape corrected to nearest 1/100th feet at standard temperature of 68° F.

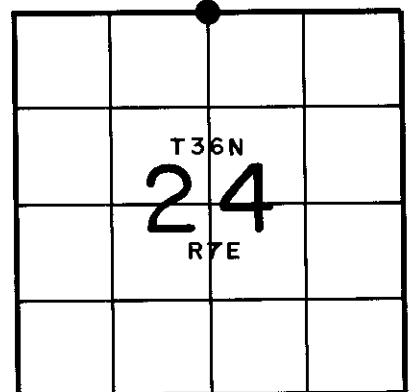
RLS SEAL:



LAND SURVEYOR CERTIFICATE:

I, William C. Rohde, hereby certify that I am duly licensed as a Professional Land Surveyor in the State of Wisconsin; that this USPLS monument location was determined by me and/or under my direct supervision and control; and that this U.S. Public Land Survey Monument Location Record is true and correct to the best of my knowledge and belief.

Signed: *William C. Rohde*
William C. Rohde RLS 841



SECTION LOCATION MAP

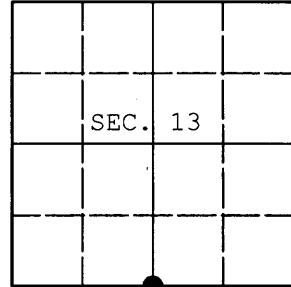
INDEX NO. N 23

3607130020

U.S. PUBLIC LAND SURVEY MONUMENT RECORD

Note: This form is intended and designed to fulfill all requirements of Wisconsin Administrative Code, Chapter A-E 7.08 U.S. Public Land Survey Monument Record (3) (a) (b) (c) (d) (e) (f) (g) (h) (i). An additional sheet may be added if necessary to conform with said requirements.

(a) CORNER LOCATION: WISCRS (Oneida County)
Meander Cor. of Secs. 13 & 24 N: 150,710.166 USft
Township 36 North E: 226,316.864 USft
Range 7 East of the 4th P.M. Datum: NAD 1983(2011)
Town of Woodboro County of Oneida



(b) HISTORY OF ORIGINAL CORNER ESTABLISHMENT

Original Surveyor: Original Accessories:
Date of Survey:

(b)(f)(g)(h) Description of monument found at this corner and if it was accepted, state all evidence (material, testimonial, occupational, plats, records, other monuments) used as a basis for accepting. If not accepted or if nothing was found, state evidence used as basis for establishing location. If re-established through lost corner proportionate methods, indicate all monuments, distances and directions used to establish. Indicate type of monument and sign post found or set.

NOTE: This is a perpetuation of a previous USPLS Monument Record by William C. Rohde, RLS dated March 22, 2000 and filed in the office of the Oneida County Register of Deeds. A complete history of the corner can be found on the previous monument record. I accept the previous location as a true and faithful perpetuation or reestablishment of the original corner location and further perpetuate it as follows.

October 24, 2013: I found and accepted Rohde's monument, a 2-1/2" diam. iron pipe with 2-1/2" diam. brass cap projecting 10" above the ground surface. Rohde's accessories were found in substantial agreement with his previous record and were not remeasured as the sole purpose of this work is to report the coordinates of the corner point.

The coordinates shown were derived from offset RTN GPS observations referenced to the WISCORS network.

(c)(d)(e) Plan view of corner with ties to at least 4 witness monuments. If in disagreement with previously established corner, show the distances between the two corners and also indicate the ties to the disputed.

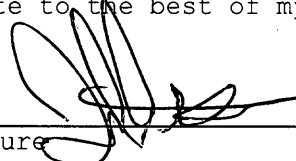
REGISTER OF DEEDS OFFICE
ONEIDA COUNTY
FILED

DEC 23 2013

AT _____ O'CLOCK _____ M
KYLE J. FRANSON
REGISTER OF DEEDS

(i) I, Jeffrey W. Austin, Registered Land Surveyor No. S-1885, hereby certify that the corner location on this record was determined by me or under my direction and control and that this U.S. Public Land Survey Monument Record is correct and complete to the best of my knowledge and belief.



Signature 

DEC 9, 2013
Date