

U.S. PUBLIC LAND SURVEY MONUMENT RECORD

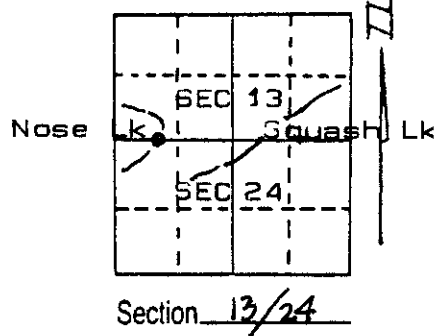
Note: This form is intended and designed to fulfill all requirements of Wisconsin Administrative Code, Chapter A-E 7.08, U.S. Public Land Survey Monument Record (3) (a) (b) (c) (d) (e) (f) (g) (h) (i). An additional sheet may be added if necessary to conform with said requirements.

(a) Corner location: Township 36 North

Range 7 East/West

Town/City/Village WOODBORO

County ONEIDA



(b) (f) (g) (h) Description of monument found at this corner and if it was accepted, state all evidence (material, testimonial, occupational, plats, records, other monuments) used as a basis for accepting. If not accepted or if nothing was found, state evidence used as basis for establishing location. If reestablished through lost corner proportionate methods, indicate all monuments, distances and directions used to establish.

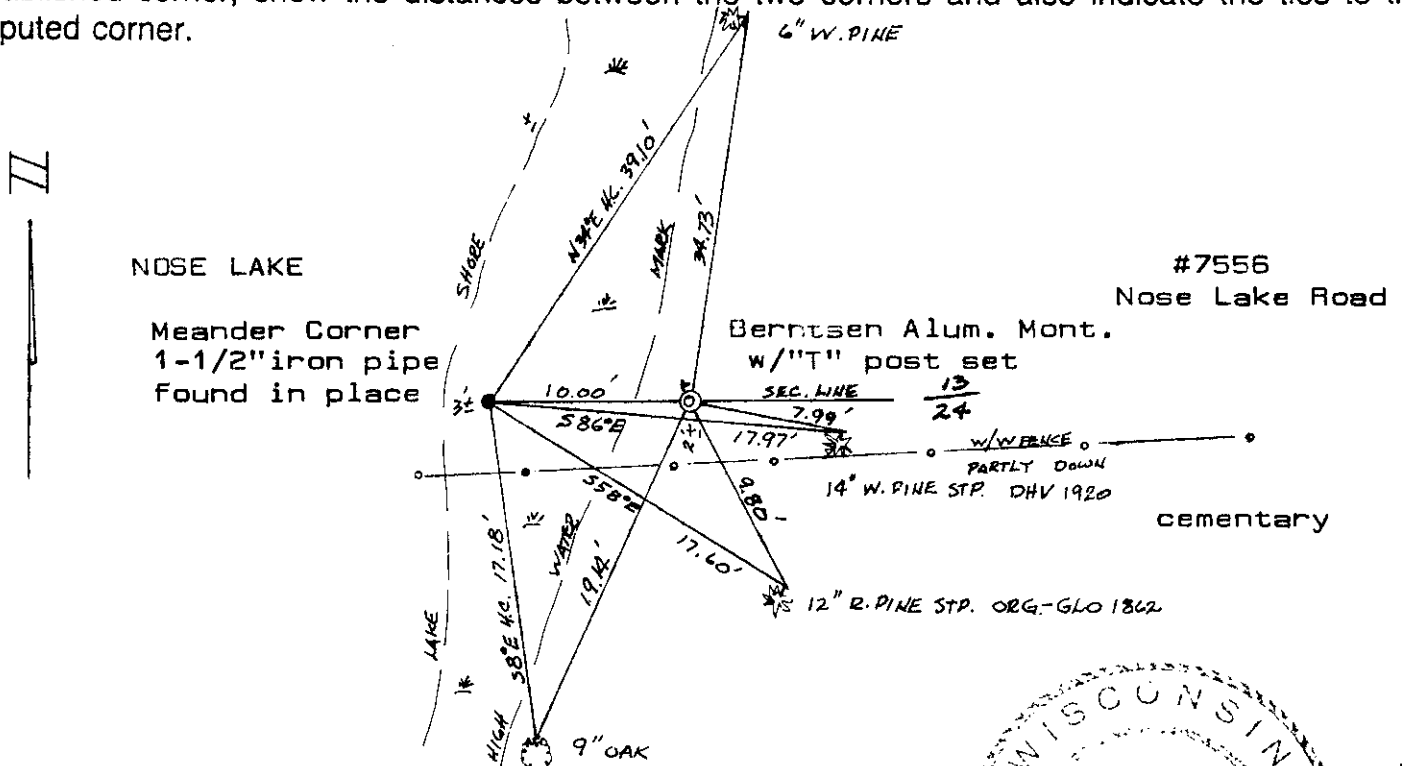
Original GLO survey by Jos.H.Jenkins, Deputy Surveyor in 1862. Set post for meander corner. Y.pine 12" S66°E, 271k. W.pine 10" N87°E, 28 lk.

D. H. Vaughan in 1920 retraced this section line, found originals & made a new B.T.stp.

F.R.Wincentzen in 1949 retraced this line & set iron pipe? at the meander corner.

I found an iron pipe at the shore with the orig.red pine B.T. and DHV's white pine stp. B.T. Set Witness Corner along the section line 10.00' east of the iron pipe with "T" plastic post adjacent and made ties: 6" white pine, N34°E, 39.10'; 9" oak S8°E, 17.18'; 12" red [Yellow] pine stp. S58°E, 17.60' [S66°E, 271ks 17.82']; 14" White pine stp. S86°E, 17.97' [DHV 1920]. Set 60d nails in all bearing trees & stumps.

(c) (d) (e) Plan view of corner with ties to at least 4 witness monuments. If in disagreement with previously established corner, show the distances between the two corners and also indicate the ties to the disputed corner.



(i) I, ROBERT H. WINAT, LAND SURVEYOR 1040
 (type or print name) certify that the corner location on this record was determined by me or under my direction and control and that this U.S. Public Land Survey Monument Record is correct and complete to the best of my knowledge and belief.

Signature Robert H. Winat

Date 29 dec '01



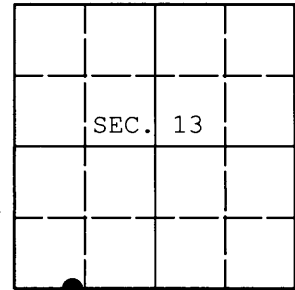
360713 0032

Index No. N21-22

U.S. PUBLIC LAND SURVEY MONUMENT RECORD

Note: This form is intended and designed to fulfill all requirements of Wisconsin Administrative Code, Chapter A-E 7.08 U.S. Public Land Survey Monument Record (3) (a) (b) (c) (d) (e) (f) (g) (h) (i). An additional sheet may be added if necessary to conform with said requirements.

(a) CORNER LOCATION: WISCORS (Oneida County)
Meander Cor. of Secs. 13 & 24 N: 150,710.211 USft
Township 36 North E: 224,482.077 USft
Range 7 East of the 4th P.M. Datum: NAD 1983(2011)
Town of Woodboro County of Oneida



(b) HISTORY OF ORIGINAL CORNER ESTABLISHMENT

Original Surveyor: Original Accessories:
Date of Survey:

(b) (f) (g) (h) Description of monument found at this corner and if it was accepted, state all evidence (material, testimonial, occupational, plats, records, other monuments) used as a basis for accepting. If not accepted or if nothing was found, state evidence used as basis for establishing location. If re-established through lost corner proportionate methods, indicate all monuments, distances and directions used to establish. Indicate type of monument and sign post found or set.

NOTE: This is a perpetuation of a previous USPLS Monument Record by Robert H. Winat, RLS dated December 29, 2001 and filed in the office of the Oneida County Register of Deeds. A complete history of the corner can be found on the previous monument record. I accept the previous location as a true and faithful perpetuation or reestablishment of the original corner location and further perpetuate it as follows.

October 31, 2013: I found and accepted Winat's monument, a 2-1/2" diam. aluminum pipe with 3-1/4" diam. Oneida Co. aluminum cap. Winat's accessories were found in substantial agreement with his previous record and were not remeasured as the sole purpose of this work is to report the coordinates of the corner point.

The coordinates shown were derived from offset RTN GPS observations referenced to the WISCORS network.

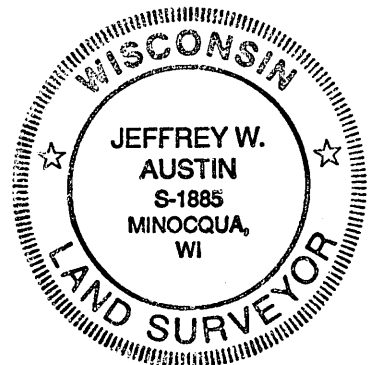
(c) (d) (e) Plan view of corner with ties to at least 4 witness monuments. If in disagreement with previously established corner, show the distances between the two corners and also indicate the ties to the disputed.

REGISTER OF DEEDS OFFICE
ONEIDA COUNTY
FILED

DEC 23 2013

AT _____ O'CLOCK _____ M
KYLE J. FRANSON
REGISTER OF DEEDS

(i) I, Jeffrey W. Austin, Registered Land Surveyor No. S-1885, hereby certify that the corner location on this record was determined by me or under my direction and control and that this U.S. Public Land Survey Monument Record is correct and complete to the best of my knowledge and belief.



Signature

Date

DEC 9, 2013

3607130032 (INDEX NO. N-21,22)