

US PUBLIC LAND SURVEY MONUMENT RECORD

Per Wis. Admin. Code § A-E 7.08, a U.S. public land survey monument record shall be prepared and filed with the county survey records as part of any land survey within 60 days of setting or accepting the corner, which includes or requires the perpetuation, restoration, or use of a U.S. public land survey corner and when any of the situations in Wis. Admin. Code § A-E 7.08(1)(a), (b) or (c) arise.

3(a) Corner Identification:

Set 2 1/2" x 30  
aluminum monument  
Meander Corner  
Section 13  
Township 36 North  
Range 7 East  
4th Principal Meridian  
Town of Woodboro  
Oneida Co., WI

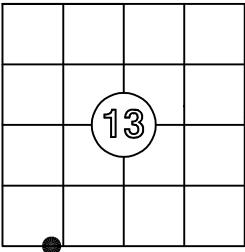
Observed Coordinates:

Set aluminum monument  
N: 150710.38  
E: 224472.02  
Datum: NAD83(2011)  
GNSS Control: WISCRS  
NETWORK  
GNSS Method: RTK-Direct  
Verification Method: 1, 2

Observed Coordinates:

Found aluminum  
monument - WCMC  
N: 150710.35 (Δ 0.149')  
E: 224482.01 (Δ 0.067')  
Published Coordinates:  
N: 150710.211  
E: 224482.077

CORNER ID:  
3607130033



Establishment of Original Corner

Corner Set: Wood Post  
Original Surveyor: Jos. H. Jenkins  
Date of Survey: September, 1862  
Yellow pine 12", S 66° E, 27 lks  
White pine 10", N 87° E, 28 lks

The coordinate value has been verified by at least one of the following methods:

- Comparison to a previously determined GNSS determined published value;
- The value is the average of two or more GNSS observations at markedly different times;
- One or more distances were measured to the corner from offset GNSS observed locations, set and observed per No. 2 methods.

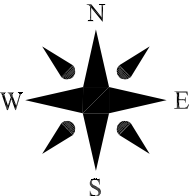
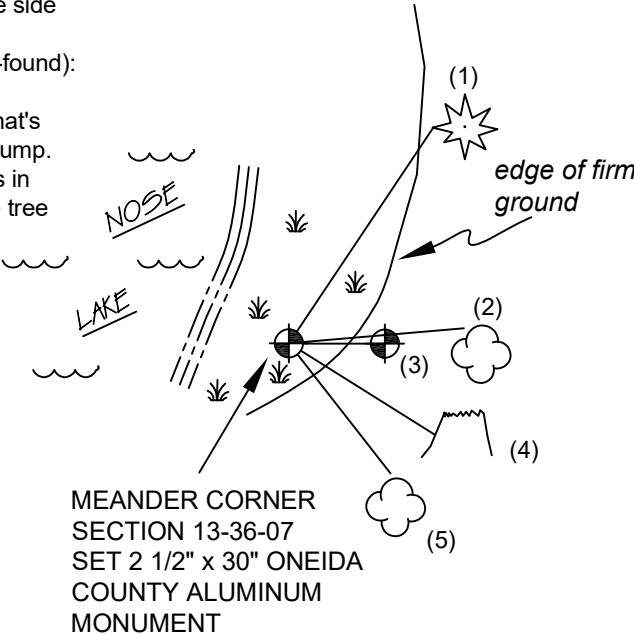
3(b)/(c)(d)(f)(g)(h)

This is a continuation of a previous USPLSS Monument Record by Surveyor Robert Winat, S-1040 (2001) and addendum record by Jeff Austin, S-1885. SeeWinat's record for additional history on this corner.

- 5/15/1972 - Gerald Inman, S-891, finds a 2" iron pipe.
- 7/20/1993 - Todd Loftus, S-1523, finds a "subdivision mon found"
- 12/29/2001 - Robert Winat's monument record states he found a 1 1/2" iron pipe, in place and accepted it as the meander corner. He set an aluminum monument 10.00' east, on the section line, as a WCMC.
- 12/9/2013 - Jeff Austin, S-1885, establishes Oneida County coordinates on the WCMC
- 6/29/2025 - I, Anthony Jones, S-2508, found the 1 1/2" iron pipe lying flat on the ground in the vegetated lake bed of Nose Lake, 6' ± west of firm ground and 9'± east of the edge of the water at the time of this record . Using two of Winat's witnesses, the aluminum monument WCMC, and the oak at S 38° E, I set a 2 1/2" x 30" Oneida County aluminum monument, flush with the ground and stamped to show the location. All witnesses are shown below. I left the iron pipe on the ground near the monument. There is an old wire fence on the ground, running east along the south line of Section 13, marking the north line of the Woodboro cemetery. Vaughn's stump is no longer usable. It is loose and tipped toward the lake.

WITNESS MONUMENT TIES

- 15" white pine (found): N 34° E, 38.85'. Winat's nail is gone, so I set a new one in the side of the tree
- 12" oak (made): N 85° E, 18.28'. Set nail in the side of the tree
- Oneida County aluminum monument (WCMC-found): S 89°49'44" E, 10.00'
- Pine stump (OBT-found): S 58° E, 17.88'. Winat's nail was loose, so i reset it in the side of the stump.
- 12" oak (found): S 38° E, 17.18'. Winat's nail is in good condition. It was driven vertically into the tree root.



Not to scale  
Bearings magnetic

3(i) I, Anthony R. Jones, Wisconsin Professional Land Surveyor No S-2508, hereby certify that the corner location shown on this record was determined by me, and that this U.S. Public Land Survey Monument Record is correct and complete to the best of my knowledge and belief.

