

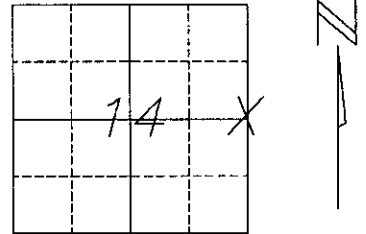
# U.S. PUBLIC LAND SURVEY MONUMENT RECORD

NOTE: This form is intended and designed to fulfill all requirements of Wisconsin Administrative Code, Chapter A-E 7.08 U.S. Public Land Survey Monument Record (3) (a)(b)(c)(d)(e)(f)(g)(h)(i). An additional sheet may be added if necessary to conform with said requirements.

(a) Corner location: Township 36 North  
 Range 7 East/West

Town/City/Village WOODBORO

County ONEIDA

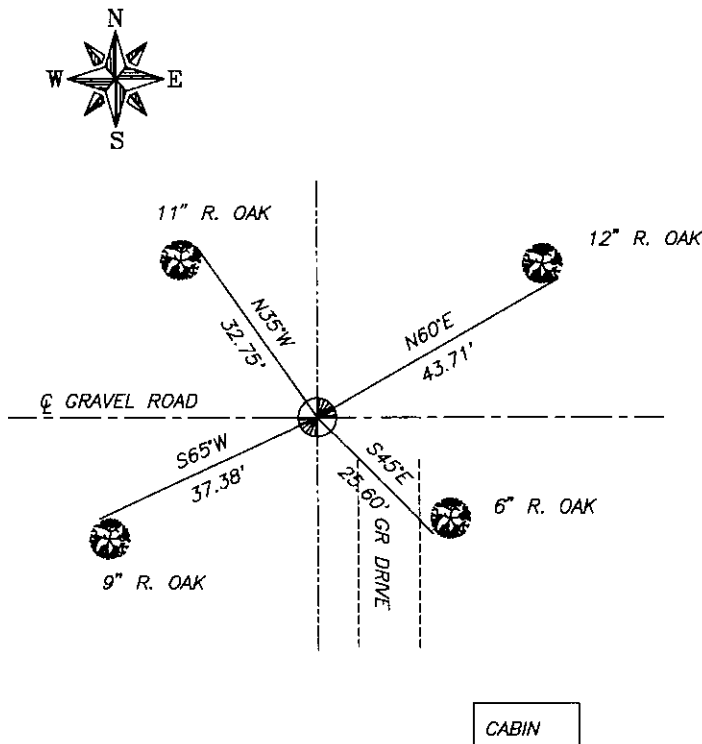


Section 14

(b)(f)(g)(h) Description of monument found at this corner and if it was accepted, state all evidence (material, testimonial, occupational, plats, records, other monuments) used as a basis for accepting. If not accepted or if nothing was found, state evidence used as basis for establishing location. If reestablished through lost corner proportionate methods, indicate all monuments, distances and directions used to establish. Indicate type of monument found or set and sign post.

ORIGINAL CORNER WAS SET IN NOVEMBER OF 1862 BY JOSEPH H. JENKINS. ORIGINAL BEARING TREES WERE AS FOLLOWS, 6" MAPLE-N49°W-49 LINKS, 8" BLACK OAK-N25°E-25 LINKS  
 ORIGINAL CORNER WAS FOUND IN NOVEMBER OF 1891 BY B.F. DORR  
 IRON PIPE WAS FOUND IN JULY OF 1937 BY MAINE. MAINE STATES RION PIPE IS THE ORIGINAL 1/4 STAKE. NO BT'S WERE NEAR. FOUND NO OTHER DOCUMENTATION ON THIS CORNER.  
 A 1 1/2" IRON PIPE WITH A 3/4" IRON PIPE INSIDE WAS FOUND AT THIS CORNER. I ACCEPTED THIS MONUMENT AND MADE TIES TO WITNESS TREES.

(c)(d)(e) Plan view of corner with ties to at least 4 witness monuments. If in disagreement with previously established corner, show the distances between the two corners and also indicate the ties to the disputed corner.



REGISTER OF DEEDS OFFICE  
 ONEIDA COUNTY, WIS  
**FILED**  
 OCT 28 1993  
 At 8:00 O'Clock AM  
 THOMAS H. LEIGHTON  
 REGISTER OF DEEDS



(i), DEVON VANDEN HEUVEL  
 (type or print name) certify that the corner location of this record was determined by me or under my direction and control and that this U.S. Public Land Survey Monument Record is correct and complete to the best of my knowledge and belief.

Devon Vanden Heuvel 9-20-93  
 Signature Date

Stamp

Index No L-21

L-21

3607142000