

U.S. PUBLIC LAND SURVEY MONUMENT RECORD

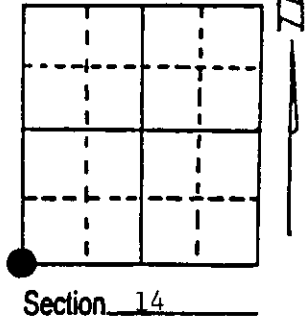
Note: This form is intended and designed to fulfill all requirements of Wisconsin Administrative Code, Chapter A-E 7.08 U.S. Public Land Survey Monument Record (3) (a) (b) (c) (d) (e) (f) (g) (h) (i). An additional sheet may be added if necessary to conform with said requirements.

(a) Corner location: Township 36 North

Range 7 East/West

Town/City/Village Woodboro

County Oneida



(b) (f) (g) (h) Description of monument found at this corner and if it was accepted, state all evidence (material, testimonial, occupational, plats, records, other monuments) used as a basis for accepting. If not accepted or if nothing was found, state evidence used as basis for establishing location. If reestablished through lost corner proportionate methods, indicate all monuments, distances and directions used to establish. Indicate type of monument found or set and sign post.

1862 - Joseph H. Jenkins established this corner and set a wood post with four BTs:
 8" Maple, N32°E, 7 Links 10" Birch, S51°E, 7 Links
 7" White Pine, S26°W, 30 Links 9" Y. Pine, N40°W, 12 Links

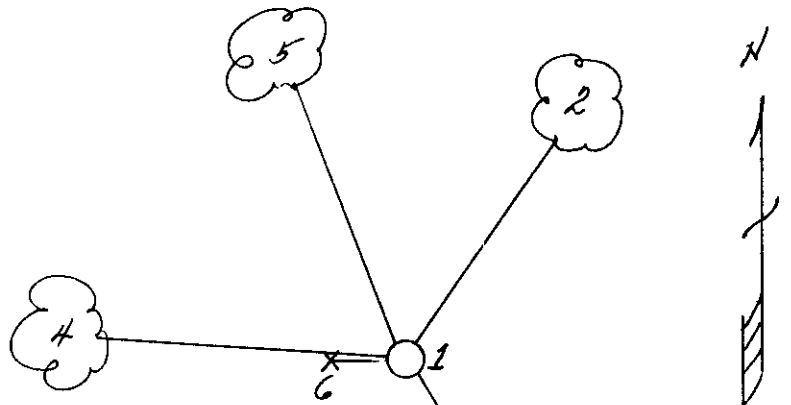
8/28/1937 - Maine set county monument from original Pine BTs. No new BTs made.

11/21/1990 - Milo E. Stefan found Maine's monument in excellent condition. Pine BTs now badly rotted stumps. Made four new BTs and set plastic sign post. Snowmobile trail Westerly 1 1/2 chains.

(c) (d) (e) Plan view of corner with ties to at least 4 witness monuments. If in disagreement with previously established corner, show the distances between the two corners and also indicate the ties to the disputed corner.

- 1) 2" x 60" iron pipe/brass cap
- 2) 12" Red Maple, N28°E, 37.97 feet
- 3) 12" Red Oak, S33°E, 52.05 feet
- 4) 12" White Birch, N86°W, 41.65 feet
- 5) 14" Red Oak, N38°W, 38.20 feet
- 6) Plastic sign post, West, 1.0 feet

Distances to nail in side of BTs.
 Stump blaze scribed "BT".



REGISTER OF DEEDS OFFICE
 ONEIDA COUNTY, WIS.
FILED
 DEC 12 1990
 At _____ O'Clock _____ M
THOMAS H. LEIGHTON
 REGISTER OF DEEDS

(i) I, Milo E. Stefan
 (type or print name) certify that the corner location on this record was determined by me or under my direction and control and that this U.S. Public Land Survey Monument Record is correct and complete to the best of my knowledge and belief.

Milo E Stefan

 Signature

12/5/90

 Date



3607150000
 Stamp

Index No. N-17

U.S. PUBLIC LAND SURVEY MONUMENT RECORD

Note: This form is intended and designed to fulfill all requirements of Wisconsin Administrative Code, Chapter A-E 7.08 U.S. Public Land Survey Monument Record (3)(a-i).

(a) CORNER LOCATION
 Cor. of Secs. 14, 15, 22 & 23
 Township 36 North
 Range 7 East of the 4th P.M.
 Town of Woodboro
 County of Oneida

WISCRS - Oneida County
 N: 151,277.03 USft
 E: 218,432.87 USft
 Datum: NAD 83(2011)
 GNSS Method: RTN - Direct
 GNSS Control: WISCORS VRS

	SEC. 15		
T36N	R7E		

(b) HISTORY OF ORIGINAL CORNER ESTABLISHMENT

Original Surveyor: _____ Original Accessories: _____
 Date of Survey Commenced: _____ See previous monument record(s)
 Completed: _____

(b)(f)(g)(h) Description of monument found at this corner and if it was accepted, state all evidence (material, testimonial, occupational, plats, records, other monuments) used as a basis for accepting. If not accepted or if nothing was found, state evidence used as basis for establishing location. If re-established through lost corner proportionate methods, indicate all monuments, distances and directions used to establish. Indicate type of monument and sign post found or set.

This is a perpetuation of the following monument record(s) that comprise a complete history of the corner:

Dec. 5, 1990: USPLS Monument Record No. 3607150000 by Milo E. Stefan, PLS

May 9, 2020: I found and accepted the record monument, a 2.4" diam. iron pipe with a 2.4" diam. brass cap projecting 26" above a collar of stone. The record w. birch 12" (dead) bears East, 41.6 ft. The record red maple 14" (dead) bears S25°W, 38.0 ft. I found or established accessories as shown below. I found a white vinyl sign post bearing West, 0.9 ft.

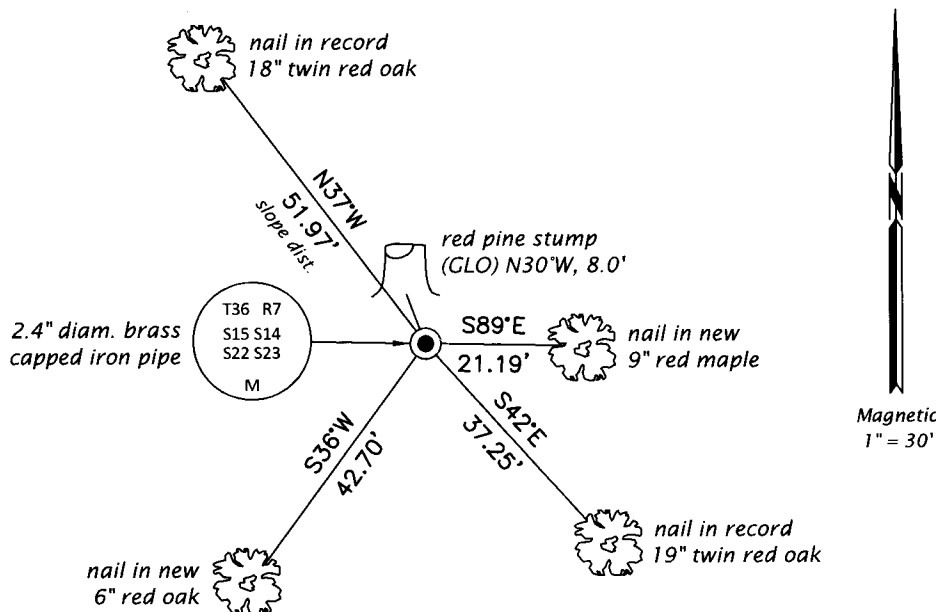
The coordinate value shown has been verified by at least one of the following methods: 1) comparison to a previously GPS determined published value; 2) the value is the average of two or more GPS observations at a markedly different time; 3) one or more distances were measured back to the GPS observed corner from temporary GPS observed offset locations.

REGISTER OF DEEDS OFFICE
ONEIDA COUNTY
FILED

JUN 26 2020

KYLE J. FRANSON
REGISTER OF DEEDS

(c)(d)(e) Plan view of corner with ties to at least 4 witness monuments. If in disagreement with previously established corner, show the distances between the two corners and also indicate the ties to the disputed.



(i) I, Jeffrey W. Austin, Professional Land Surveyor No. S-1885, hereby certify that the corner location on this record was determined by me or under my direction and control and that this U.S. Public Land Survey Monument Record is correct and complete to the best of my knowledge and belief.

 Signature Date JUNE 5, 2020