

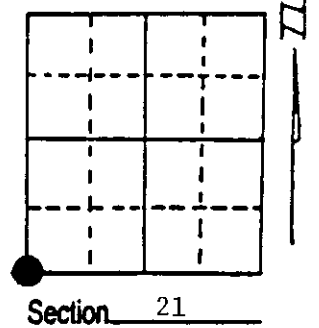
U.S. PUBLIC LAND SURVEY MONUMENT RECORD

Note: This form is intended and designed to fulfill all requirements of Wisconsin Administrative Code, Chapter A-E 7.08 U.S. Public Land Survey Monument Record (3) (a) (b) (c) (d) (e) (f) (g) (h) (i). An additional sheet may be added if necessary to conform with said requirements.

(a) Corner location: Township 36 North
 Range 7 East/West

Town/City/Village WOODBORO

County ONEIDA



(b) (f) (g) (h) Description of monument found at this corner and if it was accepted, state all evidence (material, testimonial, occupational, plats, records, other monuments) used as a basis for accepting. If not accepted or if nothing was found, state evidence used as basis for establishing location. If reestablished through lost corner proportionate methods, indicate all monuments, distances and directions used to establish. Indicate type of monument found or set and sign post.

November 1862 - Joseph H. Jenkins set wood post at 80.00 chains and BTs:
 8" Birch, N19°W, 26 Links 6" Fir, N57°E, 9 Links

8/10/1937 - Maine found an iron bar at corner with roots of original BTs. Vaughan was here prior to Maine and made a BT: 10" Birch, S39½°E, 42½ Links.

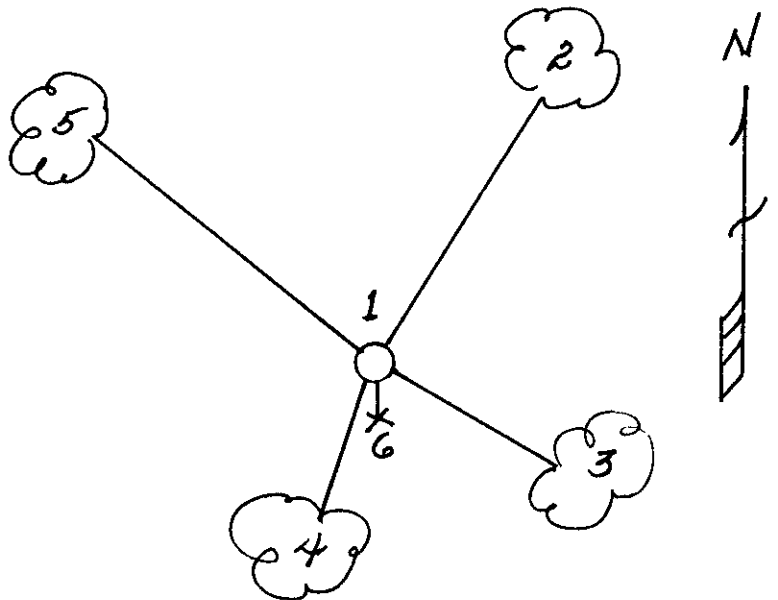
Maine placed a county monument here and tied to a 3' x 3' stone with an "X" N13½°E, 8.2 Links.

5/11/1994 - Milo E. Stefan ran traverse from West, North, East and South and found iron bar under 12" of ground. Tied to bar with traverse data. (See reverse of this sheet.) We replaced bar (1" x 4" x 36") with an aluminum monument, and made four new BTs and set plastic sign post.

(c) (d) (e) Plan view of corner with ties to at least 4 witness monuments. If in disagreement with previously established corner, show the distances between the two corners and also indicate the ties to the disputed corner.

- 1) 2" x 36" aluminum monument with 1" x 4" x 36" iron bar along side.
- 2) 6" Sugar Maple, N29°E, 63.02'.
- 3) 5" Sugar Maple, S70°E, 22.55'.
- 4) 6" Sugar Maple, S12°W, 10.17'.
- 5) 10" Red Oak, N63°W, 29.51'.
- 6) Plastic sign post, South, .7'.

Distances to nail in side of BT.
 Stump blazes scribed "BT".



(i) I, Milo E. Stefan
 (type or print name) certify that the corner location on this record was determined by me or under my direction and control and that this U.S. Public Land Survey Monument Record is correct and complete to the best of my knowledge and belief.

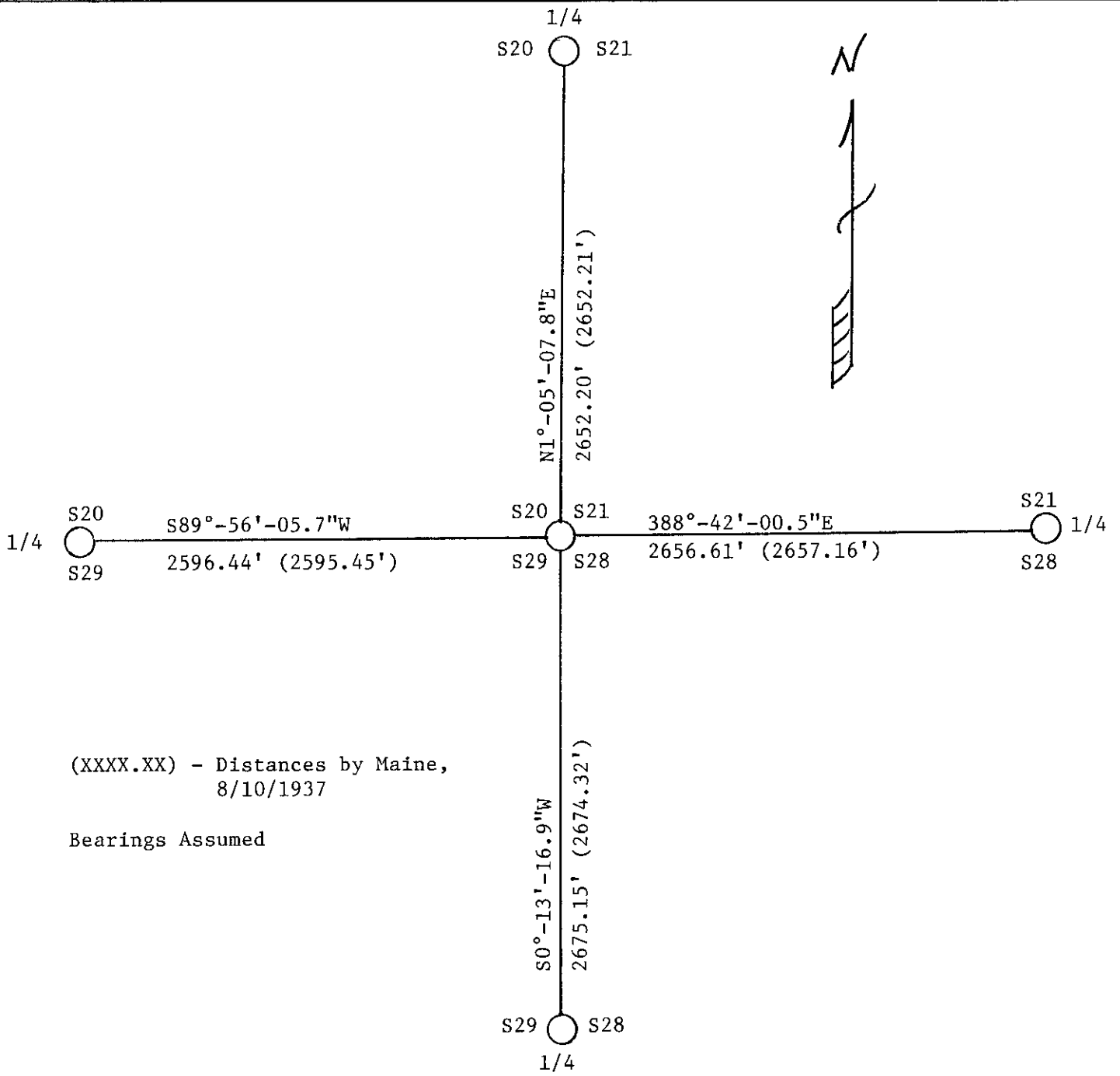
Milo E. Stefan
 Signature

May 19, 1994
 Date



Index No. R-9

3607200000
 Stamp



(XXXX.XX) - Distances by Maine,
8/10/1937

Bearings Assumed

REGISTER OF DEEDS OFFICE
 ONEIDA COUNTY WIS
FILED
 MAY 25 1994
 At 9⁰⁰ O'Clock A M
 THOMAS H. LEIGHTON
 REGISTER OF DEEDS