

U.S. PUBLIC LAND SURVEY MONUMENT RECORD

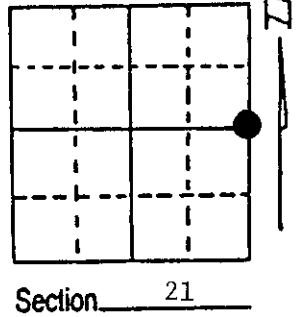
Note: This form is intended and designed to fulfill all requirements of Wisconsin Administrative Code, Chapter A-E 7.08 U.S. Public Land Survey Monument Record (3) (a) (b) (c) (d) (e) (f) (g) (h) (i). An additional sheet may be added if necessary to conform with said requirements.

(a) Corner location: Township 36 North

Range 7 East West

Town/City/Village Woodboro

County Oneida



(b) (f) (g) (h) Description of monument found at this corner and if it was accepted, state all evidence (material, testimonial, occupational, plats, records, other monuments) used as a basis for accepting. If not accepted or if nothing was found, state evidence used as basis for establishing location. If reestablished through lost corner proportionate methods, indicate all monuments, distances and directions used to establish. Indicate type of monument found or set and sign post.

November 1862 - Joseph H. Jenkins established this corner and set wood post and made two BTs:

12" W. Pine, N10°W, 37 Links 5" Fir, N87°E, 13 Links

9/16/1937 - Maine found remains of Pine BT and set an Oneida County Monument below road surface and placed "X" on a boulder 4' x 6', N74°E, 25 Links.

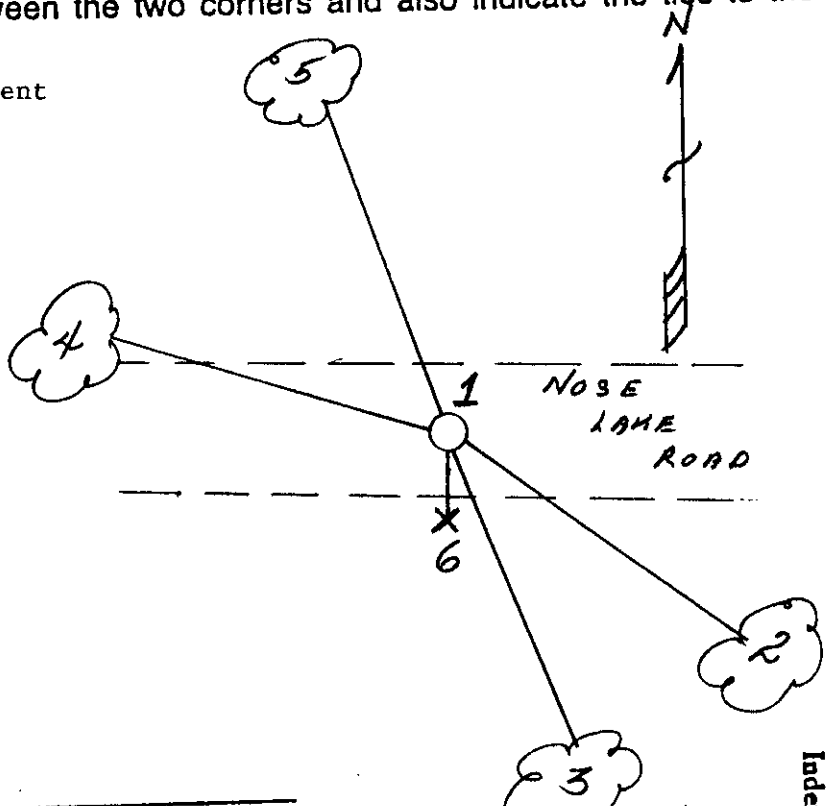
7/31/1989 - Milo E. Stefan found 2" x 60" iron pipe 2" below road surface badly bent. Location poster post leaning against tree on south side of road. Road constructed has moved and broken up boulder by Maine.

We unearthed 2" iron pipe and restored corner by placement of a new monument 8" below road surface, cut four new BTs and placed plastic sign post.

(c) (d) (e) Plan view of corner with ties to at least 4 witness monuments. If in disagreement with previously established corner, show the distances between the two corners and also indicate the ties to the disputed corner.

- 1) 2" x 30" Aluminum Oneida County Monument
- 2) 9" Red Oak, S59°E, 40.09'
- 3) 6" Red Maple, S23°E, 34.33'
- 4) 6" Red Oak, N76°W, 62.65'
- 5) 6" Red Maple, N21°W, 20.62'
- 6) Plastic sign post, South, 25.0'

Distances to nail in side of BTs.
BTs scribed "BT" in stump blaze.



(i) I, Milo E. Stefan
(type or print name) certify that the corner location on this record was determined by me or under my direction and control and that this U.S. Public Land Survey Monument Record is correct and complete to the best of my knowledge and belief.

Milo E. Stefan
Signature

8/5/89
Date



Index No. P-13

3607212000