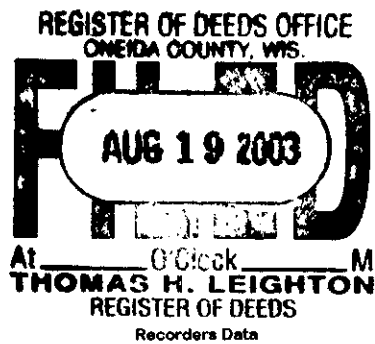


This form is intended to fulfill the requirements of Chapter A-E7.08 (3)(a) thru (i) U.S. Public Land Survey Monument Location Record, Wisconsin Administrative Code. Use the reverse side of form for continuation.



U.S. PUBLIC LAND SURVEY MONUMENT LOCATION RECORD

USPLS CORNER: NORTH 1/4 SECTION: 27 TOWNSHIP: 36 NORTH RANGE: 7 EAST
NAME OF WATERWAY FOR M.C. CORNER : N/A SECTION LINE: N/A
~~(CITY)(VILLAGE)(TOWN)~~ OF: WOODBORO COUNTY OF: ONEIDA

Description of monument found or placed and all other evidence used as the basis for monument location; including monuments and measurements required if the corner location was reestablished by lost corner proportionate methods. Also indicate name of the original surveyor, original survey date and the corner monument, bearing trees, witness or other reference monuments established, including measured bearing and distance ties, from available survey records.

Found and accepted an older 2" dia. galvanized iron pipe with stamped brass cap 34" up, which is tipped slightly SW but very stable for new ties to cap center. The corner falls about 140 feet North from the centerline of a woods road bearing N60°E/S60°W; I flagged a line South from the corner to the edge of woods road.

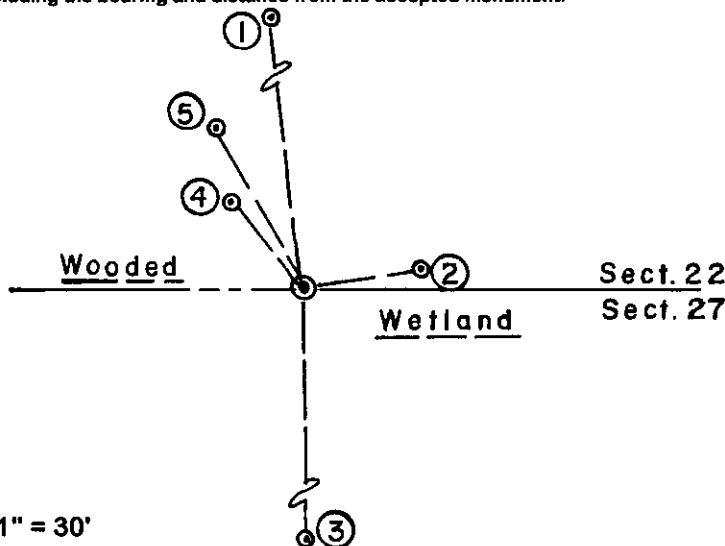
In November 1862, Joseph H. Jenkins/GLO set a wood post as the original corner and noted OBTs: 8" Cedar N43°E 16 links and a 12" Pw S07°W 35 links; all are now obliterated.

In July 1937, V.M. Maine/Oneida County Surveyor set an "official monument" at this corner; normally the latter brass capped iron pipe found this date, per Oneida County survey records.

In August 1996, Lester J. Schmit/RLS 1192 notes a 2" capped and stamped iron pipe by Maine in 1937 found in place per legend on his Plat of Survey filed as B-3838 in Oneida County survey records.

This recovery completed May 15, 2003; there were no direct witnesses.

Plan view map of monument location with bearing and distance ties to a minimum of four(4) described witness or reference monuments of concrete, natural stone, iron, live bearing trees or equivalent material. If applicable, also show a minimum of two(2) bearing and distance ties to any other monument found and not accepted; including the bearing and distance from the accepted monument.



WITNESS MONUMENT TIES:

- ① New BT 8.5" Aspen N07°W 50.67'.
- ② New 4" Pw BT N80°E 17.94'.
- ③ New 5" Aspen BT South 44.14'.
- ④ New 9" Tamarack BT N38°W 17.50'.
- ⑤ New 6" Fir BT N30°W 27.95'.

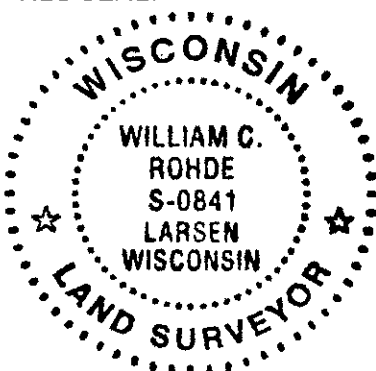
I set a standard white poly 'T' marker post 7" South of the corner monument.

I flagged the corner monument, all BTs and 'T' post with blaze orange tape.

SCALE: 1" = 30'

Unless otherwise indicated, all bearing tree ties are to a .25" dia. by 2.5" long PK nail with a 1.25" dia. steel washer driven into unblazed right face and a .25" dia. by 2.5" long PK nail with a 2" dia. steel washer stamped BT is also driven into unblazed face of bearing tree at DBH; the basis for measured bearings is by compass to nearest degree and all tie distances are measured horizontal by steel tape corrected to nearest 1/100th feet at standard temperature of 68° F.

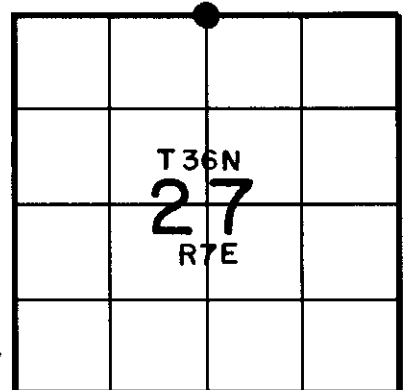
RLS SEAL:



LAND SURVEYOR CERTIFICATE:

I, William C. Rohde, hereby certify that I am duly licensed as a Professional Land Surveyor in the State of Wisconsin; that this USPLS monument location was determined by me and/or under my direct supervision and control; and that this U.S. Public Land Survey Monument Location Record is true and correct to the best of my knowledge and belief.

Signed: *William C. Rohde*
William C. Rohde RLS 841



SECTION LOCATION MAP INDEX NO. R-15

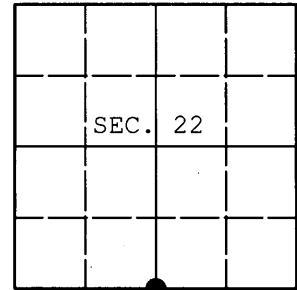
Date Signed: August 1, 2003

3607220020

U.S. PUBLIC LAND SURVEY MONUMENT RECORD

Note: This form is intended and designed to fulfill all requirements of Wisconsin Administrative Code, Chapter A-E 7.08 U.S. Public Land Survey Monument Record (3) (a) (b) (c) (d) (e) (f) (g) (h) (i). An additional sheet may be added if necessary to conform with said requirements.

(a) CORNER LOCATION: WISCRS (Oneida County)
1/4 Cor. of Secs. 22 & 27 N: 145,355.263 USft
Township 36 North E: 215,813.901 USft
Range 7 East of the 4th P.M. Datum: NAD 1983(2011)
Town of Woodboro County of Oneida



(b) HISTORY OF ORIGINAL CORNER ESTABLISHMENT

Original Surveyor: Original Accessories:
Date of Survey:

(b)(f)(g)(h) Description of monument found at this corner and if it was accepted, state all evidence (material, testimonial, occupational, plats, records, other monuments) used as a basis for accepting. If not accepted or if nothing was found, state evidence used as basis for establishing location. If re-established through lost corner proportionate methods, indicate all monuments, distances and directions used to establish. Indicate type of monument and sign post found or set.

NOTE: This is a perpetuation of a previous USPLS Monument Record by William C. Rohde, RLS dated August 1, 2003 and filed in the office of the Oneida County Register of Deeds. A complete history of the corner can be found on the previous monument record. I accept the previous location as a true and faithful perpetuation or reestablishment of the original corner location and further perpetuate it as follows.

October 31, 2013: I found and accepted Rohde's monument, a 2-1/2" diam. iron pipe with 2-1/2" diam. brass cap. Rohde's accessories were found in substantial agreement with his previous record and were not remeasured as the sole purpose of this work is to report the coordinates of the corner point.

The coordinates shown were derived from a direct RTN GPS observation referenced to the WISCRS network.

(c)(d)(e) Plan view of corner with ties to at least 4 witness monuments. If in disagreement with previously established corner, show the distances between the two corners and also indicate the ties to the disputed.

REGISTER OF DEEDS OFFICE
ONEIDA COUNTY
FILED

DEC 23 2013

AT O'CLOCK M
KYLE J. FRANSON
REGISTER OF DEEDS



(i) I, Jeffrey W. Austin, Registered Land Surveyor No. S-1885, hereby certify that the corner location on this record was determined by me or under my direction and control and that this U.S. Public Land Survey Monument Record is correct and complete to the best of my knowledge and belief.

Signature [Handwritten Signature] Date DEC. 9, 2013