

This form is intended to fulfill the requirements of Chapter A-E 7.08 (3)(a) thru (i) U.S. Public Land Survey Monument Location Record, Wisconsin Administrative Code. Use the reverse side of form for continuation.

U.S. PUBLIC LAND SURVEY MONUMENT LOCATION RECORD

Recorders Data

USPLS CORNER: **NORTHWEST** SECTION: **25** TOWNSHIP: **36** NORTH RANGE: **7** EAST

NAME OF WATERWAY FOR M.C. CORNER : **N/A** SECTION LINE: **N/A**

(CITY)(VILLAGE)(TOWN) OF: **WOODBORO** COUNTY OF: **ONEIDA**

Description of monument found or placed and all other evidence used as the basis for monument location; including monuments and related measurements required if the corner location was reestablished by lost corner proportionate methods. Also indicate name of original surveyor, original survey date and the corner monument, bearing trees, witness or other reference monuments established; including measured bearing and distance ties, from available records.

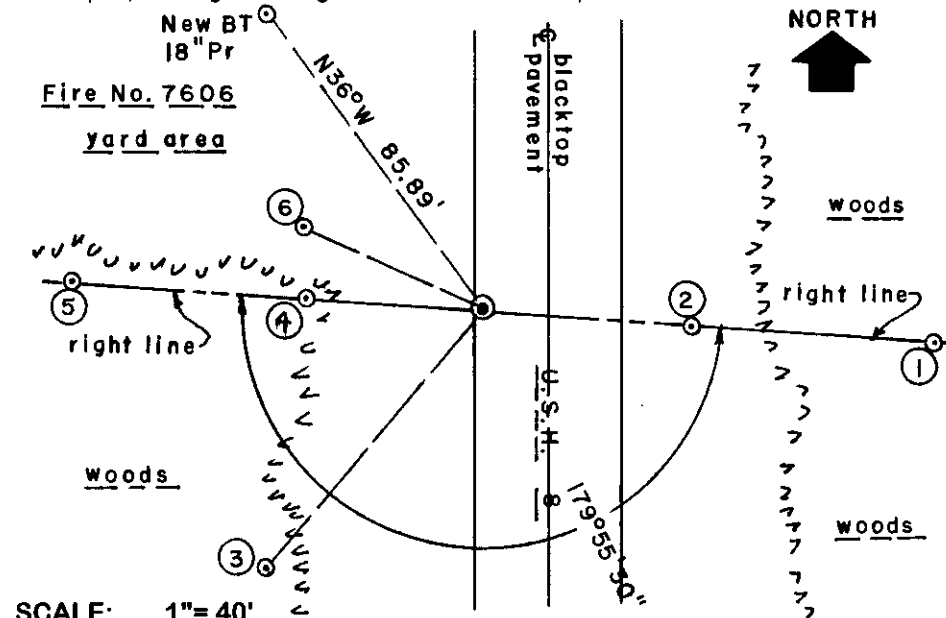
Found and accepted an older 1/4" dia. by 1.25" long PK nail at this corner location in existing blacktop road pavement, which I reset with a 7/16" dia. by 3.5" long sawed off galvanized spike and marked it with an orange paint keel cross in pavement surface above very strong magnetic locator readings which fell below the corner location within 0.05 to 0.10 feet. Corner falls 1.1 feet East of West edge of existing roadway pavement mat.

In November 1862, Joseph H. Jenkins/GLO set a wood post as the original corner and marked OBTs: a 10" Bw N50°W 21 links, a 12" Bw N73°E 44? links, a 12" Pw S03°W 18 links and a 14" Bw S70°W 24 links, all of which are obliterated within existing roadway area.

In August 1978, Jerome Kramer/RLS 1448, set a 1" dia. iron pipe on top of a 1" dia. iron rod found at the corner and noted new ties: a 1.25" dia. iron pipe West 86.19', found OK; an 8" spike in telephone pole N67°W 40.47', found OK and an 8" spike in a telephone pole S72°W 56.00', now gone; all per plat of survey filed as C-412 in Oneida County survey records. In January 1983, Lester Schmit/RLS 1192, notes an iron rod found at this corner and an iron pipe reference monument S89°38'35"E 93.86', found and used for new ties below, per plat of survey filed as B-3368 in Oneida County survey records. In November 1998, Russell Brown, RLS 2148, notes a PK nail found at this corner and a 1" iron pipe reference monument S85°51'53"E 93.77' per plat of survey filed as B-4051 in Oneida County survey records and as noted and found above. I set a standard white poly 'T' marker post near first witness monument West of corner.

This recovery completed October 1, 1999; there were no direct witnesses other than many vehicle drive-bys.

Plan view map of monument location with bearing and distance ties to a minimum of four(4) described witness or reference monuments of concrete, natural stone, iron, live bearing trees or equivalent material. If applicable, also show a minimum of two(2) bearing and distance ties to any other monument found and not accepted; including the bearing and distance from the accepted monument.



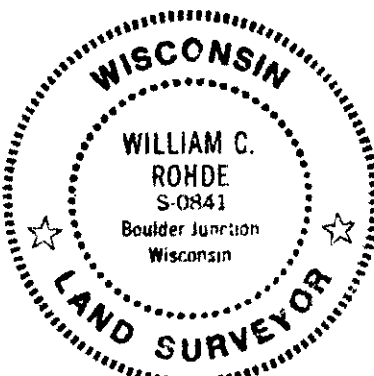
WITNESS MONUMENT TIES:

- ① Old 1" dia. iron pipe found OK with top 2" up S85°55'30"E 93.80'.
- ② 1" dia. by 24" long iron pipe set with standard yellow poly Reference Mark cap flush S85°55'30"E 43.30'.
- ③ Same as ② S40°W 70.48'.
- ④ Same as ③ N86°W 36.93'.
- ⑤ 1.25" dia. iron pipe found OK with top 1.5" up N86°W 86.19'.
- ⑥ Old 60d spike found in south face of power pole N65°W 40.45'. Witness monuments 1, 2, 3 and 4 are on right lines to corner monument.

SCALE: 1" = 40'

Unless otherwise indicated, all bearing tree ties are to a .25" dia. by 2.5" long PK nail with a 1.25" dia. steel washer driven into unblazed right face and a .25" dia. by 2.5" long PK nail with a 2" dia. steel washer stamped BT is also driven into unblazed face of bearing tree at DBH; the basis for measured bearings is by compass to nearest degree and all tie distances are measured horizontal by steel tape corrected to nearest 1/100th feet at standard temperature of 68° F.

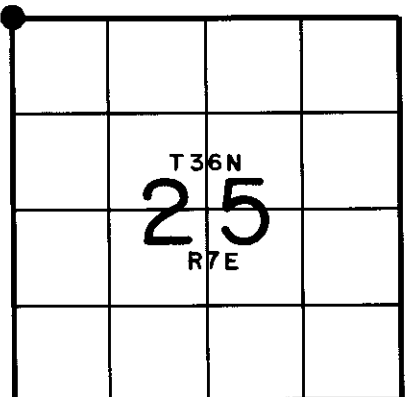
RLS SEAL:



LAND SURVEYOR CERTIFICATE:

I, William C. Rohde, hereby certify that I am duly licensed as a Professional Land Surveyor in the State of Wisconsin; that this USPLS monument location was determined by me and/or under my direct supervision and control; and that this U.S. Public Land Survey Monument Location Record is true and correct to the best of my knowledge and belief.

Signed: *William C. Rohde*
William C. Rohde RLS 841



SHEET 1 OF 1
FORM REVISED: 06/01/99

Date Signed: **March 23, 2000**

SECTION LOCATION MAP

INDEX NO. R 21

3607230000

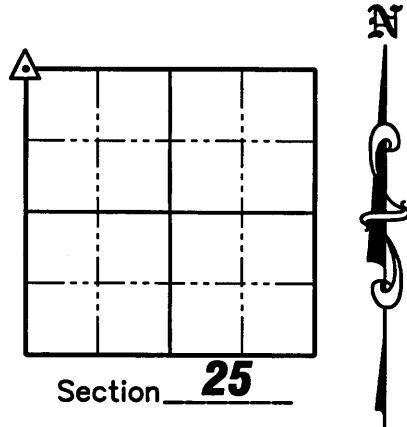
U.S. PUBLIC LAND SURVEY MONUMENT RECORD

NOTE: This form is intended and designed to fulfill all requirements of Wisconsin Administrative Code, Chapter A-E 7 .08 U.S. Public Land Survey Monument Record (3)(a)(b)(c)(d)(e)(f)(g)(h)(i). An additional sheet may be added if necessary to conform with said requirements.

(a) Corner location: Township 36 North
 Range 7 East

Town of Woodboro

County of Oneida



(b)(f)(g)(h) Description of monument found at this corner and if it was accepted, state all evidence (material, testimonial, occupation, plats, records, other monuments) used as a basis for accepting. If not accepted or if nothing was found, state evidence used as a basis for establishing location. If reestablished through lost corner proportionate methods, indicate all monuments, distances and directions used to establish. Indicate type of monument found or set and sign post.

November, 1862 – Joseph H. Jenkins/GLO set a wood post as the original corner and marked BT's: 10" Birch, N50°W, 21 links; 12" Birch, N73°E, 44 links; 12" Yellow Pine, S03°W, 18 links; 14" Birch S70°W, 24 links, which are now obliterated within existing roadway area.

August 1978 – Jerome Kramer/RLS 1448 set a 1" dia. iron pipe on top of a 1" dia. iron rod found at the corner and noted new ties: a 1.25" dia. iron pipe, West, 86.19 feet, found OK; an 8" spike in telephone pole N67°W, 40.47 feet, found OK and an 8" spike in a telephone pole S72°W, 56.00 feet – per Plat of Survey filed as C-412 in Oneida County survey records.

January 1983 – Lester Schmit/RLS 1192 – notes an iron rod found at this corner and an iron pipe reference monument S89°38'35"E, 93.86 feet – per Plat of Survey filed as B3368 in Oneida County survey records.

November 1998 – Russell Brown/RLS 2140 notes a PK nail found at this corner and a 1" iron pipe reference monument S85°51'53"E, 93.77 feet – per Plat of Survey filed as B-4051 in Oneida County survey records.

October 1, 1999 – William C. Rohde found and accepted an older 1/4" dia. by 1.25" long PK nail at this corner location in existing blacktop road pavement, which I reset with a 7/16" dia. by 3.5" long sawed off galvanized spike and marked it with an orange paint keel cross in pavement surface above very strong magnetic locator reading which fell below corner location within 0.05 to 0.10 feet. Corner falls 1.1 feet East of West edge of existing roadway pavement mat. He also set 4 new Witness Corners

July 22, 2008 – Jonathan W. Dulin found five of William Rohde's Witness Monuments, but the P.K. nail was missing, due to Highway "B" being repaved a couple of years ago. I reset a survey nail 1.1' East of the West edge of the existing blacktop road and witnessed the corner as shown on sheet 2 hereof.

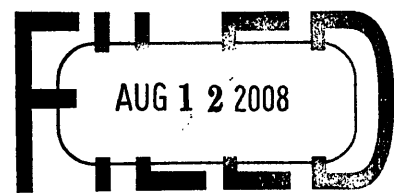
(c)(d)(e) Plan view of corner with ties to at least 4 witness monuments. If in disagreement with previously established corner, show the distances between the two corners and also indicate the ties to the disputed corner.

See Sheet 2 hereof

(i) I, Jonathan W. Dulin, certify that the corner location on this record was determined by me under my direction and control and that this U.S. Public Land Survey Monument is correct and complete to the best of my knowledge and belief.

Signature Jonathan W. Dulin Date 8-7-2008

REGISTER OF DEEDS OFFICE
 ONEIDA COUNTY, WIS.



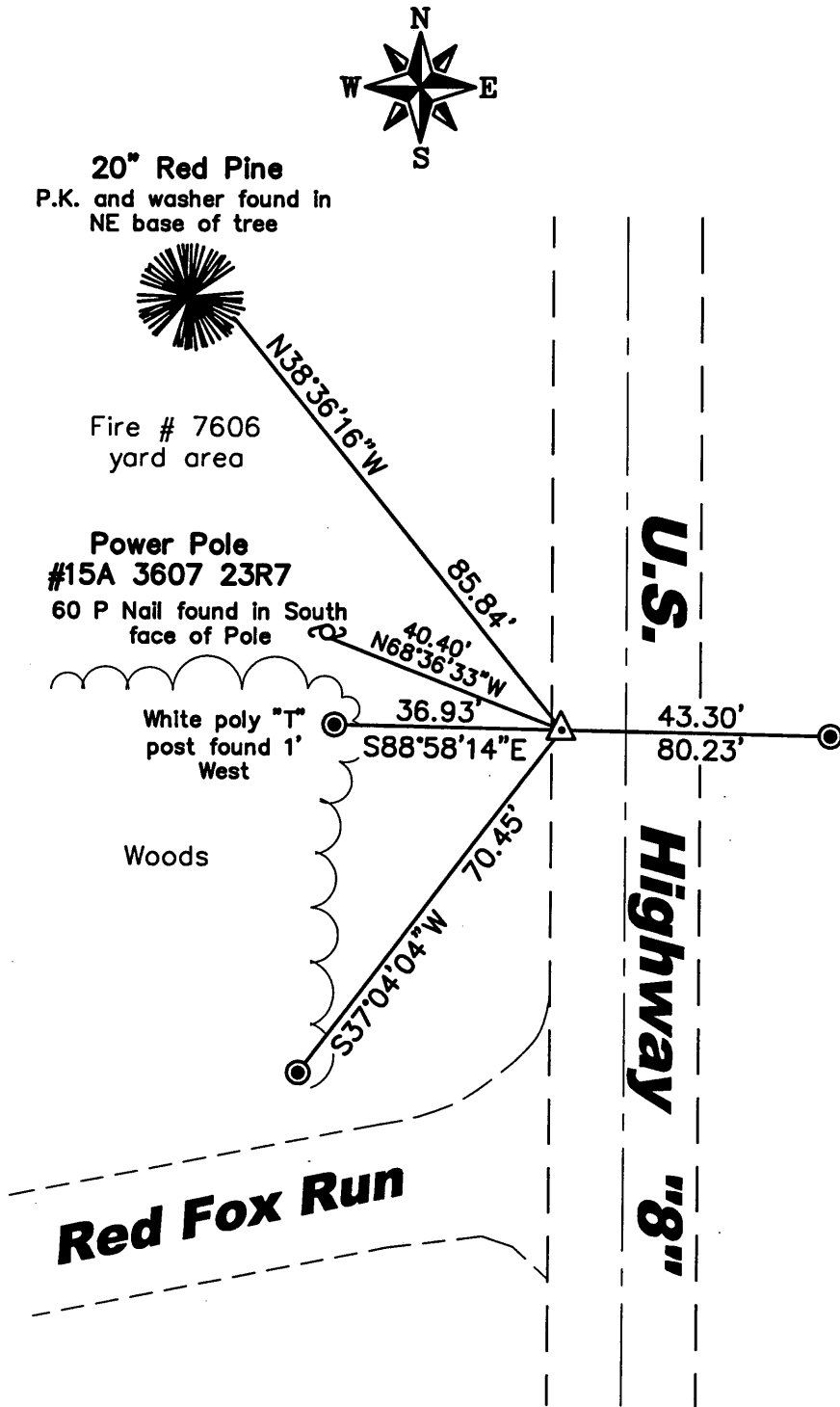
At _____ O'Clock _____ M.
 THOMAS H. LEIGHTON
 REGISTER OF DEEDS

Sheet 1 of 2




3607230000

Index No. R-21

U.S. PUBLIC LAND SURVEY MONUMENT RECORD



Legend

-  Set Survey Nail
-  Found 1" Iron Pipe
W/Yellow Poly Reference Cap
-  Found Nail in Power Pole

GRAPHIC SCALE



(IN FEET)

U.S. PUBLIC LAND SURVEY MONUMENT RECORD

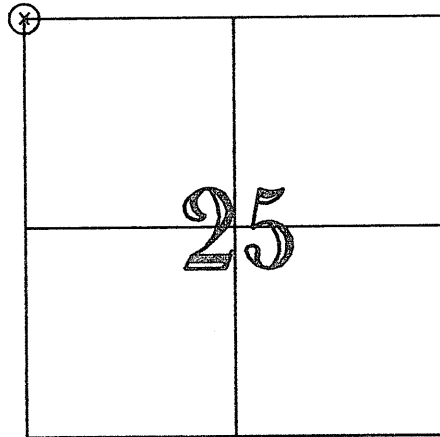
INDEX NO R-21

TYPE OF MONUMENT SURVEY MARKER NAIL

SECTION 25, T36N-R7E
 COORDINATE SYSTEM WCCS ONEIDA CO.

COORDINATES N 145,405.28 E 223,596.48 E

CORNER SET BY DENNIS J. CHRISTIE
 PROFESSIONAL LAND SURVEYOR S-1452
 TNT Professional Land Surveyors
 2154 Early St., Green Bay, WI 54304



LOCATION SKETCH

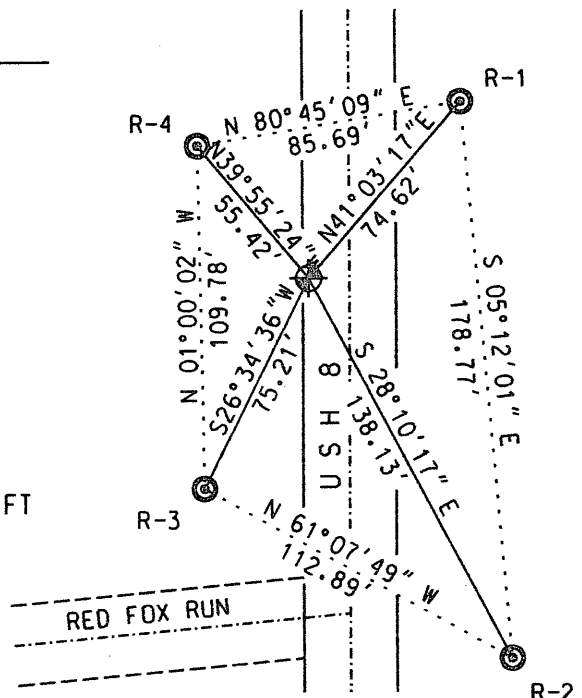
ONEIDA COUNTY COORDINATES

R-1	145,461.55 N	223,645.49 E
R-2	145,283.51 N	223,661.69 E
R-3	145,338.02 N	223,562.83 E
R-4	145,447.78 N	223,560.91 E



SCALE: 1 IN = 50 FT

- BERNTSEN SURVEY NAIL
- WisDOT REFERENCE MONUMENT



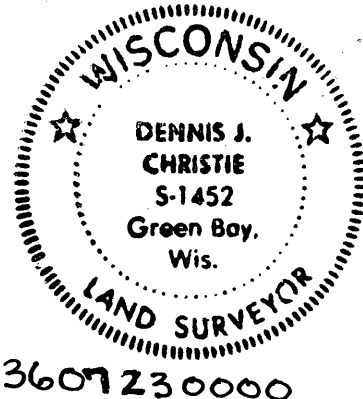
THIS CORNER WAS TIED USING A TOTAL STATION BEFORE THE WisDOT RESURFACING PROJECT BY NORTHEAST ASPHALT, INC. AFTER THE WisDOT PROJECT FINISHED RESURFACING USH 8. I SET A SURVEY MARKER NAIL AT THE PREVIOUSLY TIED DOWN SECTION CORNER AND SET FOUR NEW TIES AS SHOWN ON THIS SHEET.

SURVEYOR'S AFFIDAVIT

I HEREBY CERTIFY THAT THIS MONUMENT CONFORMS TO THE ORIGINAL GOVERNMENT SURVEYS AND THAT THIS MONUMENT RECORD IS INTENDED TO UPDATE THE MONUMENT RECORDS FILED BY WILLIAM C. ROHDE (RLS 841), DATED MARCH 23, 2000 AND JOHNATHAN W. DULIN (RLS 2754), DATED AUGUST 7, 2008.

Dennis J. Christie 11/17/15

 DENNIS J. CHRISTIE, PLS 1451 DATE



R-21

MAP # _____

DATE FILED / / _____

BY _____

DESCRIPTION FILED _____

ONEIDA CO. SURVEYOR'S OFFICE

REGISTER OF DEEDS OFFICE
 ONEIDA COUNTY
 FILED

DEC 01 2015

AT _____ O'CLOCK _____ M
 KYLE J. FRANSON
 REGISTER OF DEEDS