

This form is intended to fulfill the requirements of Chapter A-E 7.08 (3)(a) thru (i) U.S. Public Land Survey Monument Location Record, Wisconsin Administrative Code. Use the reverse side of form for continuation.

U.S. PUBLIC LAND SURVEY MONUMENT LOCATION RECORD

USPLS CORNER: SOUTH WITNESS MC SECTION: 24 TOWNSHIP: 36 NORTH RANGE: 7 EAST

NAME OF WATERWAY FOR M.C. CORNER : NOSE LAKE SECTION LINE: WEST

~~(CITY)(VILLAGE)(TOWN)~~ OF: WOODBORO COUNTY OF: ONEIDA

Description of monument found or placed and all other evidence used as the basis for monument location; including monuments and related measurements required if the corner location was reestablished by lost corner proportionate methods. Also indicate name of original surveyor, original survey date and the corner monument, bearing trees, witness or other reference monuments established; including measured bearing and distance ties, from available records.

No iron pipe monument found per records at this corner, so I reestablished corner location by transit/tape projection from iron pipe monuments found along lakeshore for Lot 1 of CSM No. 548 in Oneida County records. Prior to resetting the corner, careful scalping promptly revealed an unmistakable soil cavity below grade, obviously left by the 1" dia. iron pipe monument of record prior to its previous removal by some unknown person; therefore, I drove a standard 2" dia. by 30" long aluminum pipe monument with stamped Oneida County cap into the iron pipe soil cavity found to grade in lawn area of adjacent lake frontage lot West of the corner at Fire No. 7592 Nose Lake Road.

- In November 1862, Joseph H. Jenkins/GLO set a wood post as original corner and marked OBTs: a 10" Py S10°W 18 links and a 24" Pw S46°E 11 links; all are now obliterated.

- In July 1937, V.M. Maine notes a probable monument at this corner per his field notes sketch of Section 23 in Oneida County survey records.

- In May 1956, Joseph C. Kirby/RLS 253 notes an iron pipe at this corner per Plat of Survey filed as C-983 in Oneida County survey records.

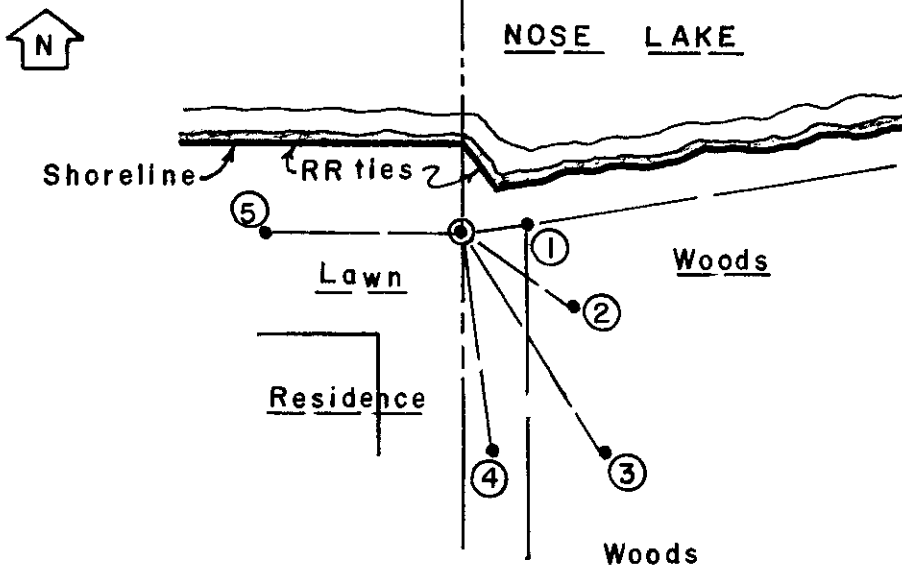
- In July 1959, Joseph C. Kirby/RLS 253 notes a circle symbol as MC at this corner by Maine and a 20" Pr BT S39°E 41.0', found OK this date and used for new ties, per Plat of Survey filed as B-3053 in Oneida County survey records.

- In December 1977, March 1978, April 1980 and November 1983, William G. Immich/RLS1383 notes an iron pipe as MC at this corner per CSM 514, CSM 548, CSM 778 and Plat of Survey A-111 in Oneida County records.

- In August 1994, William Badow/RLS 1182 notes a 1" iron pipe at this corner per Plat of Survey filed as B-2965 in Oneida County survey records.

This recovery completed November 21, 2002; there were no direct witnesses.

Plan view map of monument location with bearing and distance ties to a minimum of four(4) described witness or reference monuments of concrete, natural stone, iron, live bearing trees or equivalent material. If applicable, also show a minimum of two(2) bearing and distance ties to any other monument found and not accepted; including the bearing and distance from the accepted monument.



WITNESS MONUMENT TIES:

- ① Uncapped 1" dia. iron pipe found 5" up at NW corner of Lot 1 of CSM No. 548 N80°E 10.30'.
- ② New 9" Mr BT S56°E20.90'.
- ③ Old 18" Pr BT S33°E 41.35'; nailed standard BT sign to upper face.
- ④ New 12" Oak BT S08°E 34.04'.
- ⑤ New 11" Pw BT West 30.69'.

NE corner of wood frame residence is S40°W 21.2'.

Standard white poly 'T' marker post set S60°E 3.5' from corner monument at edge of wooded area SE of corner.

SCALE: 1" = 30'

Unless otherwise indicated, all bearing tree ties are to a .25" dia. by 2.5" long PK nail with a 1.25" dia. steel washer driven into unblazed right face and a .25" dia. by 2.5" long PK nail with a 2" dia. steel washer stamped BT is also driven into unblazed face of bearing tree at DBH; the basis for measured bearings is by compass to nearest degree and all tie distances are measured horizontal by steel tape corrected to nearest 1/100th feet at standard temperature of 68° F.

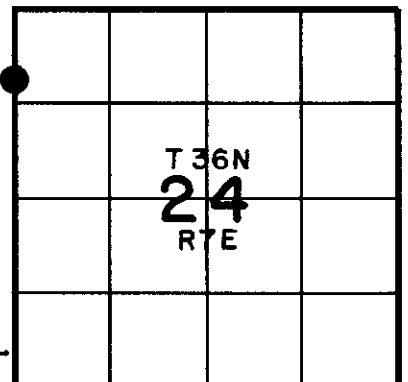
RLS SEAL:



LAND SURVEYOR CERTIFICATE:

I, William C. Rohde, hereby certify that I am duly licensed as a Professional Land Surveyor in the State of Wisconsin; that this USPLS monument location was determined by me and/or under my direct supervision and control; and that this U.S. Public Land Survey Monument Location Record is true and correct to the best of my knowledge and belief.

Signed: *William C. Rohde*
William C. Rohde RLS 841



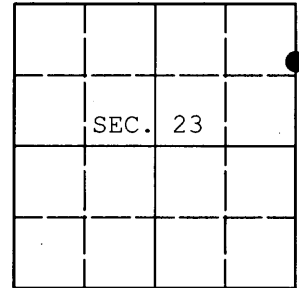
SECTION LOCATION MAP

INDEX NO. N-0 2.1

U.S. PUBLIC LAND SURVEY MONUMENT RECORD

Note: This form is intended and designed to fulfill all requirements of Wisconsin Administrative Code, Chapter A-E 7.08 U.S. Public Land Survey Monument Record (3) (a) (b) (c) (d) (e) (f) (g) (h) (i). An additional sheet may be added if necessary to conform with said requirements.

(a) CORNER LOCATION: WISCRS (Oneida County)
Meander Cor. of Secs. 23 & 24 N: 150,100.954 USft
Township 36 North E: 223,665.603 USft
Range 7 East of the 4th P.M. Datum: NAD 1983(2011)
Town of Woodboro County of Oneida



(b) HISTORY OF ORIGINAL CORNER ESTABLISHMENT

Original Surveyor: Original Accessories:
Date of Survey:

(b) (f) (g) (h) Description of monument found at this corner and if it was accepted, state all evidence (material, testimonial, occupational, plats, records, other monuments) used as a basis for accepting. If not accepted or if nothing was found, state evidence used as basis for establishing location. If re-established through lost corner proportionate methods, indicate all monuments, distances and directions used to establish. Indicate type of monument and sign post found or set.

NOTE: This is a perpetuation of a previous USPLS Monument Record by William C. Rohde, RLS dated March 1, 2003 and filed in the office of the Oneida County Register of Deeds. A complete history of the corner can be found on the previous monument record. I accept the previous location as a true and faithful perpetuation or reestablishment of the original corner location and further perpetuate it as follows.

October 31, 2013: I found and accepted Rohde's monument, a 2-1/2" diam. aluminum pipe with 3-1/4" diam. Oneida Co. aluminum cap. Rohde's accessories were found in substantial agreement with his previous record and were not remeasured as the sole purpose of this work is to report the coordinates of the corner point.

The coordinates shown were derived from a direct RTN GPS observation referenced to the WISCORS network.

(c) (d) (e) Plan view of corner with ties to at least 4 witness monuments. If in disagreement with previously established corner, show the distances between the two corners and also indicate the ties to the disputed.

REGISTER OF DEEDS OFFICE
ONEIDA COUNTY
FILED

DEC 23 2013

AT O'CLOCK M
KYLE J. FRANSON
REGISTER OF DEEDS



(i) I, Jeffrey W. Austin, Registered Land Surveyor No. S-1885, hereby certify that the corner location on this record was determined by me or under my direction and control and that this U.S. Public Land Survey Monument Record is correct and complete to the best of my knowledge and belief.

Signature [Handwritten Signature]

Date DEC 9, 2013