

CERTIFIED LAND CORNER RESTORATION

Index No.....

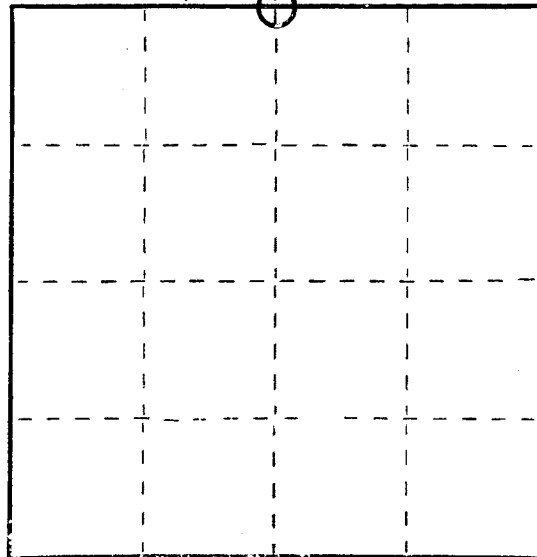
State of Wisconsin }
County of Oneida } ss.

I, Jerome N. Kraemer, do hereby certify that on the 4th day of May, 1978, I found evidence of the North one-quarter corner of Section 25 Township 36 North, Range 7 East, Fourth Principal Meridian, as described hereon; and that from this evidence I established a new monument and accessories as described hereon to perpetuate the original location of this corner.

Resident witnesses:

None

Section 25, T36N, R7E



○ = Corner monument restored.

History of original corner establishment:

Original corner post established by Alex Anderson in November, 1862.

Original bearing trees:

Y. Pine 15", S49°W, 12 links (7.92 feet)
W. Pine 12", N59°W, 12 links (7.92 feet)

Description of corner evidence found:

Searched for corner at proportionate distance but no evidence was found.

Description of monument and accessories I established to perpetuate the original location of this corner.

Set Oneida County Survey Marker (Cast aluminum Berntsen Monument) 3-1/2" Cap, 2" inside diameter and 30" long, Scribed Tamarack post. Found 1-1/4" well point at end of east-west fence, 1351.82 feet West of northeast corner of Section 25. Accepted 1-1/4" well point as the one-eighth corner and extended a line Westerly for 1351.82 feet.

Made bearing trees:

Set P.K. nail in 5" Maple, N22°W, 16.05 feet,
Set P.K. nail in 18" Norway Pine, S27°W, 76.41 feet,
Set P.K. nail in 18" White Pine, S72°W, 69.80 feet.

Scribed bearing trees.

Dated at Minocqua, Wis., this 27th day of December, 1978

Signature *Jerome N. Kraemer* Title Registered Land Surveyor Registration No. 1446
(County Surveyor, Registered Land Surveyor, or other duly authorized official)

Office of Register of Deeds, County of....., I hereby certify that the within instrument was filed in this office for record on the.....day of....., 19..... at.....o'clock..... M.

(Register of Deeds)

By.....Deputy

REGISTER OF DEEDS OFFICE
ONEIDA COUNTY
FILED

JUN 22 2017

AT.....O'CLOCK.....M
KYLE J. FRANSON
REGISTER OF DEEDS

FORM 095 H. C. MILLER CO., MILWAUKEE

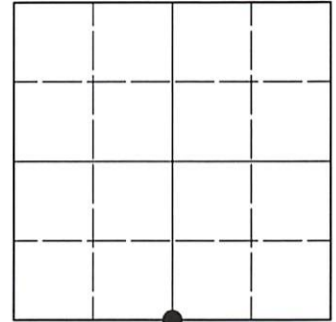
3607240020

U.S. PUBLIC LAND SURVEY MONUMENT RECORD

Note: This form is intended and designed to fulfill all requirements of Wisconsin Administrative Code, Chapter A-E 7.08 U.S. Public Land Survey Monument Record (3)(a-i).

(a) CORNER LOCATION
 1/4 Cor. of Secs. 24 & 25
 Township 36 North
 Range 7 East of the 4th P.M.
 Town of Woodboro
 County of Oneida

WISCRS - Oneida County
 N: 145,387.23 USft
 E: 226,304.22 USft
 Datum: NAD 83(2011) ep. 2010.00
 GNSS Method: RTN - Direct
 GNSS Control: WISCORS VRS



Sec. 24, T. 36 N., R. 7 E.

(b)(f)(g)(h) Description of monument found at this corner and if it was accepted, state all evidence (material, testimonial, occupational, plats, records, other monuments) used as a basis for accepting. If not accepted or if nothing was found, state evidence used as basis for establishing location. If re-established through lost corner proportionate methods, indicate all monuments, distances and directions used to establish. Indicate type of monument and sign post found or set.

This record is a perpetuation of the following land corner document(s):

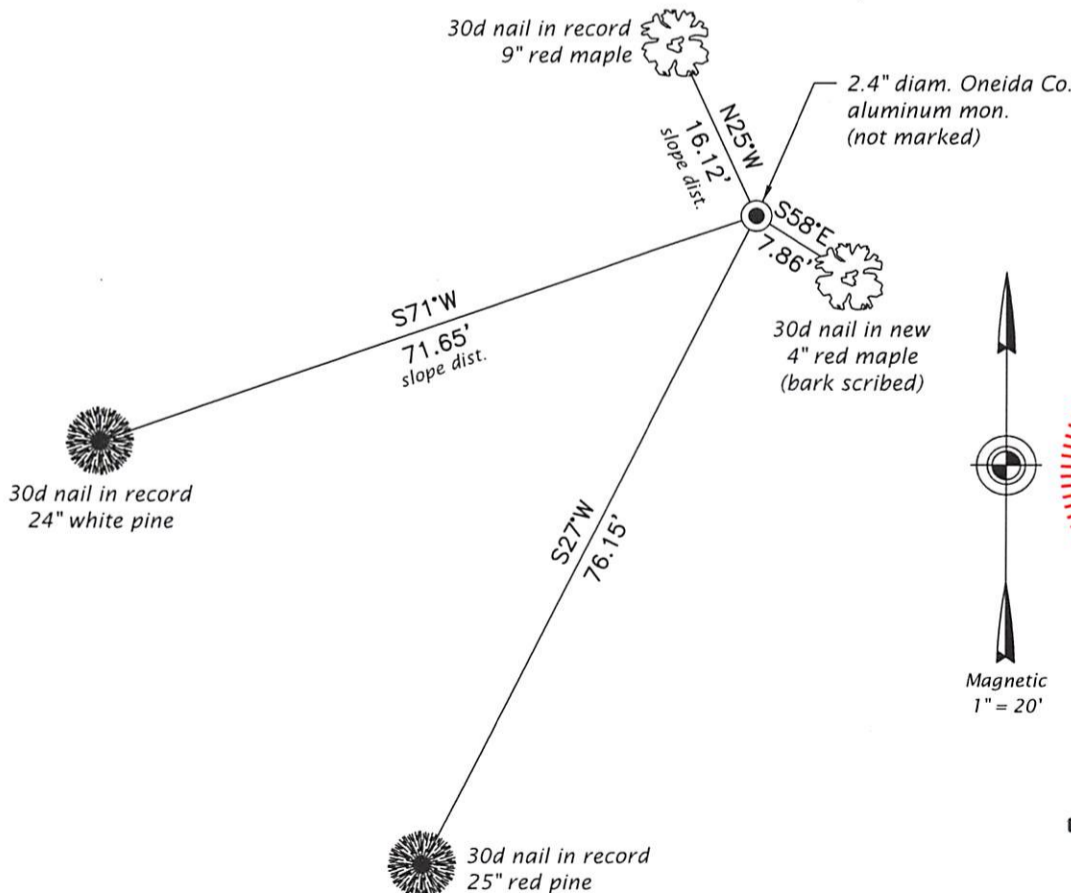
Dec. 27, 1978: Certified Land Corner Restoration by Jerome N. Kraemer, filed in Oneida County

A complete history of the corner can be found on the previous land corner document(s). I accept the record activity as a true and faithful perpetuation or reestablishment of the original corner location and further perpetuate it as described below.

May 14, 2021: I found and accepted the record monument, a 2.4" diam. aluminum pipe with a 3.3" diam. Oneida Co. aluminum cap (not marked) projecting 3" above the ground surface. I found or established accessories as shown below. I set a white vinyl sign post bearing Northwest, 1.0 ft.

The coordinate value shown has been verified by at least one of the following methods: 1) comparison to a previously GNSS determined published value; 2) the value is the average of two or more GNSS observations at a markedly different time; 3) one or more distances were measured back to the GNSS observed corner from temporary GNSS observed offset locations.

(c)(d)(e) Plan view of corner with ties to at least 4 witness monuments. If in disagreement with previously established corner, show the distances between the two corners and also indicate the ties to the disputed.

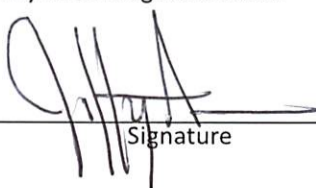


REGISTER OF DEEDS OFFICE
 ONEIDA COUNTY
 FILED

JUN 23 2021

KYLE J. FRANSON
 REGISTER OF DEEDS

(i) I, Jeffrey W. Austin, Professional Land Surveyor No. S-1885, hereby certify that the corner location on this record was determined by me or under my direction and control and that this U.S. Public Land Survey Monument Record is correct and complete to the best of my knowledge and belief.


 Signature

MAY 20, 2021
 Date