

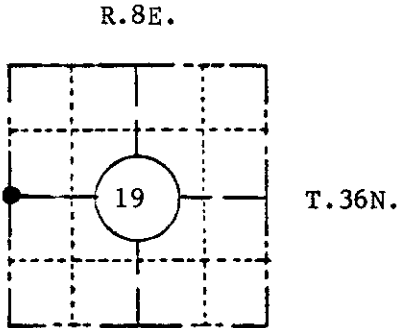
U. S. PUBLIC LAND SURVEY MONUMENT RECORD

INSTRUCTIONS: This record shall show the location of the corner and shall include all of the following nine elements (a through i).

- (a) Identify the corner by reference to the U.S. public land survey system.

Compared with all record data and accepted as correct.

Robert H. Hinkel 18 JAN 84
Oneida County Surveyor date



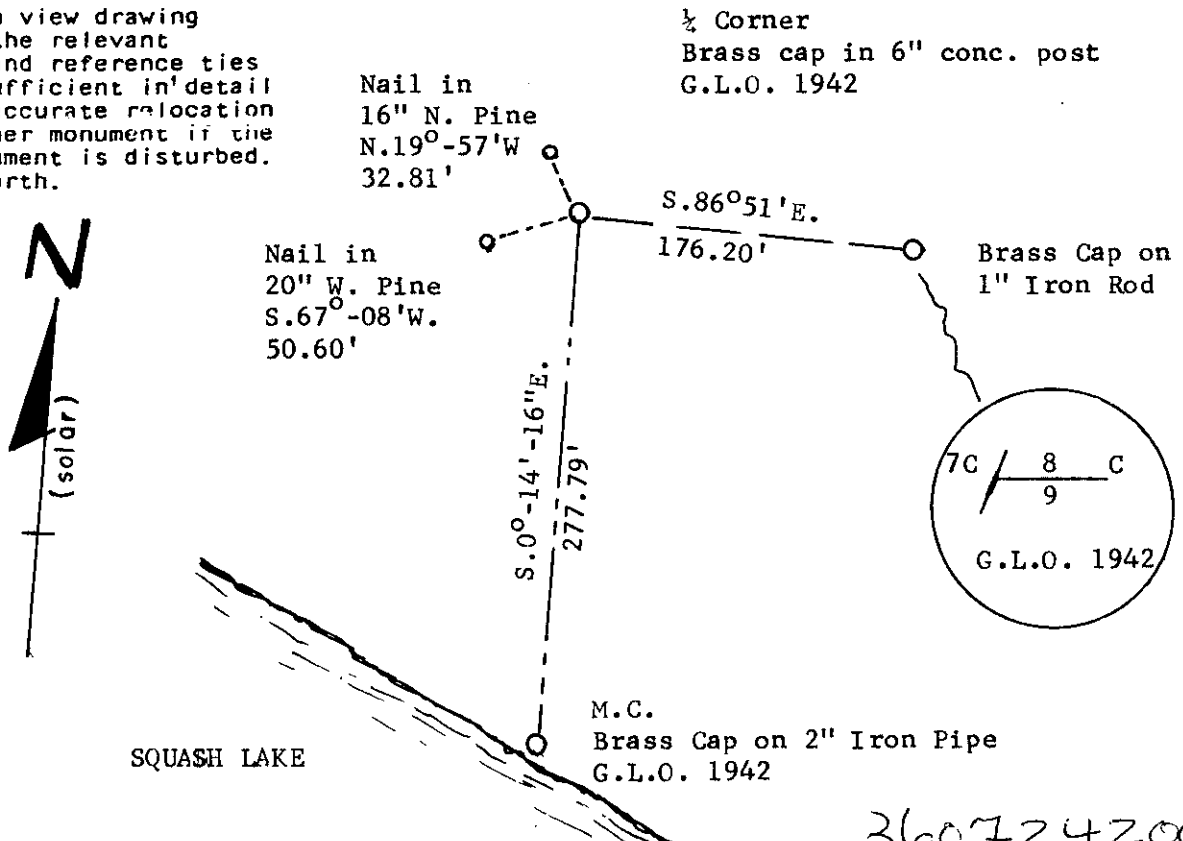
LOCATION SKETCH
Location of landmark indicated by "●")

- (b) Describe any record evidence, monument evidence, occupational evidence, testimonial evidence or any other material evidence you considered, and whether the monument was found or placed.

The original corner was set in 1860 by Alfred Millard. In 1942 the corner was reset in a resurvey of Section 19 by Hal D. Craig of the General Land Office. Craig found no evidence of the original corner and proportioned the distance. He set a brass cap in a 6" concrete post. This is the corner that has been used since and is included in the recorded plat "Oakwood Heights". It is still in very good condition.

- (c) In the plan view drawing below, provide reference ties to at least 4 witness monuments, or, if the location is within a municipality, to at least 2 witness monuments. (Witness monuments shall be made of concrete, natural stone, iron or other equally durable material, except wood.) Describe witness monuments.

- (d) Show a plan view drawing depicting the relevant monuments and reference ties which is sufficient in detail to enable accurate relocation of the corner monument if the corner monument is disturbed. Indicate north.



P-1

(e) Describe any material discrepancy between the location of the corner as restored or reestablished and the location of that corner as previously restored or reestablished by distance and direction. Show the discrepancy on the plan view drawing under (d), above. Show the distances between the corner as previously restored or reestablished and (1) the corner as restored or reestablished, and (2) to at least 2 of the witness monuments shown on the drawing in (d), above.

Found in place.

Checks as shown on the recorded plat "Oakwood Heights".

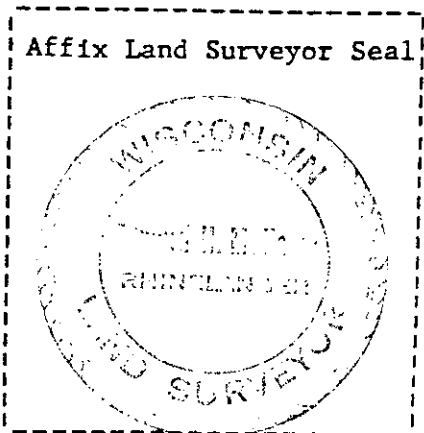
(f) Was the corner restored through acceptance of (1) an obliterated evidence location, or, (2) a found perpetuated location?

Found in place.

(g&h) Was the corner reestablished through lost corner proportionate methods? If so, show the method, including the directions and distances to other public land survey corners used as evidence or used for proportioning in determining the corner location?

No. N/A

REGISTER'S OFFICE }
Oneida County, Wis. }
Received for Record the 18th day of
January A.D. 1984 at
10:00 o'clock A M. and recorded in
Vol. _____ on page _____
Louis Verage Kuehn
Register



(i) I, Edward H. McNown
(type or print name) certify that the corner location shown
on this record was determined by me or under my direction and
control and that this U.S. Public Land Survey Monument Record is
correct and complete to the best of my knowledge and belief.

Edward H. McNown
Signature

Oct. 4, 1983
Date

5-760

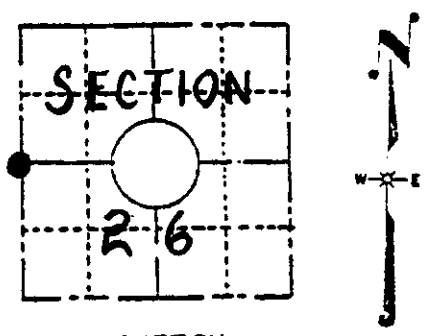
U. S. PUBLIC LAND SURVEY MONUMENT RECORD

INSTRUCTIONS: This record shall show the location of the corner and shall include all of the following nine elements (a through i).

(a) Identify the corner by reference to the U.S. public land survey system.

Compared with all record data and accepted as correct.

Robert H. Winal
 Oneida County Surveyor Date



The west one quarter of Section 26
 T 36N, R7E
 4th Principle Meridian

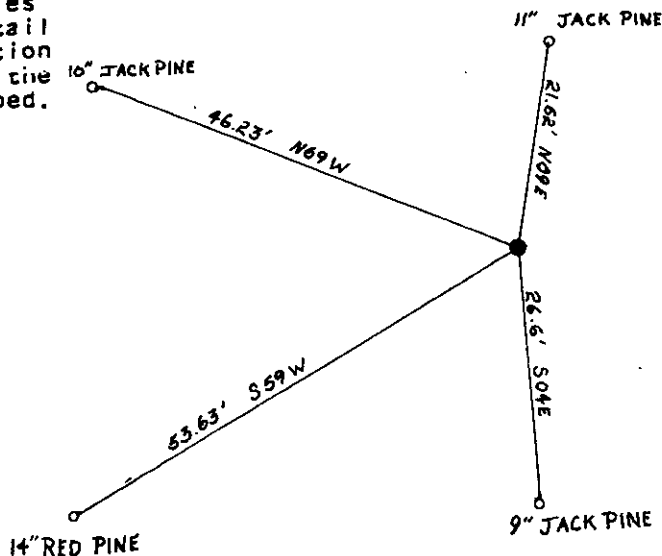
LOCATION SKETCH
 (Location of landmark indicated by "G")

(b) Describe any record evidence, monument evidence, occupational evidence, testimonial evidence or any other material evidence you considered, and whether the monument was found or placed.

Original corner was set by Jenkins in 1862. It was recovered by Vaughn in 1905. It was recovered by Maines in 1937. Maines set an official corner July 2, 1937. I recovered the official corner and remains of one bearing tree (9" Jack Pine S 01 E 28.86'). I set new bearing trees.

(c) In the plan view drawing below, provide reference ties to at least 4 witness monuments, or, if the location is within a municipality, to at least 2 witness monuments. (Witness monuments shall be made of concrete, natural stone, iron or other equally durable material, except wood.) Describe witness monuments.

(d) Show a plan view drawing depicting the relevant monuments and reference ties which is sufficient in detail to enable accurate relocation of the corner monument if the corner monument is disturbed. Indicate north.



7-17

(e) Describe any material discrepancy between the location of the corner as restored or reestablished and the location of that corner as previously restored or reestablished by distance and direction. Show the discrepancy on the plan view drawing under (d), above. Show the distances between the corner as previously restored or reestablished and (1) the corner as restored or reestablished, and (2) to at least 2 of the witness monuments shown on the drawing in (d), above.

(f) Was the corner restored through acceptance of (1) an obliterated evidence location, or, (2) a found perpetuated location?

The corner bearing trees were restored through of a found perpetuated location as described on the reverse side of this form.

(g&h) Was the corner reestablished through lost corner proportionate methods? If so, show the method, including the directions and distances to other public land survey corners used as evidence or used for proportioning in determining the corner location?

REGISTER'S OFFICE }
Oneida County, Wis. }

Received for Record the 18th day of
January A.D. 1984 at
10⁰⁰ o'clock A M. and recorded in
Vol. _____ on page _____
Louis Verage Kuehn
Register

(i) I, PAUL W. MARKWORTH
(type or print name) certify that the corner location shown
on this record was determined by me or under my direction and
control and that this U.S. Public Land Survey Monument Record
is correct and complete to the best of my knowledge and belief.

Paul W. Markworth
Signature

Date



U.S. PUBLIC LAND SURVEY MONUMENT RECORD

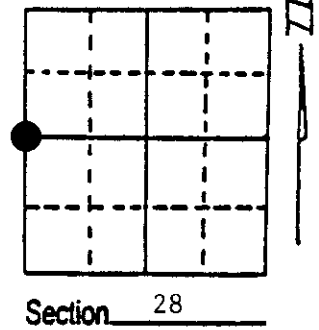
Note: This form is intended and designed to fulfill all requirements of Wisconsin Administrative Code, Chapter A-E 7.08 U.S. Public Land Survey Monument Record (3) (a) (b) (c) (d) (e) (f) (g) (h) (i). An additional sheet may be added if necessary to conform with said requirements.

(a) Corner location: Township 36 North

Range 7 East/West

Town/City/Village Woodboro

County Oneida



(b) (f) (g) (h) Description of monument found at this corner and if it was accepted, state all evidence (material, testimonial, occupational, plats, records, other monuments) used as a basis for accepting. If not accepted or if nothing was found, state evidence used as basis for establishing location. If reestablished through lost corner proportionate methods, indicate all monuments, distances and directions used to establish. Indicate type of monument found or set and sign post.

11/1862 - Joseph H. Jenkins established this corner, set a wood post and 2 BTs:
10" Aspen, N27°W, 86 Links 8" Aspen, N42°E, 60 Links

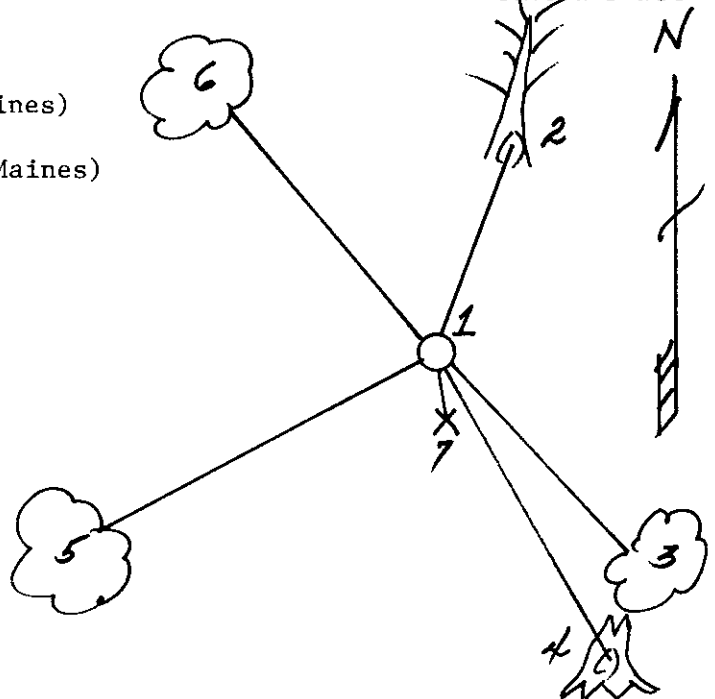
9/7/1937 - Maine restored corner by Lost Methods and set a 2" x 60" iron pipe with flat brass cap along with two BTs:
10" Jack Pine, N10°E, .562 Chains 14" White Pine Stump, S49°E, .476 Chains

2/23/1990 - Milo E. Stefan found Maine's monument in good condition with White Pine Stump and Jack Pine still here. Made new BTs and placed plastic sign post.

(c) (d) (e) Plan view of corner with ties to at least 4 witness monuments. If in disagreement with previously established corner, show the distances between the two corners and also indicate the ties to the disputed corner.

- 1) 2" x 60" Iron pipe with brass cap.
- 2) 12" Jack Pine (dead), N10°E, 37.1' (Maines)
- 3) 5" Red Maple, S49°E, 25.41'
- 4) 14" White Pine (stump), S39°E, 31.4' (Maines)
- 5) 5" Red Maple, S66°W, 69.62'
- 6) 8" Red Maple, N55°W, 48.02'
- 7) Plastic sign post, SE, 1.2'

Distances to nail in side of BTs.
BTs scribed "BT" in stump blaze.



(i) I, Milo E. Stefan
(type or print name) certify that the corner location on this record was determined by me or under my direction and control and that this U.S. Public Land Survey Monument Record is correct and complete to the best of my knowledge and belief.

Milo E. Stefan 2/26/90
Signature Date



3607292000
Stamp