

CERTIFIED LAND CORNER RESTORATION

Index No. ....

State of Wisconsin }  
County of Oneida } ss.

History of original corner establishment:

Original corner post established by Alfred Millard in September, 1860.

Original bearing trees:

Y. Pine 14" N80°E, 9 links (5.94 feet) Y. Pine 10" S20°W, 24 links (15.84 feet)  
Y. Pine 10" S32°E, 48 links (31.68 feet) Tamarack 12" N20°W, 10 links (6.60 feet)

I, Jerome N. Kraemer, do hereby certify that on the 10th day of May, 1978, I found evidence of the Southeast Section corner of Section 25 Township 36 North, Range 7 East, Fourth Principal Meridian, as described hereon; and that from this evidence I established a new monument and accessories as described hereon to perpetuate the original location of this corner.

Description of corner evidence found:

Found 4" square cedar post. Each side of post has corresponding section number scribed on it. Old barbed wire fence runs North and South from scribed wood post.

Resident witnesses:

None

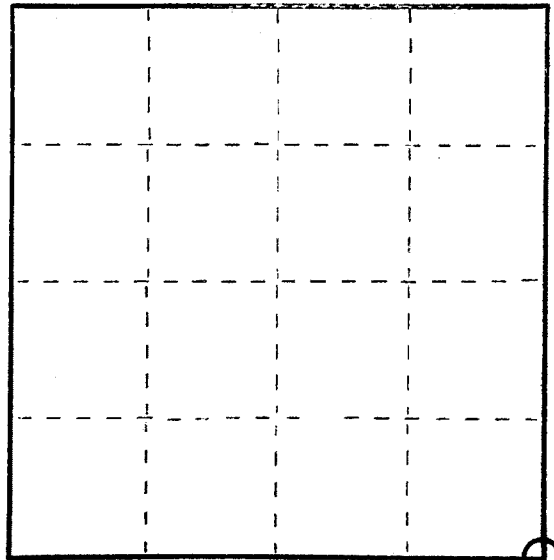
Description of monument and accessories I established to perpetuate the original location of this corner.

Set Oneida County Survey Marker (cast aluminum Berntsen Monument) 3-1/2" Cap, 2" inside diameter and 30" long to replace scribed post. Reset old post. Set new scribed cedar post. Made bearing trees.

Set P.K. nail in 8" Tamarack N9°W, 51.38 feet;  
Set P.K. nail in 12" Tamarack N87°E, 32.82 feet;  
Set P.K. nail in 5" Balsam, S53°E, 3.62 feet.

Scribed bearing trees.

Section 25, T36N, R7E



○ = Corner monument restored.

Dated at Minocqua, Wis., this 27th day of December, 1978

Signature Jerome N. Kraemer Title Registered Land Surveyor Registration No. 1448  
(County Surveyor, Registered Land Surveyor, or other duly authorized official)

Office of Register of Deeds, County of \_\_\_\_\_, I hereby certify that the within instrument was filed in this office for record on the \_\_\_\_\_ day of \_\_\_\_\_, 19\_\_\_\_ at \_\_\_\_\_ o'clock \_\_\_\_\_ M.

(Register of Deeds)

By \_\_\_\_\_ Deputy

FORM 803 N. C. W. L. P. CO., MILWAUKEE

# U.S. PUBLIC LAND SURVEY MONUMENT RECORD

ONEIDA COUNTY

JUN 22 2017

Note: This form is intended and designed to fulfill all requirements of the Wisconsin Administrative Code, Chapter A-E 7.08 U.S. Public Land Monument Record (3)(a)(b)(c)(d)(e)(f)(g)(h)(i). An additional sheet may be added if necessary to conform with said requirements.

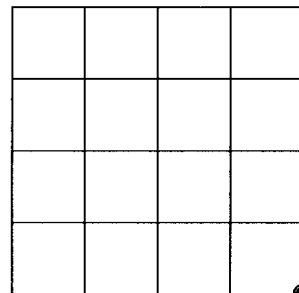
(a) CORNER LOCATION: **WISCORS - Oneida County**  
 Southeast Corner of Section 25  
 Township 36 North  
 Range 7 East  
 Town of Woodboro  
 County of Oneida

North: 140068.115 USft \*  
 East: 228978.615 USft \*  
 Latitude: 45° 34' 12.77862" N \*  
 Longitude: 89° 32' 54.35633" W \*  
 Datum: NAD 83(2011)  
 GNSS Method: Static - Direct  
 GNSS Control: WISCORS VRS  
 Record North: 140067.952 USft  
 Record East: 228978.654 USft  
 Record Datum: NAD 83(1991)

AT            O'CLOCK            M  
**KYLE J. FRANSON**  
 REGISTER OF DEEDS

(RECORDING AREA)

SECTION 25



(b) HISTORY OF ORIGINAL CORNER ESTABLISHMENT

Original Surveyor: Alfred Millard  
 Date of Survey: September, 1860

Original B.T.'S: Y. Pine 14" N 80°E, 9 lks. Y. Pine 10" S 32°E 48 lks.  
 Y. Pine 10" S 20°W 24 lks. Tamarack 12" N 20°W 10 lks.

(f)(g)(h) DESCRIPTION OF MONUMENT FOUND AT THIS CORNER AND IF IT WAS ACCEPTED, STATE ALL EVIDENCE (MATERIAL, TESTIMONIAL, OCCUPATIONAL, PLATS, RECORD, OTHER MONUMENTS) USED AS A BASIS FOR ESTABLISHING LOCATION. IF NOT ACCEPTED OR IF NOTHING WAS FOUND, STATE EVIDENCE USED AS BASIS FOR ESTABLISHING LOCATION. IF REESTABLISHED THROUGH LOST CORNER PROPORTIONATE METHODS, INDICATE ALL MONUMENTS, DISTANCES AND DIRECTIONS USED TO ESTABLISH. INDICATE TYPE OF MONUMENT AND SIGN POST FOUND OR SET.

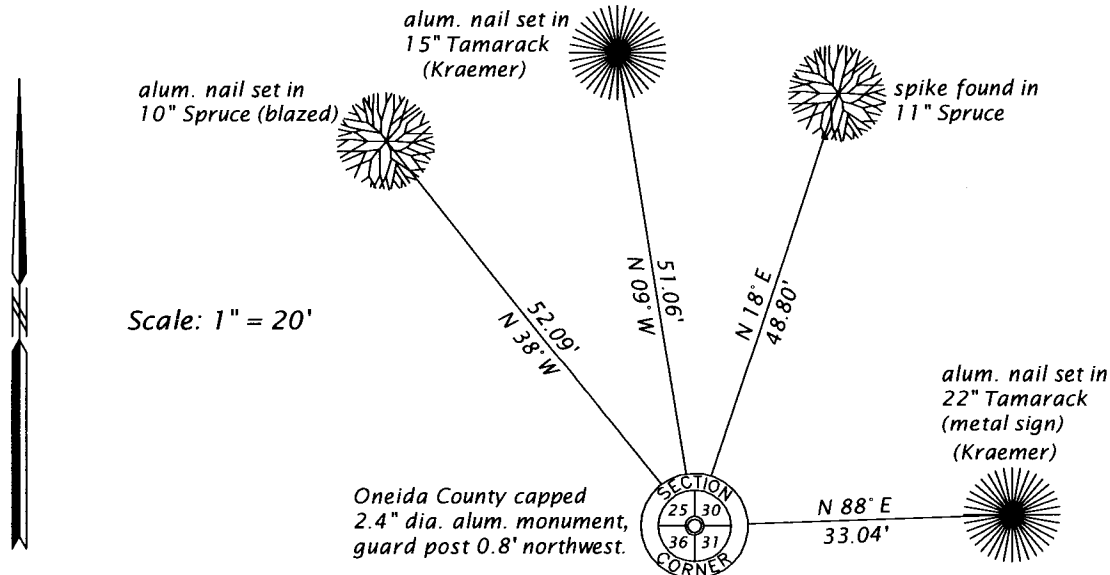
June 15, 1898 - B. F. Dorr, County Surveyor (Old Field Book 4A, page 46, also in Old Field Book 11, page 64; and Dorr-Vaughan Book, page 76, for a survey in Sections 28, 29, 31 & 32, T36N, R8E) notes indicate corner was used to reestablish the corner common to Sections 29-30-31 & 32.

August 10, 1940 - V. M. Maine, County Surveyor (Maine Book 1940A, page 142, for survey in Section 30, T36N, R8E) corner identified by old scribed stake & stps. of two Orig. B.T.'s: Y.P. 14" N80° E, 09 lks; Tam. 12" N20° W, 10 lks., set and new cedar post scribed it. Marked B.T.'s Tam 8" N37° W, 89-1/2 lks.; Cedar 10" N8° E, 50-7/10 lks.

(CONTINUED ON REVERSE PAGE)

The coordinate value shown has been verified by at least one of the following methods: 1) comparison to a previously GPS determined published value; 2) the value is the average of two or more GPS observations at a markedly different time; 3) one or more distances were measured back to the GPS observed corner from temporary GPS observed offset locations. \* Average of 3 RTK measurements in 5 minute time period.

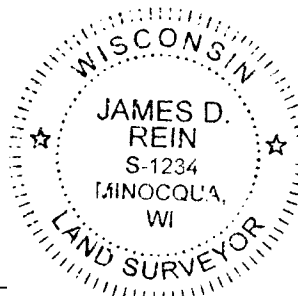
(c)(d)(e) PLAN VIEW OF CORNER WITH TIES TO AT LEAST 4 WITNESS MONUMENTS. IF IN DISAGREEMENT WITH PREVIOUSLY ESTABLISHED CORNER, SHOW THE DISTANCE BETWEEN THE TWO CORNERS AND ALSO INDICATE THE TIES TO THE DISPUTED CORNER.



(i) I, JAMES D. REIN, PROFESSIONAL LAND SURVEYOR NO. S-1234 HEREBY CERTIFY THAT THE CORNER LOCATION ON THIS RECORD WAS DETERMINED BY ME OR UNDER MY DIRECTION AND CONTROL AND THAT THIS U.S. PUBLIC LAND SURVEY MONUMENT RECORD IS CORRECT AND COMPLETE TO THE BEST OF MY KNOWLEDGE AND BELIEF.

*[Handwritten Signature]*  
 SIGNATURE

6-12-17  
 DATE



INDEX NO. V - 25  
 3607250000

(CONTINUED FROM REVERSE PAGE)

May 10, 1978 - Jerome N. Kraemer, RLS No. 1448, Wilderness Surveying, Inc. (field notes and Map No. 78-61 filed as C412 in county surveyor's office) found 4" x 4" sq. cedar post scribed all four section numbers and initial "M" on all four sides. Set Oneida County Survey Marker (cast aluminum Berntsen Monument) 3-1/2" cap, 2" inside dia. and 30" long to replace scribed post. Reset old post. Set new scribed cedar post and made new bearing trees with P.K. nails: 8" Tamarack N9° W, 51.38 feet; 12" Tamarack N87° E, 32.82 feet; and 5" Balsam S53°E, 3.62 feet (note: Kraemer did not have a copy of Maine's survey record).

April 4, 2017 - James D. Rein, PLS No. 1234, we recovered an Oneida County capped 2.4" dia. alum. monument, referenced by a wood post 1 foot west and bt a white poly guard post 0.8 feet northwest and both of Kraemer's Tamarack bearing trees. (note the cap is now stamped with correct identification and date 1991 and S-1682) I accept the monument as being a perpetuation of the original corner position and made reference ties as shown in the plan.