

CERTIFIED LAND CORNER RESTORATION

Index No.

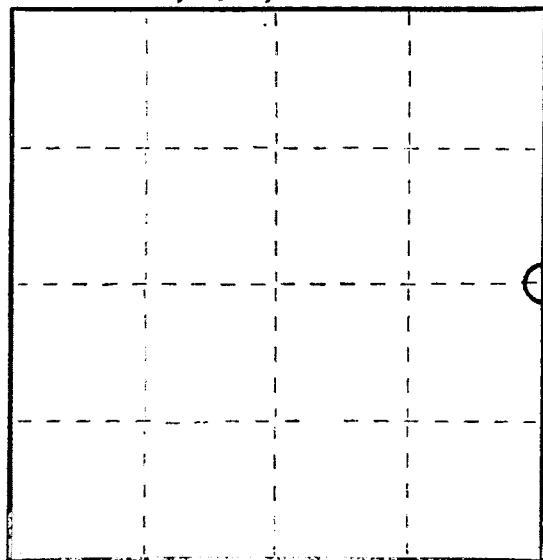
State of Wisconsin }
County of Oneida } ss.

I Jerome N. Kraemer, do hereby certify that on the 5th day of April, 19 78, I found evidence of the East one-quarter corner of Section 25 Township 36 North, Range 7 East, Fourth Principal Meridian, as described hereon; and that from this evidence I established a new monument and accessories as described hereon to perpetuate the original location of this corner.

Resident witnesses:

None

Section 25, T36N, R7E



○ = Corner monument restored.

History of original corner establishment:

Original corner post established by Alfred Millard in September, 1860.

Original Bearing Trees:

W. Pine 18", N45°W, 41 links (27.06 feet)

W. Pine 18", N59°E, 31 links (20.16 feet)

Description of corner evidence found:

Searched for corner at proportionate distance but no evidence was found.

Description of monument and accessories I established to perpetuate the original location of this corner.

Set Oneida County Survey Marker (Cast aluminum Berntsen Monument) 3-1/2" Cap, 2" inside diameter and 30" long. Set corner at proportionate measurement.

Set scribed cedar post.

Made bearing trees:

Set P.K. Nail in 5" Oak, N87°W, 24.72 feet,

Set P.K. Nail in 7" Poplar, N27°W, 61.45 feet,

Set P.K. Nail in 4" Poplar, N10°E, 37.12 feet.

Scribed bearing trees.

Dated at Minocqua, Wis., this 27th day of December, 19 78

Signature *Jerome N. Kraemer* Title Registered Land Surveyor Registration No. 1148
(County Surveyor, Registered Land Surveyor, or other duly authorized official)

Office of Register of Deeds, County of _____, I hereby certify that the within instrument was filed in this office for record on the _____ day of _____, 19 _____ at _____ o'clock _____ M.

(Register of Deeds)

By _____ Deputy

FORM 985 R. C. MILLER CO., MILWAUKEE

U.S. PUBLIC LAND SURVEY MONUMENT RECORD

REGISTER OF DEEDS OFFICE
ONEIDA COUNTY
FILED

Note: This form is intended and designed to fulfill all requirements of the Wisconsin Administrative Code, Chapter A-E 7.08 U.S. Public Land Monument Record (3)(a)(b)(c)(d)(e)(f)(g)(h)(i). An additional sheet may be added if necessary to conform with said requirements.

JUN 22 2017

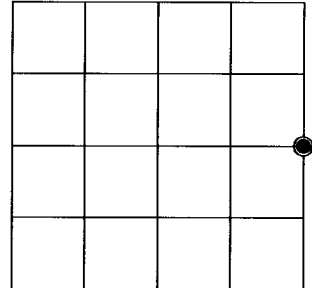
(a) CORNER LOCATION:
East Quarter Corner of Section 25
Township 36 North
Range 7 East
Town of Woodboro
County of Oneida

WISCORS - Oneida County
North: * USft *Both RTK and Static GPS/GNSS observations for this corner were not resolved to acceptable coordinates because of dense forest canopy.
East: * USft
Latitude:
Longitude:
Datum: NAD 83(2011)
GNSS Method: Static - Direct
GNSS Control: WISCORS VRS
Record North: 142707.087 USft
Record East: 228992.846 USft
Record Datum: NAD 83(1991)

AT _____ O'CLOCK
KYLE J. FRANSON
REGISTER OF DEEDS

(RECORDING AREA)

SECTION 25



(b) HISTORY OF ORIGINAL CORNER ESTABLISHMENT

Original Surveyor: Alfred Millard
Date of Survey: September, 1860

Original B.T.'S: W. Pine 18" N 45°W, 41 lks.
W. Pine 18" N 59°E 31 lks.

(f)(g)(h) DESCRIPTION OF MONUMENT FOUND AT THIS CORNER AND IF IT WAS ACCEPTED, STATE ALL EVIDENCE (MATERIAL, TESTIMONIAL, OCCUPATIONAL, PLATS, RECORD, OTHER MONUMENTS) USED AS A BASIS FOR ESTABLISHING LOCATION. IF NOT ACCEPTED OR IF NOTHING WAS FOUND, STATE EVIDENCE USED AS BASIS FOR ESTABLISHING LOCATION. IF REESTABLISHED THROUGH LOST CORNER PROPORTIONATE METHODS, INDICATE ALL MONUMENTS, DISTANCES AND DIRECTIONS USED TO ESTABLISH. INDICATE TYPE OF MONUMENT AND SIGN POST FOUND OR SET.

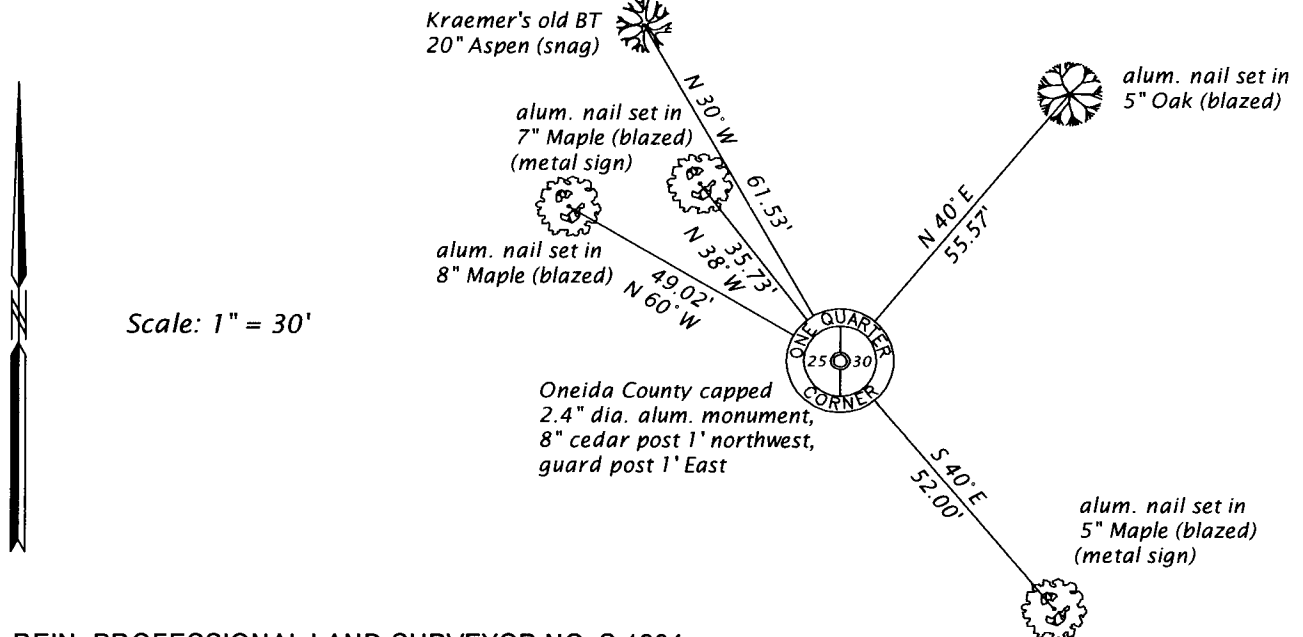
January 23, 1891 - B. F. Dorr, County Surveyor (Old Field Book 11, page 99, also in Old Field Book 22, page : and Dorr-Vaughan Book, page 50, for a survey in Section 25, T36N, R7E) recovered the corner.

September 11, 1978 - Jerome N. Kraemer, RLS No. 1448, Wilderness Surveying, Inc. (field notes and Map No. 78-61, filed as C412 in county surveyor's office) was unable to find any evidence of the original corner position and reestablished it by single proportionate measurement between the section corners. He set an Oneida County Survey Marker (cast aluminum Berntsen Monument) 3-1/2" Cap, 2" inside diameter and 30" long and set a scribed cedar post and made bearing trees with P.K. nails: 5" Oak, N87°W, 24.72 feet; 7" Poplar, N27°W, 61.45 feet; and 4" Poplar, N10°E, 34.12 feet.

April 4, 2017 - James D. Rein, PLS No. 1234, we recovered an Oneida County, unmarked, capped aluminum monument, referenced by an 8" cedar post and Kraemer's northwest Aspen bearing tree. I accept this aluminum monument as a good faith reestablishment of the lost corner by single proportionate measurement, and we made reference ties as shown in the plan.

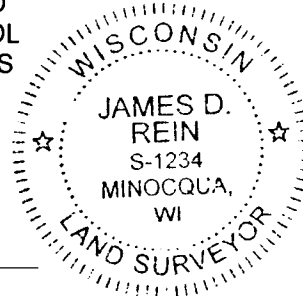
~~The coordinate value shown has been verified by at least one of the following methods: 1) comparison to a previously GPS determined published value; 2) the value is the average of two or more GPS observations at a markedly different time; 3) one or more distances were measured back to the GPS observed corner from temporary GPS observed offset locations.~~

(c)(d)(e) PLAN VIEW OF CORNER WITH TIES TO AT LEAST 4 WITNESS MONUMENTS. IF IN DISAGREEMENT WITH PREVIOUSLY ESTABLISHED CORNER, SHOW THE DISTANCE BETWEEN THE TWO CORNERS AND ALSO INDICATE THE TIES TO THE DISPUTED CORNER.



Scale: 1" = 30'

(i) I, JAMES D. REIN, PROFESSIONAL LAND SURVEYOR NO. S-1234 HEREBY CERTIFY THAT THE CORNER LOCATION ON THIS RECORD WAS DETERMINED BY ME OR UNDER MY DIRECTION AND CONTROL AND THAT THIS U.S. PUBLIC LAND SURVEY MONUMENT RECORD IS CORRECT AND COMPLETE TO THE BEST OF MY KNOWLEDGE AND



James D. Rein
SIGNATURE
6-12-17
DATE

INDEX NO. T-25
3607252000