

# U.S. PUBLIC LAND SURVEY MONUMENT RECORD

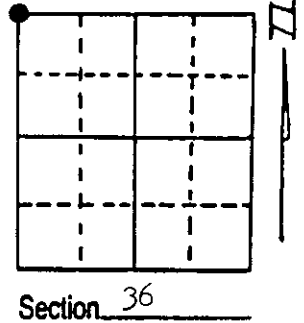
Note: This form is intended and designed to fulfill all requirements of Wisconsin Administrative Code, Chapter A-E 7.08 U.S. Public Land Survey Monument Record (3) (a) (b) (c) (d) (e) (f) (g) (h) (i). An additional sheet may be added if necessary to conform with said requirements.

(a) Corner location: Township 36 North  
 Range 7 East/West

Town/City/Village WOODBORO

County ONEIDA

REGISTER OF DEEDS OFFICE  
 ONEIDA COUNTY, WIS  
**FILED**  
 DEC 12 1990  
 At \_\_\_\_\_ O'Clock \_\_\_\_\_ M  
**THOMAS H. LEIGHTON**  
 REGISTER OF DEEDS

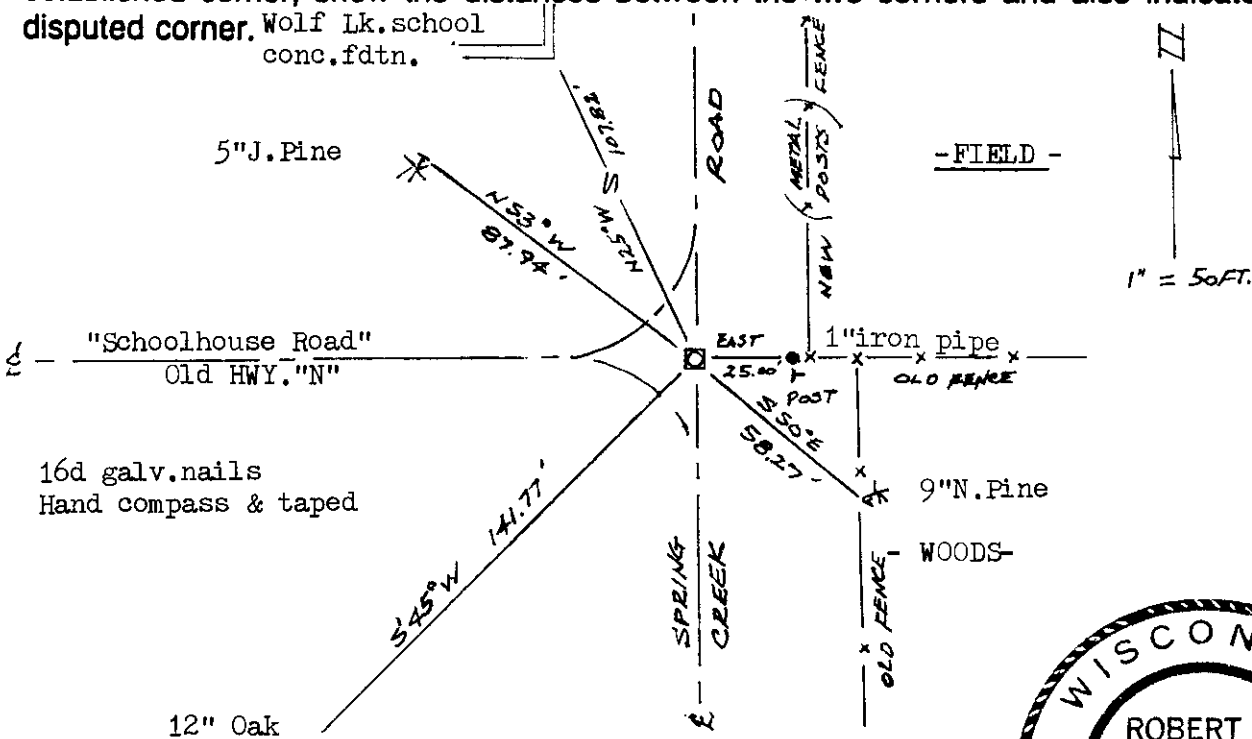


(b) (f) (g) (h) Description of monument found at this corner and if it was accepted, state all evidence (material, testimonial, occupational, plats, records, other monuments) used as a basis for accepting. If not accepted or if nothing was found, state evidence used as basis for establishing location. If reestablished through lost corner proportionate methods, indicate all monuments, distances and directions used to establish. Indicate type of monument found or set and sign post.

1862 Joseph J. Jenkins, Deputy Surveyor, North betwn. Sec., s 35&36, Var. 5°E, ..... 80.00ch. set post...BT's Y.pine N76°W, 34lks., W.pine 15", N80°W, 13lks., W.pine 10", S23°E, 20lks., W.pine 12", S15°W, 29lks....timber pine and all dead. B.F.Dorr, OCS, @ corner in Oct. 1891; D.H.Vaughan, OCS, @ corner for road west & north in 1902...set new post; L.Schmit, rls, reset corner in 1978 survey in Section 26...set P.K.nail & 2"iron pipe @ road ixion; W.G.Immich, RLS, used P.K. in survey of Section 36 in 1978.

12 Oct. '90 found 2" iron pipe, replaced with W-1-B OCS alum. mont., "T" plastic post set 25' E. made BT's & ties as below. Corner by common report using the fence, East & road ixions. N, S&W.

(c) (d) (e) Plan view of corner with ties to at least 4 witness monuments. If in disagreement with previously established corner, show the distances between the two corners and also indicate the ties to the disputed corner.



(i) I, ROBERT H. WINAT, RLS-1040  
 (type or print name) certify that the corner location on this record was determined by me or under my direction and control and that this U.S. Public Land Survey Monument Record is correct and complete to the best of my knowledge and belief.



Index No. 1-21

Signature

*Robert H. Winat*

Date 12 Oct. '90

Stamp

3607260000