

This form is intended to fulfill the requirements of Chapter A-E 7.08 (3)(a) thru (i) U.S. Public Land Survey Monument Location Record, Wisconsin Administrative Code. Use the reverse side of form for continuation.

U.S. PUBLIC LAND SURVEY MONUMENT LOCATION RECORD

Recorders Data

USPLS CORNER: NORTH 1/4 SECTION: 35 TOWNSHIP: 36 NORTH RANGE: 7 EAST

NAME OF WATERWAY FOR M.C. CORNER : N/A SECTION LINE: N/A

(CITY)(VILLAGE)(TOWN) OF: WOODBORO COUNTY OF: ONEIDA

Description of monument found or placed and all other evidence used as the basis for monument location; including monuments and related measurements required if the corner location was reestablished by lost corner proportionate methods. Also indicate name of original surveyor, original survey date and the corner monument, bearing trees, witness or other reference monuments established; including measured bearing and distance ties, from available records.

Reestablished and referenced this corner location in existing blacktop roadway pavement per traverse retracement represented upon the reverse side of this location record due to disturbance by previous roadway construction; I set a 1/4" dia. by 2.5" long PK nail, with head broken off, as corner location 1.0' South of North edge of existing pavement.

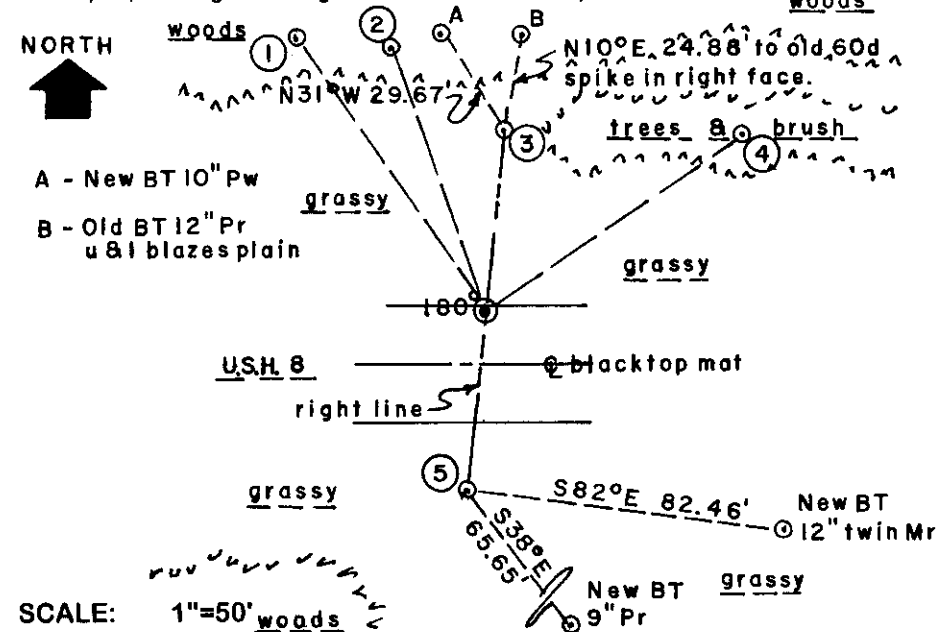
In November 1862, Joseph Jenkins/GLO set a wood post as the original corner and marked OBTs: a 6" Maple S17°W 15 links and a 10" Pw N55°W 48 links, which are all now obliterated.

In April 1986, David McMullen/RLS 1340, per plat of survey filed as A-334 in Oneida County survey records, noted a RR spike in North lane of highway pavement at this corner, now gone, and a standard cast aluminum Oneida County cap reference monument N01°32'37"E 46.94' which I found badly disturbed in pieces at and below existing grade and reset a standard 2" dia. by 30" long aluminum pipe monument with stamped Oneida County cap 5" above grade and directly above the center of the undisturbed base of former cast aluminum monument I found below grade; I also set a standard white poly 'T' marker post 6" South of both standard Oneida County aluminum witness monuments noted below.

Also see plat of survey by Russell Brown/RLS 2148 in April 1994 filed as C-1052 in Oneida County survey records and plat of survey by Lester Schmit/RLS 1192 in March 1995 filed as C-1222 in Oneida County survey records, neither of which provide positive identification or references for this corner location.

This recovery completed November 22, 1999 and witnessed by assistant Kevin McCullough of Foltz & Associates, Inc.

Plan view map of monument location with bearing and distance ties to a minimum of four(4) described witness or reference monuments of concrete, natural stone, iron, live bearing trees or equivalent material. If applicable, also show a minimum of two(2) bearing and distance ties to any other monument found and not accepted; including the bearing and distance from the accepted monument.



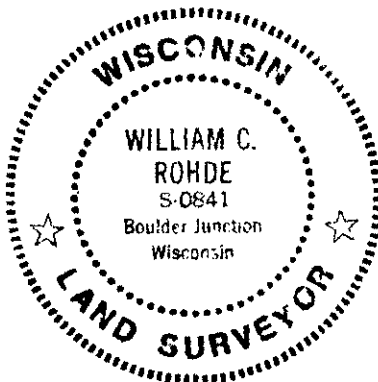
WITNESS MONUMENT TIES:

- ① New BT 12" Pw N35°W 86.62'.
- ② Old BT 10" Pw with upper & lower face blazes plain N20°W 73.22'.
- ③ Standard 2" dia. by 30" long aluminum pipe monument set with stamped Oneida County cap 5" above grade N06°E 47.38'.
- ④ New BT South 10" Or of twin Or N55°E 80.53' to PK nail/washer in left face.
- ⑤ Standard 2" dia. by 30" long aluminum pipe monument set with stamped Oneida County cap at grade S06°W 47.38'.

SCALE: 1"=50'

Unless otherwise indicated, all bearing tree ties are to a .25" dia. by 2.5" long PK nail with a 1.25" dia. steel washer driven into unblazed right face and a .25" dia. by 2.5" long PK nail with a 2" dia. steel washer stamped BT is also driven into unblazed face of bearing tree at DBH; the basis for measured bearings is by compass to nearest degree and all tie distances are measured horizontal by steel tape corrected to nearest 1/100th feet at standard temperature of 68° F.

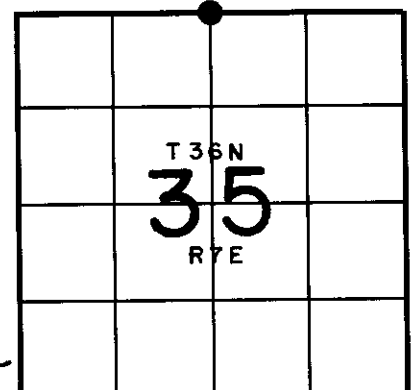
RLS SEAL:



LAND SURVEYOR CERTIFICATE:

I, William C. Rohde, hereby certify that I am duly licensed as a Professional Land Surveyor in the State of Wisconsin; that this USPLS monument location was determined by me and/or under my direct supervision and control; and that this U.S. Public Land Survey Monument Location Record is true and correct to the best of my knowledge and belief.

Signed *William C. Rohde*
William C. Rohde RLS 841

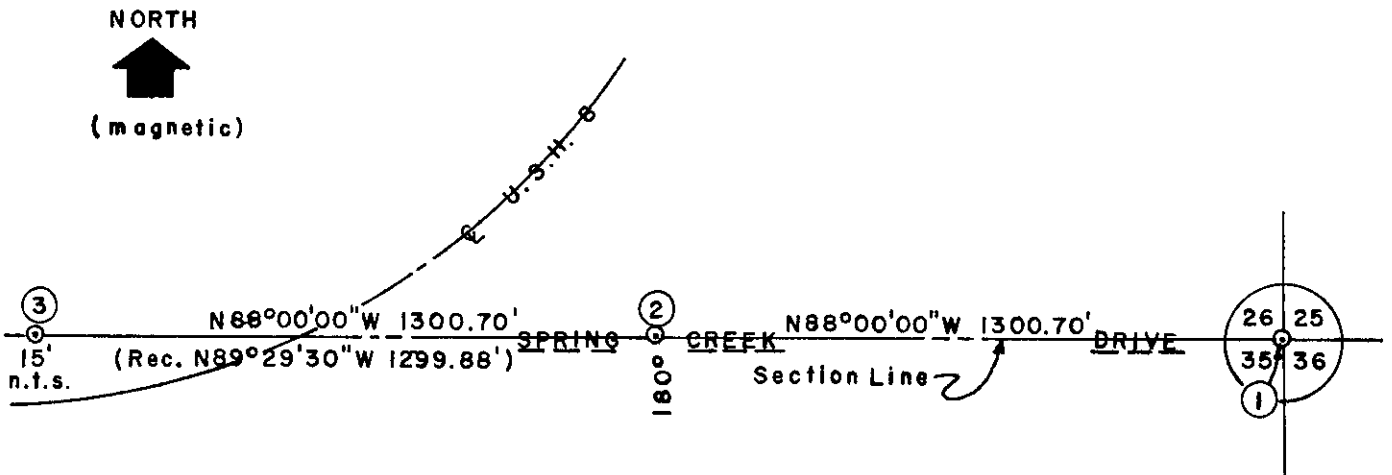


SECTION LOCATION MAP
INDEX NO. V 19



Stock No. 26273

REGISTER OF DEEDS OFFICE
ONEIDA COUNTY, WIS.
FILED
APR 11 2000
At _____ O'Clock _____ M
THOMAS H. LEIGHTON
REGISTER OF DEEDS



NORTH
↑
(magnetic)

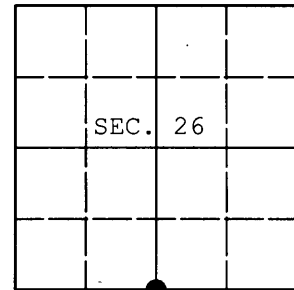
- ① - PK nail found in blacktop pavement at section corner location per record ties.
- ② - Old RR spike found in blacktop pavement at forty corner per 1986 plat of survey A-334 in Oneida County records.
- ③ - Quarter corner reestablished by doubling measured distance from ① to ② on a right line extension by total station traverse.

SCALE: 1" = 400'

U.S. PUBLIC LAND SURVEY MONUMENT RECORD

Note: This form is intended and designed to fulfill all requirements of Wisconsin Administrative Code, Chapter A-E 7.08 U.S. Public Land Survey Monument Record (3) (a) (b) (c) (d) (e) (f) (g) (h) (i). An additional sheet may be added if necessary to conform with said requirements.

(a) CORNER LOCATION: WISCRS (Oneida County)
1/4 Cor. of Secs. 26 & 35 N: 140,069.950 USft
Township 36 North E: 221,002.609 USft
Range 7 East of the 4th P.M. Datum: NAD 1983(2011)
Town of Woodboro County of Oneida



(b) HISTORY OF ORIGINAL CORNER ESTABLISHMENT

Original Surveyor: Original Accessories:
Date of Survey:

(b) (f) (g) (h) Description of monument found at this corner and if it was accepted, state all evidence (material, testimonial, occupational, plats, records, other monuments) used as a basis for accepting. If not accepted or if nothing was found, state evidence used as basis for establishing location. If re-established through lost corner proportionate methods, indicate all monuments, distances and directions used to establish. Indicate type of monument and sign post found or set.

NOTE: This is a perpetuation of a previous USPLS Monument Record by William C. Rohde, RLS dated March 21, 2000 and filed in the office of the Oneida County Register of Deeds. A complete history of the corner can be found on the previous monument record. I accept the previous location as a true and faithful perpetuation or reestablishment of the original corner location and further perpetuate it as follows.

November 1, 2013: I found and accepted Rohde's monument, a PK nail in the pavement of U.S. Highway 8. Rohde's accessories were found in substantial agreement with his previous record and were not remeasured as the sole purpose of this work is to report the coordinates of the corner point.

The coordinates shown were derived from a direct RTN GPS observation referenced to the WISCRS network.

(c) (d) (e) Plan view of corner with ties to at least 4 witness monuments. If in disagreement with previously established corner, show the distances between the two corners and also indicate the ties to the disputed.

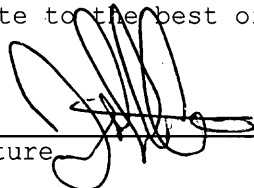
REGISTER OF DEEDS OFFICE
ONEIDA COUNTY
FILED

DEC 23 2013

AT _____ O'CLOCK _____ M
KYLE J. FRANSON
REGISTER OF DEEDS



(i) I, Jeffrey W. Austin, Registered Land Surveyor No. S-1885, hereby certify that the corner location on this record was determined by me or under my direction and control and that this U.S. Public Land Survey Monument Record is correct and complete to the best of my knowledge and belief.

Signature 

DEC-9, 2013
Date

U.S. PUBLIC LAND SURVEY MONUMENT RECORD

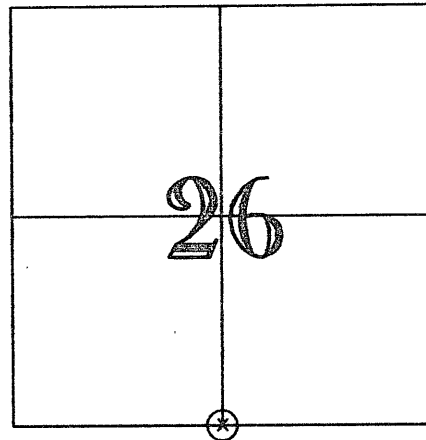
INDEX NO V-19

TYPE OF MONUMENT SURVEY MARKER NAIL

SECTION 26, T36N-R7E
 COORDINATE SYSTEM WCCS ONEIDA CO.

COORDINATES N 140,069.95 E 221,002.61 E

CORNER SET BY DENNIS J. CHRISTIE
 PROFESSIONAL LAND SURVEYOR S-1452
 TNT Professional Land Surveyors
 2154 Early St., Green Bay, WI 54304



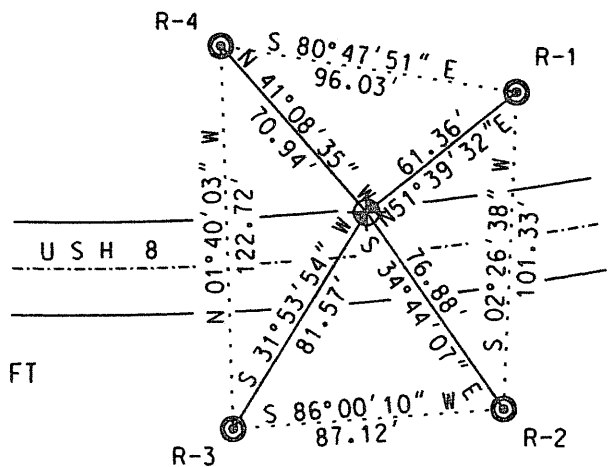
LOCATION SKETCH

ONEIDA COUNTY COORDINATES

R-1	140,108.01 N	221,050.74 E
R-2	140,006.77 N	221,046.41 E
R-3	140,000.70 N	220,959.51 E
R-4	140,123.37 N	220,955.94 E



SCALE: 1 IN = 50 FT



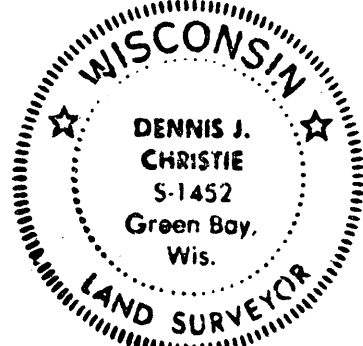
- BERNTSEN SURVEY NAIL
- WisDOT REFERENCE MONUMENT

THIS CORNER WAS TIED USING A TOTAL STATION BEFORE THE WisDOT RESURFACING PROJECT BY NORTHEAST ASPHALT, INC. AFTER THE WisDOT PROJECT FINISHED RESURFACING USH 8. I SET A SURVEY MARKER NAIL AT THE PREVIOUSLY TIED DOWN SECTION CORNER AND SET FOUR NEW TIES AS SHOWN ON THIS SHEET.

SURVEYOR'S AFFIDAVIT

I HEREBY CERTIFY THAT THIS MONUMENT CONFORMS TO THE ORIGINAL GOVERNMENT SURVEYS AND THAT THIS MONUMENT RECORD IS INTENDED TO UPDATE THE MONUMENT RECORDS FILED BY WILLIAM C. ROHDE (RLS 841), DATED MARCH 21, 2000 AND JEFFREY W. AUSTIN (RLS 1885), DATED DECEMBER 9, 2013.

Dennis J. Christie 11/17/15
 DENNIS J. CHRISTIE, PLS 1451 REGISTER OF DEEDS OFFICE
 ONEIDA COUNTY
 FILED



3607260020

MAP # L-0000

DATE FILED DEC 01 2015

BY Dennis J. Christie

DESCRIPTION FILED SURVEY MONUMENT RECORD

ONEIDA CO. SURVEYOR'S OFFICE

DEC 01 2015

AT 11 O'CLOCK M
 KYLE J. FRANSON
 REGISTER OF DEEDS

V-19