

This form is intended to fulfill the requirements of Chapter A-E 7.08 (3)(a) thru (i) U.S. Public Land Survey Monument Location Record, Wisconsin Administrative Code. Use the reverse side of form for continuation.

U.S. PUBLIC LAND SURVEY MONUMENT LOCATION RECORD

Recorders Data

USPLS CORNER: WEST 1/4 SECTION: 25 TOWNSHIP: 36 NORTH RANGE: 7 EAST

NAME OF WATERWAY FOR M.C. CORNER: N/A SECTION LINE: N/A

(CITY)(VILLAGE)(TOWN) OF: WOODBORO COUNTY OF: ONEIDA

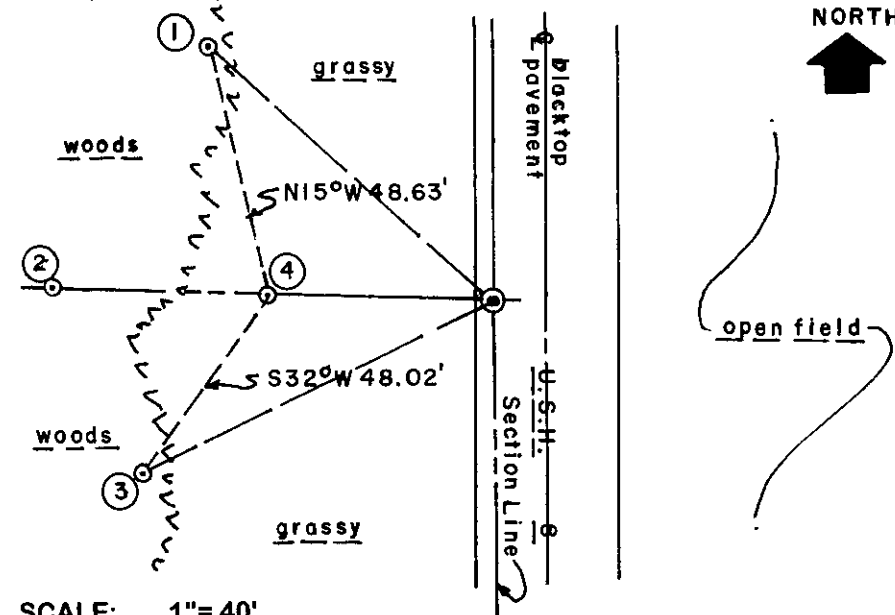
Description of monument found or placed and all other evidence used as the basis for monument location; including monuments and related measurements required if the corner location was reestablished by lost corner proportionate methods. Also indicate name of original surveyor, original survey date and the corner monument, bearing trees, witness or other reference monuments established; including measured bearing and distance ties, from available records.

After traversing from SW to NW section corners and then comparing positional data with previous record surveys, I found an old PK nail 4.1' East of west edge of existing blacktop pavement mat, but did not accept as it should be 0.22' further East to fit the record tie distance of 87.22', previously noted by Lester Schmit/RLS 1192, to an old undisturbed 1.25" dia. iron pipe record witness monument found west of the corner location, so I reset the corner location at the latter distance with a 1/4" dia. by 2.5" long PK nail in pavement on a right line from the record witness monument thru the old PK nail found; as a result, the clockwise angle measured from the NW to the SW section corners compared within 1 arc second of the angle computed from my traverse and previously measured by a Wilderness Surveying, Inc. traverse in 1978, per plat of survey by Jerome Kramer, RLS 1448, filed as C-412 in Oneida County records, when he had found a 2" iron pipe monument at the corner, also previously noted by Lester Schmit and which was obviously since destroyed by highway widening construction. A comparison of distances that were measured and/or computed by my traverse and the 1978 record traverse from this corner location to the NW and SW section corners are also considered at an acceptable tolerance in accord with current practices and statutes per the traverse data upon the reverse side of this location record. I set a standard white poly 'T' marker post 6" West of Witness Monument 2 below.

In November 1862, Joseph H. Jenkins/GLO set a wood post as the original corner and marked OBTs: a 16" Py N70°W 18 links and an 8" Py S55°E 10 links, all of which are now obliterated within roadway area.

This recovery completed November 22, 1999; there were no direct witnesses other than by many vehicle drive-bys.

Plan view map of monument location with bearing and distance ties to a minimum of four(4) described witness or reference monuments of concrete, natural stone, iron, live bearing trees or equivalent material. If applicable, also show a minimum of two(2) bearing and distance ties to any other monument found and not accepted; including the bearing and distance from the accepted monument.



WITNESS MONUMENT TIES:

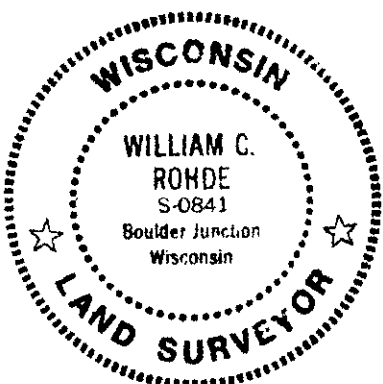
- ① 5/8" dia. by 36" long rebar set with standard yellow poly Reference Mark cap flush N48°W 79.10'.
- ② Old record 1.25" dia. iron pipe monument found OK and I set a std yellow poly Reference Mark cap in top flush N88°W 87.22'.
- ③ Same as ① S64°W 81.52'.
- ④ 1" dia. by 24" long iron pipe set with standard yellow poly Reference Mark cap flush N88°W 47.22'.

Witness monuments ② and ④ are set on a right transit line to the new PK at corner in roadway pavement.

SCALE: 1" = 40'

Unless otherwise indicated, all bearing tree ties are to a .25" dia. by 2.5" long PK nail with a 1.25" dia. steel washer driven into unblazed right face and a .25" dia. by 2.5" long PK nail with a 2" dia. steel washer stamped BT is also driven into unblazed face of bearing tree at DBH; the basis for measured bearings is by compass to nearest degree and all tie distances are measured horizontal by steel tape corrected to nearest 1/100th feet at standard temperature of 68° F.

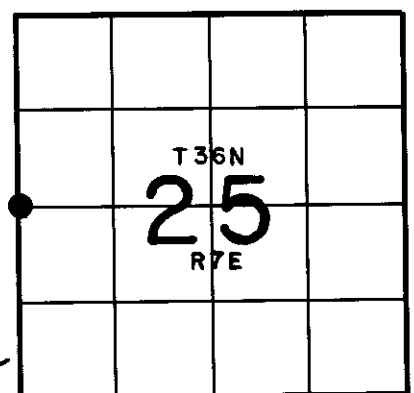
RLS SEAL:



LAND SURVEYOR CERTIFICATE:

I, William C. Rohde, hereby certify that I am duly licensed as a Professional Land Surveyor in the State of Wisconsin; that this USPLS monument location was determined by me and/or under my direct supervision and control; and that this U.S. Public Land Survey Monument Location Record is true and correct to the best of my knowledge and belief.

Signed: *William C. Rohde*
William C. Rohde RLS 841



SECTION LOCATION MAP

INDEX NO. T 21

3607262000



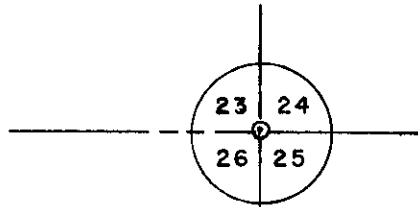
Stock No. 26273

REGISTER OF DEEDS OFFICE
ONEIDA COUNTY, WIS.

FILED

APR 11 2000

At _____ O'Clock _____ M
THOMAS H. LEIGHTON
REGISTER OF DEEDS



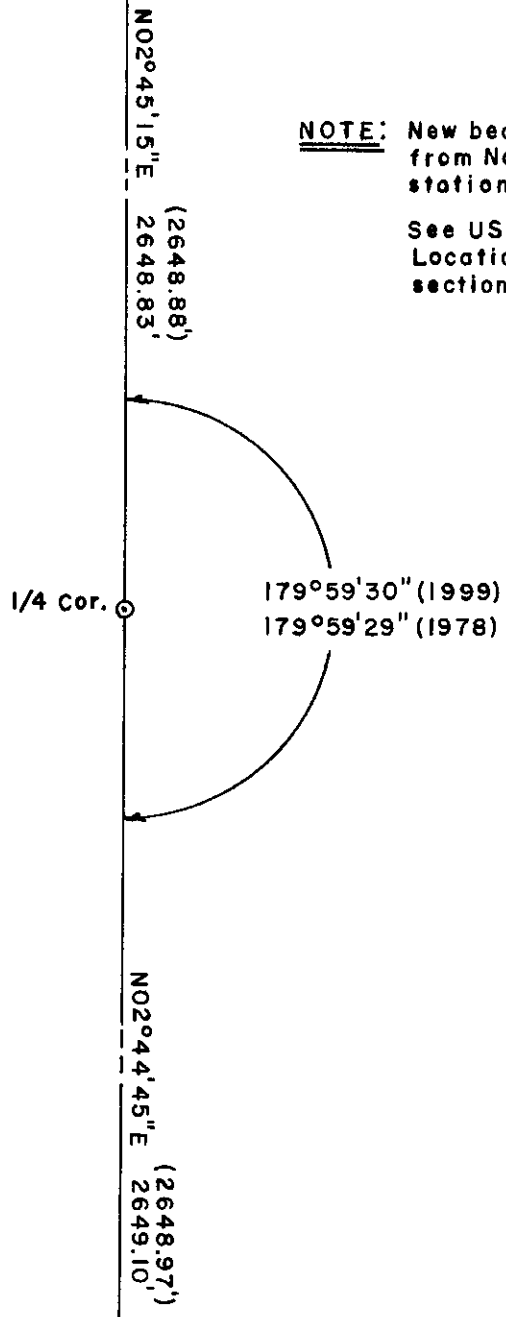
NORTH

 (magnetic)

SCALE: 1" = 500'

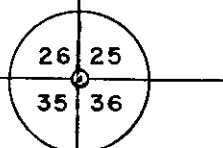
NOTE: New bearings and distances from November 1999 total station traverse.

See USPLS Monument Location records for both section corners.



Section Lines

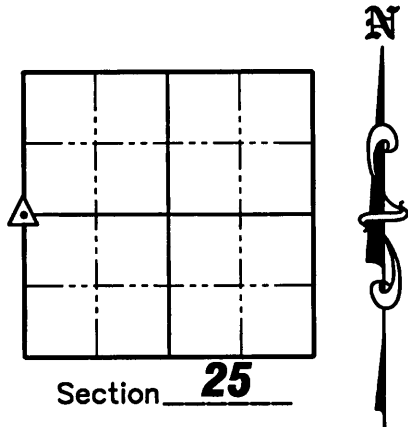
N88°00'00"W



U.S. PUBLIC LAND SURVEY MONUMENT RECORD

NOTE: This form is intended and designed to fulfill all requirements of Wisconsin Administrative Code, Chapter A-E 7 .08 U.S. Public Land Survey Monument Record (3)(a)(b)(c)(d)(e)(f)(g)(h)(i). An additional sheet may be added if necessary to conform with said requirements.

(a) Corner location: Township 36 North
 Range 7 East
 Town of Woodboro
 County of Oneida



(b)(f)(g)(h) Description of monument found at this corner and if it was accepted, state all evidence (material, testimonial, occupation, plats, records, other monuments) used as a basis for accepting. If not accepted or if nothing was found, state evidence used as a basis for establishing location. If reestablished through lost corner proportionate methods, indicate all monuments, distances and directions used to establish. Indicate type of monument found or set and sign post.

November, 1862 – Joseph H. Jenkins/GLO set a wood post as the original corner and marked BT's: 16" Yellow Pine, N70°W, 18 links; 8" Yellow Pine, S55°E, 10 links, which are now obliterated within roadway.


November 22, 1999 – William C. Rohde – After traversing from SW to NW section corners and then comparing positional data with previous record surveys, I found an old PK nail 4.1' East of west edge of existing blacktop pavement mat, but did not accept as it should be 0.22' further East to fit the record tie distance of 87.22', previously noted by Lester Schmit/RLS 1192, to an old undisturbed 1.25" dia. iron pipe record witness monument found West of the corner location, so I reset the corner location at the latter distance with a 1/4" dia. by 2.5" long PK nail in pavement on a right line from the record witness monument through the old PK nail found; as a result, the clockwise angle measured from the NW to the SW section corners compared within 1 arc second of the angle computed from my traverse and previously measured by a Wilderness Surveying, Inc. traverse in 1978, per Plat of Survey by Jerome Kramer, RLS 1448, filed as C-412 in Oneida County Records, when he had found a 2" iron pipe monument at the corner, also previously noted by Lester Schmit and which was obviously since destroyed by highway widening construction. A comparison of distances that were measured and/or computed by my traverse and the 1978 record traverse from the corner location the the NW and SW section corners are also considered at an acceptable tolerance in accordance with current practices and statutes. He set 3 new witness monuments.

July 22, 2008 – Jonathan W. Dulin found all four of William Rohde's witness monuments, but the P.K. nail was missing, due to Highway "8" being repaved a couple of years ago. I reset a survey nail using the four witness monuments 4.5' East of the West edge of the existing blacktop road and witnessed the corner as shown on sheet 2 hereof.

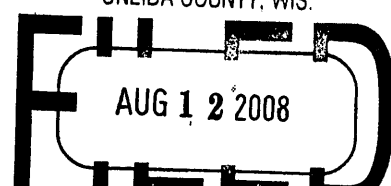
(c)(d)(e) Plan view of corner with ties to at least 4 witness monuments. If in disagreement with previously established corner, show the distances between the two corners and also indicate the ties to the disputed corner.

See Sheet 2 hereof

(i) I, Jonathan W. Dulin, certify that the corner location on this record was determined by me under my direction and control and that this U.S. Public Land Survey Monument is correct and complete to the best of my knowledge and belief.


 Signature _____ Date 8/7/2008


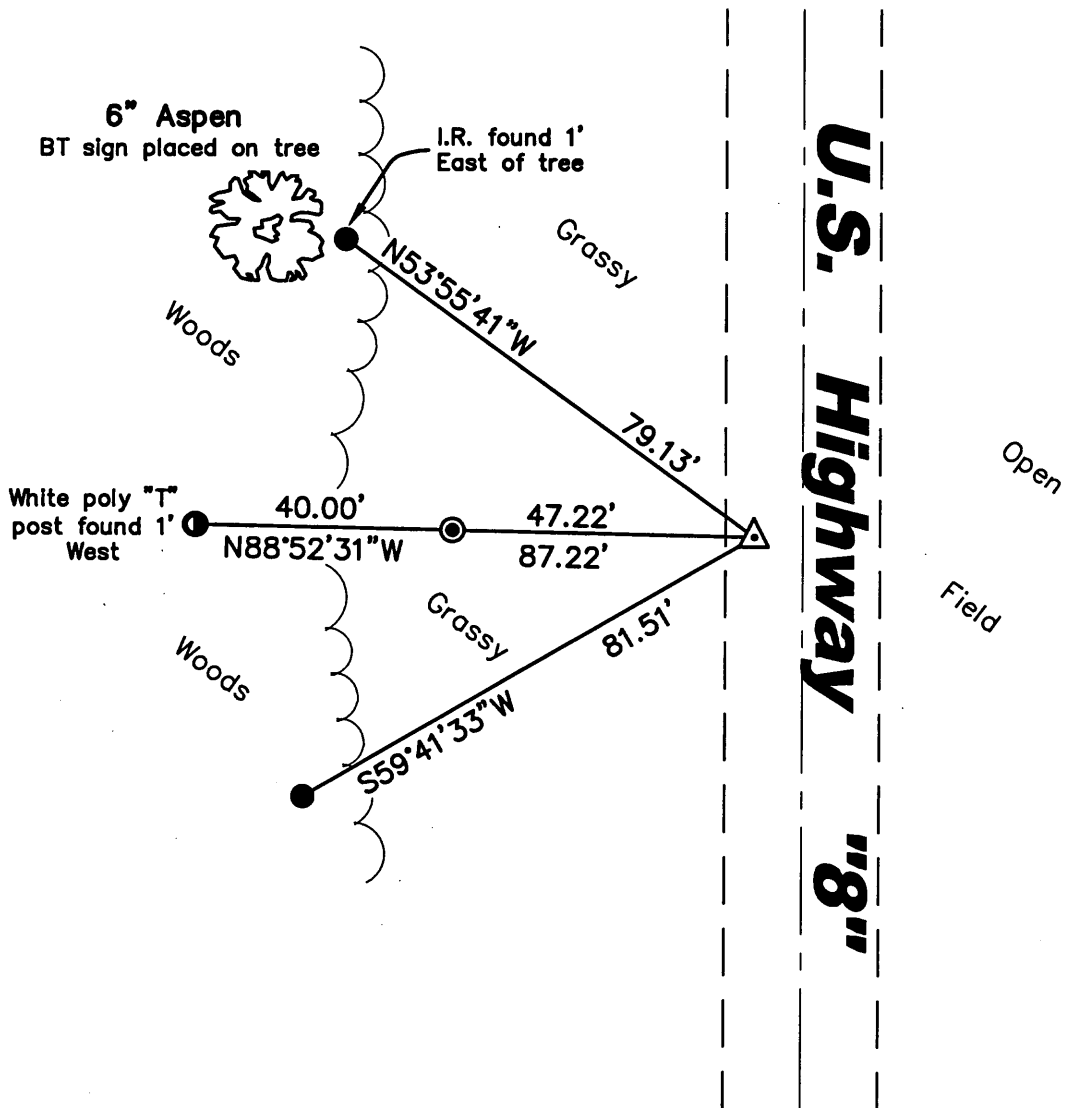
REGISTER OF DEEDS OFFICE
 ONEIDA COUNTY, WIS.







At _____ O'Clock _____ M
THOMAS H. LEIGHTON
 REGISTER OF DEEDS
 Sheet 1 of 2
 3607262000

Inde No. T-21

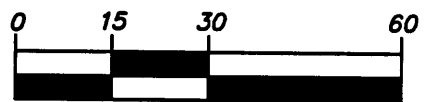
U.S. PUBLIC LAND SURVEY MONUMENT RECORD



Legend

-  Set Survey Nail
-  Found 1" Iron Pipe
W/Yellow Poly Reference Cap
-  Found 5/8" Iron Rebar
W/Yellow Poly Reference Cap
-  Found Old 1-1/4" Iron Pipe
W/Yellow Poly Reference Cap

GRAPHIC SCALE

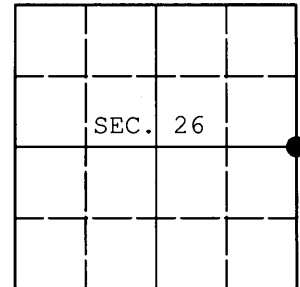


(IN FEET)

U.S. PUBLIC LAND SURVEY MONUMENT RECORD

Note: This form is intended and designed to fulfill all requirements of Wisconsin Administrative Code, Chapter A-E 7.08 U.S. Public Land Survey Monument Record (3) (a) (b) (c) (d) (e) (f) (g) (h) (i). An additional sheet may be added if necessary to conform with said requirements.

(a) CORNER LOCATION: WISCRS (Oneida County)
1/4 Cor. of Secs. 25 & 26 N: 142,756.571 USft
Township 36 North E: 223,599.891 USft
Range 7 East of the 4th P.M. Datum: NAD 1983(2011)
Town of Woodboro County of Oneida



(b) HISTORY OF ORIGINAL CORNER ESTABLISHMENT

Original Surveyor: Original Accessories:
Date of Survey:

(b)(f)(g)(h) Description of monument found at this corner and if it was accepted, state all evidence (material, testimonial, occupational, plats, records, other monuments) used as a basis for accepting. If not accepted or if nothing was found, state evidence used as basis for establishing location. If re-established through lost corner proportionate methods, indicate all monuments, distances and directions used to establish. Indicate type of monument and sign post found or set.

NOTE: This is a perpetuation of a previous USPLS Monument Record by Jonathan W. Dulin, RLS dated August 7, 2008 and filed in the office of the Oneida County Register of Deeds. A complete history of the corner can be found on the previous monument record. I accept the previous location as a true and faithful perpetuation or reestablishment of the original corner location and further perpetuate it as follows.

November 1, 2013: I found and accepted Dulin's monument, a Berntsen survey mark nail in the pavement of U.S. Highway 8. Dulin's accessories were found in substantial agreement with his previous record and were not remeasured as the sole purpose of this work is to report the coordinates of the corner point.

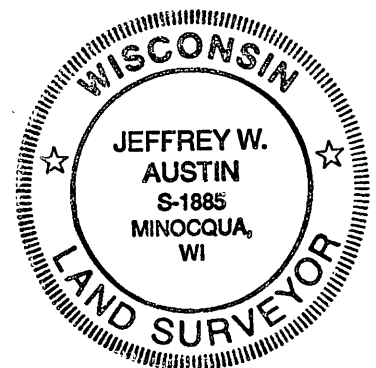
The coordinates shown were derived from a direct RTN GPS observation referenced to the WISCRS network.

(c)(d)(e) Plan view of corner with ties to at least 4 witness monuments. If in disagreement with previously established corner, show the distances between the two corners and also indicate the ties to the disputed.

REGISTER OF DEEDS OFFICE
ONEIDA COUNTY
FILED

DEC 23 2013

AT O'CLOCK M
KYLE J. FRANSON
REGISTER OF DEEDS



(i) I, Jeffrey W. Austin, Registered Land Surveyor No. S-1885, hereby certify that the corner location on this record was determined by me or under my direction and control and that this U.S. Public Land Survey Monument Record is correct and complete to the best of my knowledge and belief.

Handwritten signature of Jeffrey W. Austin.

DEC. 9. 2013

Signature

Date

U.S. PUBLIC LAND SURVEY MONUMENT RECORD

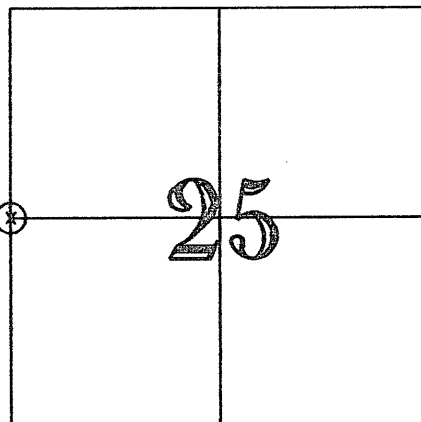
INDEX NO T-21

TYPE OF MONUMENT SURVEY MARKER NAIL

SECTION 25, T36N-R7E
 COORDINATE SYSTEM WCCS ONEIDA CO.

COORDINATES N 142,756.57 E 223,599.89 E

CORNER SET BY DENNIS J. CHRISTIE
 PROFESSIONAL LAND SURVEYOR S-1452
 TNT Professional Land Surveyors
 2154 Early St., Green Bay, WI 54304



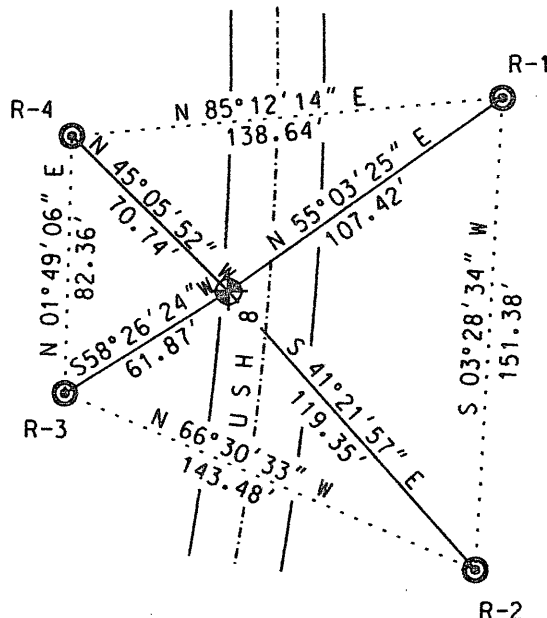
LOCATION SKETCH

ONEIDA COUNTY COORDINATES

R-1	142,818.10 N	223,687.94 E
R-2	142,667.00 N	223,678.77 E
R-3	142,724.19 N	223,547.17 E
R-4	142,806.50 N	223,549.78 E



SCALE: 1 IN = 50 FT



- BERNTSEN SURVEY NAIL
- WisDOT REFERENCE MONUMENT

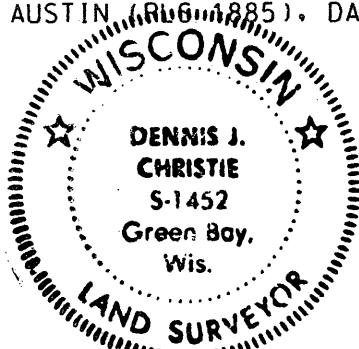
THIS CORNER WAS TIED USING A TOTAL STATION BEFORE THE WisDOT RESURFACING PROJECT BY NORTHEAST ASPHALT, INC. AFTER THE WisDOT PROJECT FINISHED RESURFACING USH 8. I SET A SURVEY MARKER NAIL AT THE PREVIOUSLY TIED DOWN SECTION CORNER AND SET FOUR NEW TIES AS SHOWN ON THIS SHEET.

SURVEYOR'S AFFIDAVIT

I HEREBY CERTIFY THAT THIS MONUMENT CONFORMS TO THE ORIGINAL GOVERNMENT SURVEYS AND THAT THIS MONUMENT RECORD IS INTENDED TO UPDATE THE MONUMENT RECORDS FILED BY WILLIAM C. ROHDE (RLS 841), DATED MARCH 23, 2000, JOHNATHAN W. DULIN (RLS 2754), DATED AUGUST 7, 2008, AND BY JEFFREY W. AUSTIN (RLS 1885), DATED DECEMBER 9, 2013.

Dennis J. Christie 11/17/15

 DENNIS J. CHRISTIE PLS 1452 REGISTER OF DEEDS OFFICE
 ONEIDA COUNTY
 FILED



MAP # _____

DATE FILED _____

BY... _____

DESCRIPTION FILED _____

ONEIDA CO. SURVEYOR'S OFFICE

DEC 01 2015

AT _____ O'CLOCK _____ M
 KYLE J. FRANSON
 REGISTER OF DEEDS

3607262000

T 21