

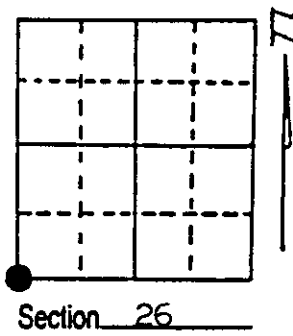
# U.S. PUBLIC LAND SURVEY MONUMENT RECORD

Note: This form is intended and designed to fulfill all requirements of Wisconsin Administrative Code, Chapter A-E 7.08 U.S. Public Land Survey Monument Record (3) (a) (b) (c) (d) (e) (f) (g) (h) (i). An additional sheet may be added if necessary to conform with said requirements.

(a) Corner location: Township 36 North  
 Range 7 East  
 Town Woodboro  
 County Oneida

REGISTER'S OFFICE  
Oneida County, Wis. }

received for Record the 11<sup>th</sup> day of  
June A.D. 19 90 at  
9:30 o'clock A. M. and recorded in  
 Vol. \_\_\_\_\_ on page \_\_\_\_\_  
Judith Beyer  
 Register



(b) (f) (g) (h) Description of monument found at this corner and if it was accepted, state all evidence (material, testimonial, occupational, plats, records, other monuments) used as a basis for accepting. If not accepted or if nothing was found, state evidence used as basis for establishing location. If reestablished through lost corner proportionate methods, indicate all monuments, distances and directions used to establish. Indicate type of monument found or set and sign post.

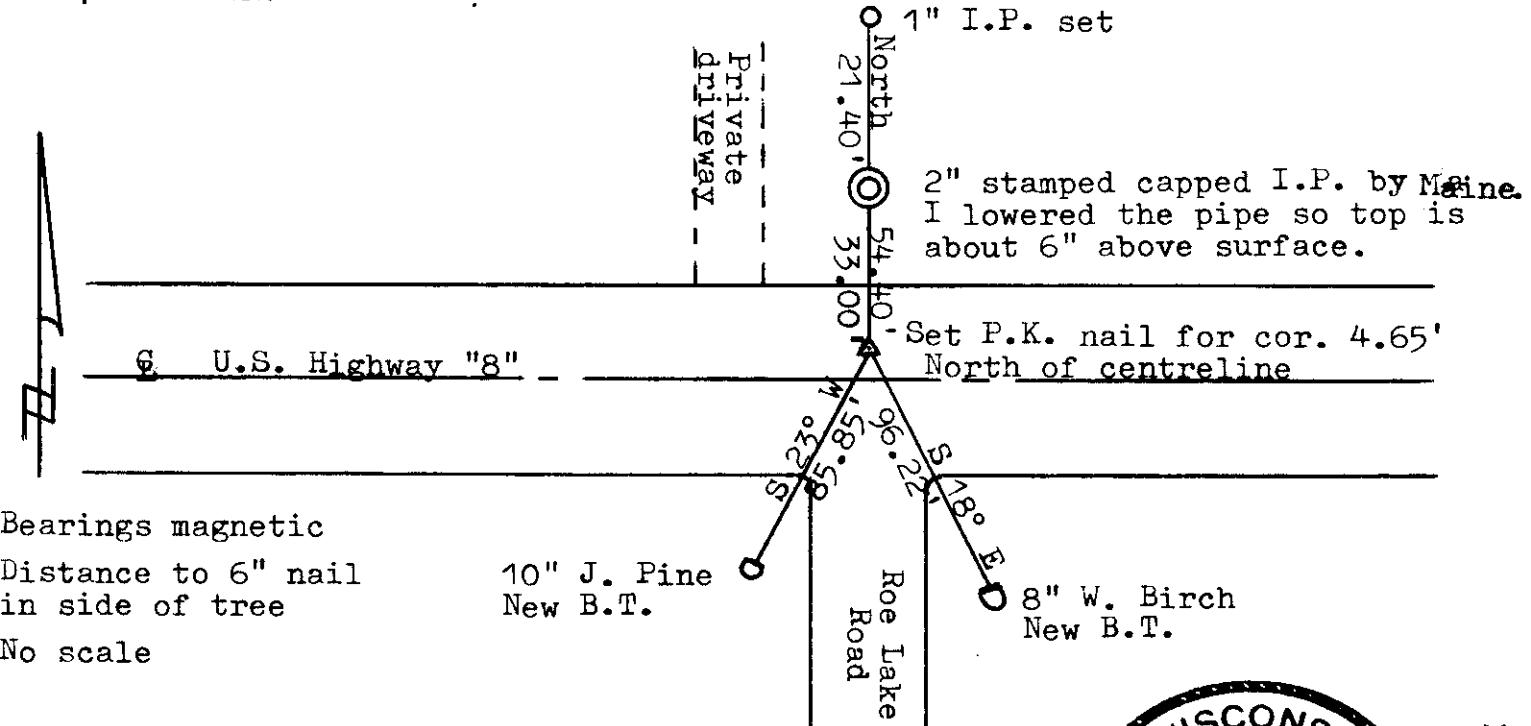
Nov 1862, Orig. cor. estab. by Joseph H. Jenkins North between 34 & 35.....  
 80.00 set post corner to Sections 26, 27, 34 & 35, B.T.s Birch 10 N 48 E 127,  
 Birch 9 S 58 E 140, Maple 6 S 42 W 40 & Birch 7 N 64 W 130

Oct 1891, B.F. Dorr determined corner location as being 40.33 south of 1/4  
 corner between 26 & 27

July 1937, Maine at Sec. Cor. common to Secs 26, 27, 34, 35 As Orig. Cor. was in  
 C.T. "N" and I had worked from the East (B.F. Dorr's notes) to determine its  
 Orig. Location. Offset an Official Corner 2 rods North.

May 1990, I found Maine's 2" stamped capped (official corner) I.P., measured  
 33.00' South and set P.K. nail in U.S. Highway "8", 4.65' North of the  
 centreline of the road. I lowered Maine's pipe, placed a 1" I.P. on same  
 line and made new B.T.s as shown below.

(c) (d) (e) Plan view of corner with ties to at least 4 witness monuments. If in disagreement with previously established corner, show the distances between the two corners and also indicate the ties to the disputed corner.



Bearings magnetic  
 Distance to 6" nail  
 in side of tree  
 No scale

(i) I, Lester J. Schmit R.L.S. 1192  
 (type or print name) certify that the corner location on this record  
 was determined by me or under my direction and control and that  
 this U.S. Public Land Survey Monument Record is correct and  
 complete to the best of my knowledge and belief.

Lester J. Schmit 8 Jun 90  
 Signature Date



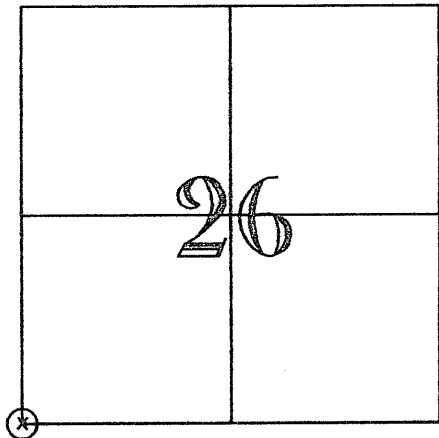
Stamp  
 3607270000

Index No. V - 17

# U.S. PUBLIC LAND SURVEY MONUMENT RECORD

INDEX NO     V-17    

TYPE OF MONUMENT SURVEY MARKER NAIL  
 SECTION 26, T36N-R7E  
 COORDINATE SYSTEM WCCS ONEIDA CO.  
 COORDINATES N 140,127.19 E 218,404.84 E  
 CORNER SET BY DENNIS J. CHRISTIE  
 PROFESSIONAL LAND SURVEYOR S-1452  
 TNT Professional Land Surveyors  
 2154 Early St., Green Bay, WI 54304



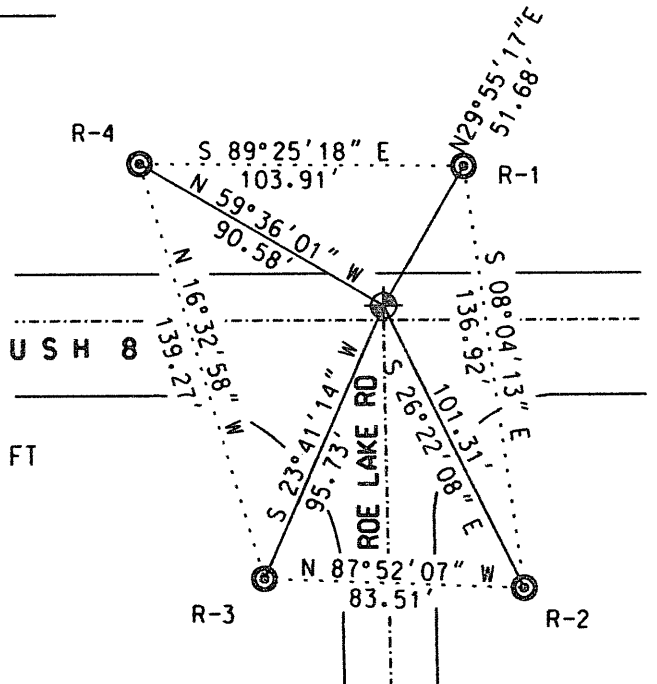
## LOCATION SKETCH

ONEIDA COUNTY COORDINATES

R-1	140,171.98 N	218,430.62 E
R-2	140,036.42 N	218,449.84 E
R-3	140,039.53 N	218,366.38 E
R-4	140,173.03 N	218,326.71 E



SCALE: 1 IN = 50 FT



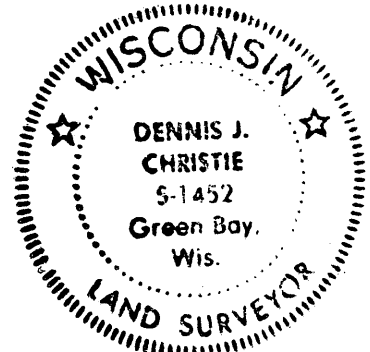
- BERNTSEN SURVEY NAIL
- WISDOT REFERENCE MONUMENT

THIS CORNER WAS TIED USING A TOTAL STATION BEFORE THE WISDOT RESURFACING PROJECT BY NORTHEAST ASPHALT, INC. AFTER THE WISDOT PROJECT FINISHED RESURFACING USH 8. I SET A SURVEY MARKER NAIL AT THE PREVIOUSLY TIED DOWN SECTION CORNER AND SET FOUR NEW TIES AS SHOWN ON THIS SHEET.

### SURVEYOR'S AFFIDAVIT

I HEREBY CERTIFY THAT THIS MONUMENT CONFORMS TO THE ORIGINAL GOVERNMENT SURVEYS AND THAT THIS MONUMENT RECORD IS INTENDED TO UPDATE THE MONUMENT RECORD FILED BY LESTER J. SCHMIT (RLS 1192), DATED JUNE 8, 1990.

Dennis J. Christie      11/17/15  
 DENNIS J. CHRISTIE, PLS 1451      DATE



3607270000

MAP # \_\_\_\_\_  
 DATE FILED \_\_\_\_\_  
 BY \_\_\_\_\_  
 DESCRIPTION FILED \_\_\_\_\_  
 ONEIDA CO. SURVEYOR'S OFFICE

REGISTER OF DEEDS OFFICE  
 ONEIDA COUNTY  
 FILED  
 DEC 01 2015  
 AT \_\_\_\_\_ O'CLOCK \_\_\_\_\_ M  
 KYLE J. FRANSEN  
 REGISTER OF DEEDS

V-17