

This form is intended to fulfill the requirements of Chapter A-E 7.08 (3)(a) thru (i) U.S. Public Land Survey Monument Location Record, Wisconsin Administrative Code. Use the reverse side of form for continuation.

U.S. PUBLIC LAND SURVEY MONUMENT LOCATION RECORD

Recorders Data

USPLS CORNER: NORTH 1/4 SECTION: 34 TOWNSHIP: 36 NORTH RANGE: 7 EAST

NAME OF WATERWAY FOR M.C. CORNER : N/A SECTION LINE: N/A

~~(CITY)VILLAGE(TOWN)~~ OF: WOODBORO COUNTY OF: ONEIDA

Description of monument found or placed and all other evidence used as the basis for monument location; including monuments and related measurements required if the corner location was reestablished by lost corner proportionate methods. Also indicate name of original surveyor, original survey date and the corner monument, bearing trees, witness or other reference monuments established; including measured bearing and distance ties, from available records.

Found and accepted an undisturbed and plumb older 2" dia. iron pipe monument with stamped brass cap 28" above existing grade at this corner location. I also found but did not accept an old 1" dia. iron pipe monument about 27 feet North, with an iron rod flush in center of uncapped top 11" above grade, along the West side of an old 5" squared wood marker post with pointed top and scribed "S34" on South face, "1/4" on East face and "S27" on North face, which I believe was erroneously set by Owens-Illinois in late 1960's per a 1987 section map prepared by William Stuth, RLS 1418 and filed in Oneida County survey records.

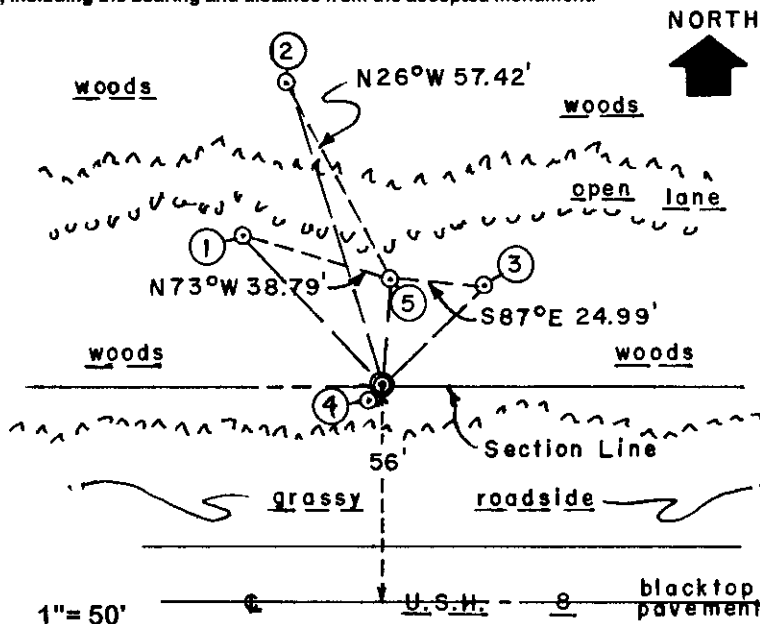
In November 1862, Joseph Jenkins/GLO set a wood post as the original corner and marked a single OBT, a 9" Pw S61°E 70 links as he noted no other trees near, all of which are now obliterated.

In June 1937, Maine set "official 1/4 corner monument (normally a brass capped iron pipe) near north bank of CTH N" at 40.43 chains from NW section corner, "computed from B.F. Dorrs notes". He also noted a telephone pole N79.5°W 0.72 chains, now gone.

In August 1996, Lester Schmit/RLS1192, also found and accepted the foregoing brass capped iron pipe as "Maines official corner", per his plat of survey filed as B-3838 in Oneida County survey records.

This recovery completed September 29, 1999; there were no direct witnesses other than vehicle drive-bys. I set a standard white poly "T" marker post 6" South of the accepted corner monument.

Plan view map of monument location with bearing and distance ties to a minimum of four(4) described witness or reference monuments of concrete, natural stone, iron, live bearing trees or equivalent material. If applicable, also show a minimum of two(2) bearing and distance ties to any other monument found and not accepted; including the bearing and distance from the accepted monument.



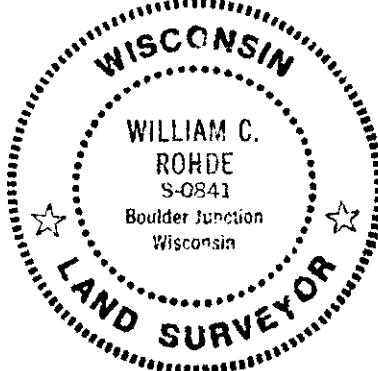
WITNESS MONUMENT TIES:

- ① New BT East 10" Mr of two N43°W 52.87'.
- ② New BT South 8" Mr of two N17°W 82.38'.
- ③ New BT 7" Mr of clump of three N45°E 36.65'.
- ④ New BT West 5" Mr of twin S40°W 4.10'.
- ⑤ Old 1" iron pipe with center rod flush in uncapped top as described above N04°E 27.30', from which I found Owens Illinois 7" Oak BT N32°E 16.0' as a sawed 15" stump N37°E at 15.5' to center and 12" high.

SCALE: 1" = 50' U.S.H. 8 black top pavement

Unless otherwise indicated, all bearing tree ties are to a .25" dia. by 2.5" long PK nail with a 1.25" dia. steel washer driven into unblazed right face and a .25" dia. by 2.5" long PK nail with a 2" dia. steel washer stamped BT is also driven into unblazed face of bearing tree at DBH; the basis for measured bearings is by compass to nearest degree and all tie distances are measured horizontal by steel tape corrected to nearest 1/100th feet at standard temperature of 68° F.

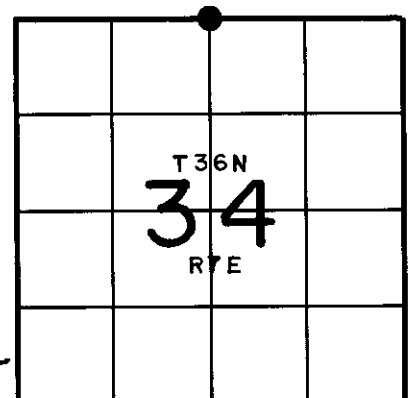
RLS SEAL:



LAND SURVEYOR CERTIFICATE:

I, William C. Rohde, hereby certify that I am duly licensed as a Professional Land Surveyor in the State of Wisconsin; that this USPLS monument location was determined by me and/or under my direct supervision and control; and that this U.S. Public Land Survey Monument Location Record is true and correct to the best of my knowledge and belief.

Signed: *William C. Rohde*
William C. Rohde RLS 841



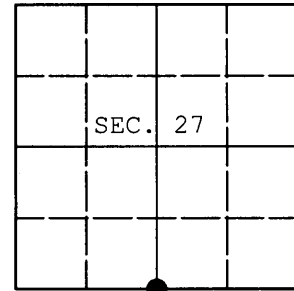
SECTION LOCATION MAP
INDEX NO. V 15

3607270020

U.S. PUBLIC LAND SURVEY MONUMENT RECORD

Note: This form is intended and designed to fulfill all requirements of Wisconsin Administrative Code, Chapter A-E 7.08 U.S. Public Land Survey Monument Record (3) (a) (b) (c) (d) (e) (f) (g) (h) (i). An additional sheet may be added if necessary to conform with said requirements.

(a) CORNER LOCATION: WISCRS (Oneida County)
1/4 Cor. of Secs. 27 & 34 N: 140,248.077 USft
Township 36 North E: 215,763.418 USft
Range 7 East of the 4th P.M. Datum: NAD 1983(2011)
Town of Woodboro County of Oneida



(b) HISTORY OF ORIGINAL CORNER ESTABLISHMENT

Original Surveyor: Original Accessories:
Date of Survey:

(b)(f)(g)(h) Description of monument found at this corner and if it was accepted, state all evidence (material, testimonial, occupational, plats, records, other monuments) used as a basis for accepting. If not accepted or if nothing was found, state evidence used as basis for establishing location. If re-established through lost corner proportionate methods, indicate all monuments, distances and directions used to establish. Indicate type of monument and sign post found or set.

NOTE: This is a perpetuation of a previous USPLS Monument Record by William C. Rohde, RLS dated March 22, 2000 and filed in the office of the Oneida County Register of Deeds. A complete history of the corner can be found on the previous monument record. I accept the previous location as a true and faithful perpetuation or reestablishment of the original corner location and further perpetuate it as follows.

November 1, 2013: I found and accepted Rohde's monument, a 2-1/2" diam. iron pipe with 2-1/2" diam. brass cap. Rohde's accessories were found in substantial agreement with his previous record and were not remeasured as the sole purpose of this work is to report the coordinates of the corner point.

The coordinates shown were derived from a direct RTN GPS observation referenced to the WISCORS network.

(c)(d)(e) Plan view of corner with ties to at least 4 witness monuments. If in disagreement with previously established corner, show the distances between the two corners and also indicate the ties to the disputed.

REGISTER OF DEEDS OFFICE
ONEIDA COUNTY
FILED

DEC 23 2013

AT O'CLOCK M
KYLE J. FRANSON
REGISTER OF DEEDS

(i) I, Jeffrey W. Austin, Registered Land Surveyor No. S-1885, hereby certify that the corner location on this record was determined by me or under my direction and control and that this U.S. Public Land Survey Monument Record is correct and complete to the best of my knowledge and belief.



Handwritten signature of Jeffrey W. Austin.

DEC. 9, 2013
Date