

Stock No. 26273

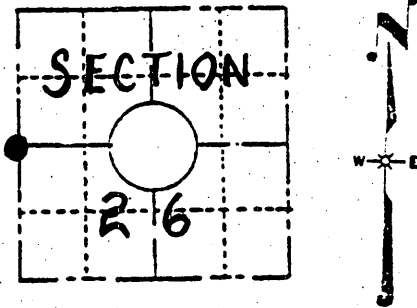
U. S. PUBLIC LAND SURVEY MONUMENT RECORD

INSTRUCTIONS: This record shall show the location of the corner and shall include all of the following nine elements (a through i).

- (a) Identify the corner by reference to the U.S. public land survey system.

Compared with all record data and accepted as correct.

*Robert H. Wm* 18 JAN 84  
Oneida County Surveyor Date



The west one quarter of Section 26  
T 36N, R7E  
4th Principle Meridian

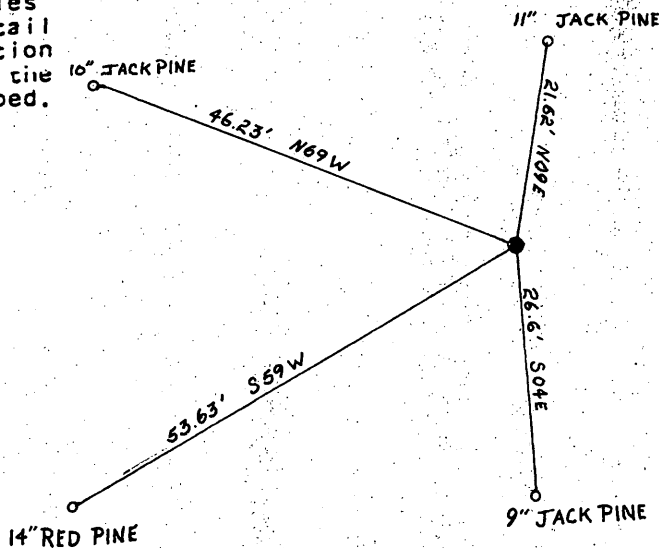
LOCATION SKETCH  
(Location of landmark indicated by "⊙")

- (b) Describe any record evidence, monument evidence, occupational evidence, testimonial evidence or any other material evidence you considered, and whether the monument was found or placed.

Original corner was set by Jenkins in 1862. It was recovered by Vaughn in 1905. It was recovered by Maines in 1937. Maines set an official corner July 2, 1937. I recovered the official corner and remains of one bearing tree (9" Jack Pine S 01 E 28.86'). I set new bearing trees.

- (c) In the plan view drawing below, provide reference ties to at least 4 witness monuments, or, if the location is within a municipality, to at least 2 witness monuments. (Witness monuments shall be made of concrete, natural stone, iron or other equally durable material, except wood.) Describe witness monuments.

- (d) Show a plan view drawing depicting the relevant monuments and reference ties which is sufficient in detail to enable accurate relocation of the corner monument if the corner monument is disturbed. Indicate north.



7-17

3607272000

(e) Describe any material discrepancy between the location of the corner as restored or reestablished and the location of that corner as previously restored or reestablished by distance and direction. Show the discrepancy on the plan view drawing under (d), above. Show the distances between the corner as previously restored or reestablished and (1) the corner as restored or reestablished, and (2) to at least 2 of the witness monuments shown on the drawing in (d), above.

(f) Was the corner restored through acceptance of (1) an obliterated evidence location, or, (2) a found perpetuated location?

The corner bearing trees were restored through of a found perpetuated location as described on the reverse side of this form.

(g&h) Was the corner reestablished through lost corner proportionate methods? If so, show the method, including the directions and distances to other public land survey corners used as evidence or used for proportioning in determining the corner location?

REGISTER'S OFFICE }  
Oneida County, Wis. }

Received for Record the 18<sup>th</sup> day of  
January A. D. 1984 at  
10<sup>00</sup> o'clock A M. and recorded in

Vol. \_\_\_\_\_ on page \_\_\_\_\_  
Louis Verage Kuehn  
Register

(i) I, PAUL W. MARKWORTH  
(type or print name) certify that the corner location shown  
on this record was determined by me or under my direction and  
control and that this U.S. Public Land Survey Monument Record  
is correct and complete to the best of my knowledge and belief.

Paul W Markworth  
Signature

Date

