

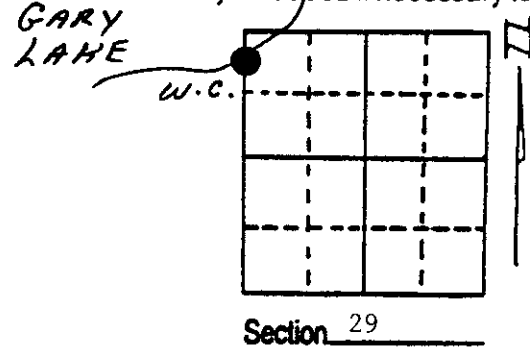
U.S. PUBLIC LAND SURVEY MONUMENT RECORD

Note: This form is intended and designed to fulfill all requirements of Wisconsin Administrative Code, Chapter A-E 7.08 U.S. Public Land Survey Monument Record (3) (a) (b) (c) (d) (e) (f) (g) (h) (i). An additional sheet may be added if necessary to conform with said requirements.

(a) Corner location: Township 36 North
 Range 7 East/West

Town/City/Village Woodboro

County Oneida



(b) (f) (g) (h) Description of monument found at this corner and if it was accepted, state all evidence (material, testimonial, occupational, plats, records, other monuments) used as a basis for accepting. If not accepted or if nothing was found, state evidence used as basis for establishing location. If reestablished through lost corner proportionate methods, indicate all monuments, distances and directions used to establish. Indicate type of monument found or set and sign post.

11/1862 - Joseph H. Jenkins established a Witness Corner, a 76.20 chains to the Section Corner and set a wood post with two BTs:
 20" W. Pine, N85°E, 40 Links 10" W. Pine, S58°E, 19 Links

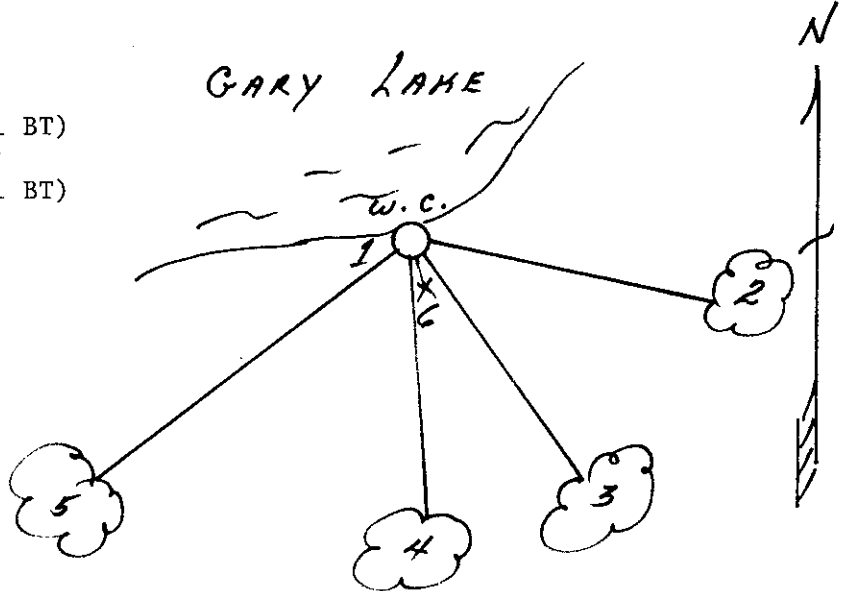
10/20/1937 - Maine recovered stumps of both original BTs and set a 2" x 60" iron pipe with brass cap.

3/1/1990 - Milo E. Stefan found Maine's monument in good condition along side a 6" x 6" x 4' cedar post and two local BTs:
 8" White Birch, S39°E, 32.42' 18" White Pine, S35°W, 50.66'
 I made two more BTs and set plastic sign post.

(c) (d) (e) Plan view of corner with ties to at least 4 witness monuments. If in disagreement with previously established corner, show the distances between the two corners and also indicate the ties to the disputed corner.

- 1) 2" x 60" iron pipe with brass cap
- 2) 6" White Birch, S78°E, 32.41'
- 3) 8" White Birch, S39°E, 32.42' (Local BT)
- 4) 9" White Birch, S8°E, 30.14'
- 5) 18" White Pine, S35°W, 50.66' (Local BT)
- 6) Plastic sign post, SE, 1.0'

Distances to nail in side of BT.
 BTs scribed "BT" in stump blaze.



REGISTER OF DEEDS OFFICE
 ONEIDA COUNTY WIS
FILED
 APR 12 1990
 At _____ O'Clock _____ M
THOMAS H. LEIGHTON
 REGISTER OF DEEDS

(i) I, Milo E. Stefan
 (type or print name) certify that the corner location on this record was determined by me or under my direction and control and that this U.S. Public Land Survey Monument Record is correct and complete to the best of my knowledge and belief.

Milo E. Stefan 3/1/90
 Signature Date



3607303500

Stefan

Index No. R-5