

ONEIDA COUNTY U.S. PUBLIC LAND SURVEY MONUMENT LOCATION RECORD

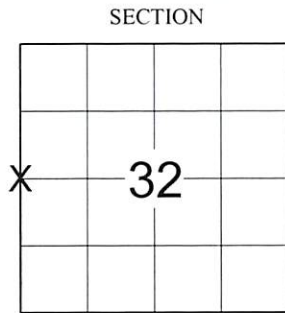
Oneida County
Land Information Office
Filed
12/2/2024

SECTION 32
TOWNSHIP 36 N
RANGE 7 E

LANDMARK BENCHMARK _____
FOUND SET
RESET RE-TIED

WOODBORO
CITY, VILLAGE, TOWN

CORNER IDENTITY: WEST 1/4 CORNER SEC. 32 - 1-1/2" O.D. IRON PIPE
ONEIDA COUNTY COORDINATE: N: 137442.803
E: 202562.293
ELEVATION-(FEET): _____ DATUM: NAD 83 (2011)
WEATHER: SUNNY
DATE OF SURVEY: 10/10/2024 TEMPERATURE: 57 °F
SURVEY PARTY: CHRIS FIERI / CALEB BILDA



LOCATION
(Indicated By X)

BASIS FOR MONUMENT LOCATION:

(DESCRIBE METHOD OF SURVEY AND CORNER AUTHENTICATION)

February 1 1983 - Lester Schmidt performs a survey and recovers a 1" iron pipe at this corner location. His map is filed at Oneida County on June 28, 1996 as Map#B3367.

October 10, 2024 - We recovered the 40 corner to the North of this corner to compute a search area. We searched the area and recovered a 1-1/2 iron pipe. We accepted the iron pipe as the corner location and set out four 3/4" iron bars to perpetuate the corner location as shown below.



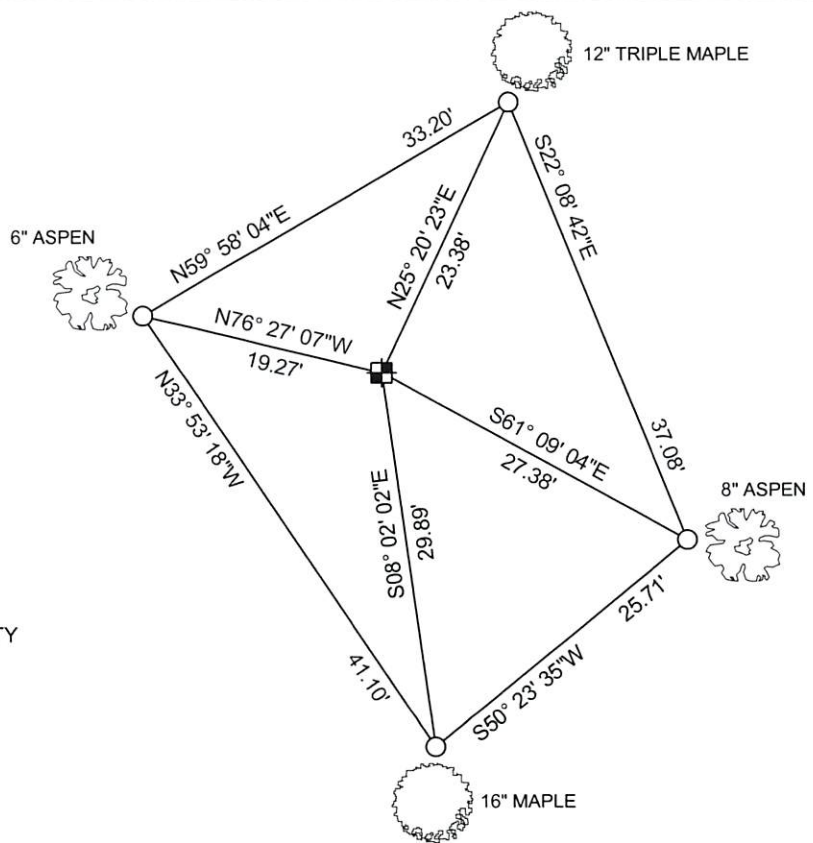
CERTIFIED CORRECT:

Christopher L. Fieri
CHRISTOPHER L. FIERI S-2954
Registered Land Surveyor
DATE: 10-29-24

FIELD BOOK NO. NA PAGE NO. NA
COMPANY RIVERSIDE LAND SURVEYING LLC

TIE SKETCH:

- FOUND 1-1/2" O.D. IRON PIPE MONUMENT
 - SET 3/4" x 18" IRON BAR



BEARINGS ARE BASED ON THE ONEIDA COUNTY COORDINATE SYSTEM NAD 83 (2011) AND REFERENCED AS SHOWN

THIS DRAWING IS NOT TO SCALE

36007312000
Index No. X-5