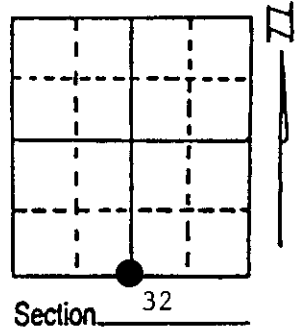


U.S. PUBLIC LAND SURVEY MONUMENT RECORD

Note: This form is intended and designed to fulfill all requirements of Wisconsin Administrative Code, Chapter A-E 7.08 U.S. Public Land Survey Monument Record (3) (a) (b) (c) (d) (e) (f) (g) (h) (i). An additional sheet may be added if necessary to conform with said requirements.

(a) Corner location: Township 36 North
 Range 7 East/West

Town/City/Village Woodboro
 County Oneida



(b) (f) (g) (h) Description of monument found at this corner and if it was accepted, state all evidence (material, testimonial, occupational, plats, records, other monuments) used as a basis for accepting. If not accepted or if nothing was found, state evidence used as basis for establishing location. If reestablished through lost corner proportionate methods, indicate all monuments, distances and directions used to establish. Indicate type of monument found or set and sign post.

August 31, 1860 - Alfred Millard established this corner and set a wood post with two BTs:
 16" Y. Pine, S81°E, 23 Links 10" W. Pine, S79°W, 19 Links

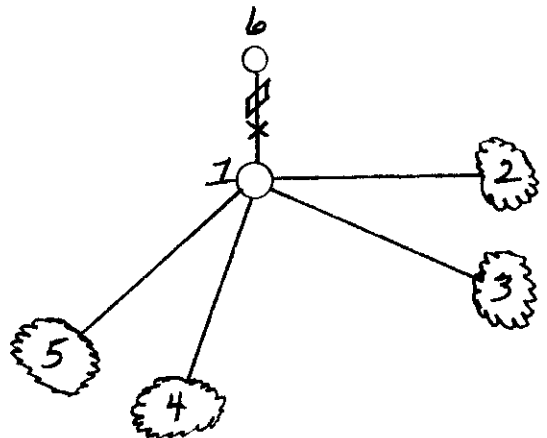
October 22, 1949 - Wincentzen used iron pipe in road when he was working south side of section 32. A Witness Corner is 33.00' north and two new BTs:
 6" Aspen, N57°W, 72 Links 6" Cherry, N10°W, 30 Links

July 27, 1989 - Milo E. Stefan found a 3" x 24" iron pipe in road in collar of small stone and Witness Corner and location poster post North 33.0'. No evidence of BTs remain.
 I accept this iron pipe as the perpetuated corner position and restore same by placement of a county monument, making new BTs and placing a plastic sign post.

(c) (d) (e) Plan view of corner with ties to at least 4 witness monuments. If in disagreement with previously established corner, show the distances between the two corners and also indicate the ties to the disputed corner.

- 1) 2" x 30" Aluminum County Monument with iron pipe buried along side.
- 2) 4" Red Oak, N86°E, 119.67'
- 3) 10" Red Oak, S69°E, 80.49'
- 4) 7" Red Pine, S17°W, 30.50'
- 5) 7" Red Pine, S50°W, 44.85'
- 6) Witness Corner, 1" iron pipe; Location Corner Post and Plastic Sign Post, North, 33'

Distances to nail in side of BTs.
 BTs scribed "BT" in stump blaze.



(i) I, Milo E. Stefan
 (type or print name) certify that the corner location on this record was determined by me or under my direction and control and that this U.S. Public Land Survey Monument Record is correct and complete to the best of my knowledge and belief.

Milo E. Stefan 8/5/89
 Signature Date



Index No. Z-7

3607320020

MAR 24 2023

KYLE J. FRANSON
REGISTER OF DEEDS

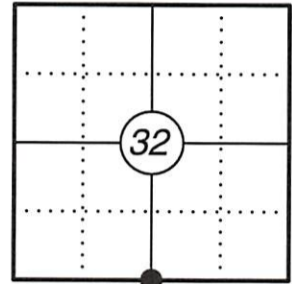
U.S. PUBLIC LAND SURVEY MONUMENT RECORD

This form is intended and designed to fulfill all requirements of Wisconsin Administrative Code, Chapter A-E 7.08 U.S. Public Land Survey Monument Record (3) (a)(b)(c)(d)(e)(f)(g)(h)(i). An additional sheet may be added if necessary to confirm with said requirements.

(a) Corner Location:

S 1/4 Corner Section 32	WISCRS - Oneida County	Published Record
Township 36 North	N: 134820.62	N: (134820.82)
Range 07 East	E: 205174.70	E: (205174.67)
Town of Woodboro	Datum: NAD 83 (2011)	
County of Oneida	GNSS Method: RTK Direct	
	GNSS Control: WISCORS VRS	

Corner ID: 3607320020



(b) History of Original Corner:

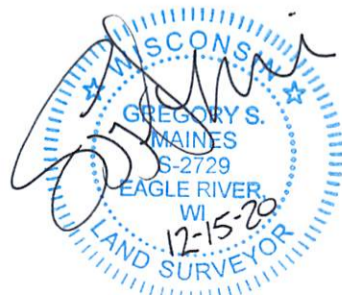
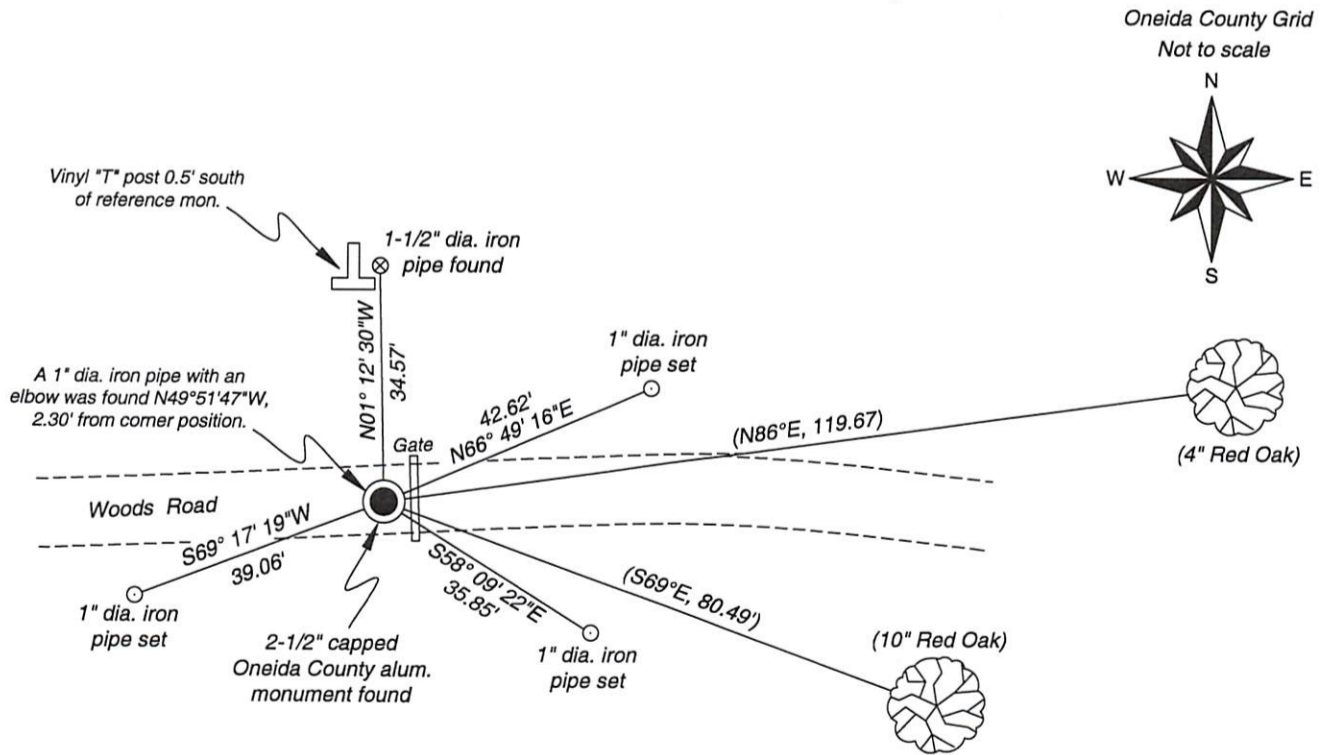
Original Surveyor: Alfred Millard
Date of Survey: August 31, 1860
Original B.T.'s: 16" Y. Pine - S 81° E, 23 Links
10" W. Pine - S 79° W, 19 Links

(f)(g)(h) Description of monument found at this corner and if it was accepted, state all evidence (material, testimonial, occupational, plats, records, other monuments) used as a basis for establishing location. If reestablishing through lost corner proportionate methods, indicate all monuments, distances, and directions used to establish. Indicate type of monument and sign post found or set.

For corner history, see previous U.S. Public Land Survey Monument Record by Milo E. Stefan, dated August 5, 1989.

12/15/2020 - I found and accepted a 2-1/2" dia. capped Oneida County aluminum monument buried 4" below grade in a woods road along with two of Stefan's bearing trees from 1989. I set three new reference monuments and used one existing iron pipe as a reference monument to witness the corner as shown below.

(c)(d)(e) Plan view of corner with ties to at least four witnesses. If in disagreement with previously established corner, show the distances between the two corners and also indicate the tie to the disputed corner.



Certification

I, Gregory S. Maines, Professional Land Surveyor No. 2729, hereby certify that the corner location on this record was referenced by me or under my direction and control and that this U.S. Public Land Survey Monument Record is complete to the best of my knowledge and belief. REF: 2020323