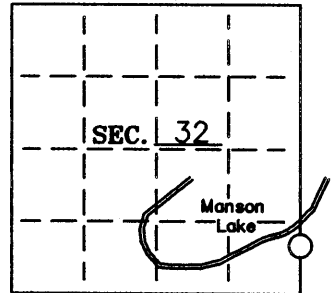


U. S. PUBLIC LAND SURVEY MONUMENT RECORD

Note: This form is intended and designed to fulfill all requirements of Wisconsin Administrative Code—Chapter A-E 7.08 U. S. Public Land Survey Monument Record (3)(a)(b)(c)(d)(e)(f)(g)(h)(i). An additional sheet may be added if necessary to conform with said requirements.

(a) CORNER LOCATION: State Plane Coordinates
Meander corner of Sec. 32 X ---
 Township 36 North Y ---
 Range 7 East Datum Base ---
 Town Woodboro County of Oneida



(b) HISTORY OF ORIGINAL CORNER ESTABLISHMENT:
 Original Surveyor: Joseph H. Jenkins
 Date of Survey: Commenced 1862
 Completed 1862

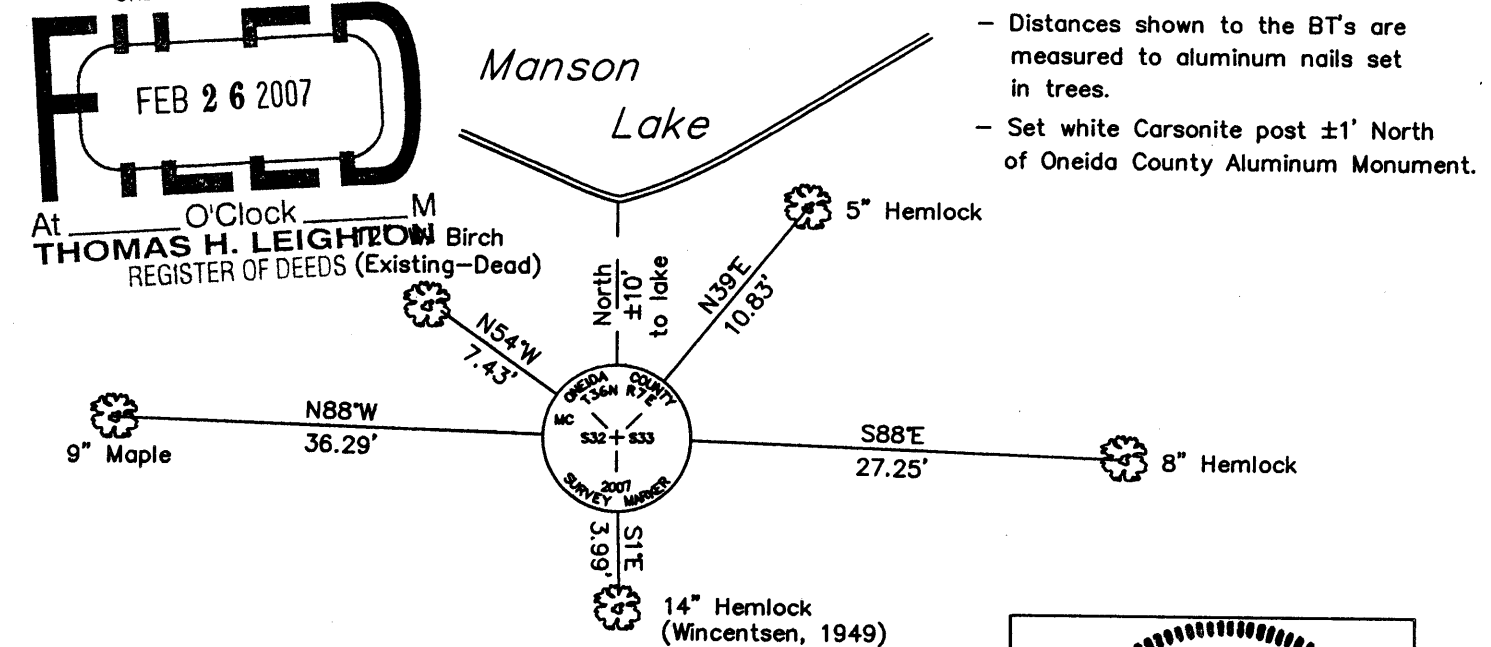
Original B.T.'S

10" Birch, S61°W, 30 lks
 12" Birch, S86°E, 28 lks

(b)(f)(g)(h) Description of monument found at this corner and if it was accepted—state all evidence (material—testimonial—occupation—plats—records—other monuments) used as a basis for accepting. If not accepted or if nothing was found state evidence used as basis for establishing location. If reestablished through lost corner proportionate methods indicate all monuments—distances and directions used to establish. Indicate type of monument and sign post found or set.

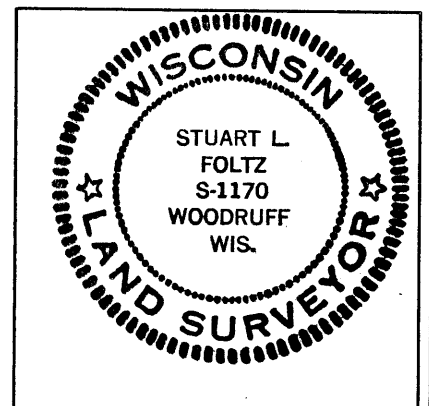
- 1949— F.R. Wincentsen set an iron pipe near the south shore of Manson Lake for the Meander Corner on the east line of Section 32 while surveying Gov't. Lots 6 & 7, Section 32, and Gov't Lot 4, Section 33. Bearing trees on 1949 survey map: 6" Oak, N85°W, 5.0'; and 5" W. Birch, N34°E, 11.2'. Bearing trees on 1949 field notes: 6" Hemlock, S3°E, 6 lks; and 7" W. Birch, S52°E, 19.5 lks.
- 1974— Genisot & Associates, Inc. found and accepted an iron pipe at the Meander Corner location.
- 2007— We found and accepted a 2" iron pipe for the Meander Corner on the south shore of Manson Lake and replaced it with an Oneida County Aluminum Monument. Witnesses for the Meander Corner are shown below.

(c)(d)(e) Plan view of corner with ties to at least 4 witness monuments. If in disagreement with previously established corner—show the distances between the two corners and also indicate the ties to the disputed corner—



(i) I Stuart L. Foltz S-1170
 hereby certify that the corner location on this record was determined by me or under my direction and control and that this U.S. Public Land Survey Monument Record is correct and complete to the best of my knowledge and belief.

Signature Stuart L. Foltz Foltz and Associates, Inc. Date 2/21/2007



INDEX NO. 7-29

36073206 00