

# U.S. PUBLIC LAND SURVEY MONUMENT RECORD

NOTE: This form is intended and designed to fulfill all requirements of Wisconsin Administrative Code, Chapter A-E 7.08 U.S. Public Land Survey Monument Record (3)(a)(b)(c)(d)(e)(f)(g)(h)(i). An additional sheet may be added if necessary to conform with said requirements.

REGISTER OF DEEDS OFFICE  
ONEIDA COUNTY

**FILED**

**AUG 23 2012**

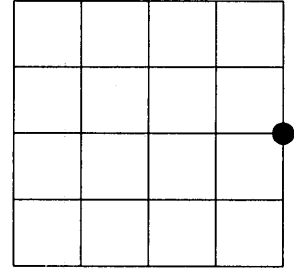
(a) Corner location: Township 36 North

Range 7 East

Woodboro Township

Oneida County, Wisconsin

AT \_\_\_\_\_ O'CLOCK \_\_\_\_\_ M  
**THOMAS H. LEIGHTON**  
REGISTER OF DEEDS



Section 34

(b)(f)(g)(h) Description of monument found at this corner and if it was accepted, state all evidence (material, testimonial, occupational, plats, records, other monuments) used as a basis for accepting. If not accepted or if nothing was found, state evidence used as basis for establishing location. If reestablished through lost corner proportionate methods, indicate all monuments, distances and directions used to establish. Indicate type of monument found or set and sign post.

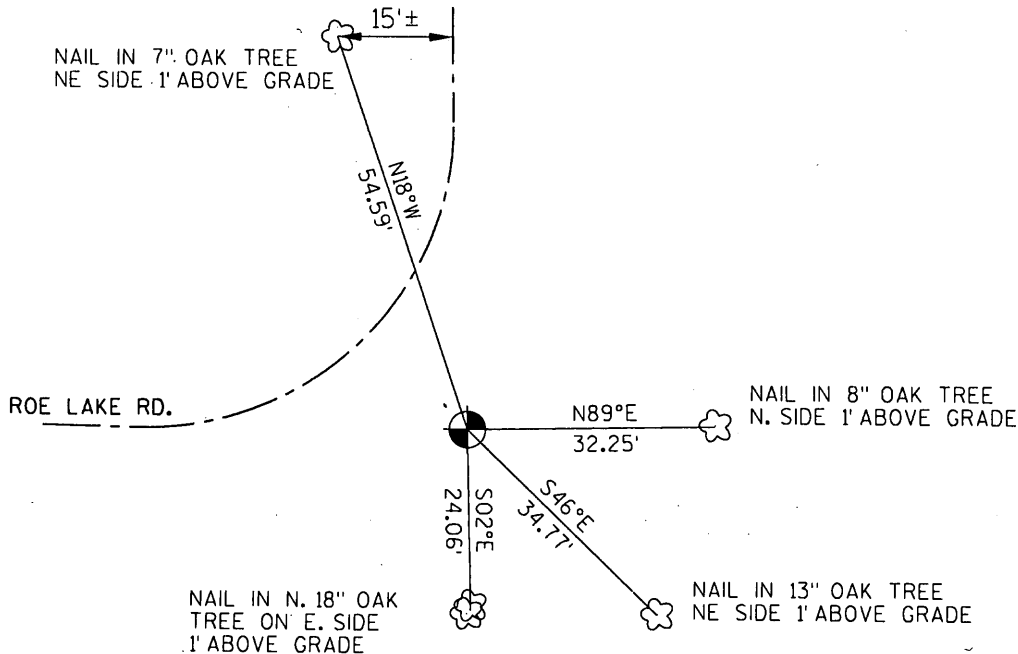
Nov. 1869 Joseph H. Jenkins/GLO set post and marked BT's: Birch 7 N.59°E. 20 lks & Aspen 8 S.45°W. 15 lks. Now obliterated.

October 28, 1891 B.F.Dorr surveyed Section 35, see Old Field Book 22, page 39 County Surveyor files. Referenced to BT's low stumps.

12/2/1986 William Stuth surveyor for Owens-Illinois prepared a map stating that in the late 1960s he surveyed Section 34. He referenced to iron pipe at the West 1/4 of Sec.34 and at the Center of Section 34 and stake "by others" at the East 1/4 of Section 34.

At site we found Roe Lake Road, a small graveled travel way going North and West. I also found old fence wire running South, in 18" diameter oak tree on the South side of travel way. I took measurements to existing evidence in section 34 and 35. I could find no evidence of stake as referenced by Bill Stuth at this 1/4 corner. I established this 1/4 corner by intersecting centerline of Roe Road and holding old fence line going South through tree. This position agreed with extending a line West through 1 1/4" iron pipe found at the Center of Section 34, to a calculated position at the West 1/4 of Section 34. (Calculated the West 1/4 at equal distance between the Northwest and Southwest corner of Section 34). This position also agreed well with old measurements by B F Dorr in Section 35. I set a 1 1/4" by 18" solid rod at calculated position.

(c)(d)(e) Plan view of corner with ties to at least 4 witness monuments. If in disagreement with previously established corner, show the distances between the two corners and also indicate the ties to the disputed corner.



(i) I, Eugene C. Uttech, Registered Land Surveyor #S-1451, hereby certify that the corner location on this record was determined by me or under my direction and control and that this U.S. Public Land Survey Monument Record is correct and complete to the best of my knowledge and belief.



*Eugene C. Uttech*  
Signature

August 17, 2012  
Date

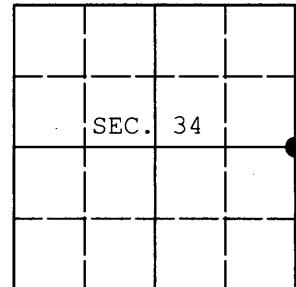
3607342000

Index No. X 17

**U.S. PUBLIC LAND SURVEY MONUMENT RECORD**

Note: This form is intended and designed to fulfill all requirements of Wisconsin Administrative Code, Chapter A-E 7.08 U.S. Public Land Survey Monument Record (3) (a) (b) (c) (d) (e) (f) (g) (h) (i). An additional sheet may be added if necessary to conform with said requirements.

(a) CORNER LOCATION: WISCRS (Oneida County)  
1/4 Cor. of Secs. 34 & 35 N: 137,484.781 USft  
Township 36 North E: 218,422.542 USft  
Range 7 East of the 4th P.M. Datum: NAD 1983(2011)  
Town of Woodboro County of Oneida



(b) HISTORY OF ORIGINAL CORNER ESTABLISHMENT

Original Surveyor: Original Accessories:  
Date of Survey:

(b) (f) (g) (h) Description of monument found at this corner and if it was accepted, state all evidence (material, testimonial, occupational, plats, records, other monuments) used as a basis for accepting. If not accepted or if nothing was found, state evidence used as basis for establishing location. If re-established through lost corner proportionate methods, indicate all monuments, distances and directions used to establish. Indicate type of monument and sign post found or set.

NOTE: This is a perpetuation of a previous USPLS Monument Record by Eugene C. Uttech, RLS dated August 17, 2012 and filed in the office of the Oneida County Register of Deeds. A complete history of the corner can be found on the previous monument record. I accept the previous location as a true and faithful perpetuation or reestablishment of the original corner location and further perpetuate it as follows.

November 1, 2013: I found and accepted Uttech's monument, a 1-1/4" diam. iron rod. Uttech's accessories were found in substantial agreement with his previous record and were not remeasured as the sole purpose of this work is to report the coordinates of the corner point.

The coordinates shown were derived from a direct RTN GPS observation referenced to the WISCRS network.

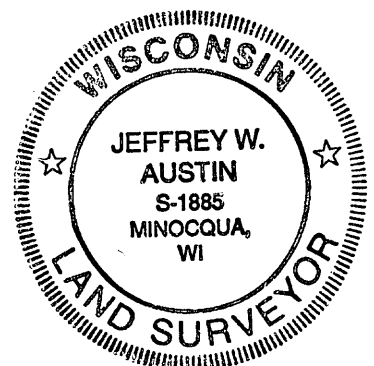
(c) (d) (e) Plan view of corner with ties to at least 4 witness monuments. If in disagreement with previously established corner, show the distances between the two corners and also indicate the ties to the disputed.

REGISTER OF DEEDS OFFICE  
ONEIDA COUNTY  
FILED

DEC 23 2013

AT \_\_\_\_\_ O'CLOCK \_\_\_\_\_ M  
KYLE J. FRANSON  
REGISTER OF DEEDS

(i) I, Jeffrey W. Austin, Registered Land Surveyor No. S-1885, hereby certify that the corner location on this record was determined by me or under my direction and control and that this U.S. Public Land Survey Monument Record is correct and complete to the best of my knowledge and belief.



Signature

DEC-9, 2013

Date