

Note to accompany U.S. Public Land
Survey Monument Record 3607350020
(Z – 19)

The location of the S ¼ 35-36-7 as shown on the USPLSS record by Austin dated Sept 7, 2014 indicating coordinates only, have been moved as described on the USPLSS record by Surveyor Uttech and Oestreich dated 6/28/17 – 7/10/17. The coordinates shown on Austin's sheet are for what is now the "Tie" monument as shown on the Uttech – Oestreich record. See Uttech – Oestreich record for explanation and coordinates of the S ¼ corner.

MJR/JWA 7/19/2017

REGISTER OF DEEDS OFFICE
ONEIDA COUNTY
FILED

JUL 21 2017

AT _____ O'CLOCK _____ M
KYLE J. FRANSON
REGISTER OF DEEDS

U.S. PUBLIC LAND SURVEY MONUMENT RECORD

Note: This form is intended an designed to fulfill all requirements of Wisconsin Administrative Code. Chapter A-E 7.08 U.S. Public Land Survey Monument Record (3)(a)(b)(c)(d)(e)(f)(g)(h)(i). An additional sheet may be added to if necessary to conform with said requirements.

(a) Corner Location: Township 36 North
Range 7 East

Woodboro Township

Oneida County, Wisconsin

(83/91) UM-AD

WISCRS (Oneida County)

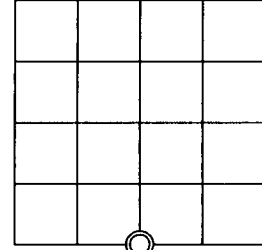
N: 134810.51925 USft

E: 221015.15331 USft

REGISTER OF DEEDS OFFICE
ONEIDA COUNTY
FILED

JUL 11 2017

AT _____ O'CLOCK _____ M
KYLE J. FRANSON
REGISTER OF DEEDS

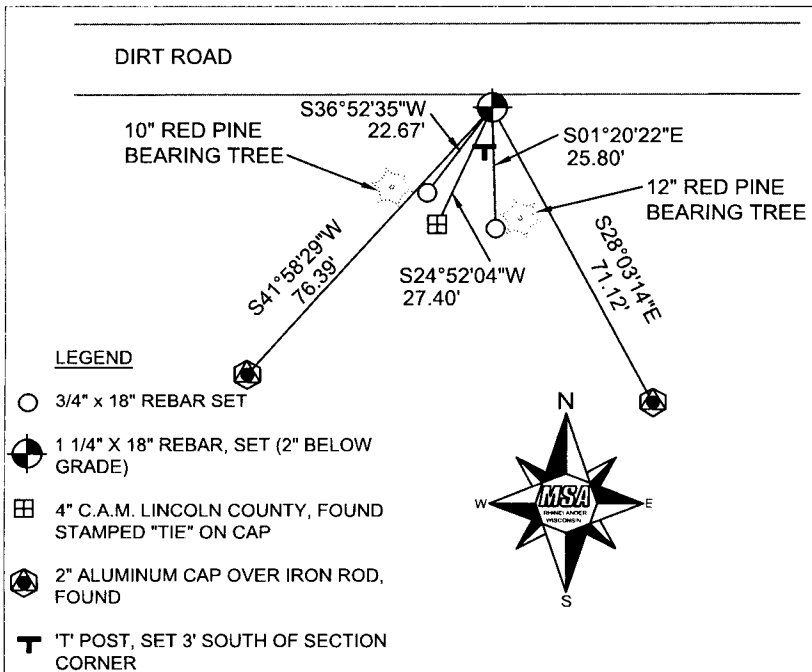


Section 35

(b)(f)(g)(h) Description of monument found at this corner and if it was accepted, state all evidence (material, testimonial, occupational, plats, records, other monuments) used as a basis for accepting. If not accepted or if nothing was found, state evidence used as basis for establishing location. If reestablishment through lost corner proportionate methods, indicate all monuments, distances and directions used to establish. Indicate type of monument found or set and sign post.

Original 1/4 corner set by Alfred Millard in 1860. On October 28, 1891 B.F. Dorr surveyed Section 35, see Old Field Book 22, Page 39, Oneida County Surveyor files. At South 1/4 corner, Dorr referenced "BT.'s lying down". In November, 2003, Dennis Roberts, RLS S-1863 set this corner for Lincoln County Monumentation Project. Dennis noted that he found no evidence of corner and set this corner by proportionate method. He set a Lincoln County Bernsten monument. In November 2006, I found Bernsten Monument set by Dennis. I traversed Section 35 and took measurements to existing evidence. I found called distances by Door agreed well with established corners and existing evidence in Section 35. I previously recalculated the Southeast corner of Section 35 and determined that the South 1/4 corner as set by Dennis Roberts was wrong. At site I could not find any other evidence of corner. I recalculated this 1/4 corners position by single proportionate method. I calculated the 1/4 corners position at straight line, equal distance between the Southeast and Southwest corner of Section 35. I shared this information with the County Surveyors Office. In August, 2009 Michael Oestreich, RLS No. S-2118, used my calculations for this 1/4 corner to do a survey in Section 35. See survey map no. C-2656. Mike had set a 1/2" diameter iron rod at the calculated position. On March 21, 2017, Mike and I revisited this corner. We found 1/2" iron rod in place. Mike verified GPS coordinates. I replaced 1/2" iron rod with a 1 1/4" x 18" iron rod and updated the original ties to Dennis Roberts.

(c)(d)(e) Plan view of corner with ties to at least 4 witness monuments. If in disagreement with previously established corner, show the distances between the two corners and also indicate the ties to the disputed corner.



(i) I, Eugene C. Uttech, Professional Land Surveyor #S-1451, and Michael Oestreich, Professional Land Survey #S-2118, hereby certify that the corner location on this record was determined by me or under my direction and control and that this U.S. Public Land Survey Monument Record is correct and complete to the best of my knowledge and belief.

Eugene C. Uttech
Signature Date 6/28/2017

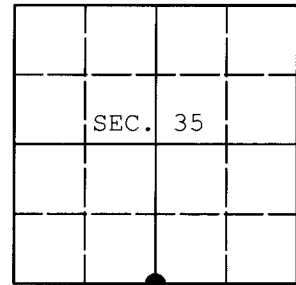
Michael Oestreich
Signature Date 7/10/17

Index No. 3607350020 (219)

U.S. PUBLIC LAND SURVEY MONUMENT RECORD

Note: This form is intended and designed to fulfill all requirements of Wisconsin Administrative Code, Chapter A-E 7.08 U.S. Public Land Survey Monument Record (3) (a) (b) (c) (d) (e) (f) (g) (h) (i). An additional sheet may be added if necessary to conform with said requirements.

(a) CORNER LOCATION: WISCORS (Oneida County)
1/4 Cor. of Secs. 2 & 35 N: 134,785.38 USft
Township 35 & 36 North E: 221,003.66 USft
Range 7 East of the 4th P.M. Datum: NAD 1983(2011)
Town of Woodboro County of Oneida



(b) HISTORY OF ORIGINAL CORNER ESTABLISHMENT

Original Surveyor: Original Accessories:
Date of Survey: Commenced:
Completed:

(b) (f) (g) (h) Description of monument found at this corner and if it was accepted, state all evidence (material, testimonial, occupational, plats, records, other monuments) used as a basis for accepting. If not accepted or if nothing was found, state evidence used as basis for establishing location. If re-established through lost corner proportionate methods, indicate all monuments, distances and directions used to establish. Indicate type of monument and sign post found or set.

NOTE: This is a perpetuation of a previous USPLS Monument Record by Dennis B. Roberts, RLS dated November 4, 2003 and filed in the office of the Lincoln County Surveyor. A complete history of the corner can be found on the previous monument record. I accept the previous location as a true and faithful perpetuation or reestablishment of the original corner location and further perpetuate it as follows.

August 6, 2014: I found and accepted Roberts' monument, a 4" diam. Lincoln Co. Berntsen aluminum monument projecting 3" above the ground. Roberts' accessories were found in substantial agreement with his previous record and were not remeasured as the sole purpose of this work is to report the coordinates of the corner point.

The coordinates shown were derived from a direct static GPS observation referenced to the WISCORS network.

(c) (d) (e) Plan view of corner with ties to at least 4 witness monuments. If in disagreement with previously established corner, show the distances between the two corners and also indicate the ties to the disputed.

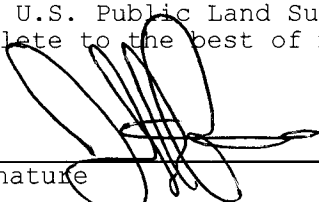
REGISTER OF DEEDS OFFICE
ONEIDA COUNTY
FILED

OCT 13 2014

AT _____ O'CLOCK _____ M
KYLE J. FRANSON
REGISTER OF DEEDS

(i) I, Jeffrey W. Austin, Registered Land Surveyor No. S-1885, hereby certify that the corner location on this record was determined by me or under my direction and control and that this U.S. Public Land Survey Monument Record is correct and complete to the best of my knowledge and belief.




Signature

SEP. 7, 2014
Date