

At _____ O'Clock _____ M
THOMAS H. LEIGHTON
REGISTER OF DEEDS

Recorders Data

This form is intended to fulfill the requirements of Chapter A-E7.08 (3)(a) thru (i) U.S. Public Land Survey Monument Location Record, Wisconsin Administrative Code. Use the reverse side of form for continuation.

U.S. PUBLIC LAND SURVEY MONUMENT LOCATION RECORD

USPLS CORNER: WEST 1/4 SECTION: 36 TOWNSHIP: 36 NORTH RANGE: 7 EAST

NAME OF WATERWAY FOR M.C. CORNER : N/A SECTION LINE: N/A

~~(CITY)(VILLAGE)(TOWN)~~ OF: WOODBORO COUNTY OF: ONEIDA

Description of monument found or placed and all other evidence used as the basis for monument location; including monuments and measurements required if the corner location was reestablished by lost corner proportionate methods. Also indicate name of the original surveyor, original survey date and the corner monument, bearing trees, witness or other reference monuments established, including measured bearing and distance ties, from available survey records.

In June/July 1861, Alfred Millard/GLO set a wood post as original corner and notes OBTs: a 12" Cedar N70°W 12 links and a 12" Cedar N43°E 13 links; all are now obliterated.

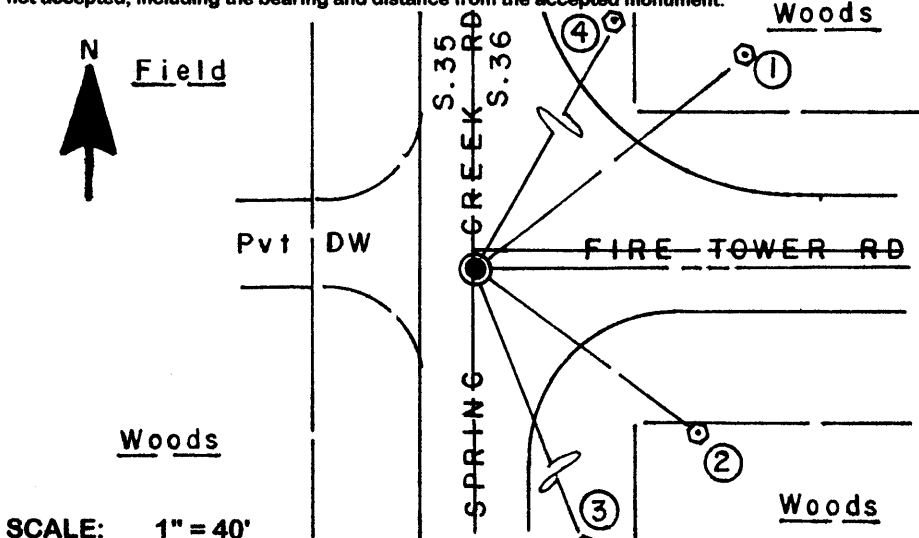
Upon completing a search of Oneida County survey records, I accepted current evidence of this corner as a PK nail in existing blacktop pavement per County Plat of Jenny Creek Pines in November 2004 by Eugene C. Utech/RLS 1451 in Oneida County records.

On June 13, 2006 I found the record PK masonry nail flush in blacktop pavement at this corner. I pulled the 1/4" dia. x 1.25" long PK nail and drove a 1/2" dia. x 4.5" long tapered stainless steel cotton gin pin with geared top flush into hole left by the PK nail for new ties noted below. Corner falls on centerline of N/S blacktop pavement of Spring Creek Road and about 3' South of centerline of blacktop pavement of Fire Tower Road to East.

There were no direct witnesses.

On December 8, 2006, I received a phone call from Surveyor Eugene Utech who advised that my corner pin may have been graded out due to roadway work, so I gave him my newer ties so that he could replace the corner position upon completion of blacktop roadway work. He also had older unrecorded ties to the PK at corner for further verification.

Plan view map of monument location with bearing and distance ties to a minimum of four(4) described witness or reference monuments of concrete, natural stone, iron, live bearing trees or equivalent material. If applicable, also show a minimum of two(2) bearing and distance ties to any other monument found and not accepted; including the bearing and distance from the accepted monument.



WITNESS MONUMENT TIES:

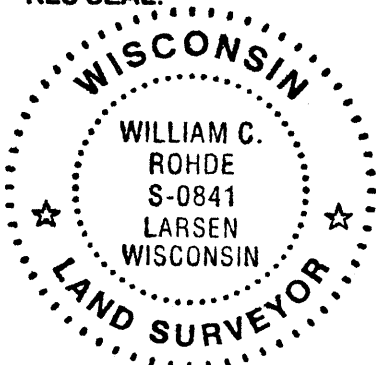
- ① Older 14" Pr BT with upper & lower face blazes open and a 20d spike in left face 30" up; N51°E 71.80' to my PK/washer in right face.
- ② Older 13" Pr BT with upper & lower face blazes open and a 20d spike in right face 20" up; S53°E 57.40' to my PK/washer in right face 14" up.
- ③ New 14" Pr BT S22°E 78.70'.
- ④ New 13" Pr BT N29°E 94.80'.

I painted older BT blazes blaze orange.
No standard 'T' marker post set.

SCALE: 1" = 40'

Unless otherwise indicated, all bearing tree ties are to a .25" dia. by 2.5" long PK nail with a 1.25" dia. steel washer driven into unblazed right face and a .25" dia. by 2.5" long PK nail with a 2" dia. steel washer stamped BT is also driven into unblazed face of bearing tree at DBH; the basis for measured bearings is by compass to nearest degree and all tie distances are measured horizontal by steel tape corrected to nearest 1/100th feet at standard temperature of 68° F.

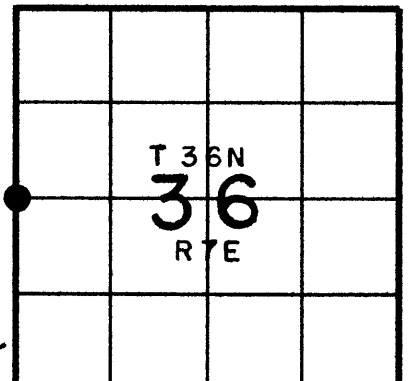
RLS SEAL:



LAND SURVEYOR CERTIFICATE:

I, William C. Rohde, hereby certify that I am duly licensed as a Professional Land Surveyor in the State of Wisconsin; that this USPLS monument location was determined by me and/or under my direct supervision and control; and that this U.S. Public Land Survey Monument Location Record is true and correct to the best of my knowledge and belief.

Signed: *William C. Rohde*
William C. Rohde RLS 841



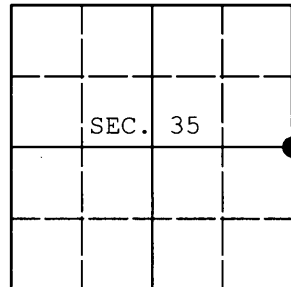
SECTION LOCATION MAP

INDEX NO. X 21
3607352000

U.S. PUBLIC LAND SURVEY MONUMENT RECORD

Note: This form is intended and designed to fulfill all requirements of Wisconsin Administrative Code, Chapter A-E 7.08 U.S. Public Land Survey Monument Record (3) (a) (b) (c) (d) (e) (f) (g) (h) (i). An additional sheet may be added if necessary to conform with said requirements.

(a) CORNER LOCATION: WISCORS (Oneida County)
1/4 Cor. of Secs. 35 & 36 N: 137,464.484 USft
Township 36 North E: 223,649.179 USft
Range 7 East of the 4th P.M. Datum: NAD 1983(2011)
Town of Woodboro County of Oneida



(b) HISTORY OF ORIGINAL CORNER ESTABLISHMENT

Original Surveyor: Original Accessories:
Date of Survey:

(b) (f) (g) (h) Description of monument found at this corner and if it was accepted, state all evidence (material, testimonial, occupational, plats, records, other monuments) used as a basis for accepting. If not accepted or if nothing was found, state evidence used as basis for establishing location. If re-established through lost corner proportionate methods, indicate all monuments, distances and directions used to establish. Indicate type of monument and sign post found or set.

NOTE: This is a perpetuation of a previous USPLS Monument Record by William C. Rohde, RLS dated December 20, 2006 and filed in the office of the Oneida County Register of Deeds. A complete history of the corner can be found on the previous monument record. I accept the previous location as a true and faithful perpetuation or reestablishment of the original corner location and further perpetuate it as follows.

November 1, 2013: I found and accepted Rohde's monument, a PK nail in the pavement of the road intersection. Rohde's accessories were found in substantial agreement with his previous record and were not remeasured as the sole purpose of this work is to report the coordinates of the corner point.

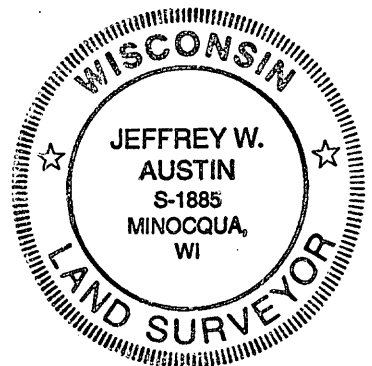
The coordinates shown were derived from a direct RTN GPS observation referenced to the WISCORS network.

(c) (d) (e) Plan view of corner with ties to at least 4 witness monuments. If in disagreement with previously established corner, show the distances between the two corners and also indicate the ties to the disputed.

REGISTER OF DEEDS OFFICE
ONEIDA COUNTY
FILED

DEC 23 2013

AT _____ O'CLOCK _____ M
KYLE J. FRANSON
REGISTER OF DEEDS



(i) I, Jeffrey W. Austin, Registered Land Surveyor No. S-1885, hereby certify that the corner location on this record was determined by me or under my direction and control and that this U.S. Public Land Survey Monument Record is correct and complete to the best of my knowledge and belief.

Signature

Date

DEC. 9, 2013