

# U.S. PUBLIC LAND SURVEY MONUMENT RECORD

Note: This form is intended and designed to fulfill all requirements of Wisconsin Administrative Code, Chapter A-E 5.02, U.S. Public Land Survey Monument Record (3) (a) (b) (c) (d) (e) (f) (g) (h) (i). An additional sheet may be added if necessary to conform with said requirements.

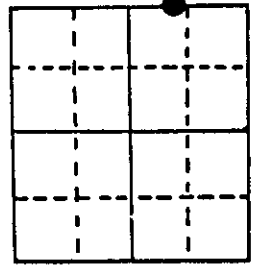
(a) Corner location: Township 36 North

Range 8 East

Town Crescent

County Oneida

East Meander  
Corner on north  
Line of Section  
12



Section 12

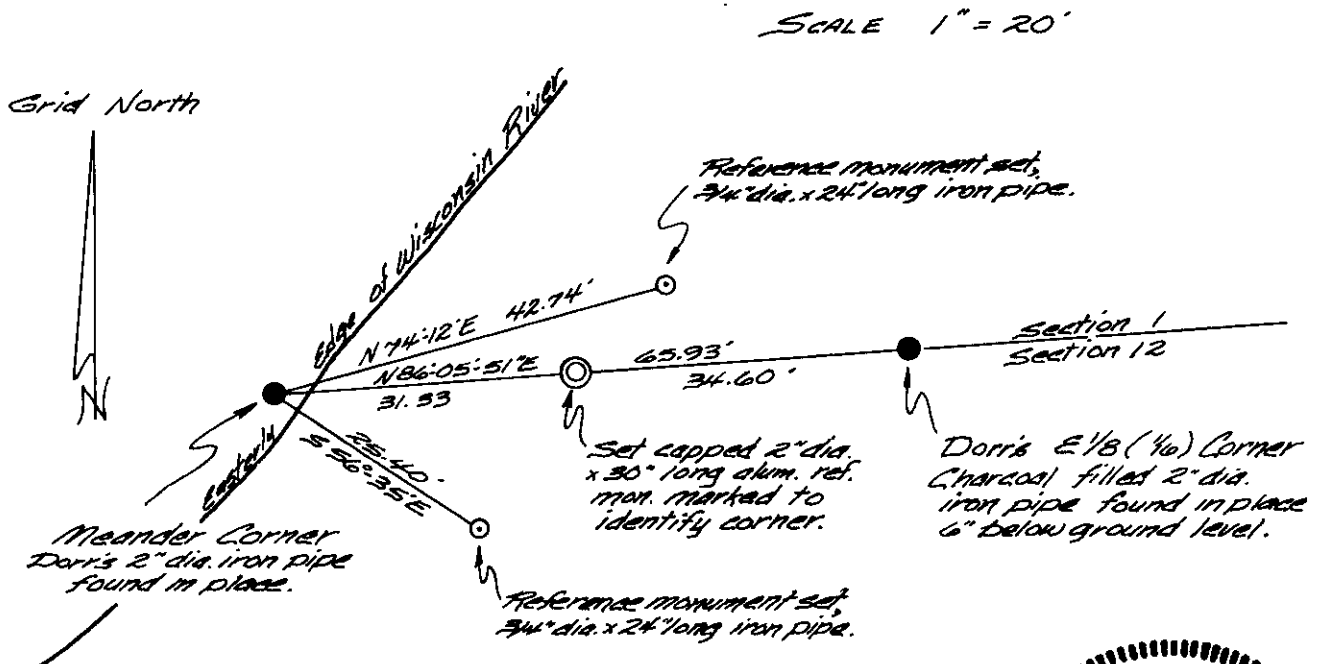
(b) (f) (g) (h) Description of monument found at this corner and if it was accepted, state all evidence (material, testimonial, occupational, plats, records, other monuments) used as a basis for accepting. If not accepted or if nothing was found, state evidence used as basis for establishing location. If reestablished through lost corner proportionate methods, indicate all monuments, distances and directions used to establish.

July 1863 - William E. Daugherty, Deputy Surveyor - Set Meander post  
Original bearing trees: Aspen 10 N58°E, 20 lks; Birch 9 S36°E, 21 lks

May 1902 - B.F. Dorr, Oneida County Surveyor - M.C. 1.00 chain West of E 1/8, Gas pipe 2" with charcoal in it. Norway Stp. 24 N87°E, 19 lks.

August 7th, 1985 - Found Dorr's 2" iron pipe in Wisconsin River bottom in water down 15" and 4 feet from bank. Rotted 24" Pine stump N87°E, 12.3 feet.

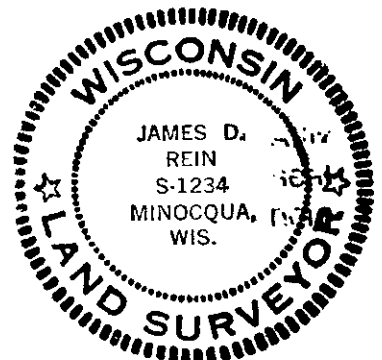
(c) (d) (e) Plan view of corner with ties to at least 4 witness monuments. If in disagreement with previously established corner, show the distances between the two corners and also indicate the ties to the disputed corner.



(i) I, James D. Rein, Reg. Land Surveyor No. S-1234  
(type or print name) certify that the corner location on this record was determined by me or under my direction and control and that this U.S. Public Land Survey Monument Record is correct and complete to the best of my knowledge and belief.

James D. Rein  
Signature

October 19, 1985  
Date



Index No. E-24

3608010012