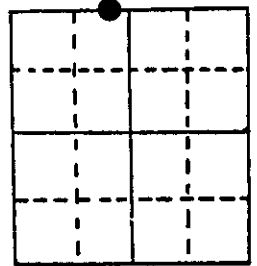


U.S. PUBLIC LAND SURVEY MONUMENT RECORD

Note: This form is intended and designed to fulfill all requirements of Wisconsin Administrative Code, Chapter A-E 5.02, U.S. Public Land Survey Monument Record (3) (a) (b) (c) (d) (e) (f) (g) (h) (i). An additional sheet may be added if necessary to conform with said requirements.

(a) Corner location: Township 36 North
 Range 8 East
 Town Crescent
 County Oneida

West Meander
 Corner on north
 line of Section
 12
 (Right bank of
 Wisconsin River)



Section 12

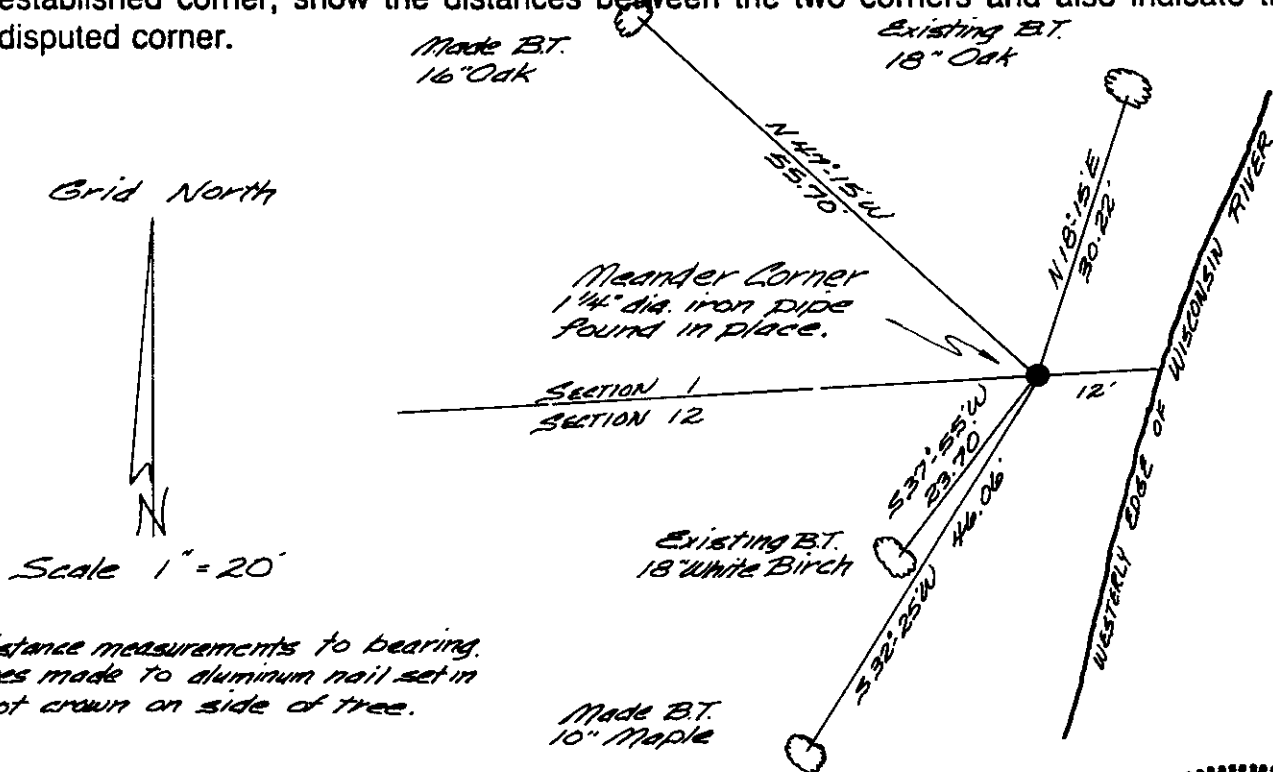
(b) (f) (g) (h) Description of monument found at this corner and if it was accepted, state all evidence (material, testimonial, occupational, plats, records, other monuments) used as a basis for accepting. If not accepted or if nothing was found, state evidence used as basis for establishing location. If reestablished through lost corner proportionate methods, indicate all monuments, distances and directions used to establish.

July 1863 - William E. Daugherty, Deputy Surveyor - Set Meander post Original bearing trees: Maple 6" N10°W, 29 lks.; Elm 10" S50°W, 48 lks.

April 1948 - F. R. Wincentsen, Deputy County Surveyor - From Section Corner N88°-16'E 2158.2 feet right bank of Wisconsin River, iron pipe found D. H. Vaughan's Ash B.T.
 B.T.s Birch 14 S49°W 23.76 feet; Oak 10" N19°E 29.7 feet.

August 7, 1985 - Found 1 1/4" dia. iron pipe extending 6" above ground level and 12 feet from the westerly edge of the Wisconsin River. A metal R/W post witnesses corner monument.
 Existing B.T.s: 18" Oak N18°-15'E, 30.22 feet
 18" White Birch S37°-55'W, 23.70 feet

(c) (d) (e) Plan view of corner with ties to at least 4 witness monuments. If in disagreement with previously established corner, show the distances between the two corners and also indicate the ties to the disputed corner.



Distance measurements to bearing trees made to aluminum nail set in root crown on side of tree.

(i) I, James D. Rein, Reg. Land Surveyor No. S-1234
 (type or print name) certify that the corner location on this record was determined by me or under my direction and control and that this U.S. Public Land Survey Monument Record is correct and complete to the best of my knowledge and belief.

James D. Rein
 Signature

October 19, 1985
 Date



Index No. E-23

3608010023