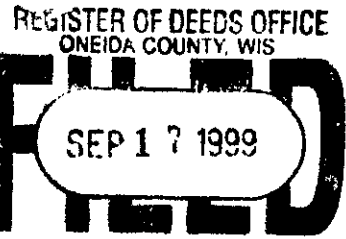


This form is intended to fulfill the requirements of Chapter A-E 7.08 (3)(a) thru (l) U.S. Public Land Survey Monument Location Record, Wisconsin Administrative Code. Use the reverse side of form for continuation.



U.S. PUBLIC LAND SURVEY MONUMENT LOCATION RECORD

USPLS CORNER: West 1/4 Corner SECTION: 6 TOWNSHIP: 36 NORTH RANGE: 9 East
 NAME OF WATERWAY FOR M.C. CORNER: N/A SECTION LINE: N/A
 (CITY)(VILLAGE)(TOWN) OF: City of Rhinelander COUNTY OF: Oneida

Description of monument found or placed and all other evidence used as the basis for monument location; including monuments and related measurements required if the corner location was reestablished by lost corner proportionate methods. Also indicate name of original surveyor, original survey date and the corner monument, bearing trees, witness or other reference monuments established; including measured bearing and distance ties, from available records.

Found and accepted center of a small chiseled cross-cut in a shallow depression at top of SW edge of large 4' wide by 8' long rock boulder 5'+ above nearby roadway surface. Using a cordless drill with concrete bit, I drilled a 1/2" dia. by 1/2" deep drill hole at the center of the chiseled cross cut and marked it with an orange paint keel cross on boulder surface and set a standard white poly 'T' marker post S75°W 1.7 between boulder and East edge of existing blacktop roadway mat at bottom edge of steep roadway cut bank up to sloping level of adjoining unimproved city lot East of the boulder.

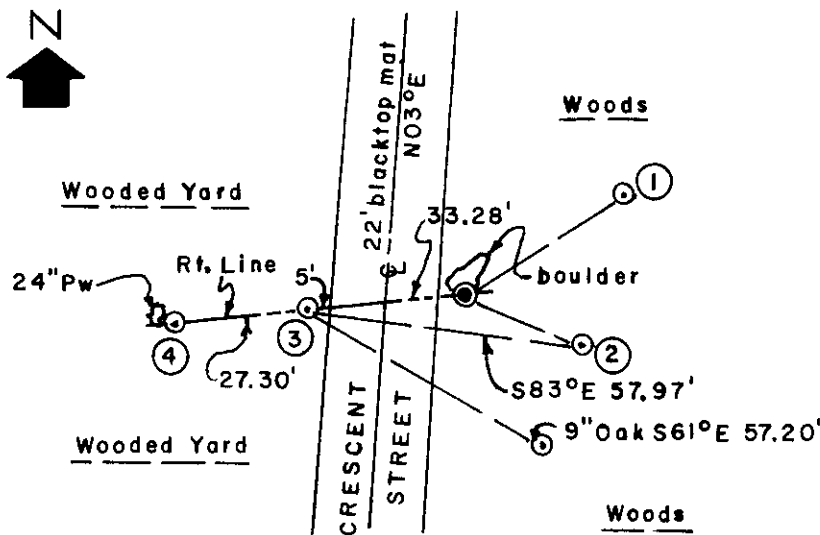
In 1860, Alfred Millard/GLO set a wood post as the original corner and marked OBTs: a 9" Bw N81°E 4 links and a 10" Aspen S82°W 19 links, which are all now obliterated.

In 1908, Dorr & Williams define the west 1/4 corner as a cross-cut near west edge of a 4' x 4' boulder, per certificate on the Plat of Hillside Addition, filed as Sheet 88 in Cabinet 1 at the Oneida County Register of Deeds office.

In 1981, W. Immich "found chiseled 'X' on boulder in place", per map legend on Assessor's Plat 1, filed as Sheet 102 in Cabinet 1 at the Oneida County Register of Deeds office.

This recovery completed August 25, 1999; there were no direct witnesses other than vehicle drive-bys.

Plan view map of monument location with bearing and distance ties to a minimum of four(4) described witness or reference monuments of concrete, natural stone, iron, live bearing trees or equivalent material. If applicable, also show a minimum of two(2) bearing and distance ties to any other monument found and not accepted; including the bearing and distance from the accepted monument.



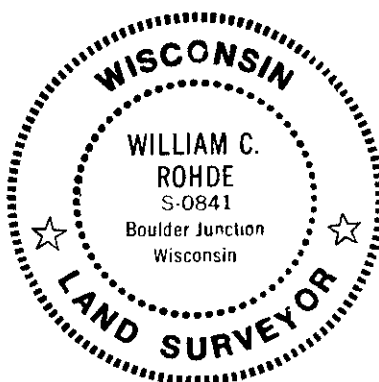
WITNESS MONUMENT TIES:

- ① New BT 11" Or N57°E 40.10'.
- ② New BT 7" Pw S68°E 26.50'.
- ③ Old 2" dia. iron pipe found 3"+ below grade, set an 8" long spike in top center, S85°W 33.28'.
- ④ Set a 1" dia. by 24" long iron pipe with standard Reference Mark cap flush with grade, on a right line from the corner thru Witness Monument 3, S85°W 60.58'.

SCALE: 1" = 40'

Unless otherwise indicated, all bearing tree ties are to a .25" dia. by 2.5" long PK nail with a 1.25" dia. steel washer driven into unblazed right face and a .25" dia. by 2.5" long PK nail with a 2" dia. steel washer stamped BT is also driven into unblazed face of bearing tree at DBH; the basis for measured bearings is by compass to nearest degree and all tie distances are measured horizontal by steel tape corrected to nearest 1/100th feet at standard temperature of 68° F.

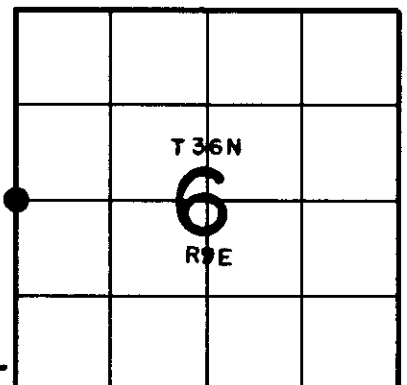
RLS SEAL:



LAND SURVEYOR CERTIFICATE:

I, William C. Rohde, hereby certify that I am duly licensed as a Professional Land Surveyor in the State of Wisconsin; that this USPLS monument location was determined by me and/or under my direct supervision and control; and that this U.S. Public Land Survey Monument Location Record is true and correct to the best of my knowledge and belief.

Signed: *William C. Rohde*
 William C. Rohde RLS 841



SECTION LOCATION MAP
 INDEX NO. C 1

Date Signed: September 6, 1999

3608012000