

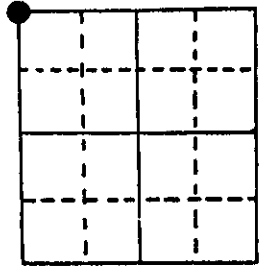
U.S. PUBLIC LAND SURVEY MONUMENT RECORD

Note: This form is intended and designed to fulfill all requirements of Wisconsin Administrative Code, Chapter A-E 5.02, U.S. Public Land Survey Monument Record (3) (a) (b) (c) (d) (e) (f) (g) (h) (i). An additional sheet may be added if necessary to conform with said requirements.

(a) Corner location: Township 36 North

Northwest Corner
of Section 12

Range 8 East



Section 12

Town Crescent

County Oneida

(b) (f) (g) (h) Description of monument found at this corner and if it was accepted, state all evidence (material, testimonial, occupational, plats, records, other monuments) used as a basis for accepting. If not accepted or if nothing was found, state evidence used as basis for establishing location. If reestablished through lost corner proportionate methods, indicate all monuments, distances and directions used to establish.

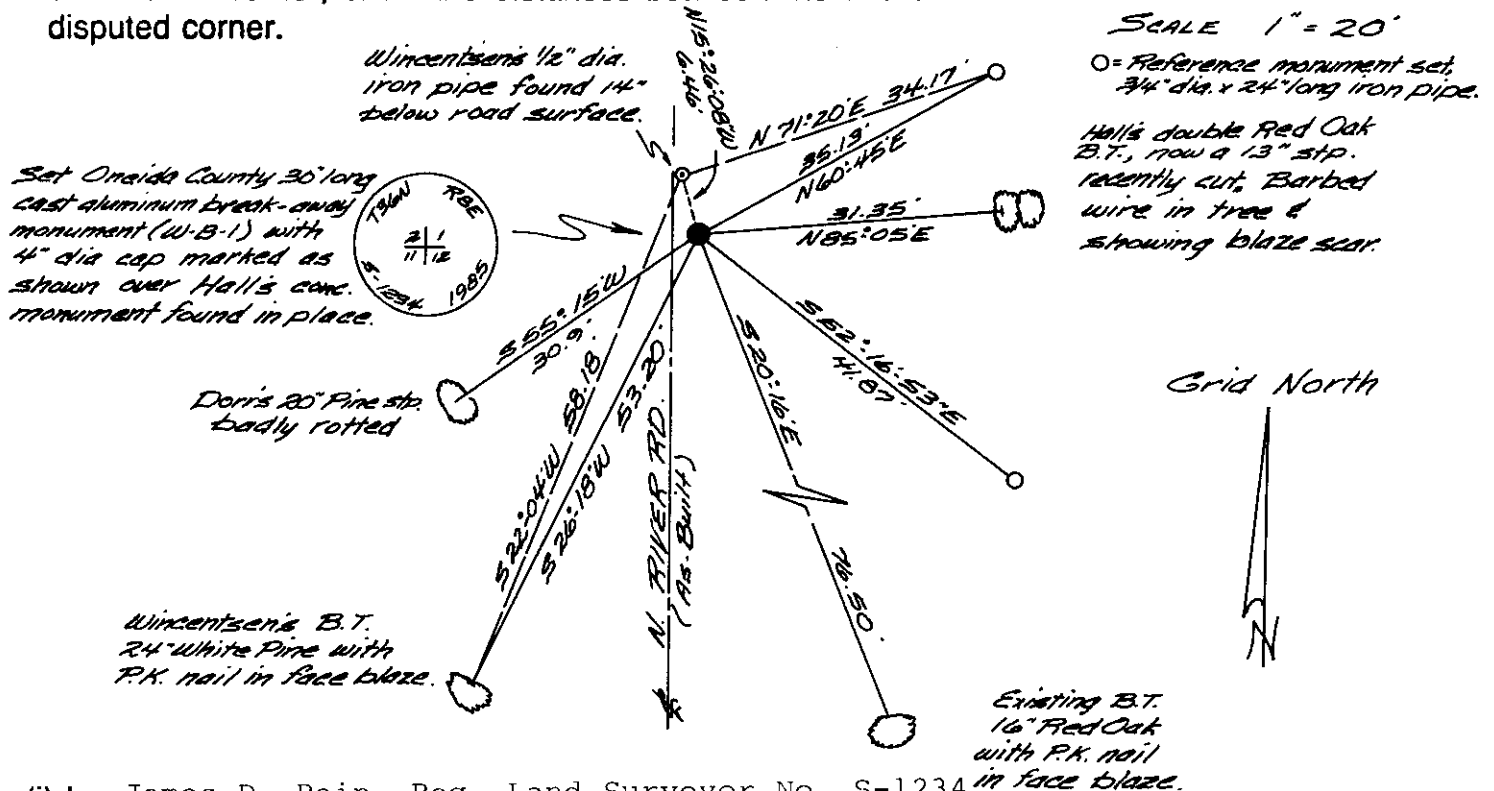
July 1863 - William E. Daugherty, Deputy Surveyor - Set post. Original bearing trees:
Birch 8" S80°W, 11 lks.; Birch 8" N14°E, 7 lks.

May 1895 - B. F. Dorr, Oneida County Surveyor - (Sec 12) N.W. Corner New Pine 20"
S58°W, 46.5 lks.

October 29, 1931 - H. C. Hall, Oneida County Surveyor - (Sec 2) - Original S.E. in centerline of River Road. H. C. identifies rotted stp as Dorr's bearing. N58°E, 46.5 feet from stp falls in centerline road and in line of old fence E. and 6 feet S. of fence Wly. Bury concrete monument 6" x 6" x 36" with cross on top 8" below road surface. Dorr's stp S57°50'W, .465 ch.; New B. Oak 8" (double) N87°E, .468 ch.; Drive hubs West .20 ch. & East .20 ch.

April 1948 - F. R. Wincentzen, Deputy County Surveyor - N0°-39'W, 2836.68 feet from
(continued on back)

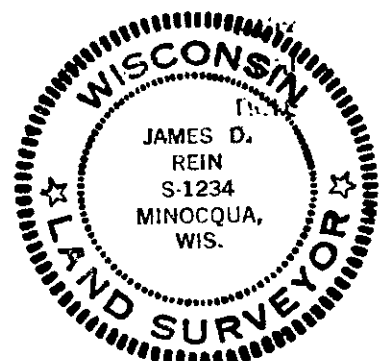
(c) (d) (e) Plan view of corner with ties to at least 4 witness monuments. If in disagreement with previously established corner, show the distances between the two corners and also indicate the ties to the disputed corner.



(i) I, James D. Rein, Reg. Land Surveyor No. S-1234
(type or print name) certify that the corner location on this record was determined by me or under my direction and control and that this U.S. Public Land Survey Monument Record is correct and complete to the best of my knowledge and belief.

James D. Rein
Signature

October 19, 1985
Date



Index No. E-21

3608020000

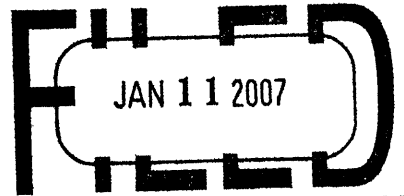
Stock No. 26273

(continued)

W 1/4 Corner - on centerline road Sec. Corner common to Sections 1, 2, 11, and 12 iron pipe on road - B.T.s W. Pine 18" S20°W, 58.4 feet; Oak 8" N51°E, 28 feet.

August 5, 1985 - Found Hall's 6" x 6" Concrete monument for corner, top broken off, remaining part of monument is firm, 32" below surface of existing road bed ±3 feet east of as-build centerline Wincentzen's 1/2" dia. iron pipe bears N15°-26'-08"W, 6.46 feet. I accept Hall's corner position.

REGISTER OF DEEDS OFFICE
ONEIDA COUNTY, WIS.
JUN 11 1986
A... 8:18... O'clock... P... M
CHRIS VERAGE KUETHN
REGISTER OF DEEDS



This form is intended to fulfill the requirements of Chapter A-E7.08 (3)(a) thru (i) U.S. Public Land Survey Monument Location Record, Wisconsin Administrative Code. Use the reverse side of form for continuation.

At _____ O'Clock _____ M
THOMAS H. LEIGHTON
REGISTER OF DEEDS
Recorders Data

U.S. PUBLIC LAND SURVEY MONUMENT LOCATION RECORD

USPLS CORNER: NW SECTION: 12 TOWNSHIP: 36 NORTH RANGE: 08 EAST

NAME OF WATERWAY FOR M.C. CORNER : N/A SECTION LINE: N/A

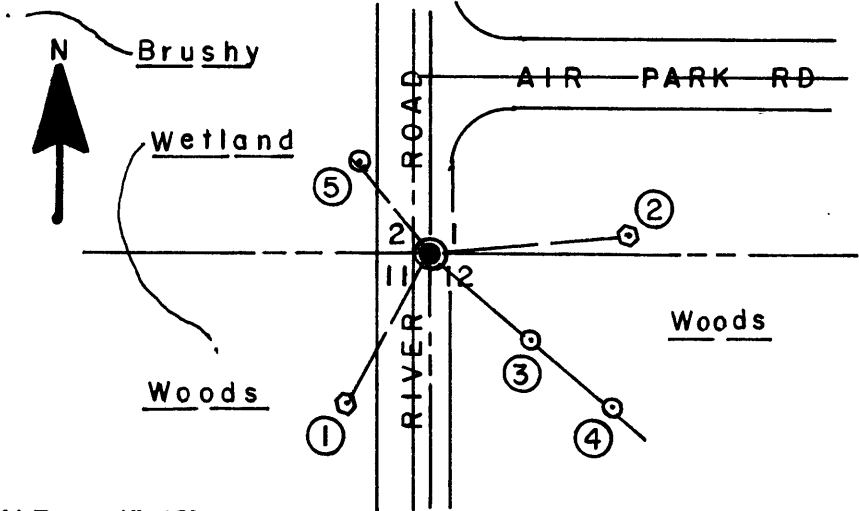
~~(CITY)(VILLAGE)(TOWN)~~ OF: CRESCENT COUNTY OF: ONEIDA

Description of monument found or placed and all other evidence used as the basis for monument location; including monuments and measurements required if the corner location was reestablished by lost corner proportionate methods. Also indicate name of the original surveyor, original survey date and the corner monument, bearing trees, witness or other reference monuments established, including measured bearing and distance ties, from available survey records.

THIS CORNER REREFERENCED AS ONLY TWO(2) RECORD WITNESSES SATISFACTORY FOR PERPETUATION USAGE. See U.S. Public Land Survey Monument Location Record dated October 19, 1985 as filed by James D. Rein/RLS 1234 in Oneida County records, for previous history. The iron pipe reference monument noted N71°20'E 34.17' is now gone; undoubtedly in a shallow ditch graded since. The double Or BT noted N31°05'E 31.35' is now gone due to roadside clearing for OH power line. The 16" Or BT noted S20°16'E 76.50' is now gone also due to roadside clearing for OH power line. The 20" Pine stump noted S55°15'W 30.9' was not found as it would now be in roadway shoulder; however, the center of an old pine stump was found S47°W 37.5'. The iron pipe reference monument noted S52°16'53"E 41.87' was found undisturbed as an uncapped 3/4" dia. iron pipe 1" below grade per record ties from old PK nail at corner in blacktop pavement. The 24" Pw BT noted S26°18'W 53.20' was also found with a PK nail in lower open face blaze per record ties; and I nailed a standard BT sign to upper face of the BT.

I found an older rusty PK nail flush in existing blacktop at this corner per remaining record ties. I pulled the 3/16" dia. x 1" long PK nail and drove a 1/2" dia. x 4.5" long tapered stainless steel cotton gin pin with geared top flush with blacktop pavement into the hole left by the old PK nail for new ties noted below. Prior to driving the pin, the noted Oneida County cast aluminum monument at the corner could not be detected with magnetic locator nor the Wincentsen iron pipe noted N15°26'08"W 6.46' below existing blacktop pavement. This recovery completed June 14, 2006; there were no direct witnesses. No standard white poly 'T' marker post found or set.

Plan view map of monument location with bearing and distance ties to a minimum of four(4) described witness or reference monuments of concrete, natural stone, iron, live bearing trees or equivalent material. If applicable, also show a minimum of two(2) bearing and distance ties to any other monument found and not accepted; including the bearing and distance from the accepted monument.



WITNESS MONUMENT TIES:

- ① Old 24" Pw BT S28°W 53.36' to my PK nail/washer in right face.
- ② New 20" Or BT N84°E 62.69'.
- ③ Record 3/4" iron pipe found at S50°E 41.87'; I set a yellow poly Reference Mark cap in pipe top.
- ④ 5/8" dia. x 24" long rebar set 1" up with yellow poly Reference Mark cap S50°E 75.02' on line thru #3 Witness to pin at corner.
- ⑤ Center of water hydrant valve stem N39°W 37.46'.

SCALE: 1"=60'

Unless otherwise indicated, all bearing tree ties are to a .25" dia. by 2.5" long PK nail with a 1.25" dia. steel washer driven into unblazed right face and a .25" dia. by 2.5" long PK nail with a 2" dia. steel washer stamped BT is also driven into unblazed face of bearing tree at DBH; the basis for measured bearings is by compass to nearest degree and all tie distances are measured horizontal by steel tape corrected to nearest 1/100th feet at standard temperature of 68° F.

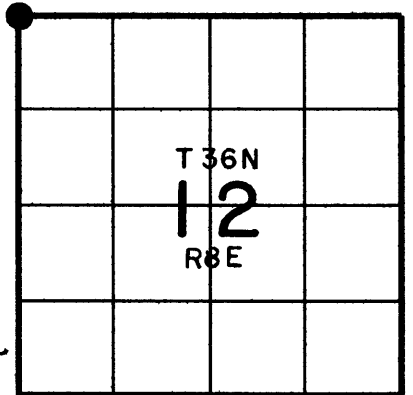
RLS SEAL:



LAND SURVEYOR CERTIFICATE:

I, William C. Rohde, hereby certify that I am duly licensed as a Professional Land Surveyor in the State of Wisconsin; that this USPLS monument location was determined by me and/or under my direct supervision and control; and that this U.S. Public Land Survey Monument Location Record is true and correct to the best of my knowledge and belief.

Signed: *William C. Rohde*
William C. Rohde RLS 841



SECTION LOCATION MAP

INDEX NO. E 21

3608020000