

At _____ O'Clock _____ M
THOMAS H. LEIGHTON
REGISTER OF DEEDS
Recorders Data

This form is intended to fulfill the requirements of Chapter A-E7.08 (3)(a) thru (i) U.S. Public Land Survey Monument Location Record, Wisconsin Administrative Code. Use the reverse side of form for continuation.

U.S. PUBLIC LAND SURVEY MONUMENT LOCATION RECORD

USPLS CORNER: EAST WITNESS MC SECTION: 11 TOWNSHIP: 36 NORTH RANGE: 08 EAST

NAME OF WATERWAY FOR M.C. CORNER: NORTH TWIN LAKE SECTION LINE: NORTH

(CITY)(VILLAGE)(TOWN) OF: CRESCENT COUNTY OF: ONEIDA

Description of monument found or placed and all other evidence used as the basis for monument location; including monuments and measurements required if the corner location was reestablished by lost corner proportionate methods. Also indicate name of the original surveyor, original survey date and the corner monument, bearing trees, witness or other reference monuments established, including measured bearing and distance ties, from available survey records.

In July 1863, William E. Daugherty/GLO set a wood post as the original MC and noted OBTs: a 16" Pw S12°E 13 links and a 7" Bw N37°E (N57°E?) 26 links; all are now obliterated.

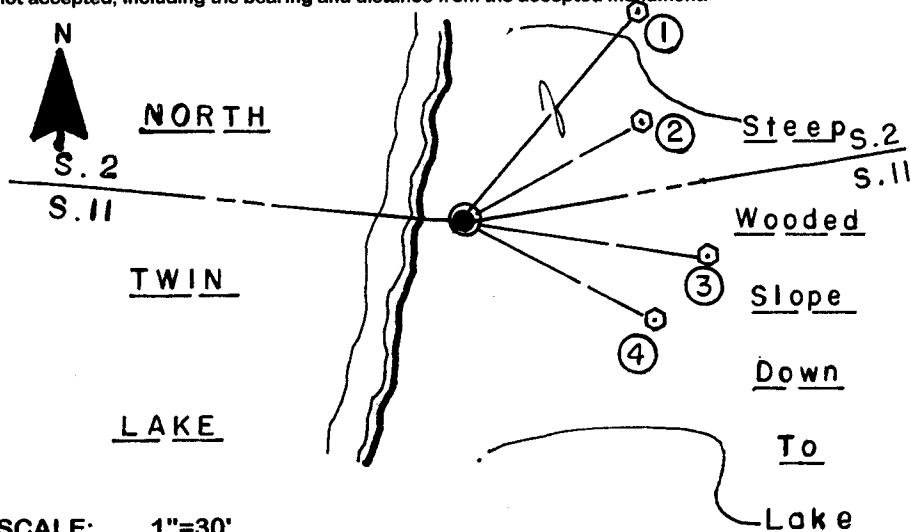
On October 29, 1931, Harold C. Hall set a 6"x6"x36" concrete monument with 8" exposed and .14 chains from lakeshore at original GLO MC location, monument now gone, and noted BT's: Original GLO BT stump S12°E .13 chains, now gone; a 16" Pw N11°35'E 1.236 chains, now gone; and a 20" Pw S23.5°E .258 chains, also now gone.

In May of 2004, Anthony R. Jones/RLS 2508 notes a 3/4" dia. iron rod found as the MC per legend symbol on his Plat of Survey filed as C-2057 in Oneida County survey records.

On June 15, 2006 I found a 5/8" dia. rebar with red poly cap stamped BH Assoc. Inc. flush in bottom of a 15"+/- square ground depression; undoubtedly from previous digging by shovel. Also found a 2" wide 'U' channel steel post with a 4" x 12" white sign at top stenciled "Airport Property" 14" East of the rebar monument and I found a standard white poly 'T' marker post nearby which I pulled and drove along East side of the 'U' channel marker post.

I left the capped rebar in place as this witness MC and drove a standard 2" dia. x 30" long aluminum pipe monument with stamped Oneida County cap over the rebar to 9" above grade for new ties noted below, and also placed nearby rocks around the base of the monument as a protective cairn. There were no direct witnesses.

Plan view map of monument location with bearing and distance ties to a minimum of four(4) described witness or reference monuments of concrete, natural stone, iron, live bearing trees or equivalent material. If applicable, also show a minimum of two(2) bearing and distance ties to any other monument found and not accepted; including the bearing and distance from the accepted monument.



WITNESS MONUMENT TIES:

- ① New 7" Oak BT N40°E 49.70'.
- ② New 4" Bw BT N60°E 31.81'.
- ③ New 7" Oak BT S82°E 38.50'.
- ④ New 5.5" Oak BT S63°E 33.66'.

Note: Corner falls about 6.5' East of existing lakeshore bearing S10°W.

SCALE: 1"=30'

Unless otherwise indicated, all bearing tree ties are to a .25" dia. by 2.5" long PK nail with a 1.25" dia. steel washer driven into unblazed right face and a .25" dia. by 2.5" long PK nail with a 2" dia. steel washer stamped BT is also driven into unblazed face of bearing tree at DBH; the basis for measured bearings is by compass to nearest degree and all tie distances are measured horizontal by steel tape corrected to nearest 1/100th feet at standard temperature of 68° F.

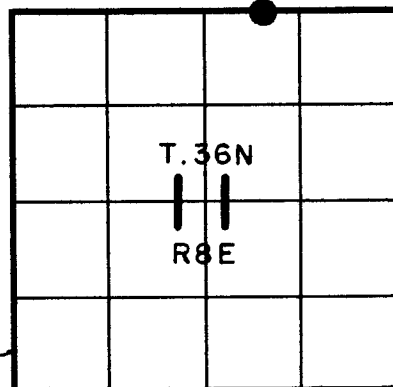
RLS SEAL:



LAND SURVEYOR CERTIFICATE:

I, William C. Rohde, hereby certify that I am duly licensed as a Professional Land Surveyor in the State of Wisconsin; that this USPLS monument location was determined by me and/or under my direct supervision and control; and that this U.S. Public Land Survey Monument Location Record is true and correct to the best of my knowledge and belief.

Signed: *William C. Rohde*
William C. Rohde RLS 841



SECTION LOCATION MAP
INDEX NO. E 20-21

3608020008
0011

U.S. PUBLIC LAND SURVEY MONUMENT RECORD

REGISTER OF DEEDS OFFICE
ONEIDA COUNTY
FILED

SEP 08 2020

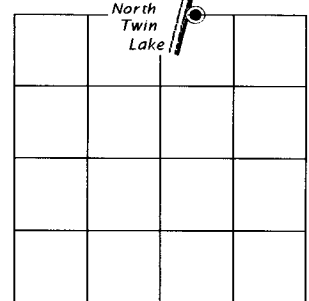
Note: This form is intended and designed to fulfill all requirements of the Wisconsin Administrative Code, Chapter A-E 7.08 U.S. Public Land Monument Record (3)(a)(b)(c)(d)(e)(f)(g)(h)(i). An additional sheet may be added if necessary to conform with said requirements.

KYLE J. FRANSON
REGISTER OF DEEDS

(a) CORNER LOCATION: WISCRS - Oneida County
 Meander Corner of Section 11 North: 160878.395 USft
 Township 36 North East: 252719.631 USft
 Range 8 East Datum: NAD 83(2011)
 City of Rhinelander GNSS Method: RTK - Direct
 County of Oneida GNSS Control: WISCORS VRS

(RECORDING AREA)

SECTION 11



(b) HISTORY OF ORIGINAL CORNER ESTABLISHMENT

Original Surveyor:
 Date of Survey: Commenced
 Completed
 Original B.T.'S

SEE PREVIOUS U.S.P.L.S. MONUMENT
 RECORD DATED DECEMBER 20, 2006.

(f)(g)(h) DESCRIPTION OF MONUMENT FOUND AT THIS CORNER AND IF IT WAS ACCEPTED, STATE ALL EVIDENCE (MATERIAL, TESTIMONIAL, OCCUPATIONAL, PLATS, RECORD, OTHER MONUMENTS) USED AS A BASIS FOR ESTABLISHING LOCATION. IF NOT ACCEPTED OR IF NOTHING WAS FOUND, STATE EVIDENCE USED AS BASIS FOR ESTABLISHING LOCATION. IF REESTABLISHED THROUGH LOST CORNER PROPORTIONATE METHODS, INDICATE ALL MONUMENTS, DISTANCES AND DIRECTIONS USED TO ESTABLISH. INDICATE TYPE OF MONUMENT AND SIGN POST FOUND OR SET.

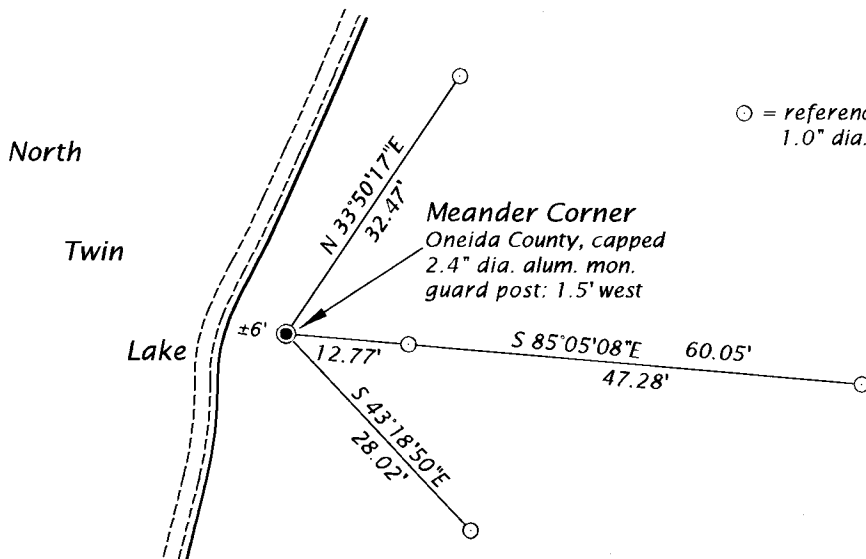
This is a perpetuation of a previous U.S.P.L.S. Monument Record by William C. Rohde, RLS, dated December 20, 2006, and filed in the office of the Oneida County Register of Deeds. A complete history of the corner can be found on the previous monument record. I accept the previous location as a true and faithful perpetuation or reestablishment of the original corner location and further perpetuate it as follows.

June 15, 2020, James D. Rein, P.L.S. No. S-1234, we found, and I accepted the Oneida County, capped, 2.4" dia. aluminum monument Rohde set in 2006. The previous bearing trees were not recovered. We set four reference iron pipes - see below for updated reference ties.

The coordinate value shown has been verified by at least one of the following methods: 1) comparison to a previously GPS determined published value; 2) the value is the average of two or more GPS observations at a markedly different time; 3) one or more distances were measured back to the GPS observed corner from temporary GPS observed offset locations.

(c)(d)(e) PLAN VIEW OF CORNER WITH TIES TO AT LEAST 4 WITNESS MONUMENTS. IF IN DISAGREEMENT WITH PREVIOUSLY ESTABLISHED CORNER, SHOW THE DISTANCE BETWEEN THE TWO CORNERS AND ALSO INDICATE THE TIES TO THE DISPUTED CORNER.

Bearings are
Oneida County Grid



Scale: 1" = 20'

(i) I, JAMES D. REIN, PROFESSIONAL LAND SURVEYOR NO. S-1234 HEREBY CERTIFY THAT THE CORNER LOCATION ON THIS RECORD WAS DETERMINED BY ME OR UNDER MY DIRECTION AND CONTROL AND THAT THIS U.S. PUBLIC LAND SURVEY MONUMENT RECORD IS CORRECT AND COMPLETE TO THE BEST OF MY KNOWLEDGE AND BELIEF.



[Signature]
 SIGNATURE
 7/10/20
 DATE

E 20-21
 INDEX NO. ~~6-21~~
 3608112000
 020011