

At _____ O'Clock _____ M
THOMAS H. LEIGHTON
REGISTER OF DEEDS

Recorders Data

This form is intended to fulfill the requirements of Chapter A-E7.08 (3)(a) thru (i) U.S. Public Land Survey Monument Location Record, Wisconsin Administrative Code. Use the reverse side of form for continuation.

U.S. PUBLIC LAND SURVEY MONUMENT LOCATION RECORD

USPLS CORNER: WEST WITNESS MC SECTION: 11 TOWNSHIP: 36 NORTH RANGE: 08 EAST

NAME OF WATERWAY FOR M.C. CORNER : NORTH TWIN LAKE SECTION LINE: NORTH

~~(CITY)(VILLAGE)(TOWN)~~ OF: CRESCENT COUNTY OF: ONEIDA

Description of monument found or placed and all other evidence used as the basis for monument location; including monuments and measurements required if the corner location was reestablished by lost corner proportionate methods. Also indicate name of the original surveyor, original survey date and the corner monument, bearing trees, witness or other reference monuments established, including measured bearing and distance ties, from available survey records.

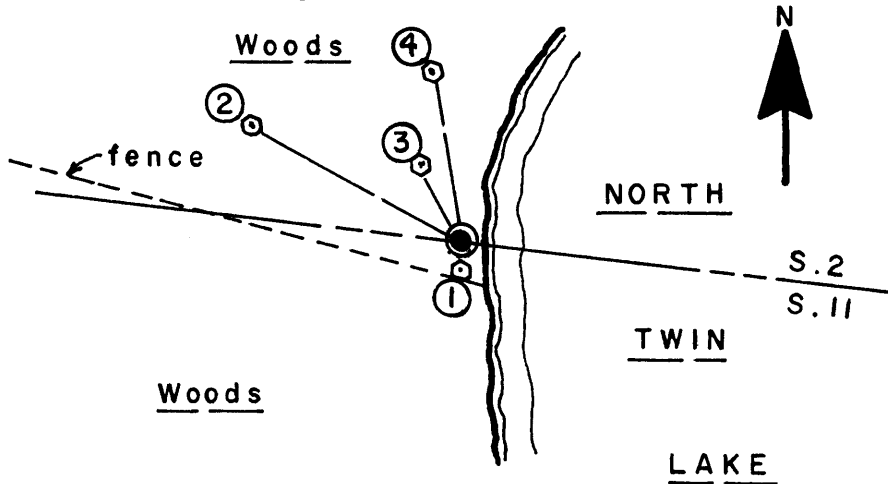
In July 1863, William E. Daugherty/GLO set a wood post as the original meander corner and noted OBTs: an 8" Bw N53°W 17 links and a 20" Pw S24°W 32 links; all are now obliterated.

On October 29, 1931, Harold C. Hall set an anchored iron pipe with top 8" above grade as this witness MC, on a line from original MC on the East shore of North Twin Lake to the North 1/4 corner of Section 11, and noted BTs: a 12" Pw stump N10°30'E .597 chains, now gone; cross cut on a boulder N61°W .562 chains, found OK, which I rechiseled and marked with orange paint keel; and that a crooked fence led North 0.85 chains, now gone.

On June 14, 2006 I found an old rusted 1.5" dia. iron pipe with uncapped top 8" above grade at this witness MC, which checked within 0.10' of the record tie distance from cross cut in large boulder found NW of the corner per Hall's notes. so I drove a standard 2" dia. x 30" long aluminum pipe monument with stamped Oneida County cap over the old iron pipe to 10" above grade for new ties.

Corner falls at toe of steep bank up to NW and 3' West of existing lakeshore bearing N/S this date; an older wood picketed snow fence leads N75°W from the lakeshore about 6' South of the corner; I set an 8"x9"x6" rock at grade on the West side of new monument and flagged the monument, BTs and a standard white poly 'T' marker post set 14" East of the corner monument. There were no direct witnesses. See plat of survey by Anthony R. Jones/RLS 2508 in May 2004 filed as C-2057 in Oneida County survey records.

Plan view map of monument location with bearing and distance ties to a minimum of four(4) described witness or reference monuments of concrete, natural stone, iron, live bearing trees or equivalent material. If applicable, also show a minimum of two(2) bearing and distance ties to any other monument found and not accepted; including the bearing and distance from the accepted monument.



WITNESS MONUMENT TIES:

- ① New NW 12" trunk of double Mr BT South 4.73'.
- ② Record cross cut in top of 2'x3' boulder N62°W 37.20'; recorded as N61°40'W .562 chains(37.09').
- ③ New cross cut in top of 16" x 20" boulder and painted with orange keel, N29°W 13.35'.
- ④ New 6" Mr BT N11°W 26.72'.

SCALE: 1" = 30'

Unless otherwise indicated, all bearing tree ties are to a .25" dia. by 2.5" long PK nail with a 1.25" dia. steel washer driven into unblazed right face and a .25" dia. by 2.5" long PK nail with a 2" dia. steel washer stamped BT is also driven into unblazed face of bearing tree at DBH; the basis for measured bearings is by compass to nearest degree and all tie distances are measured horizontal by steel tape corrected to nearest 1/100th feet at standard temperature of 68° F.

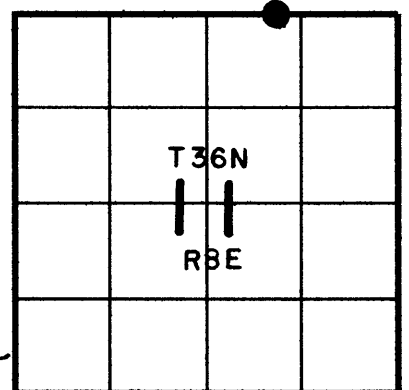
RLS SEAL:



LAND SURVEYOR CERTIFICATE:

I, William C. Rohde, hereby certify that I am duly licensed as a Professional Land Surveyor in the State of Wisconsin; that this USPLS monument location was determined by me and/or under my direct supervision and control; and that this U.S. Public Land Survey Monument Location Record is true and correct to the best of my knowledge and belief.

Signed: *William C. Rohde*
William C. Rohde RLS 841



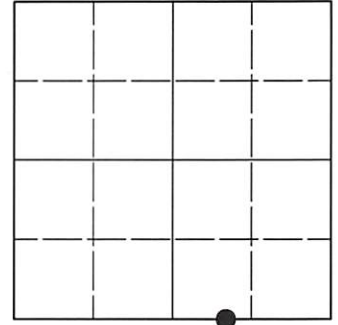
SECTION LOCATION MAP
INDEX NO. E 19-20
3608020013

U.S. PUBLIC LAND SURVEY MONUMENT RECORD

Note: This form is intended and designed to fulfill all requirements of Wisconsin Administrative Code, Chapter A-E 7.08 U.S. Public Land Survey Monument Record (3)(a-i).

(a) CORNER LOCATION
 Wit. Meander Cor. of Secs. 2 & 11
 Township 36 North
 Range 8 East of the 4th P.M.
 Town of Crescent
 County of Oneida

WISCRS - Oneida County
 N: 160,928.34 USft
 E: 252,252.57 USft
 Datum: NAD 83(2011) ep. 2010.00
 GNSS Method: RTN - Offset
 GNSS Control: WISCORS VRS



WCMC
 Sec. 2, T. 36 N., R. 8 E.

(b)(f)(g)(h) Description of monument found at this corner and if it was accepted, state all evidence (material, testimonial, occupational, plats, records, other monuments) used as a basis for accepting. If not accepted or if nothing was found, state evidence used as basis for establishing location. If re-established through lost corner proportionate methods, indicate all monuments, distances and directions used to establish. Indicate type of monument and sign post found or set.

This record is a perpetuation of the following land corner document(s):

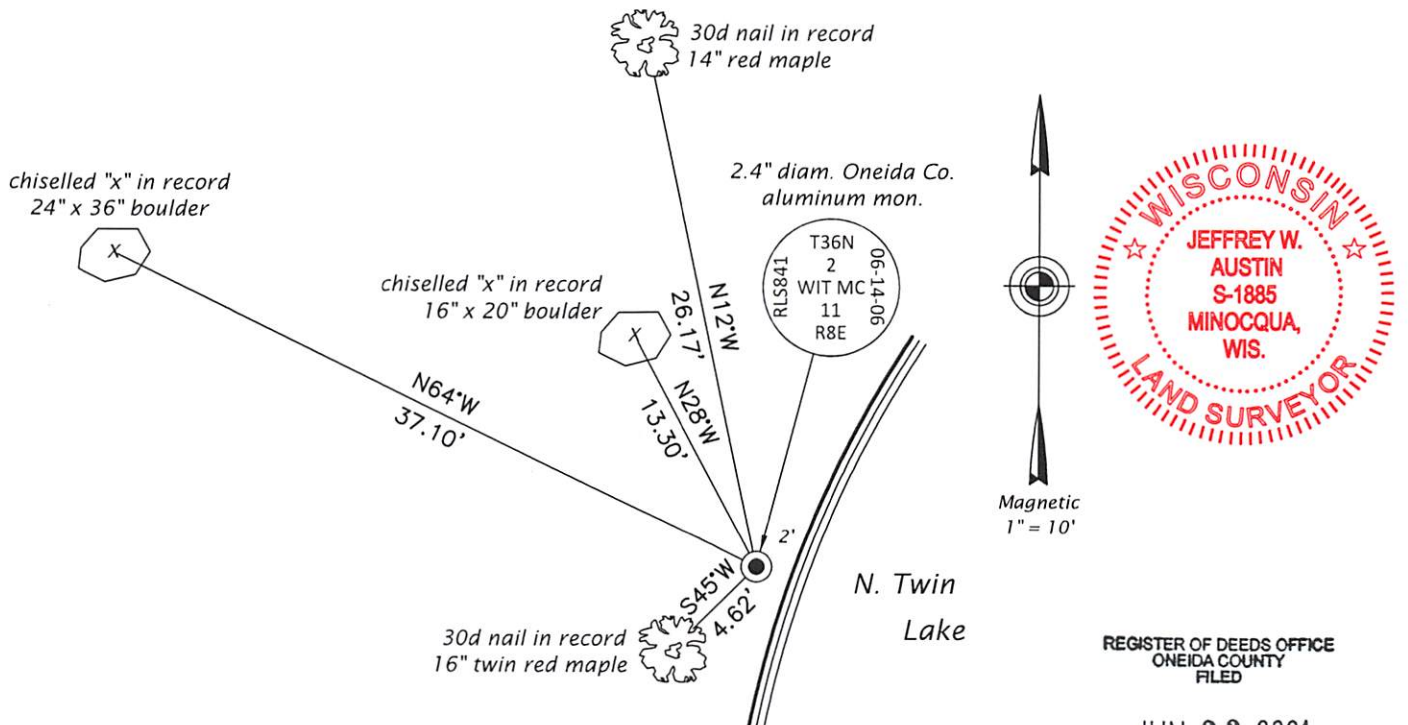
Dec. 20, 2006: USPLS Monument Record by William C. Rohde, filed in Oneida County

A complete history of the corner can be found on the previous land corner document(s). I accept the record activity as a true and faithful perpetuation or reestablishment of the original corner location and further perpetuate it as described below.

May 14, 2021: I found and accepted the record monument, a 2.4" diam. aluminum pipe with a 3.3" diam. Oneida Co. aluminum cap projecting 10" above the ground surface. I found or established accessories as shown below. I found a white vinyl sign post bearing East, 1.0 ft.

The coordinate value shown has been verified by at least one of the following methods: 1) comparison to a previously GNSS determined published value; 2) the value is the average of two or more GNSS observations at a markedly different time; 3) one or more distances were measured back to the GNSS observed corner from temporary GNSS observed offset locations.

(c)(d)(e) Plan view of corner with ties to at least 4 witness monuments. If in disagreement with previously established corner, show the distances between the two corners and also indicate the ties to the disputed.



(i) I, Jeffrey W. Austin, Professional Land Surveyor No. S-1885, hereby certify that the corner location on this record was determined by me or under my direction and control and that this U.S. Public Land Survey Monument Record is correct and complete to the best of my knowledge and belief.

[Handwritten Signature]
 Signature
 MAY 20, 2021
 Date

REGISTER OF DEEDS OFFICE
 ONEIDA COUNTY
 FILED

JUN 23 2021

KYLE J. FRANSON
 REGISTER OF DEEDS