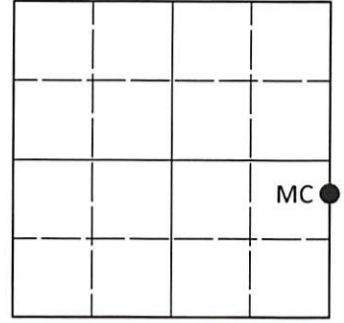


**U.S. PUBLIC LAND SURVEY MONUMENT RECORD**

Note: This form is intended and designed to fulfill all requirements of Wisconsin Administrative Code, Chapter A-E 7.08 U.S. Public Land Survey Monument Record (3)(a-i).

(a) CORNER LOCATION  
 Meander Cor. of Secs. 1 & 2  
 Township 36 North  
 Range 8 East of the 4th P.M.  
 Town of Crescent, City of Rhinelander  
 County of Oneida

WISCRS - Oneida County  
 N: 163,326.17 USft  
 E: 254,362.54 USft  
 Datum: NAD 83(2011) ep. 2010.00  
 GNSS Method: RTN - Offset  
 GNSS Control: WISCORS VRS



Sec. 2, T. 36 N., R. 8 E.

(b)(f)(g)(h) Description of monument found at this corner and if it was accepted, state all evidence (material, testimonial, occupational, plats, records, other monuments) used as a basis for accepting. If not accepted or if nothing was found, state evidence used as basis for establishing location. If re-established through lost corner proportionate methods, indicate all monuments, distances and directions used to establish. Indicate type of monument and sign post found or set.

July, 1863: GLO survey by William Daugherty, U.S. Deputy Surveyor. South corrected between Secs. 1 and 2, at 45.43 chs. set a wood post witnessed by: birch 8 S12°W, 26 lks.; birch 8 S25°E, 22 lks.

February 21, 1984: On OCS map. no. B-4233, Elton A. Petersen identifies corner as 4" x 4" x 36" concrete monument with aluminum cap set.

June 23, 2023: I found and accepted the record monument, a 4.0" sq. concrete monument, firmly set, with a 4.0" diam. WPS aluminum tablet flush with the ground surface. I found or established accessories as indicated below. I set a white vinyl sign post bearing West, 0.7 ft.

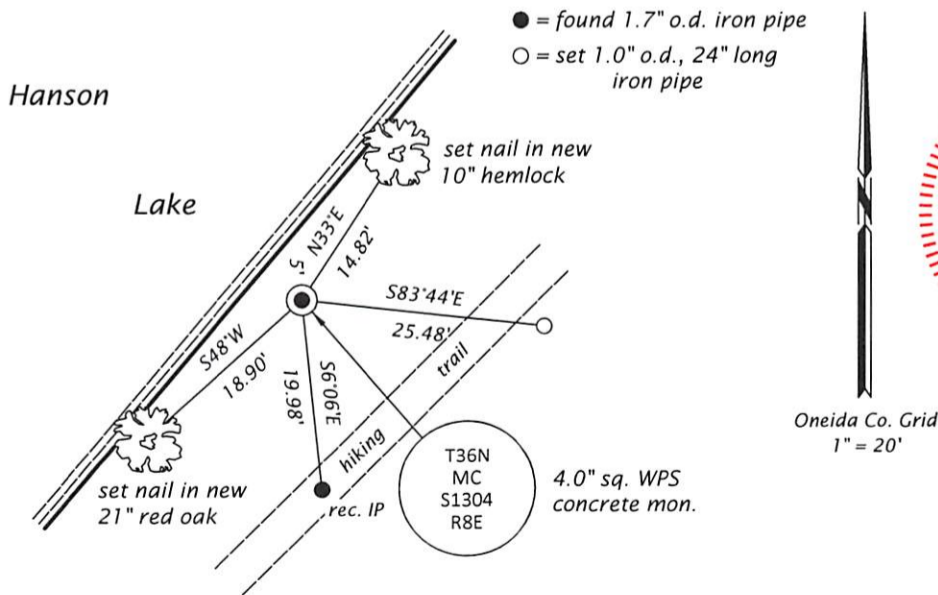
The coordinate value shown has been determined by traversing from two or more GNSS offset points satisfying the accuracy requirements defined and qualified in the 2022 Oneida County Fee Schedule for USPLS Corners.

REGISTER OF DEEDS OFFICE  
 ONEIDA COUNTY  
 FILED

JUL 06 2023

KYLE J. FRANSON  
 REGISTER OF DEEDS

(c)(d)(e) Plan view of corner with ties to at least 4 witness monuments. If in disagreement with previously established corner, show the distances between the two corners and also indicate the ties to the disputed.



(i) I, Jeffrey W. Austin, Professional Land Surveyor No. S-1885, hereby certify that the corner location on this record was determined by me or under my direction and control and that this U.S. Public Land Survey Monument Record is correct and complete to the best of my knowledge and belief.

*[Handwritten Signature]*  
 Signature

JULY 1, 2023  
 Date