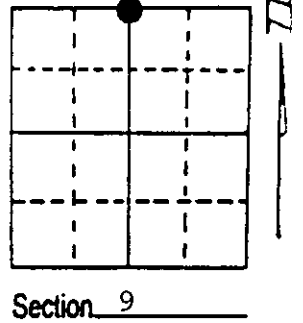


U.S. PUBLIC LAND SURVEY MONUMENT RECORD

Note: This form is intended and designed to fulfill all requirements of Wisconsin Administrative Code, Chapter A-E 7.08 U.S. Public Land Survey Monument Record (3) (a) (b) (c) (d) (e) (f) (g) (h) (i). An additional sheet may be added if necessary to conform with said requirements.

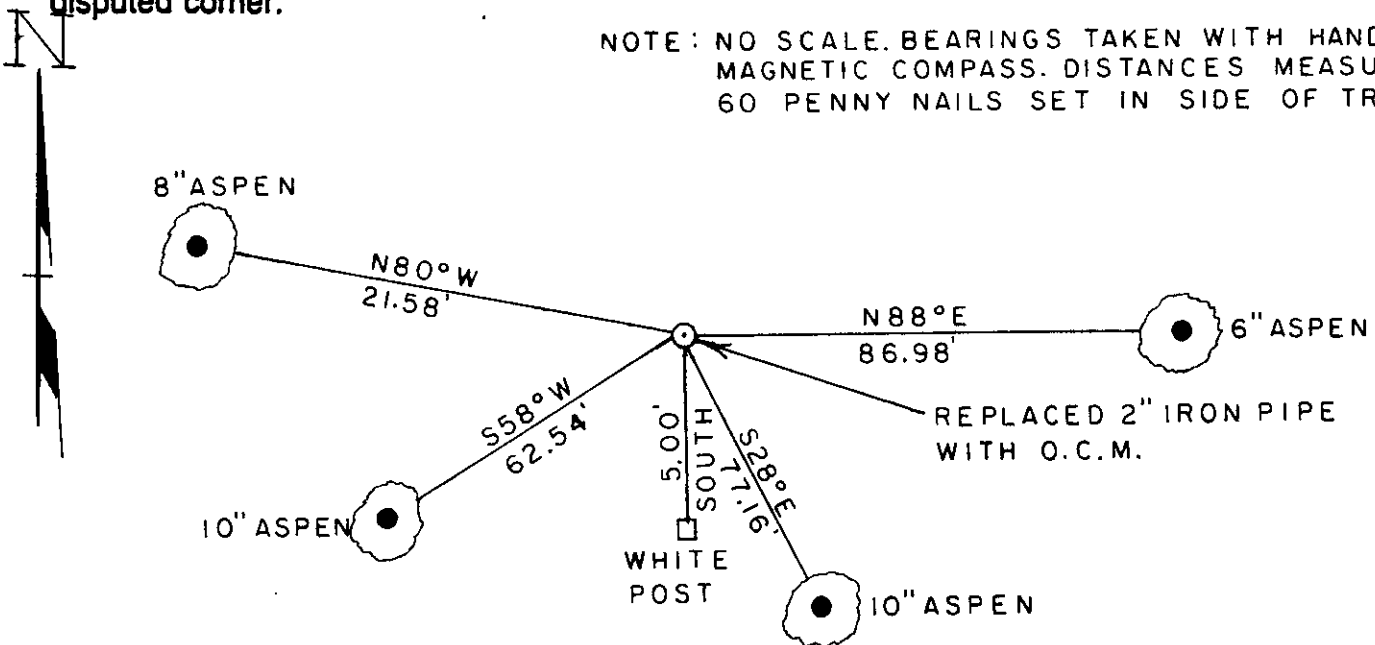
(a) Corner location: Township 36 North
 Range 8 East/West
 Town/City/Village Crescent
 County Oneida



(b) (f) (g) (h) Description of monument found at this corner and if it was accepted, state all evidence (material, testimonial, occupational, plats, records, other monuments) used as a basis for accepting. If not accepted or if nothing was found, state evidence used as basis for establishing location. If reestablished through lost corner proportionate methods, indicate all monuments, distances and directions used to establish. Indicate type of monument found or set and sign post.

1863-William E. Daugherty set $\frac{1}{2}$ post and made B.T.s
 Aspen 14" S 29° W 28 links, Aspen 9" N 33° W 17 links.
 1914-Vaughn set $\frac{1}{4}$ post 39.91 chains West of NE corner.
 Indicates remains of B.T.s W. Pine stump 14" N 25° E
 32 links, W. Pine stump 10" S 74 $\frac{1}{2}$ ° W 40 links.
 1961-I. Branham set $\frac{1}{4}$ post from stumps of Vaughn's B.T.s.
 1975-Genisot & Associates found iron pipe.
 1977- William Immich found iron pipe.
 1994-William E. Bandow found and replaced 2" iron pipe with
 Oneida County Monument and witnessed below.

(c) (d) (e) Plan view of corner with ties to at least 4 witness monuments. If in disagreement with previously established corner, show the distances between the two corners and also indicate the ties to the disputed corner.



(i) I, William E. Bandow
 (type or print name) certify that the corner location on this record was determined by me or under my direction and control and that this U.S. Public Land Survey Monument Record is correct and complete to the best of my knowledge and belief.

William E. Bandow 5-20-94
 Signature Date



Index No. E-11

3608040020

Stamp