

U.S. PUBLIC LAND SURVEY MONUMENT RECORD

Note: This form is intended and designed to fulfill all requirements of the Wisconsin Administrative Code, Chapter A-E 7.08 U.S. Public Land Monument Record (3)(a)(b)(c)(d)(e)(f)(g)(h)(i). An additional sheet may be added if necessary to conform with said requirements.

ONEIDA COUNTY

JUN 22 2017

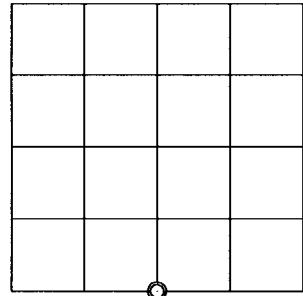
(a) CORNER LOCATION:
 South Quarter Corner of Section 5
 Township 36 North
 Range 8 East
 Town of Crescent
 County of Oneida

WISCORS - Oneida County
 North: * USft
 East: * USft
 Latitude:
 Longitude:
 Datum: NAD 83(2011)
 GNSS Method: Static - Direct
 GNSS Control: WISCORS VRS
 Record North: 161351.764 USft
 Record East: 236625.961 USft
 Record Datum: NAD 83(1991)

AT _____ O'CLOCK _____ M
 KYLE J. FRANSON
 REGISTER OF DEEDS

(RECORDING AREA)

SECTION 5



(b) HISTORY OF ORIGINAL CORNER ESTABLISHMENT

Original Surveyor: William E. Daugherty
 Date of Survey: Commenced July 6th, 1863
 Completed July 16th, 1863
 Original B.T.'S: Sugar 8" N 14°W, 20 lks.
 Birch 10" S 71°E 17 lks.

(f)(g)(h) DESCRIPTION OF MONUMENT FOUND AT THIS CORNER AND IF IT WAS ACCEPTED, STATE ALL EVIDENCE (MATERIAL, TESTIMONIAL, OCCUPATIONAL, PLATS, RECORD, OTHER MONUMENTS) USED AS A BASIS FOR ESTABLISHING LOCATION. IF NOT ACCEPTED OR IF NOTHING WAS FOUND, STATE EVIDENCE USED AS BASIS FOR ESTABLISHING LOCATION. IF REESTABLISHED THROUGH LOST CORNER PROPORTIONATE METHODS, INDICATE ALL MONUMENTS, DISTANCES AND DIRECTIONS USED TO ESTABLISH. INDICATE TYPE OF MONUMENT AND SIGN POST FOUND OR SET.

August 10, 1903 - D. H. Vaughan, County Surveyor (Old Field Book 4, page 45 and also Dorr-Vaughan Book, page 125 for a survey in Section 5, T36N, R8E) found 1/4 P. 2 original B.T.

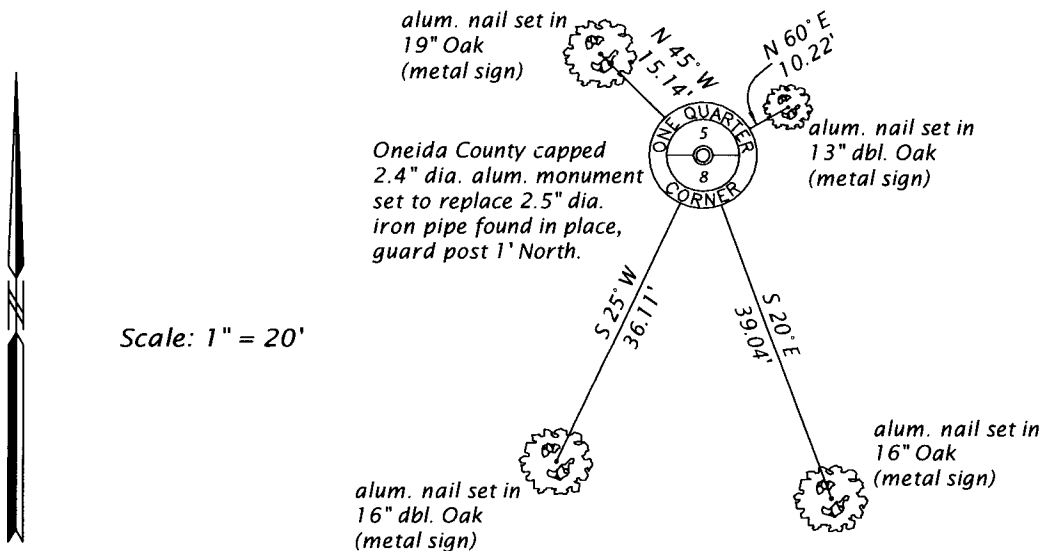
May 24, 1937 - V. M. Maine, County Surveyor (Maine 1937A field book, page 38, for a survey of the west half of the line common to Sections 5 and 8) on a random line at 42.44 chains east of the section corner "Fell .48 south of old 1/4 stk. intersection of fence, stp of B.T. viz Mpl. 8 N. 14°W. 20 "

January 1940 - V. M. Maine, County Surveyor (Maine 1940A field book, pages 18-27 and also a map filed as A118 for a survey in Section 8, T36N, R8E) recovered the Orig. 1/4 stake, north side of Section 8 as described in 1937 Diary, May 24th notes.

(CONTINUED ON REVERSE PAGE)

~~The coordinate value shown has been verified by at least one of the following methods: 1) comparison to a previously GPS determined published value; 2) the value is the average of two or more GPS observations at a markedly different time; 3) one or more distances were measured back to the GPS observed corner from temporary GPS observed offset locations.~~ *see map*

(c)(d)(e) PLAN VIEW OF CORNER WITH TIES TO AT LEAST 4 WITNESS MONUMENTS. IF IN DISAGREEMENT WITH PREVIOUSLY ESTABLISHED CORNER, SHOW THE DISTANCE BETWEEN THE TWO CORNERS AND ALSO INDICATE THE TIES TO THE DISPUTED CORNER.



(i) I, JAMES D. REIN, PROFESSIONAL LAND SURVEYOR NO. S-1234 HEREBY CERTIFY THAT THE CORNER LOCATION ON THIS RECORD WAS DETERMINED BY ME OR UNDER MY DIRECTION AND CONTROL AND THAT THIS U.S. PUBLIC LAND SURVEY MONUMENT RECORD IS CORRECT AND COMPLETE TO THE BEST OF MY KNOWLEDGE AND BELIEF.



[Handwritten Signature]

6-12-17
 DATE

INDEX NO. E-7
 3608050020

(CONTINUED FROM REVERSE PAGE)

June 22, 1999 - Thomas A. Boettcher, RLS No. 1763, Eagle Landmark Surveying, Inc. (Oneida County Certified Survey Map no. 2253, for a survey in Section 5, T36N, R8E) legends the South 1/4 Corner, a 2" iron pipe found in place.

May 2, 2017 - James D. Rein, PLS No. 1234, we recovered a 2.5" o.d. iron pipe with old fence post lying by corner and remains of old wire running west and north. This pipe has been accepted as the corner by numerous surveys in both Sections 5 and 8. Thus I accept the pipe as being a perpetuation of the original corner and we replaced it with an Oneida County capped 2.4" dia. x 30" long aluminum monument and made ties as shown in the plan .