

JUN 12 2023

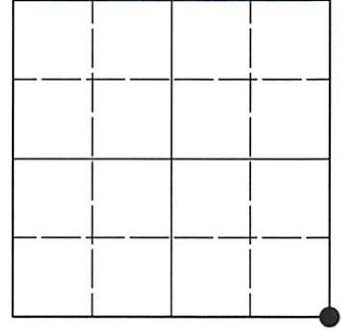
KYLE J. FRANSON
REGISTER OF DEEDS

U.S. PUBLIC LAND SURVEY MONUMENT RECORD

Note: This form is intended and designed to fulfill all requirements of Wisconsin Administrative Code, Chapter A-E 7.08 U.S. Public Land Survey Monument Record (3)(a-i).

(a) CORNER LOCATION
Cor. of Secs. 5, 6, 7 & 8
Township 36 North
Range 8 East of the 4th P.M.
Town of Crescent
County of Oneida

WISCRS - Oneida County
N: 161,326.24 USft
E: 233,835.14 USft
Datum: NAD 83(2011) ep. 2010.00
GNSS Method: Static - Direct
GNSS Control: TrimbleRTX



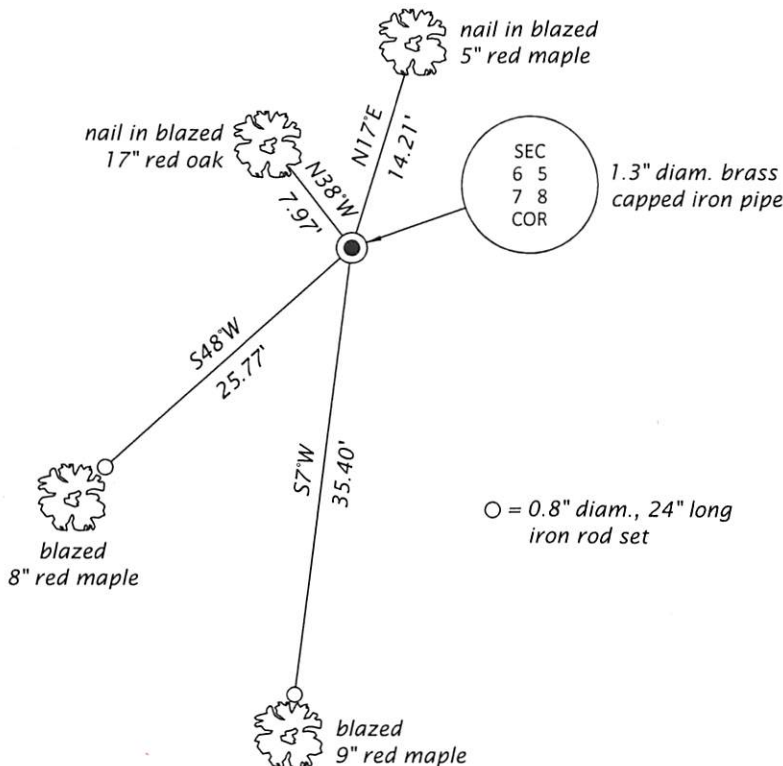
Sec. 6, T. 36 N., R. 8 E.

(b)(f)(g)(h) Description of monument found at this corner and if it was accepted, state all evidence (material, testimonial, occupational, plats, records, other monuments) used as a basis for accepting. If not accepted or if nothing was found, state evidence used as basis for establishing location. If re-established through lost corner proportionate methods, indicate all monuments, distances and directions used to establish. Indicate type of monument and sign post found or set.

- July, 1863: GLO survey by William E. Daugherty, U.S. Deputy Surveyor. North between Secs. 7 and 8, at 80.00 chs. set a wood post witnessed by: aspen 12 N61°E, 10 lks.; aspen 8 S32°W, 17 lks.
- May 24, 1937: On page 33 of Maine book 2, Vernon Maine identifies corner as "old stake and corner of old fences."
- January 15, 2013: On OCS Map No. C-2804, Anthony R. Jones identifies corner as "found 1-1/2" brass cap on 1-1/4" iron pipe, monument record to be filed."
- May 9, 2023: I found and accepted the record monument, a 1.3" diam. iron pipe, firmly set adjacent to a fir stump, with a 2.0" diam. Oneida Co. brass cap projecting 3" above the ground surface. I found or established accessories as indicated below. I found a white vinyl sign post bearing West, 0.9 ft.

The coordinate value shown is the result of a two-hour static GNSS observation satisfying the accuracy requirements defined and qualified in the 2022 Oneida County Fee Schedule for USPLS Corners.

(c)(d)(e) Plan view of corner with ties to at least 4 witness monuments. If in disagreement with previously established corner, show the distances between the two corners and also indicate the ties to the disputed.



(i) I, Jeffrey W. Austin, Professional Land Surveyor No. S-1885, hereby certify that the corner location on this record was determined by me or under my direction and control and that this U.S. Public Land Survey Monument Record is correct and complete to the best of my knowledge and belief.

[Handwritten Signature]
Signature

JUNE 1, 2023
Date