

JUN 12 2023

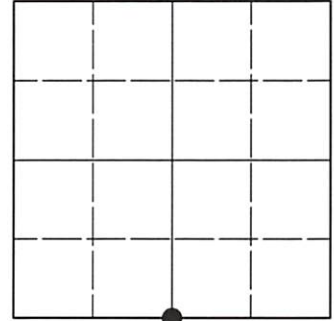
KYLE J. FRANSON
REGISTER OF DEEDS

U.S. PUBLIC LAND SURVEY MONUMENT RECORD

Note: This form is intended and designed to fulfill all requirements of Wisconsin Administrative Code, Chapter A-E 7.08 U.S. Public Land Survey Monument Record (3)(a-i).

(a) CORNER LOCATION
1/4 Cor. of Secs. 6 & 7
Township 36 North
Range 8 East of the 4th P.M.
Town of Crescent
County of Oneida

WISCORS - Oneida County
N: 161,301.55 USft
E: 230,577.21 USft
Datum: NAD 83(2011) ep. 2010.00
GNSS Method: RTN - Direct
GNSS Control: WISCORS VRS



Sec. 6, T. 36 N., R. 8 E.

(b)(f)(g)(h) Description of monument found at this corner and if it was accepted, state all evidence (material, testimonial, occupational, plats, records, other monuments) used as a basis for accepting. If not accepted or if nothing was found, state evidence used as basis for establishing location. If re-established through lost corner proportionate methods, indicate all monuments, distances and directions used to establish. Indicate type of monument and sign post found or set.

July, 1863: GLO survey by William E. Daugherty, U.S. Deputy Surveyor. East corrected between Secs. 6 and 7, at 19.73 chs. set a wood post witnessed by: birch 6 N31°E, 27 lks.; tamarack 10 S50°W, 41 lks.

May 24, 1937: On page 33 of Maine book 2, Vernon Maine identifies corner as "B.F. Dorr's 1/4 stake between Secs. 6 and 7, 36-8. Fence on line East."

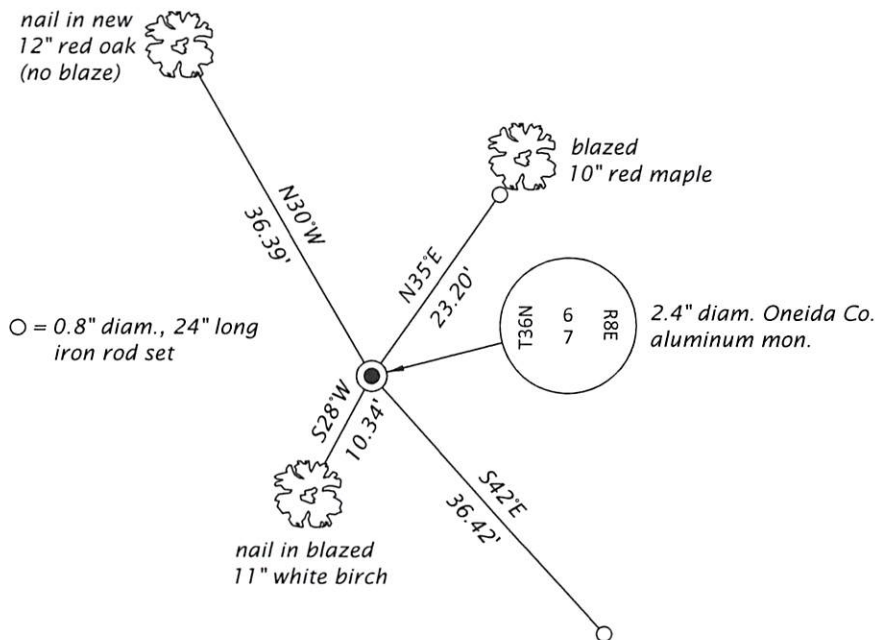
January 31, 2002: On OCS Map No. C-1871, Devon Vanden Heuvel identifies corner as "Oneida County aluminum monument."

January 15, 2013: On OCS Map No. C-2804, Anthony R. Jones identifies corner as "found aluminum Oneida County monument, see monument record for details."


May 9, 2023: I found and accepted the record monument, a 2.4" diam. aluminum pipe, loosely set, with a 3.3" diam. Oneida Co. aluminum cap projecting 10" above the ground surface. I found or established accessories as indicated below. I set a white vinyl sign post bearing Northwest, 0.6 ft.

The coordinate value shown is the weighted mean of two or more GNSS observations at markedly different times satisfying the accuracy requirements defined and qualified in the 2022 Oneida County Fee Schedule for USPLS Corners.

(c)(d)(e) Plan view of corner with ties to at least 4 witness monuments. If in disagreement with previously established corner, show the distances between the two corners and also indicate the ties to the disputed.



(i) I, Jeffrey W. Austin, Professional Land Surveyor No. S-1885, hereby certify that the corner location on this record was determined by me or under my direction and control and that this U.S. Public Land Survey Monument Record is correct and complete to the best of my knowledge and belief.


Signature

JUNE 1, 2023
Date