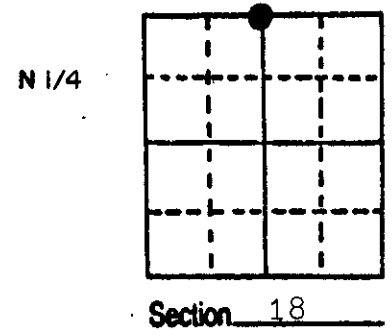


# U.S. PUBLIC LAND SURVEY MONUMENT RECORD

**Note:** This form is intended and designed to fulfill all requirements of Wisconsin Administrative Code, Chapter A-E 5.02, U.S. Public Land Survey Monument Record (3) (a) (b) (c) (d) (e) (f) (g) (h) (i). An additional sheet may be added if necessary to conform with said requirements.

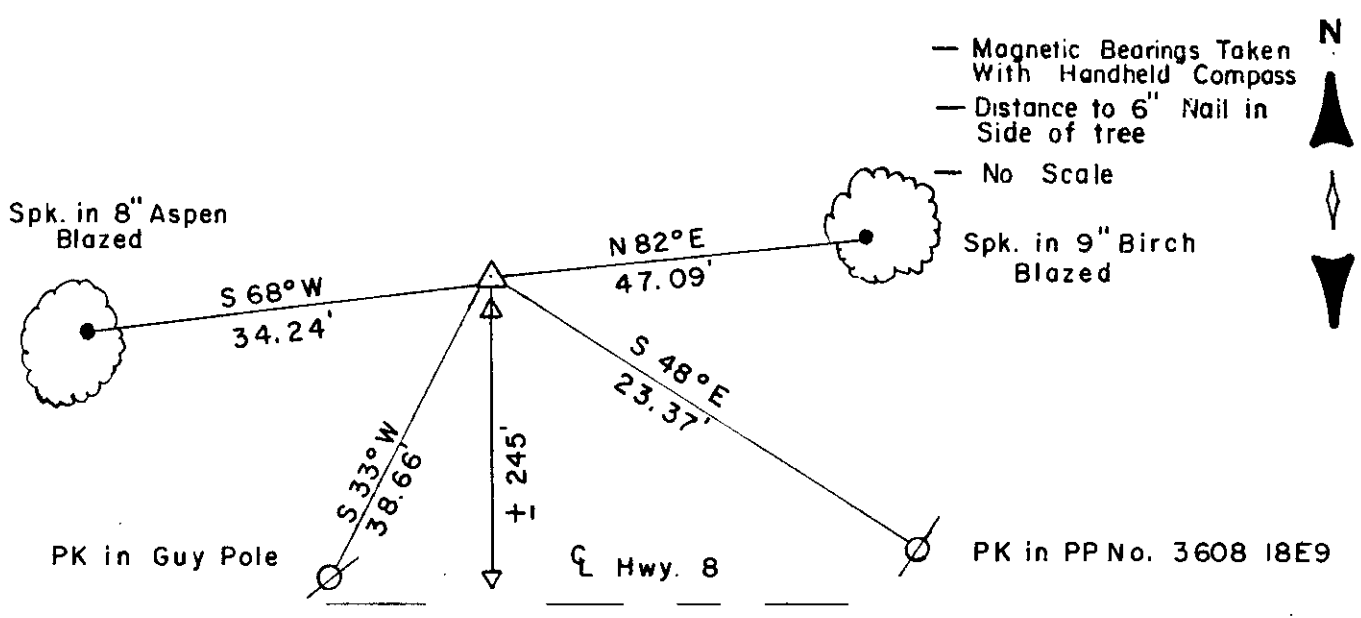
(a) Corner location: Township 36 North  
 Range 8 East/West  
 Town/City/Village Crescent  
 County Oneida



(b) (f) (g) (h) Description of monument found at this corner and if it was accepted, state all evidence (material, testimonial, occupational, plats, records, other monuments) used as a basis for accepting. If not accepted or if nothing was found, state evidence used as basis for establishing location. If reestablished through lost corner proportionate methods, indicate all monuments, distances and directions used to establish.

- 1863 William Daugherty set original corner: East between 7 and 18 21.30 set  $\frac{1}{4}$  post. BT's Y. Pine 20" N 10° E 13 lks, Y. Pine 20" S 22° W 32 lks.
- 1890 Dorr ran South from corner 84.94.
- 1905 Vaughan ran North from center by Dorr and Monsell 39.34. Both original BT's are stumps.
- 1941 Wisconsin Highway Dept. measures 201.3' from center line Hwy. '8' to corner.
- 1973 Loftus shows 2 corners and uses northerly position.
- 1974 Genisot & Associates accepts Loftus position.
- 1987 I found a RR spike at Loftus' position. Distance south to center  $\frac{1}{4}$  corner compares well with Vaughan. Made BT's as shown below.

(c) (d) (e) Plan view of corner with ties to at least 4 witness monuments. If in disagreement with previously established corner, show the distances between the two corners and also indicate the ties to the disputed corner.



(i) I, William E. Bandow  
 (type or print name) certify that the corner location on this record was determined by me or under my direction and control and that this U.S. Public Land Survey Monument Record is correct and complete to the best of my knowledge and belief.  
William E. Bandow 3-1-88  
 Signature Date



GENISOT & ASSOCIATES INC.  
 1512 EAGLE ST., RHINELANDER, WIS.

Index No. 5-3

3608070020