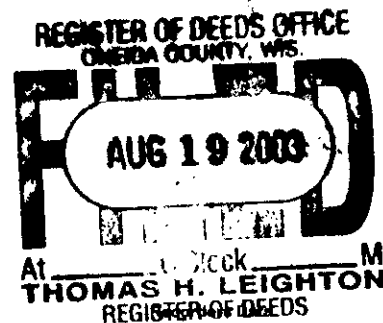


This form is intended to fulfill the requirements of Chapter A-E7.08 (3)(a) thru (i) U.S. Public Land Survey Monument Location Record, Wisconsin Administrative Code. Use the reverse side of form for continuation.



U.S. PUBLIC LAND SURVEY MONUMENT LOCATION RECORD

USPLS CORNER: NORTH WITNESS MC SECTION: 8 TOWNSHIP: 36 NORTH RANGE: 8 EAST
 NAME OF WATERWAY FOR M.C. CORNER: CRESCENT LAKE SECTION LINE: WEST
 (CITY)(VILLAGE)(TOWN) OF: CRESCENT COUNTY OF: ONEIDA

Description of monument found or placed and all other evidence used as the basis for monument location; including monuments and measurements required if the corner location was reestablished by lost corner proportionate methods. Also indicate name of the original surveyor, original survey date and the corner monument, bearing trees, witness or other reference monuments established, including measured bearing and distance ties, from available survey records.

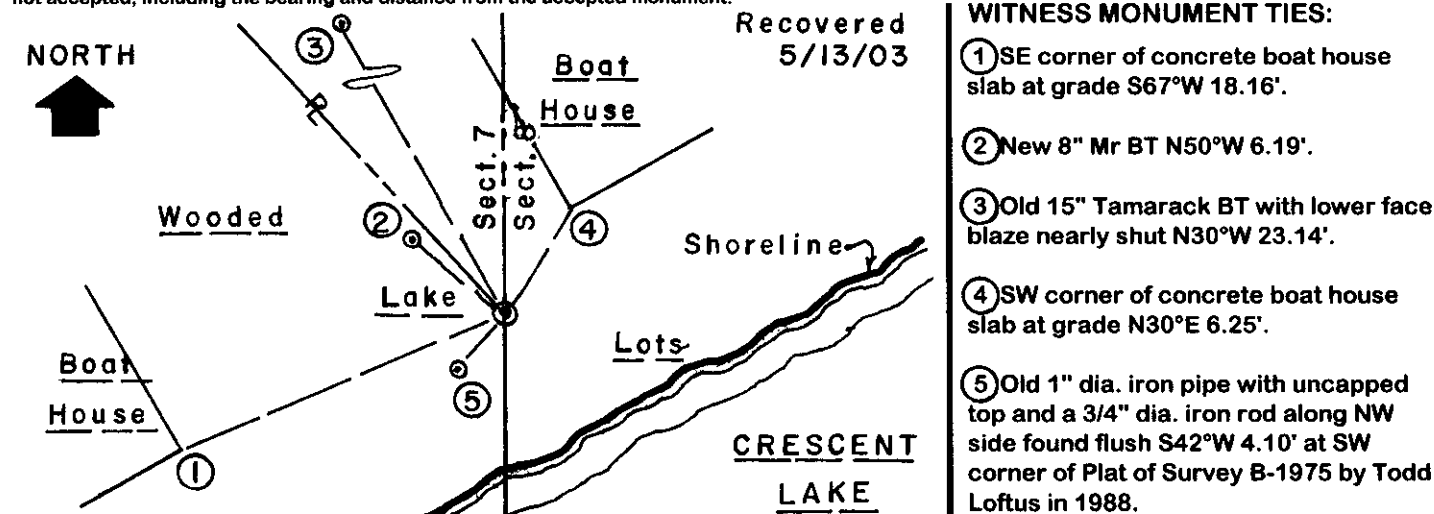
Found and accepted an old 1" dia. iron pipe with coupling and orange flagging at top flush with existing grade, which I carefully removed together with a 1.5" dia. iron pipe with a 1/2" iron pipe inside of it along the northerly side of the 1" dia. iron pipe and drove a standard 2" dia. by 30" long aluminum pipe monument with stamped Oneida County cap flush into the plumb soil cavity left below grade by the 1" dia. old iron pipe. I left the old iron pipes flat on grade next to a standard white poly 'T' marker post set 4 feet south of the corner monument which falls 8.5' North of lakeshore bearing N60°E.

In July 1863, William E. Daugherty/GLO set a wood post as the original MC and noted OBTs: a 7" Hemlock N43°E 7 links and a 7" Hemlock S37°W 3 links; all now obliterated.

In August 1923, D.H. Vaughan notes this witness MC location on Plat of Crescent Bay filed in Cabinet 1 Sheet 167 Oneida County records. In November 1924, C.D. Vaughan notes an "iron" at this witness MC location per Plat of Rodd's Addition To Crescent Bay filed in Cabinet 2 Sheet 19 Oneida County records. In April 1988, Todd Loftus/RLS 1523 notes Vaughans MC at N39°43'05"E 4.00' from a 1" iron pipe he found at the SW corner of his Plat of Survey filed as B-1975 in Oneida County survey records, but does not describe any monument at Vaughans MC, which undoubtedly had been the old iron pipe I found at the MC only 5 years later N42°E 4.10' from the latter Plat of Survey corner pipe noted by Loftus.

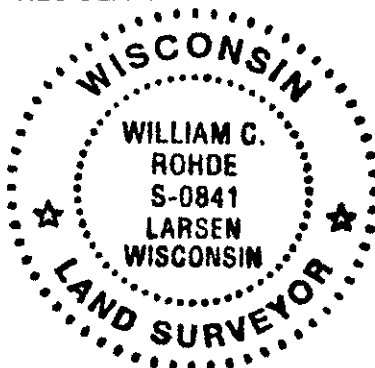
This recovery witnessed by adjacent lot owner Joseph Fochs at Fire No. 6993 USH 8 who had retained Surveyor Loftus.

Plan view map of monument location with bearing and distance ties to a minimum of four(4) described witness or reference monuments of concrete, natural stone, iron, live bearing trees or equivalent material. If applicable, also show a minimum of two(2) bearing and distance ties to any other monument found and not accepted; including the bearing and distance from the accepted monument.



Unless otherwise indicated, all bearing tree ties are to a .25" dia. by 2.5" long PK nail with a 1.25" dia. steel washer driven into unblazed right face and a .25" dia. by 2.5" long PK nail with a 2" dia. steel washer stamped BT is also driven into unblazed face of bearing tree at DBH; the basis for measured bearings is by compass to nearest degree and all tie distances are measured horizontal by steel tape corrected to nearest 1/100th feet at standard temperature of 68° F.

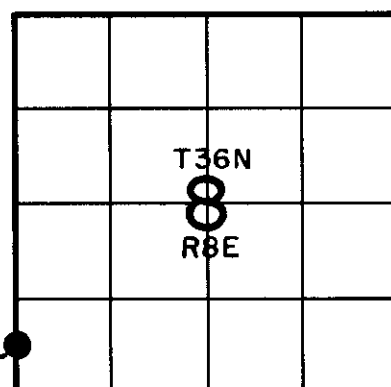
RLS SEAL:



LAND SURVEYOR CERTIFICATE:

I, William C. Rohde, hereby certify that I am duly licensed as a Professional Land Surveyor in the State of Wisconsin; that this USPLS monument location was determined by me and/or under my direct supervision and control; and that this U.S. Public Land Survey Monument Location Record is true and correct to the best of my knowledge and belief.

Signed William C. Rohde
 William C. Rohde RLS 841

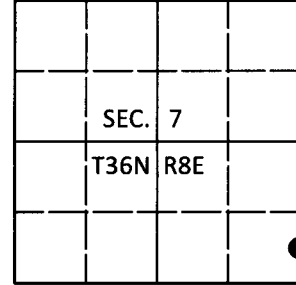


U.S. PUBLIC LAND SURVEY MONUMENT RECORD

Note: This form is intended and designed to fulfill all requirements of Wisconsin Administrative Code, Chapter A-E 7.08 U.S. Public Land Survey Monument Record (3)(a-i).

(a) CORNER LOCATION
 Wit. Meander Cor. of Secs. 7 & 8
 Township 36 North
 Range 8 East of the 4th P.M.
 Town of Crescent
 County of Oneida

WISCORS - Oneida County
 N: 156,440.29 USft
 E: 233,894.78 USft
 Datum: NAD 83(2011)
 GNSS Method: RTN - Direct
 GNSS Control: WISCORS VRS



(b) HISTORY OF ORIGINAL CORNER ESTABLISHMENT

Original Surveyor:

Original Accessories:

Date of Survey

Commenced:
 Completed:

See previous USPLS Monument Record

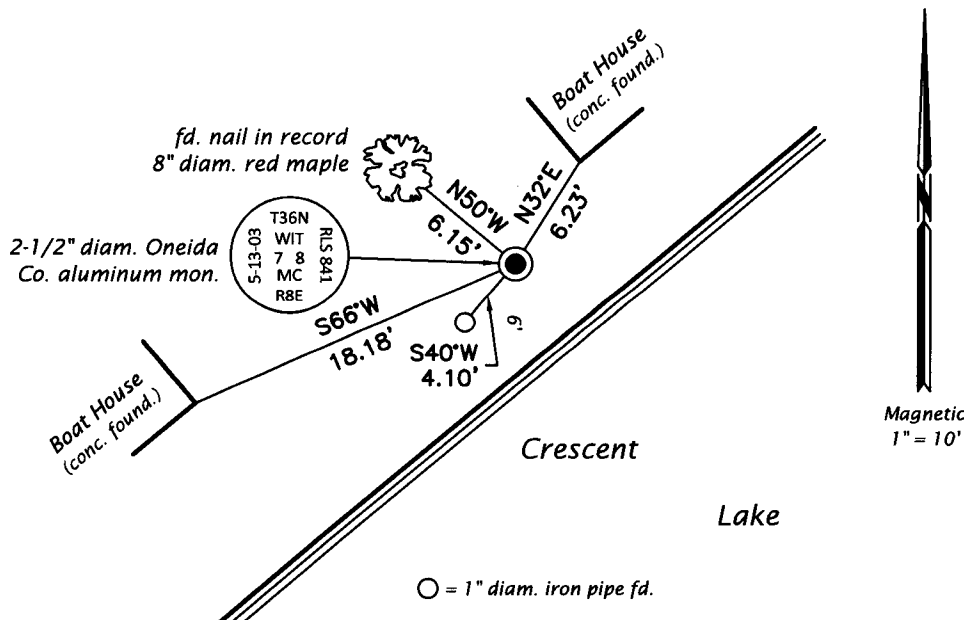
(b)(f)(g)(h) Description of monument found at this corner and if it was accepted, state all evidence (material, testimonial, occupational, plats, records, other monuments) used as a basis for accepting. If not accepted or if nothing was found, state evidence used as basis for establishing location. If re-established through lost corner proportionate methods, indicate all monuments, distances and directions used to establish. Indicate type of monument and sign post found or set.

This is a perpetuation of a previous USPLS Monument Record by William C. Rohde, RLS dated August 1, 2003 and filed in the office of the Oneida County Register of Deeds. A complete history of the corner can be found on the previous monument record. I accept the previous location as a true and faithful perpetuation or reestablishment of the original corner location and further perpetuate it as follows.

March 13, 2018: I found and accepted the record monument, a 2-1/2" diam. aluminum pipe with a 3-1/4" diam. Oneida Co. aluminum cap buried 2" beneath the ground surface. I found accessories as shown below and found a white vinyl sign post bearing South, 4.0 ft. dist.

The coordinate value shown has been verified by at least one of the following methods: 1) comparison to a previously GPS determined published value; 2) the value is the average of two or more GPS observations at a markedly different time; 3) one or more distances were measured back to the GPS observed corner from temporary GPS observed offset locations.

(c)(d)(e) Plan view of corner with ties to at least 4 witness monuments. If in disagreement with previously established corner, show the distances between the two corners and also indicate the ties to the disputed.



REGISTER OF DEEDS OFFICE
 ONEIDA COUNTY
 FILED

APR 12 2018

KYLE J. FRANSON
 REGISTER OF DEEDS

(i) I, Jeffrey W. Austin, Professional Land Surveyor No. S-1885, hereby certify that the corner location on this record was determined by me or under my direction and control and that this U.S. Public Land Survey Monument Record is correct and complete to the best of my knowledge and belief.

[Handwritten Signature]
 Signature

4 APR 2018
 Date