

This form is intended to fulfill the requirements of Chapter A-E 7.08 (3)(a) thru (i) U.S. Public Land Survey Monument Location Record, Wisconsin Administrative Code. Use the reverse side of form for continuation.

**U.S. PUBLIC LAND SURVEY MONUMENT LOCATION RECORD**

USPLS CORNER: WEST 1/4 CORNER SECTION: 8 TOWNSHIP: 36 NORTH RANGE: 8 EAST

NAME OF WATERWAY FOR M.C. CORNER: N/A SECTION LINE: N/A

~~(CITY/VILLAGE)~~(TOWN) OF: CRESCENT COUNTY OF: ONEIDA

Description of monument found or placed and all other evidence used as the basis for monument location; including monuments and related measurements required if the corner location was reestablished by lost corner proportionate methods. Also indicate name of original surveyor, original survey date and the corner monument, bearing trees, witness or other reference monuments established; including measured bearing and distance ties, from available records.

Found and accepted an old 1.25" dia. galvanized iron pipe with uncapped top 34" up and plumb at this corner location; I removed the 54" long iron pipe with well point and set a standard 2" dia. x 30" long aluminum pipe monument with stamped Oneida County cap 8" up into plumb soil cavity left by the old iron pipe below grade. Corner falls 8"+- NW of old fence corner post location now rotted off and tipped SE for old fencelines leading East and South. I left old iron pipe flat on grade nearby new monument set.

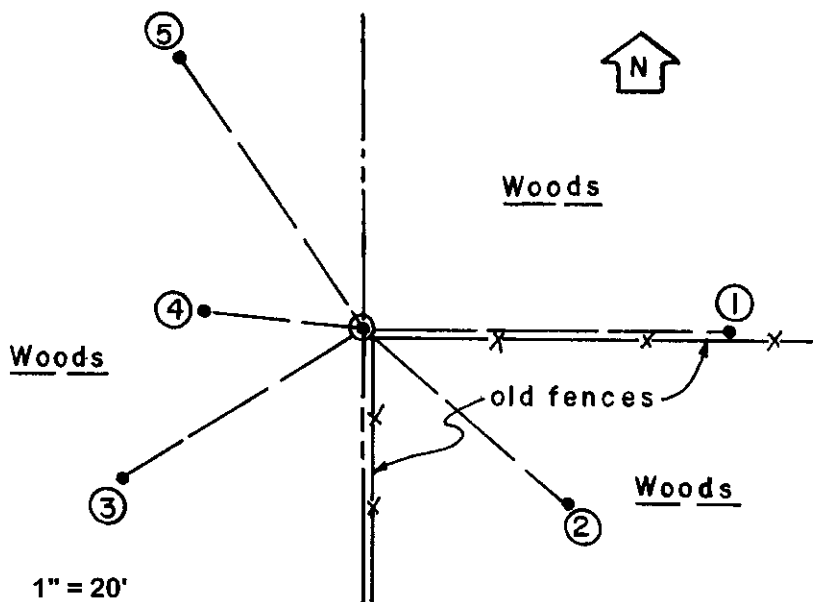
In July 1863, William E. Daugherty/GLO set a wood post as the original corner and marked OBTs: a 10" Sugar N45°W 11 links and a 12" Sugar N53°E 9 links; all are now obliterated.

In January 1940, V.M. Maine notes 1/4 stake never found and set a wood post midway on a right line between opposite section corners, to be replaced later with an iron, no BTs noted, per Plat of Survey filed as A-118 in Oneida County survey records.

William Badow/RLS 1182 notes a 2" iron pipe found at this corner for the following Certified Survey Maps in Oneida County records: CSM No. 538, 539 and 540 in March of 1978 and CSM 794 in June 1980; I verified the well point found at this corner as the probable 2" iron pipe referred to per phone query with Badow this date.

This recovery completed November 19, 2002 and directly witnessed by NW adjoiner/owner Thomas Mikle.

Plan view map of monument location with bearing and distance ties to a minimum of four(4) described witness or reference monuments of concrete, natural stone, iron, live bearing trees or equivalent material. If applicable, also show a minimum of two(2) bearing and distance ties to any other monument found and not accepted; including the bearing and distance from the accepted monument.



**WITNESS MONUMENT TIES:**

- ① Old 12" Mr BT East 38.20'.
- ② Old 14" Mr BT S50°E 28.21'.
- ③ New 10" Mr BT S58°W 29.14'.
- ④ North trunk of old 13"/15" double Oak BT N84°W 16.31'.
- ⑤ Old 9" Aspen BT N34°W 33.36'.

All old BTs have plain face blaze scars and old rusted 60d spike in right face root crown except NW Aspen spike in left root crown. I measured new ties to my standard PK/W set into right face of old BTs, and I set a standard white poly 'T' marker post 10" SE of corner monument.

SCALE: 1" = 20'

Unless otherwise indicated, all bearing tree ties are to a .25" dia. by 2.5" long PK nail with a 1.25" dia. steel washer driven into unblazed right face and a .25" dia. by 2.5" long PK nail with a 2" dia. steel washer stamped BT is also driven into unblazed face of bearing tree at DBH; the basis for measured bearings is by compass to nearest degree and all tie distances are measured horizontal by steel tape corrected to nearest 1/100th feet at standard temperature of 68° F.

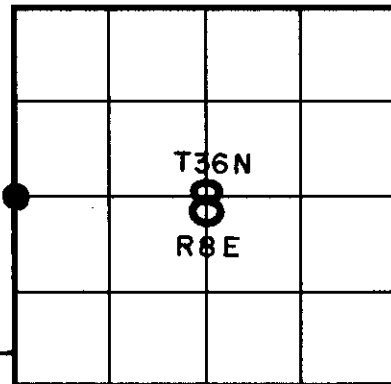
RLS SEAL:



LAND SURVEYOR CERTIFICATE:

I, William C. Rohde, hereby certify that I am duly licensed as a Professional Land Surveyor in the State of Wisconsin; that this USPLS monument location was determined by me and/or under my direct supervision and control; and that this U.S. Public Land Survey Monument Location Record is true and correct to the best of my knowledge and belief.

Signed: *William C. Rohde*  
William C. Rohde RLS 841



SECTION LOCATION MAP

INDEX NO. 65

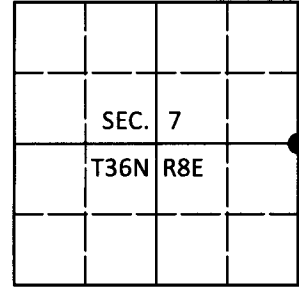
3608072000

# U.S. PUBLIC LAND SURVEY MONUMENT RECORD

Note: This form is intended and designed to fulfill all requirements of Wisconsin Administrative Code, Chapter A-E 7.08 U.S. Public Land Survey Monument Record (3)(a-i).

(a) CORNER LOCATION  
 1/4 Cor. of Secs. 7 & 8  
 Township 36 North  
 Range 8 East of the 4th P.M.  
 Town of Crescent  
 County of Oneida

WISCORS - Oneida County  
 N: 158,580.17 USft  
 E: 233,879.56 USft  
 Datum: NAD 83(2011)  
 GNSS Method: RTN - Direct  
 GNSS Control: WISCORS VRS



(b) HISTORY OF ORIGINAL CORNER ESTABLISHMENT

Original Surveyor:

Original Accessories:

Date of Survey Commenced:  
 Completed:

See previous USPLS Monument Record

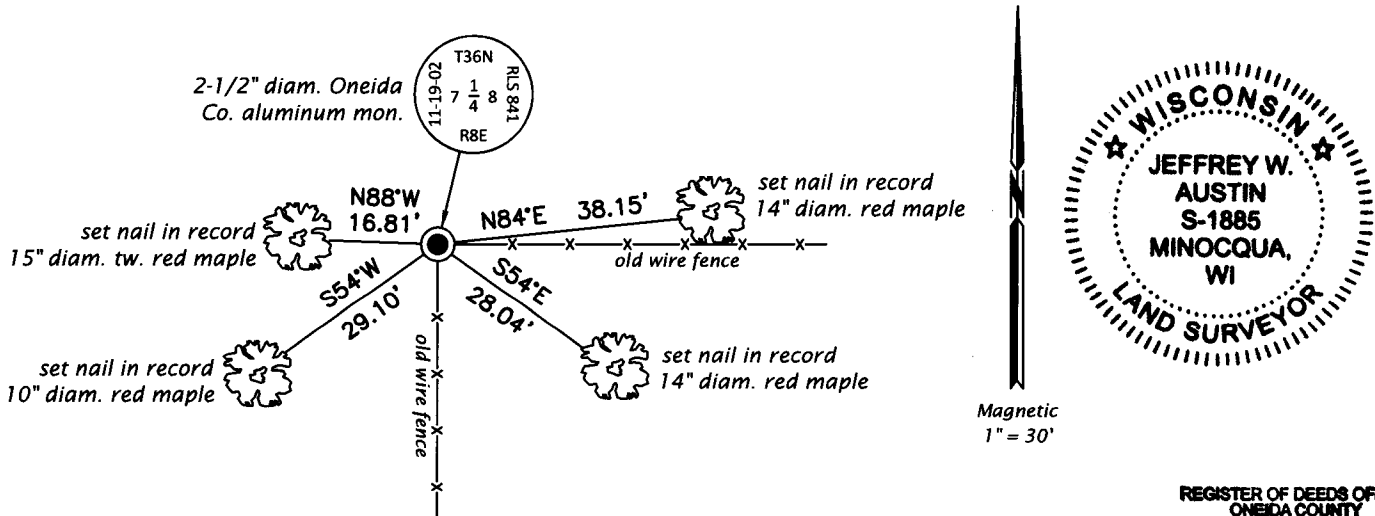
(b)(f)(g)(h) Description of monument found at this corner and if it was accepted, state all evidence (material, testimonial, occupational, plats, records, other monuments) used as a basis for accepting. If not accepted or if nothing was found, state evidence used as basis for establishing location. If re-established through lost corner proportionate methods, indicate all monuments, distances and directions used to establish. Indicate type of monument and sign post found or set.

*This is a perpetuation of a previous USPLS Monument Record by William C. Rohde, RLS dated March 1, 2003 and filed in the office of the Oneida County Register of Deeds. A complete history of the corner can be found on the previous monument record. I accept the previous location as a true and faithful perpetuation or reestablishment of the original corner location and further perpetuate it as follows.*

*March 12, 2018: I found and accepted the record monument, a 2-1/2" diam. aluminum pipe with a 3-1/4" diam. Oneida Co. aluminum cap projecting 8" above the ground surface. The record aspen bearing tree is gone. I found accessories as shown below and found a white vinyl sign post bearing Southeast, 1.0 ft. dist.*

*The coordinate value shown has been verified by at least one of the following methods: 1) comparison to a previously GPS determined published value; 2) the value is the average of two or more GPS observations at a markedly different time; 3) one or more distances were measured back to the GPS observed corner from temporary GPS observed offset locations.*

(c)(d)(e) Plan view of corner with ties to at least 4 witness monuments. If in disagreement with previously established corner, show the distances between the two corners and also indicate the ties to the disputed.

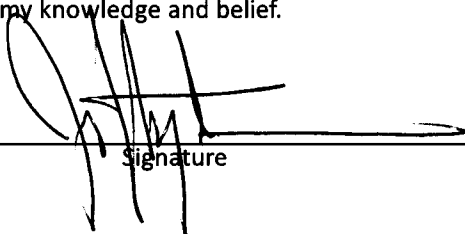


REGISTER OF DEEDS OFFICE  
 ONEIDA COUNTY  
 FILED

APR 12 2018

KYLE J. FRANSON  
 REGISTER OF DEEDS

(i) I, Jeffrey W. Austin, Professional Land Surveyor No. S-1885, hereby certify that the corner location on this record was determined by me or under my direction and control and that this U.S. Public Land Survey Monument Record is correct and complete to the best of my knowledge and belief.

  
 Signature

4 APR 2018  
 Date

3608072000 (INDEX NO. G-5)