

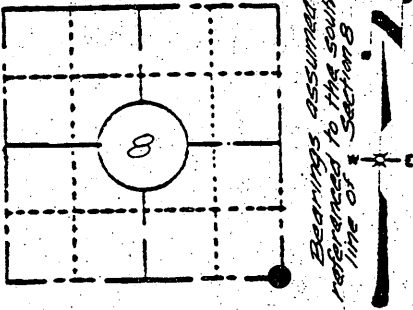
Stock No. 26273

U. S. PUBLIC LAND SURVEY MONUMENT RECORD

INSTRUCTIONS: This record shall show the location of the corner and shall include all of the following nine elements (a through i).

(a) Identify the corner by reference to the U.S. public land survey system.

Southeast Corner
Section 8
T36N, R8E



LOCATION SKETCH
(Location of landmark indicated by "●")

CORNER HISTORY

Septem br, 1863- William E. Daugherty, Deputy Surveyor, set post corner to Sections 8, 9, 16 and 17. Original bearing trees:

- White Pine 20" N60°E, 216 lks (142.56 feet)
- Birch 10" S 4°W, 250 lks (165.00 feet)
- Sept. Oct. 1939- Hal D. Craig, Surveyor and Lester S. Mann, Public Land Surveyor G.L.O. Dependent Resurvey and Extension Survey in Sections 16 and 21.
- Set 6" diameter concrete monument with 3-1/2" diameter brass tablet to replace a found 2" dia. iron pipe from which the remains of the original bearing tree, a Wh. Pine Stump 16" dia. bears N61-1/2°E, 216 lks. Made new BT's-
- White Pine 10" dia. bears N44-1/4°E, 77 lks (50.82 feet)
- White Pine 6" dia. bears S39-1/2°E, 11 lks (7.26 feet)
- White Pine 6" dia. bears S41-1/4°W, 44 lks (29.04 feet)
- White Pine 8" dia. bears N51-3/4°W, 115 lks (75.90 feet)

(b) Describe any record evidence, monument evidence, occupational evidence, testimonial evidence or any other material evidence you considered, and whether the monument was found or placed.

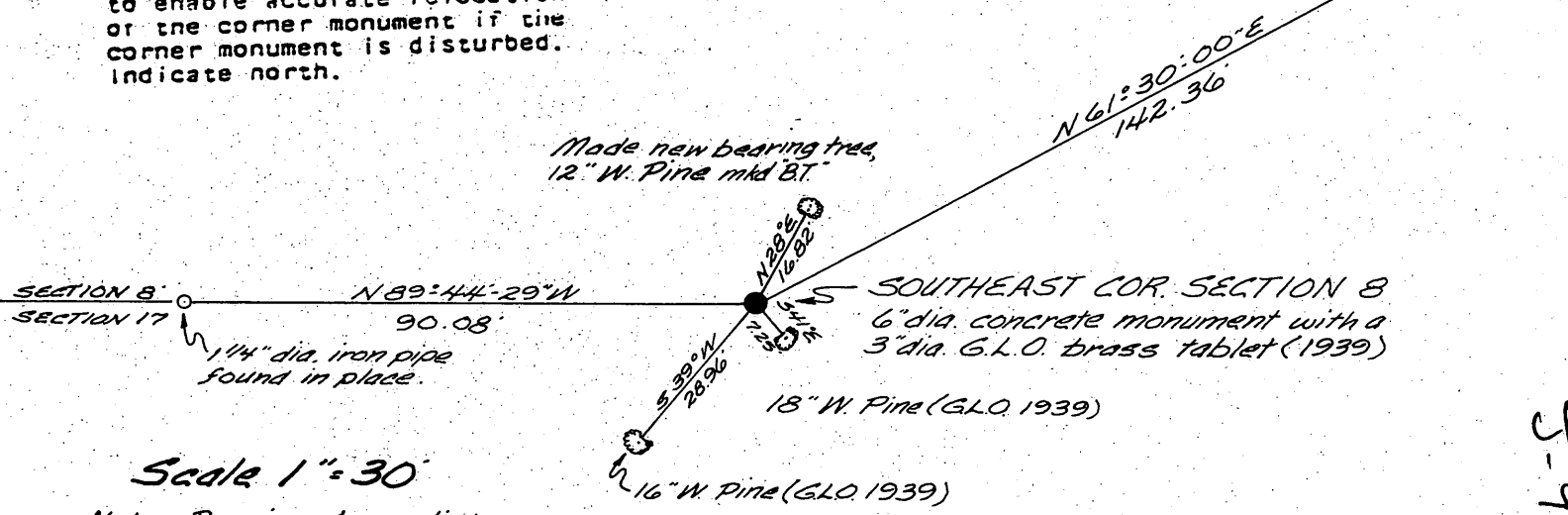
Found a 6" diameter concrete monument with a 3" diameter brass tablet marked "U. S. General Land Office Survey, 1939, T36N, R8E, S8, S9, S16, S17" from which the remains of the original Pine tree stump boxing plain N61-1/2°E, 142.6 feet.
Bearing trees from the 1939 Dependent Resurvey as follows:

- 18" White Pine (scar visible) S41°E, 7.25 feet
- 16" White Pine (scar visible) S39°W, 28.96 feet

(c) In the plan view drawing below, provide reference ties to at least 4 witness monuments, or, if the location is within a municipality, to at least 2 witness monuments. (Witness monuments shall be made of concrete, natural stone, iron or other equally durable material, except wood.) Describe witness monuments.

(d) Show a plan view drawing depicting the relevant monuments and reference ties which is sufficient in detail to enable accurate relocation of the corner monument if the corner monument is disturbed. Indicate north.

2" dia. iron pipe found in place at face of original Pine bearing tree stump.



Scale 1" = 30'

Note: Bearing tree distance measurements made to an aluminum nail set in center of root crown.

3608080000

5-9

(e) Describe any material discrepancy between the location of the corner as restored or reestablished and the location of that corner as previously restored or reestablished by distance and direction. Show the discrepancy on the plan view drawing under (d), above. Show the distances between the corner as previously restored or reestablished and (1) the corner as restored or reestablished; and (2) to at least 2 of the witness monuments shown on the drawing in (d), above.

Found no material discrepancy between the recovered corner position and the record description.

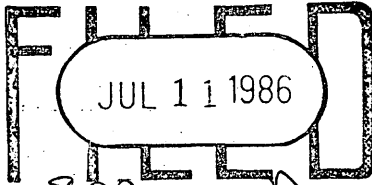
(f) Was the corner restored through acceptance of (1) an obliterated evidence location, or, (2) a found perpetuated location?

The corner was restored through acceptance of a found perpetuated location.

(g&h) Was the corner reestablished through lost corner proportionate methods? If so, show the method, including the directions and distances to other public land survey corners used as evidence or used for proportioning in determining the corner location?

No.

REGISTER OF DEEDS OFFICE
ONEIDA COUNTY, WIS.

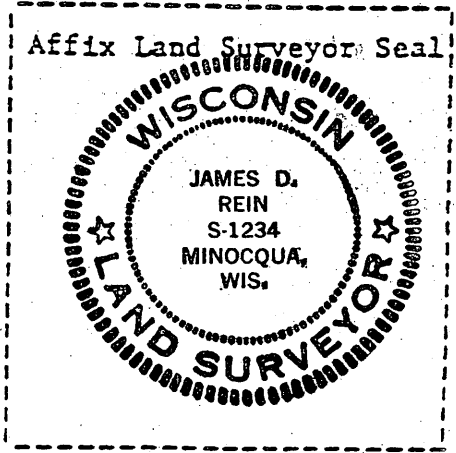


At 8:00 O'Clock A.M.
DORIS VERAGE KUEHN
REGISTER OF DEEDS

(1) I, JAMES D. REIN, Registered Land Surveyor No. S-1234 (type or print name) certify that the corner location shown on this record was determined by me or under my direction and control and that this U.S. Public Land Survey Monument Record is correct and complete to the best of my knowledge and belief.

James D. Rein
Signature

September 15th, 1983
Date

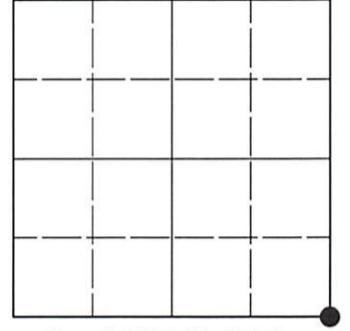


U.S. PUBLIC LAND SURVEY MONUMENT RECORD

Note: This form is intended and designed to fulfill all requirements of Wisconsin Administrative Code, Chapter A-E 7.08 U.S. Public Land Survey Monument Record (3)(a-i).

(a) CORNER LOCATION
 Cor. of Secs. 8, 9, 16 & 17
 Township 36 North
 Range 8 East of the 4th P.M.
 Town of Crescent
 County of Oneida

WISCRS - Oneida County
 N: 155,876.81 USft
 E: 238,250.88 USft
 Datum: NAD 83(2011) ep. 2010.00
 GNSS Method: RTN - Direct
 GNSS Control: WISCORS VRS



Sec. 8, T. 36 N., R. 8 E.

(b)(f)(g)(h) Description of monument found at this corner and if it was accepted, state all evidence (material, testimonial, occupational, plats, records, other monuments) used as a basis for accepting. If not accepted or if nothing was found, state evidence used as basis for establishing location. If re-established through lost corner proportionate methods, indicate all monuments, distances and directions used to establish. Indicate type of monument and sign post found or set.

This record is a perpetuation of the following land corner document(s):

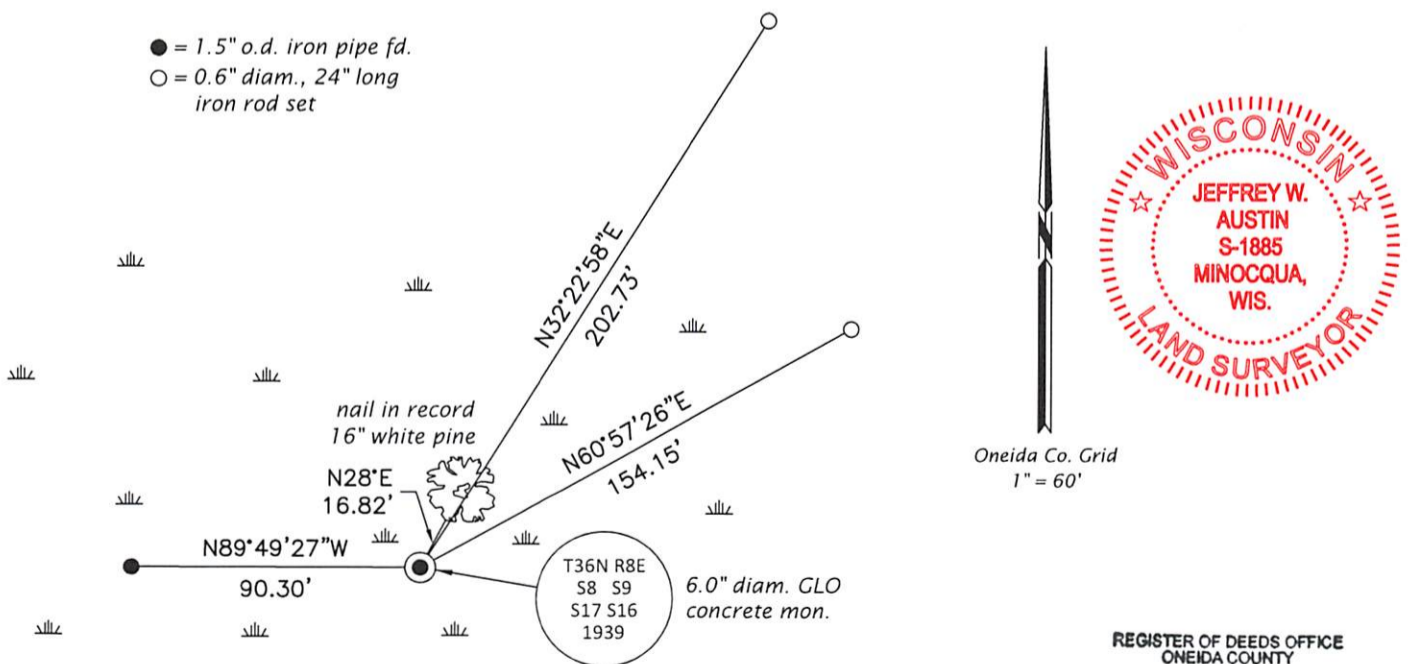
September 15, 1983: USPLS Monument Record by James D. Rein, filed in Oneida County

A complete history of the corner can be found on the previous land corner document(s). I accept the record activity as a true and faithful perpetuation or reestablishment of the original corner location and further perpetuate it as described below.

May 16, 2022: I found and accepted the record monument, a 6.0" diam. concrete monument, loosely set, with a 3.3" diam. GLO brass tablet 1" under the water surface. The corner is in an overflowed area of dead timber. The record iron pipe/stump at N61°30'E is gone. The record bearing trees at S41°E and S39°W are stumps. I found or established accessories as indicated below. I found a white vinyl sign post bearing North, 1.0 ft.

The coordinate value shown is the weighted mean of two or more GNSS observations at markedly different times satisfying the accuracy requirements defined and qualified in the 2022 Oneida County Fee Schedule for USPLS Corners.

(c)(d)(e) Plan view of corner with ties to at least 4 witness monuments. If in disagreement with previously established corner, show the distances between the two corners and also indicate the ties to the disputed.



(i) I, Jeffrey W. Austin, Professional Land Surveyor No. S-1885, hereby certify that the corner location on this record was determined by me or under my direction and control and that this U.S. Public Land Survey Monument Record is correct and complete to the best of my knowledge and belief.

[Handwritten Signature]
 Signature _____ Date JUNE 1, 2022

REGISTER OF DEEDS OFFICE
 ONEIDA COUNTY
 FILED

AUG 02 2022

KYLE J. FRANSON
 REGISTER OF DEEDS