

This form is intended to fulfill the requirements of Chapter A-E 7.08 (3)(a) thru (i) U.S. Public Land Survey Monument Location Record, Wisconsin Administrative Code. Use the reverse side of form for continuation.

U.S. PUBLIC LAND SURVEY MONUMENT LOCATION RECORD

USPLS CORNER: EAST WITNESS MC SECTION: 17 TOWNSHIP: 36 NORTH RANGE: 08 EAST

NAME OF WATERWAY FOR M.C. CORNER: CRESCENT LAKE SECTION LINE: NORTH

(CITY)(VILLAGE)(TOWN) OF: CRESCENT COUNTY OF: ONEIDA

Description of monument found or placed and all other evidence used as the basis for monument location: including monuments and related measurements required if the corner location was reestablished by lost corner proportionate methods. Also indicate name of original surveyor, original survey date and the corner monument, bearing trees, witness or other reference monuments established; including measured bearing and distance ties, from available records.

Found and accepted an old rusted 1" dia. by 18" long iron pipe monument with uncapped top flush with existing lawn grade at the N1/16NE forty corner per record survey plat filed as A-221 in Oneida County survey records, which I carefully pulled and reset with a standard 2" dia. by 30" long aluminum pipe monument with stamped Oneida County cap 1" below lawn grade; said monument set also to serve as this East Witness MC per approval of Oneida County Surveyor Michael Romport. No standard white poly "T" marker post set near corner as it would be in lawn area.

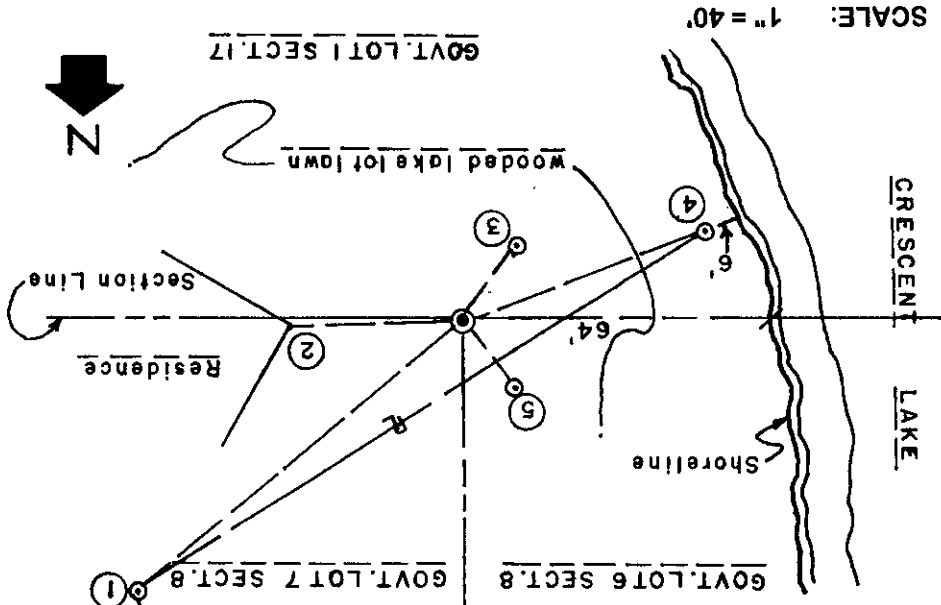
In July 1863, William E. Daugherty/GLO set a wood post as the original corner and marked new OBTS: a 15" Bw N75W 26 links and a 10" Hemlock S86E 14 links, all of which are now obliterated about 24' West of this corner location.

In 1940, V.M. Maine notes a buried Oak post at this corner location and marked BTs: a 14" Pw N26.75W 46.4 links and a 12" Pw S19E 25 links per Plat of Survey filed as A-118 in Oneida County survey records; all of which are now gone or obliterated.

In September 1947, F. Wincentsen/RLS 155, notes an iron pipe at this corner and new BTs: a 24" Pw N30W 17' and a 12" Pn S29W 19.2', per Plat of Survey filed as A-221 in Oneida County survey records; all found OK this date. He also noted an iron pipe with BTs as an MC 23.7' West of this forty corner location, all of which are now gone.

This recovery completed June 6, 2000; there were no direct witnesses. I also referred to 1970 Herbert Moore/RLS CSM No. 41 filed in Oneida County records; two(2) monuments of which I used for new ties indicated below.

Plan view map of monument location with bearing and distance ties to a minimum of four(4) described witness or reference monuments of concrete, natural stone, iron, live bearing trees or equivalent material. If applicable, also show a minimum of two(2) bearing and distance ties to any other monument found and not accepted; including the bearing and distance from the accepted monument.



- WITNESS MONUMENT TIES:**
- ① Old 1" dia. iron pipe found with uncapped top 1" below lawn grade N50°E 89.50'.
 - ② New witness SW corner of block residence foundation N88°E 35.93'.
 - ③ Old BT 18" Pr with plain blaze scar on face at root crown S35°W 19.35'.
 - ④ Old 3/4" dia. iron pipe found bent S69°W 54.85', which I reset with old 1" dia. by 18" iron pipe I had pulled at this 40 Corner location.
 - ⑤ Old BT 32" Pw with face blazes shut and faint N40°W 17.83'.

Unless otherwise indicated, all bearing tree ties are to a .25" dia. by 2.5" long PK nail with a 1.25" dia. steel washer driven into unblazed right face and a .25" dia. by 2.5" long PK nail with a 2" dia. steel washer stamped BT is also driven into unblazed face of bearing tree at DBH; the basis for measured bearings is by compass to nearest degree and all the distances are measured horizontal by steel tape corrected to nearest 1/100th feet at standard temperature of 68° F.



LAND SURVEYOR CERTIFICATE:
 I, William C. Rohde, hereby certify that I am duly licensed as a Professional Land Surveyor in the State of Wisconsin; that this USPLS monument location was determined by me and/or under my direct supervision and control; and that this U.S. Public Land Survey Monument Location Record is true and correct to the best of my knowledge and belief.

Signed: *William C. Rohde*
 William C. Rohde
 RLS 841

T 36N
R 8E
17

SECTION LOCATION MAP
 INDEX NO. J 8

3608080010

Date Signed: August 24, 2000

SHEET 1 OF 1
 FORM REVISED: 06/01/99