

U.S. PUBLIC LAND SURVEY MONUMENT RECORD

Note: This form is intended and designed to fulfill all requirements of Wisconsin Administrative Code, Chapter A-E 7.08 U.S. Public Land Survey Monument Record (3) (a) (b) (c) (d) (e) (f) (g) (h) (i). An additional sheet may be added if necessary to conform with said requirements.

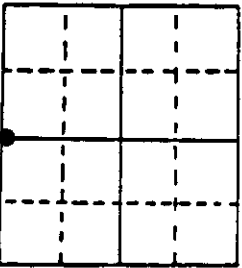
(a) Corner location: Township 36 North

Range 8 East

Town/City/Village Crescent

County Oneida

Section 9



(b) (f) (g) (h) Description of monument found at this corner and if it was accepted, state all evidence (material, testimonial, occupational, plats, records, other monuments) used as a basis for accepting. If not accepted or if nothing was found, state evidence used as basis for establishing location. If reestablished through lost corner proportionate methods, indicate all monuments, distances and directions used to establish. Indicate type of monument found or set and sign post.

1863-Daugherty set post, 10" white pine S 39 E 50 links, 10" pine N 32 W 16 links

1897-Door at post

1939-G.L.O. found an oak post 4" square firmly set with 30" of it

above ground. Set an iron post 36" long, 1" in diameter,

28" in the ground for the & section corner with brass cap found

remains of original B.T.s: badly burned pine stump bears S 40

degrees E, 50 links, a dim stump hole bears N 32 degrees W,

16 links, made new B.T.s a maple 8" in diameter bears S 76 E,

176 links marked & S. 10 B.T. a norway pine 10" diameter bears

N 78 degrees W, 256 links, marked & S. 9 B.T.

1968-George Drivas found G.L.O. pipe

1971-N. Loftus found G.L.O. monument

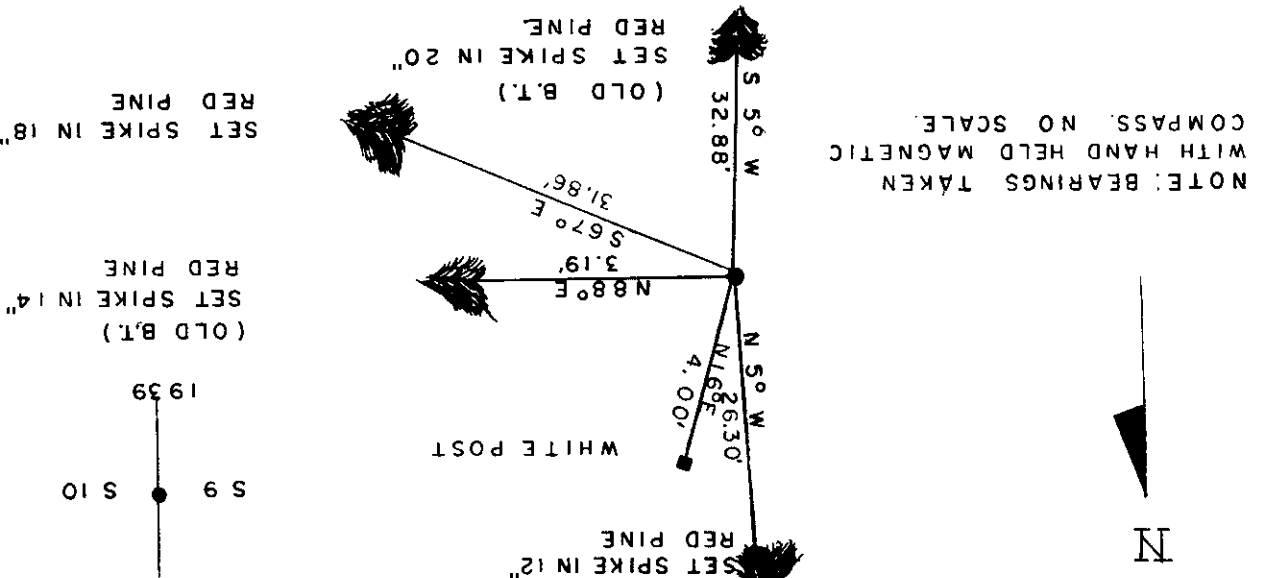
1976-Stuart Foltz found G.L.O. brass cap 10" norway pine N 84 degrees E

32.2', 10" norway pine S 7 degrees W 2.7'

1993-William Badow found G.L.O. monument stamped as shown below and witnessed.

(c) (d) (e) Plan view of corner with ties to at least 4 witness monuments. If in disagreement with previously established corner, show the distances between the two corners and also indicate the ties to the

disputed corner.



(f) I, William E. Badow
 complete to the best of my knowledge and belief.
 this U.S. Public Land Survey Monument Record is correct and
 was determined by me or under my direction and control and that
 (type or print name) certify that the corner location on this record

Signature _____
 Date 12-29-93



Index No. G-13

Stamp 3608092000