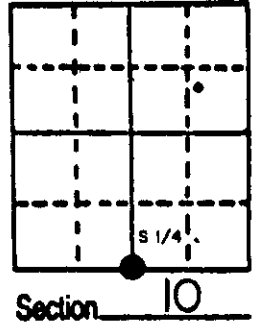
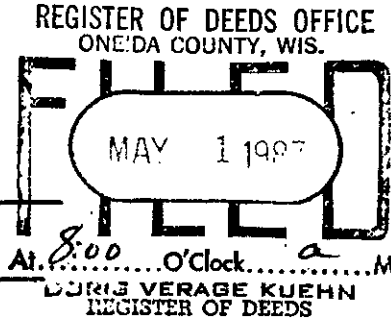


# U.S. PUBLIC LAND SURVEY MONUMENT RECORD

**Note:** This form is intended and designed to fulfill all requirements of Wisconsin Administrative Code, Chapter A-E 5.02, U.S. Public Land Survey Monument Record (3) (a) (b) (c) (d) (e) (f) (g) (h) (i). An additional sheet may be added if necessary to conform with said requirements.

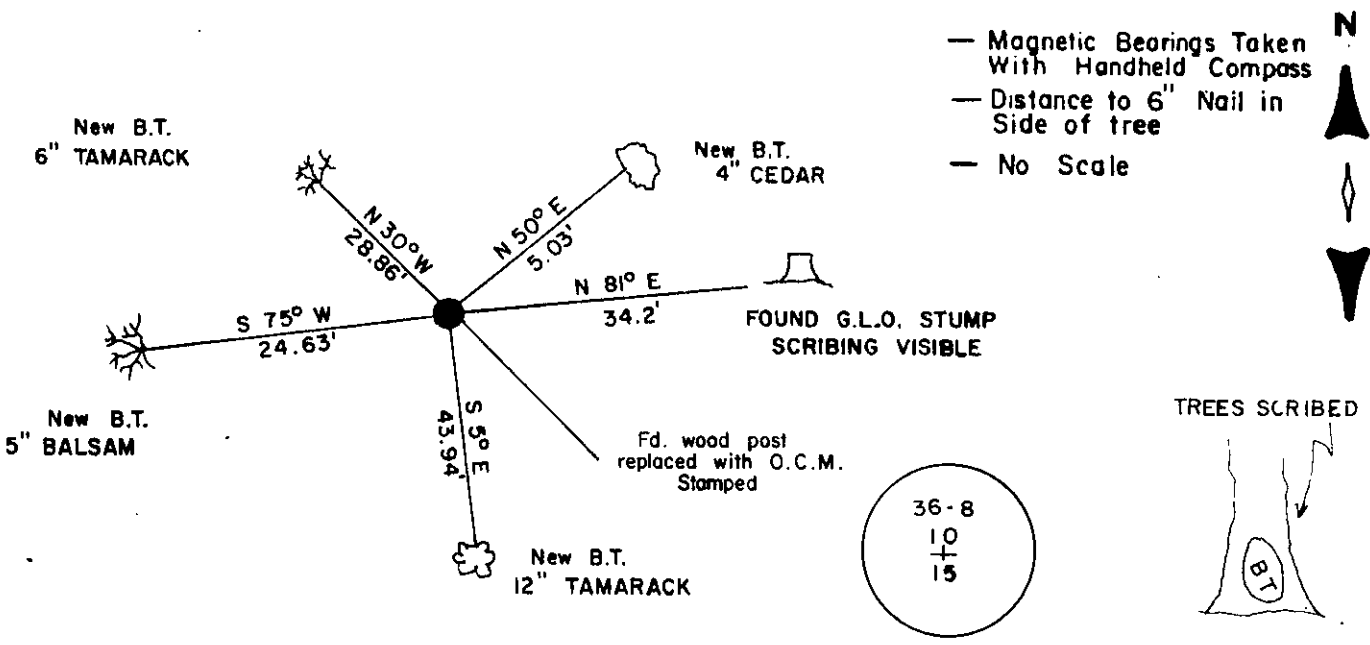
(a) Corner location: Township 36 North  
 Range 8 East West  
 Town/City/Village of CRESCENT  
 County of ONEIDA



(b) (f) (g) (h) Description of monument found at this corner and if it was accepted, state all evidence (material, testimonial, occupational, plats, records, other monuments) used as a basis for accepting. If not accepted or if nothing was found, state evidence used as basis for establishing location. If reestablished through lost corner proportionate methods, indicate all monuments, distances and directions used to establish.

-1863 W.E. Daugherty established original corner bet. 10&15...west corrected  
 20.50 stream, 39.91 1/4 post B.T.s Tam.10 S32E 60, Tam 8 S10E 21...  
 -1898 B.F. Dorr at cor bet. 10&15 dist E 42.18, dist S 79.30  
 1939 Hal D. Craig surveyor with the General Land Office executed a dependent resurvey and states that @ S 87° 04' E 41.61ch. from the corner of 9-10-15-16 he found the remains of the original B.T.s for the 1/4 corner bet. 10 & 15, set a cedar post in very wet swamp B.T.s O.B.T. dead Tam N18E 21, OBT Tam S31E 60, scribe marks on both O.B.T.; local B.T.s Spruce 8 N44E 29, Spruce 8 S49W 24; new B.T.s Tam 10 N81 1/4 E 52, Cedar S79W 48  
 -G Drivas with RIPCO in 1968 found a old scribed post at corner and stump N76E .54ch (1/4 cor, by Genisot bears N20W 2.73ch) measures dist. W 41.629, Dist E 42.385  
 -1987 I found the point of the wood post and the G.L.O. Tam which is a stump with scribing plain and the Cedar which is down and badly decayed. I replaced the post with a 2"x6' Oneida County Aluminum Capped monument and witnessed it as shown.

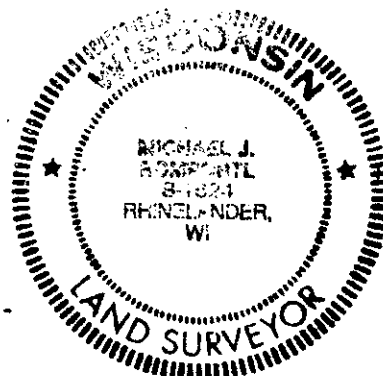
(c) (d) (e) Plan view of corner with ties to at least 4 witness monuments. If in disagreement with previously established corner, show the distances between the two corners and also indicate the ties to the disputed corner.



(i) MICHAEL J. ROMPORTL R.L.S. 1624  
 (type or print name) certify that the corner location on this record was determined by me or under my direction and control and that this U.S. Public Land Survey Monument Record is correct and complete to the best of my knowledge and belief.

Michael J. Romportl 4-30-87  
 Signature Date

GENISOT & ASSOCIATES INC.  
 1512 EAGLE ST., RHINELANDER, WIS.



Index No. 115

3608100020

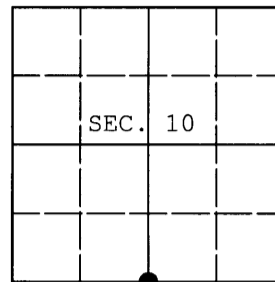
JAN 12 2016

AT            O'CLOCK            M  
KYLE J. FRANSON  
REGISTER OF DEEDS

**U.S. PUBLIC LAND SURVEY MONUMENT RECORD**

Note: This form is intended and designed to fulfill all requirements of Wisconsin Administrative Code, Chapter A-E 7.08 U.S. Public Land Survey Monument Record (3) (a) (b) (c) (d) (e) (f) (g) (h) (i). An additional sheet may be added if necessary to conform with said requirements.

(a) CORNER LOCATION: WISCRS - Oneida County  
1/4 Cor. of Secs. 10 & 15 N: 155,731.56 USft  
Township 36 North E: 246,490.80 USft  
Range 8 East of the 4th P.M. Datum: NAD 1983(2011)  
Town of Crescent County of Oneida



(b) HISTORY OF ORIGINAL CORNER ESTABLISHMENT

Original Surveyor: Original Accessories:  
Date of Survey: Commenced:  
Completed:

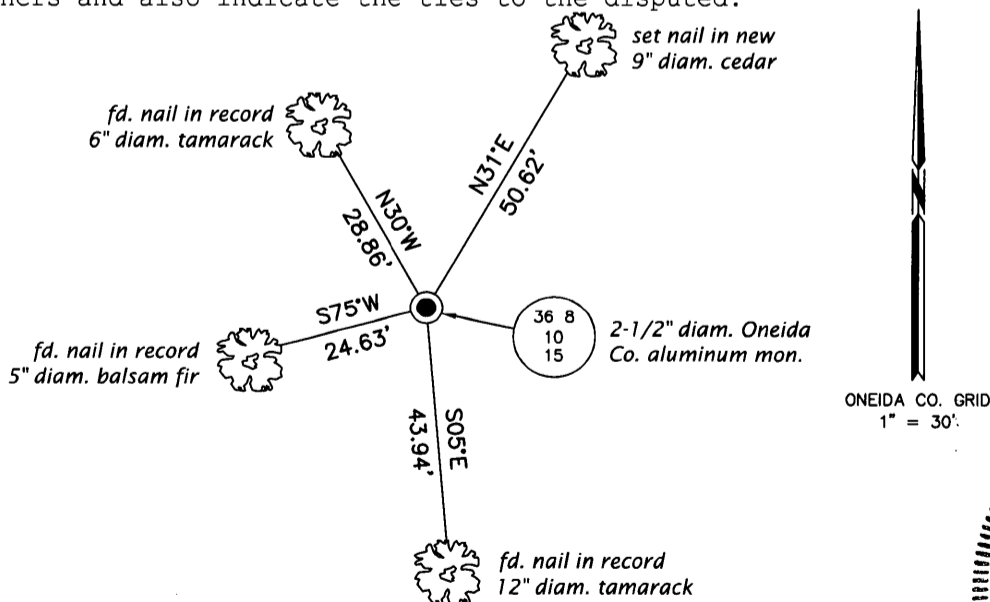
(b) (f) (g) (h) Description of monument found at this corner and if it was accepted, state all evidence (material, testimonial, occupational, plats, records, other monuments) used as a basis for accepting. If not accepted or if nothing was found, state evidence used as basis for establishing location. If re-established through lost corner proportionate methods, indicate all monuments, distances and directions used to establish. Indicate type of monument and sign post found or set.

*This is a perpetuation of a previous USPLS Monument Record by Michael J. Romportl, RLS dated April 30, 1987 and filed in the office of the Oneida County Register of Deeds. A complete history of the corner can be found on the previous monument record. I accept the previous location as a true and faithful perpetuation or reestablishment of the original corner location and further perpetuate it as follows.*

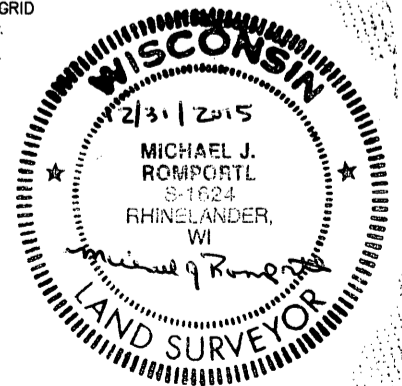
October 22, 2015: I found and accepted the monument I set in 1987, a 2-1/2" diam. aluminum pipe with a 3-1/4" diam. Oneida Co. aluminum cap projecting 24" above the bog surface. I found or established accessories as shown below and found a white plastic sign post adjacent to the monument. The record cedar bearing tree at N50°E has been recently cut.

The coordinates shown were derived from two independent RTK observations of the corner point and are referenced to the WISCORS GNSS Network.

(c) (d) (e) Plan view of corner with ties to at least 4 witness monuments. If in disagreement with previously established corner, show the distances between the two corners and also indicate the ties to the disputed.



(i) I, Michael J. Romportl, Professional Land Surveyor No. S-1624, hereby certify that the corner location on this record was determined by me or under my direction and control and that this U.S. Public Land Survey Monument Record is correct and complete to the best of my knowledge and belief.



Michael J. Romportl  
Signature

12/31/2015  
Date